

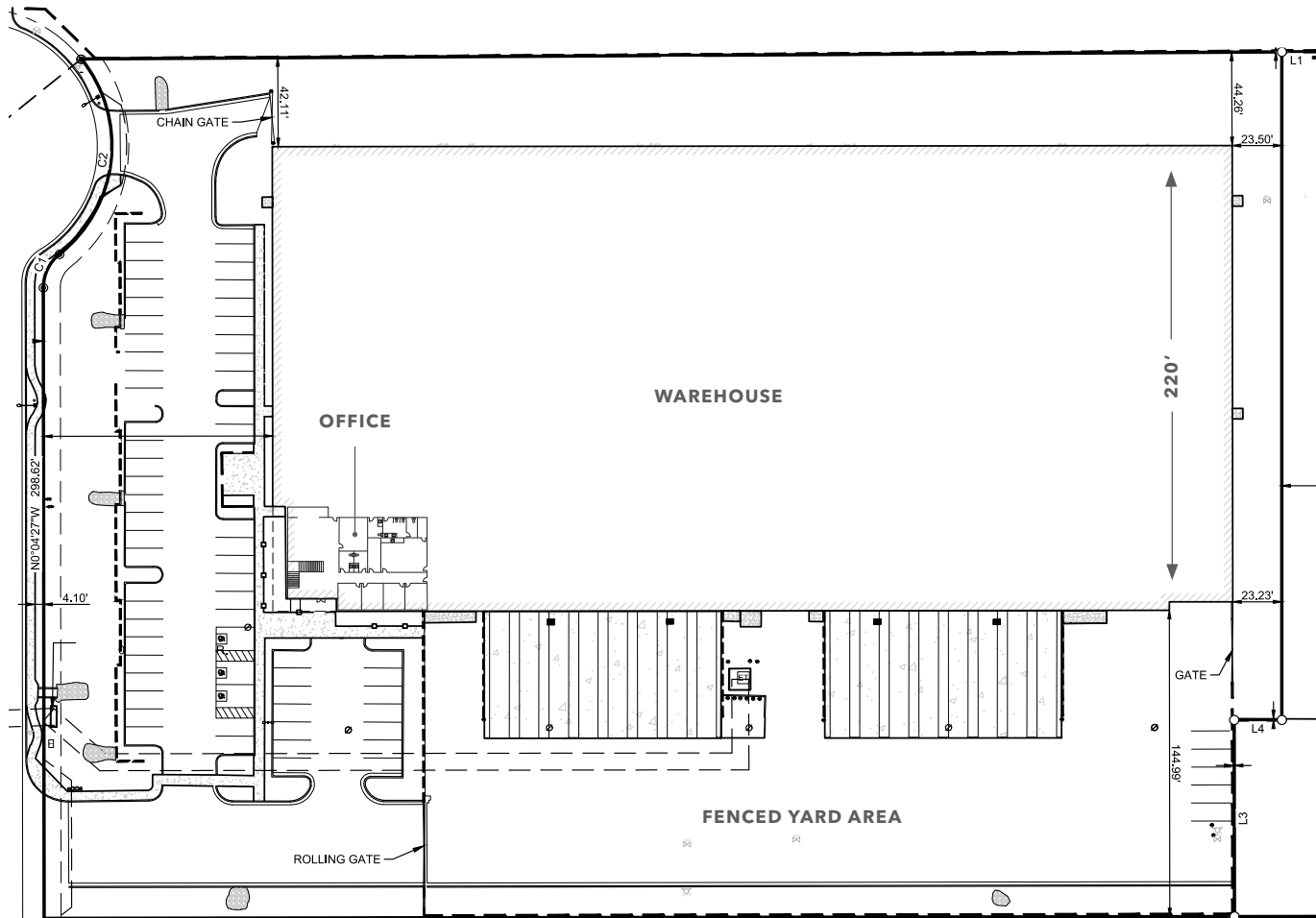
FOR LEASE

705 SOUTH 94TH AVENUE

*±100,000 SF Freestanding
Distribution Building with
Gated Yard in Tolleson, AZ*



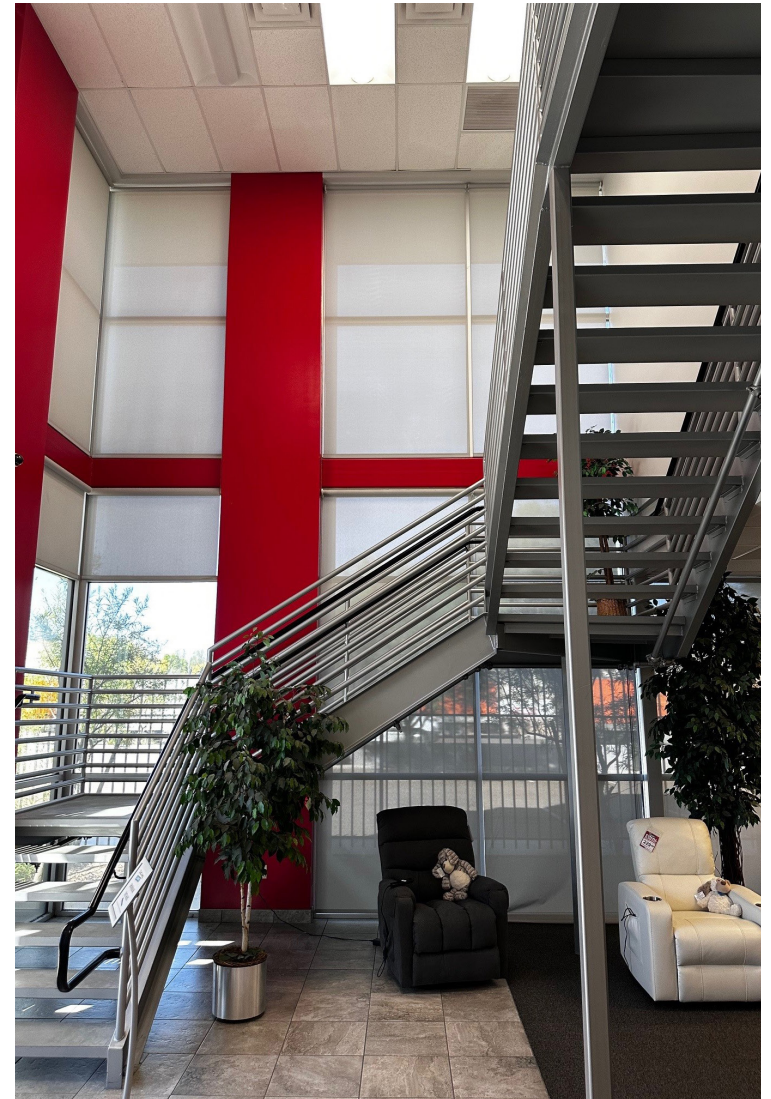
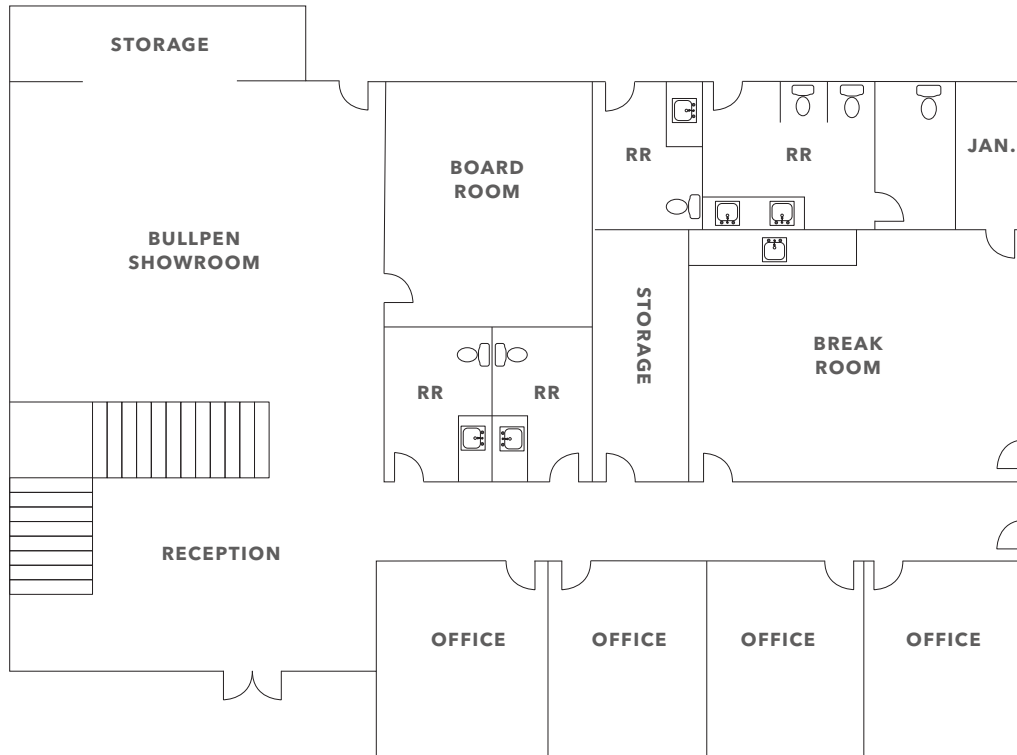
SITE PLAN



220'
DEPTH

50' X 52'
COLUMN SPACING

OFFICE FLOOR PLAN



±100,000 SF FREE STANDING BUILDING

±3,496 SF of office

Bonus mezzanine not included in SF

±5.38 acre parcel

16 dock-hi doors, with in-floor pit levelers

2 - 12'x14' grade-level roll up doors

30' clear height

277/480V power

Evaporative cooled

ESFR sprinklered

Zoned I-2, City of Tolleson

Available 11/1/26

Contact broker for lease rate





For more information, contact

MIKE CIOSEK, SIOR
602.513.5135
mike.ciosek@kidder.com

ERIC BELL, SIOR
602.513.5151
eric.bell@kidder.com

CHASE GIANNI
602.513.5138
chase.gianni@kidder.com

CORY DELONG, SIOR
602.513.5181
cory.delong@kidder.com

KIDDER.COM

This information supplied herein is from sources we deem reliable. It is provided without any representation, warranty, or guarantee, expressed or implied as to its accuracy. Prospective Buyer or Tenant should conduct an independent investigation and verification of all matters deemed to be material, including, but not limited to, statements of income and expenses. Consult your attorney, accountant, or other professional advisor. All Kidder Mathews designs are the sole property of Kidder Mathews. Branded materials and layouts are not authorized for use by any other firm or person.

