

FOR LEASE

# 3029 E SOUTH ST

LONG BEACH, CA 90805

*2,662 SF of Newly Renovated  
Office Space Ready for  
Immediate Occupancy*



KIDDER.COM

**km** Kidder  
Mathews

**PROPERTY HIGHLIGHTS**

2,662 SF of newly renovated office space

Ready for occupancy now

New carpet, paint, flooring, ceiling tiles

Ample natural light

4 private offices

2 conference rooms

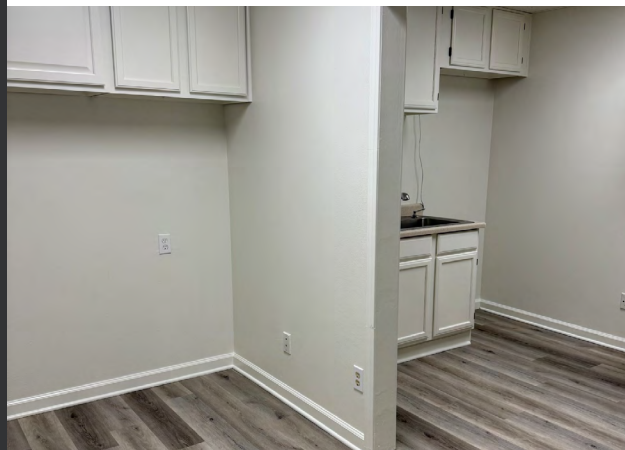
2 restrooms

Break room/lunch area

Reception

Lease term flexible

Priced to Lease \$1.05 PSF Gross, or \$3,327/month



**2,662 SF**

AVAILABLE SPACE

**\$1.05**

PSF GROSS

**KIDDER.COM**

This information supplied herein is from sources we deem reliable. It is provided without any representation, warranty, or guarantee, expressed or implied as to its accuracy. Prospective Buyer or Tenant should conduct an independent investigation and verification of all matters deemed to be material, including, but not limited to, statements of income and expenses. Consult your attorney, accountant, or other professional advisor. All Kidder Mathews designs are the sole property of Kidder Mathews. Branded materials and layouts are not authorized for use by any other firm or person.





*Exclusively listed by*

**BRAD CONNORS**

First Vice President

310.906.3266

brad.connors@kidder.com

LIC N° 01931267

**KIDDER.COM**

This information supplied herein is from sources we deem reliable. It is provided without any representation, warranty, or guarantee, expressed or implied as to its accuracy. Prospective Buyer or Tenant should conduct an independent investigation and verification of all matters deemed to be material, including, but not limited to, statements of income and expenses. Consult your attorney, accountant, or other professional advisor. All Kidder Mathews designs are the sole property of Kidder Mathews. Branded materials and layouts are not authorized for use by any other firm or person.

