

50 E. Chicago

A: 2,040 SF

B: 1,462 SF

C: 1,472 SF

THREE RESTAURANT OR RETAIL OPPORTUNITIES
STREETERVILLE, CHICAGO, IL



[savills.us](https://www.savills.us)

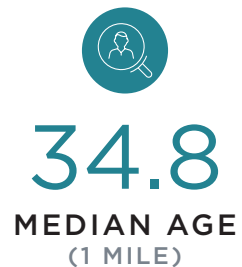
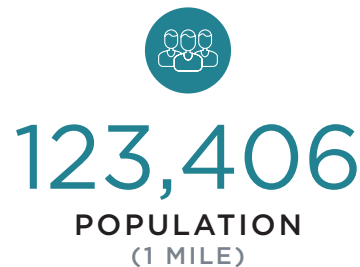


THE OPPORTUNITY

50 East Chicago provides unique retail or restaurant opportunities at the junction of River North, the Gold Coast, and North Michigan Avenue. This prime, seven-day-a-week location offers significant foot traffic from a wide array of workers, shoppers, residents, and tourists alike. In addition, the spaces are in close proximity to Northwestern Hospital and Loyola University, as well as the CTA Red Line.

TWO OF THE THREE SPACES HAVE RESTAURANT OPPORTUNITIES

2024 DEMOGRAPHICS



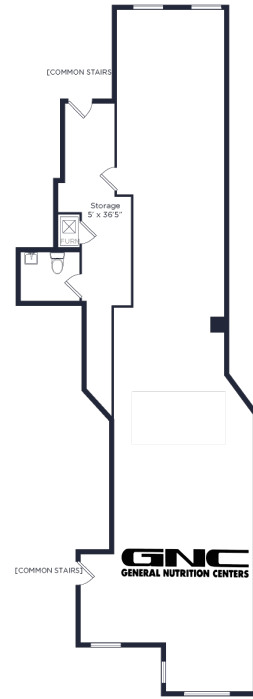
NOTABLE AREA CO-TENANTS

- FLACO'S TACOS
- GNC
- THE UPS STORE
- STREETER'S TAVERN
- PIPPIN'S TAVERN
- CHICK-FIL-A
- THE PARK HYATT
- NORDSTROM RACK
- CANADA GOOSE
- ANTHROPOLOGIE
- POTBELLY'S
- 7-ELEVEN
- GIORDANO'S
- JAKE MELNICK'S
- EPIC BURGER
- CHIPOTLE
- LOYOLA UNIVERSITY
- CHICAGO
- ROSEBUD ON RUSH
- FRIENDS SUSHI
- MCDONALD'S
- BISTRONOMIC
- TRULUCK'S

FLOORPLANS

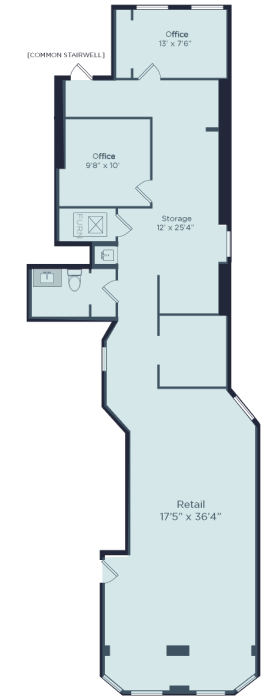
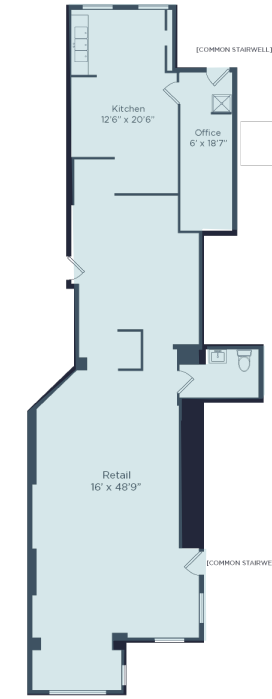
GROUND FLOOR

A 2,040 SF



B 1,462 SF
Existing Black-Iron

C 1,472 SF

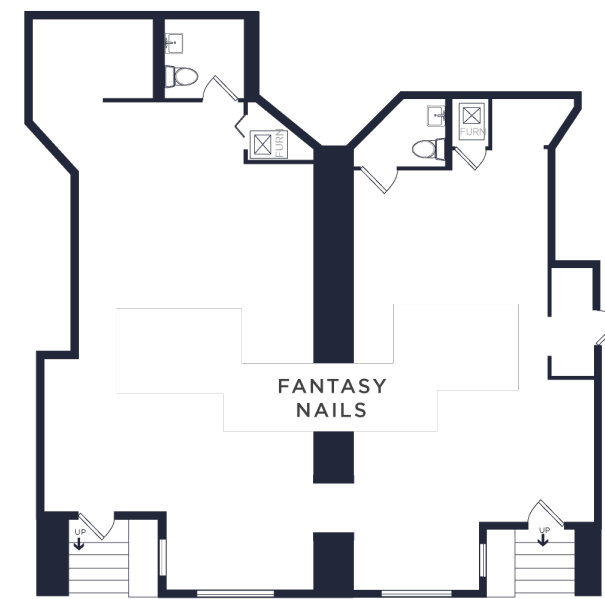
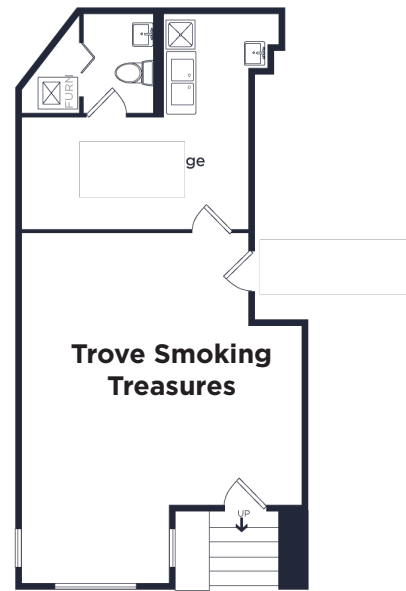
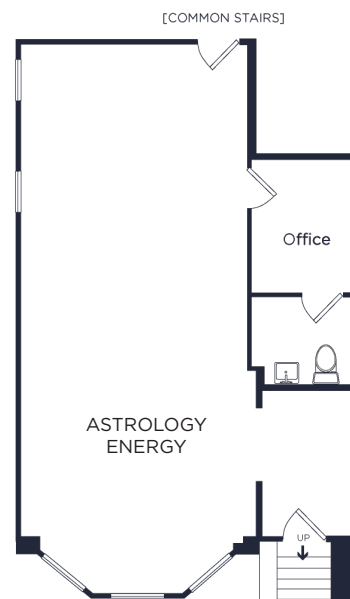


CHICAGO AVE



CHICAGO AVE

LOWER LEVEL



KIMBERLY WISKUP

+1 312 595 2917
kwiskup@savills.us

PHIL GOLDING

+1 312 404 6673
pgolding@savills.us



savills.us