

# RIVER GREEN VILLAGE

## OFFICE - C

170 RIVER GREEN AVE.  
CANTON, GA 30114

### PROJECT DATA

**SCOPE:**  
NEW 1-STORY OFFICE SPACE, WHITE-BOX ONLY

#### APPLICABLE CODES:

**BUILDING :** 2018 EDITION OF THE INTERNATIONAL BUILDING CODE WITH GEORGIA STATE AMENDMENTS (2020), (2022) (2024)  
**FIRE PREVENTION:** 2018 EDITION OF THE INTERNATIONAL FIRE CODE WITH GEORGIA STATE AMENDMENTS (NFPA 101 LIFE SAFETY CODE)  
**MECHANICAL:** 2018 EDITION OF THE INTERNATIONAL MECHANICAL CODE WITH GEORGIA STATE AMENDMENTS (2020), (2024)  
**GAS:** 2018 EDITION OF THE INTERNATIONAL FUEL GAS CODE WITH GEORGIA STATE AMENDMENTS (2020), (2022)  
**PLUMBING:** 2018 EDITION OF THE INTERNATIONAL PLUMBING CODE WITH GEORGIA STATE AMENDMENTS (2020), (2022), (2023), (2024)  
**ELECTRICAL:** 2023 EDITION OF THE NATIONAL ELECTRICAL CODE  
**ENERGY:** 2015 EDITION OF THE INTERNATIONAL ENERGY CONSERVATION CODE WITH GEORGIA STATE AMENDMENTS (2020), (2022), (2023)  
**HANDICAP ACCESSIBILITY:** 2010 ADA STANDARDS FOR ACCESSIBILITY DESIGN WITH JUNE 11, 2012 AMENDMENTS  
 - OCGA TITLES 25 AND 30 GEORGIA ACCESSIBILITY CODE / 2010 ADA STANDARDS

#### BUILDING INFORMATION:

**OCCUPANCY:** GROUP - B (BUSINESS)  
**TYPE OF CONSTRUCTION:** NON FIRE SPRINKLERED  
**TOTAL AREA:** 3,489sf  
**ALLOWABLE HEIGHT:** 40'-0"  
**MAX. # OF STORIES:** 2  
**ALLOWABLE AREA (PER STORY):** 9,000sf

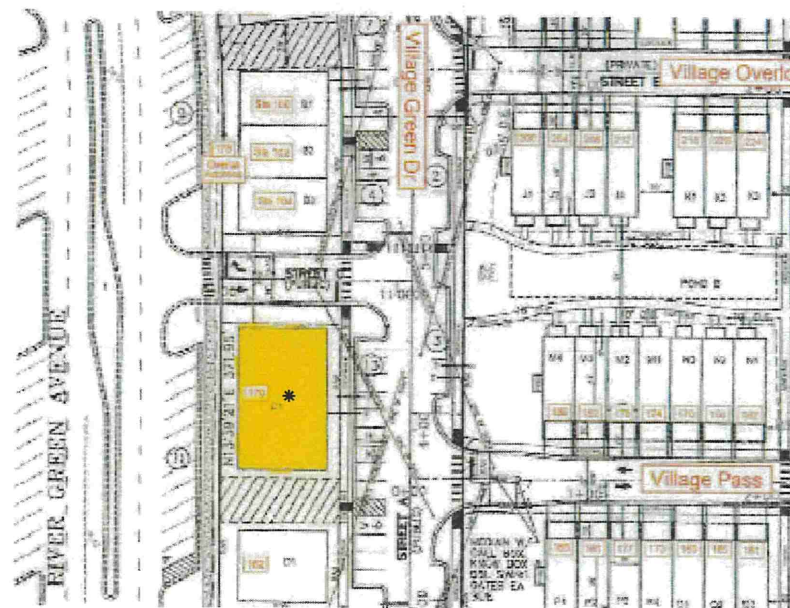
### PROJECT DIRECTORY

**ARCHITECT:**  
 GA. LICENSE #: 7083  
 NEIL B. BOHANNON  
 122 BRIGHTON BLVD.  
 WOODSTOCK, GA 30188  
 PH: 404.406.3491

**OWNER/CONTRACTOR:**  
 CHATTAHOOCHEE ENTERPRISES, INC.  
 2355 LOG CABIN DRIVE  
 ATLANTA, GA 30339  
 RICK DULANEY, PROJECT MANAGER  
 PH: 770.318.5551

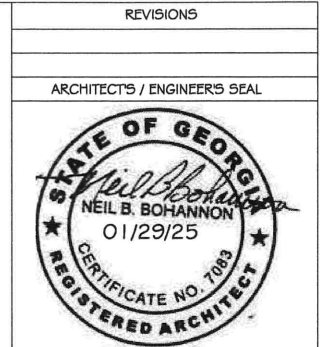
**MEP ENGINEER:**  
 GA. LICENSE #: NC223051  
 PHILLIPS GRADICK ENGINEERING, P.C.  
 1435 W. MOREHEAD STREET, STE: 200  
 CHARLOTTE, NC 28208  
 PH: 704.900.5838

### LOCATION MAP



### SHEET INDEX

- C1.0-SITE PLAN (SUBMITTED SEPARATELY)
- A0.0-COVER SHEET
- A1.1-FRONT & REAR ELEVATIONS
- A1.2-SIDE ELEVATIONS
- A2.0-FOUNDATION PLAN
- A2.1-FLOOR PLAN
- A2.2-ADA TOILET DETAILS
- A3.0-ROOF PLAN
- E0.1a-ELECTRICAL GENERAL NOTES
- E0.1b-ELECTRICAL GENERAL NOTES
- E.02-ELECTRICAL SPECIFICATIONS
- E0.3-ELECTRICAL LIGHTING SCHEDULE
- E1.0-LIGHTING & POWER PLAN
- E2.0-RISER / GROUNDING PLAN
- E3.1-PANEL SCHEDULES
- E3.2-PANEL SCHEDULES
- E3.3-PANEL SCHEDULES
- E3.4-PANEL SCHEDULES
- M0.0-HVAC GENERAL NOTES
- M0.1-HVAC SCHEDULES
- M.02-HVAC DETAILS
- M1.0-HVAC FLOOR PLAN
- M1.1-HVAC ELEVATION
- P0.1-PLUMBING GENERAL NOTES / SCHEDULES
- P0.2-PLUMBING DETAILS
- P1.1-PLUMBING WATER PLAN
- P1.2-PLUMBING WASTE & VENT PLAN
- S-0.0-GENERAL NOTES
- S-1.0-FOUNDATION PLAN
- S-1.1-ROOF FRAMING PLAN
- S-1.2-SHEAR WALL PLAN
- S-2.0-SECTION
- S-2.1-SECTION
- S-2.2-SECTION
- S-3.0-DETAILS
- S-3.1-DETAILS



REVISIONS			
ARCHITECT'S / ENGINEER'S SEAL			
RGV:	OFFICE BLDG. C	BCLLC	BB
DATE:	01/29/25		
DRAWN BY:			
CHECKED BY:			

Scale: 1/8" = 1'-0"

**RIVER GREEN VILLAGE - BUILDING - C COVER SHEET**

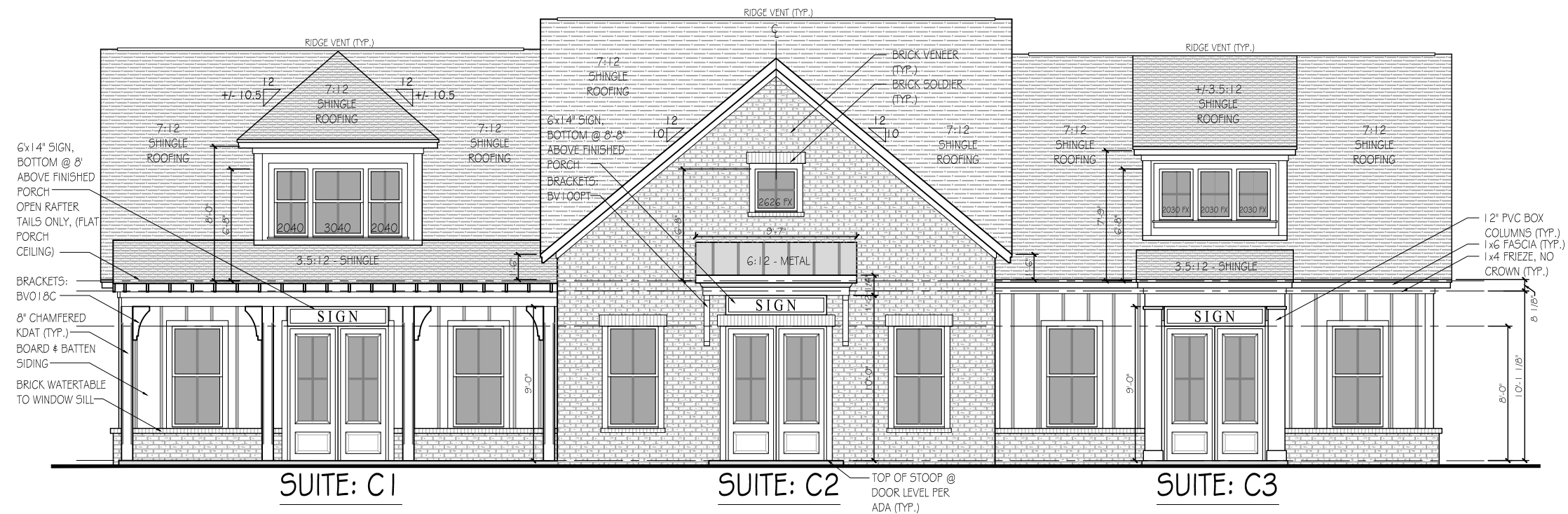
Copyright 2024 JWC Collection. All rights reserved. No portion of this document may be utilized, in whole or part, without the prior written permission of JWC Collection. A \$1,000.00 reward is available to the first provider of information leading to the successful prosecution of a claim made by JWC Collection for copyright infringement.

2355 LOG CABIN DRIVE,  
ATLANTA, GA 30339  
770.809.6010



AO.0

"RELEASED FOR CONSTRUCTION"



**FRONT ELEVATION**

1/8" = 1'-0"



**REAR ELEVATION**

1/8" = 1'-0"

REVISIONS

---

ARCHITECT'S / ENGINEER'S SEAL

RGV:	OFFICE BLDG. C
DATE:	01/29/25
DRAWN BY:	BCLLC
CHECKED BY:	BB

Scale: 1/8" = 1'-0"

**RIVER GREEN VILLAGE -  
BUILDING - C  
FRONT & REAR ELEVATIONS**

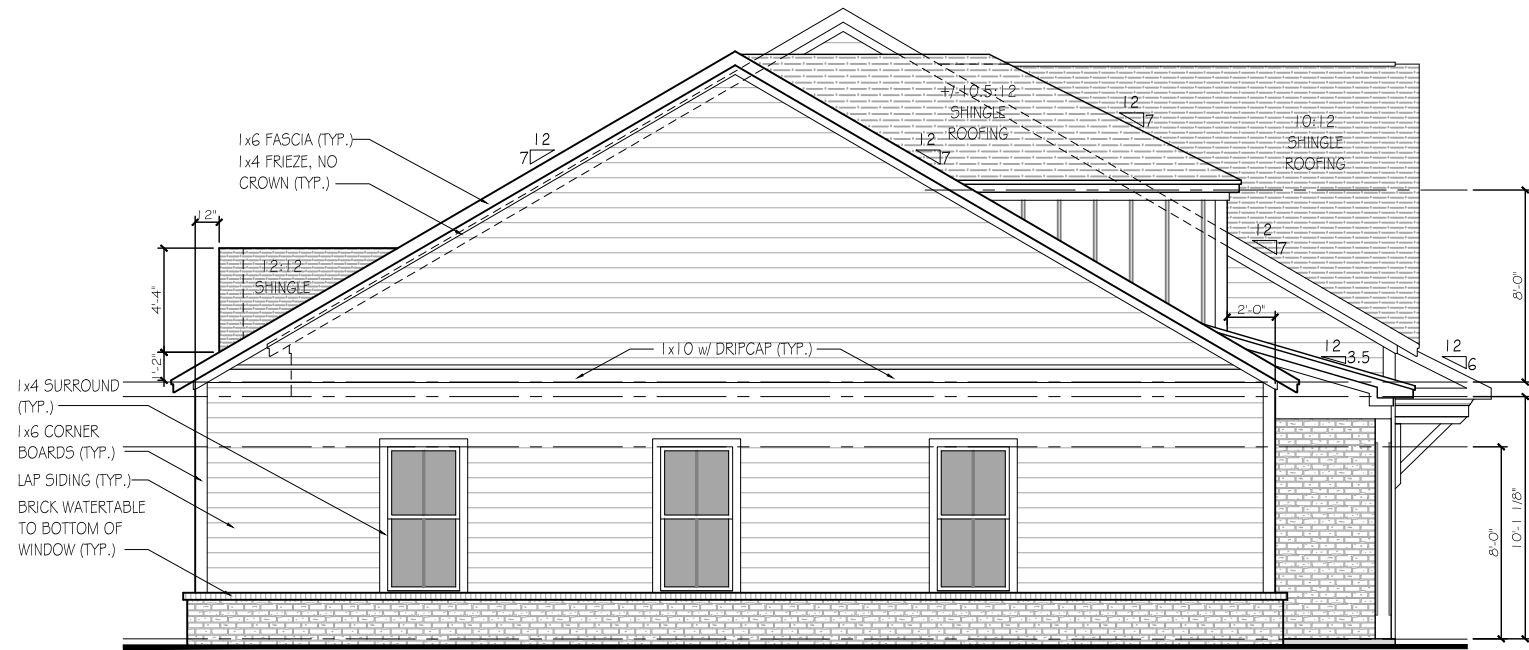
Copyright 2024 JW Collection. All rights reserved. No portion of this document may be utilized, in whole or part, without the prior written permission of JW Collection. A \$1,000.00 reward is available to the first provider of information leading to the successful prosecution of a claim made by JW Collection for copyright infringement.

2355 LOG CABIN DRIVE,  
ATLANTA, GA 30339  
770.809.6010



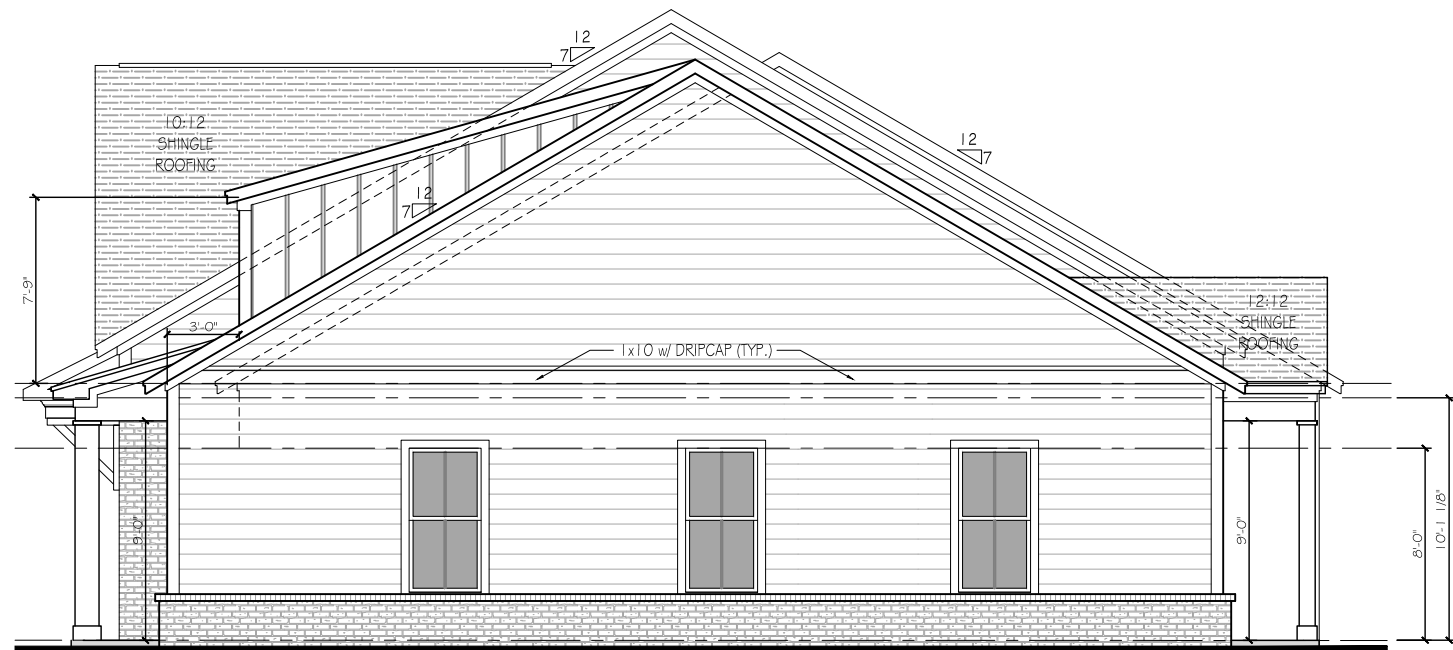
A1.1

**"RELEASED FOR CONSTRUCTION"**



**LEFT ELEVATION**

1/8" = 1'-0"



**RIGHT ELEVATION**

1/8" = 1'-0"

**"RELEASED FOR CONSTRUCTION"**

REVISIONS

---

ARCHITECT'S / ENGINEER'S SEAL

RGV:	OFFICE BLDG. C
DATE:	01/29/25
DRAWN BY:	BCLLC
CHECKED BY:	BB

Scale: 1/8" = 1'-0"

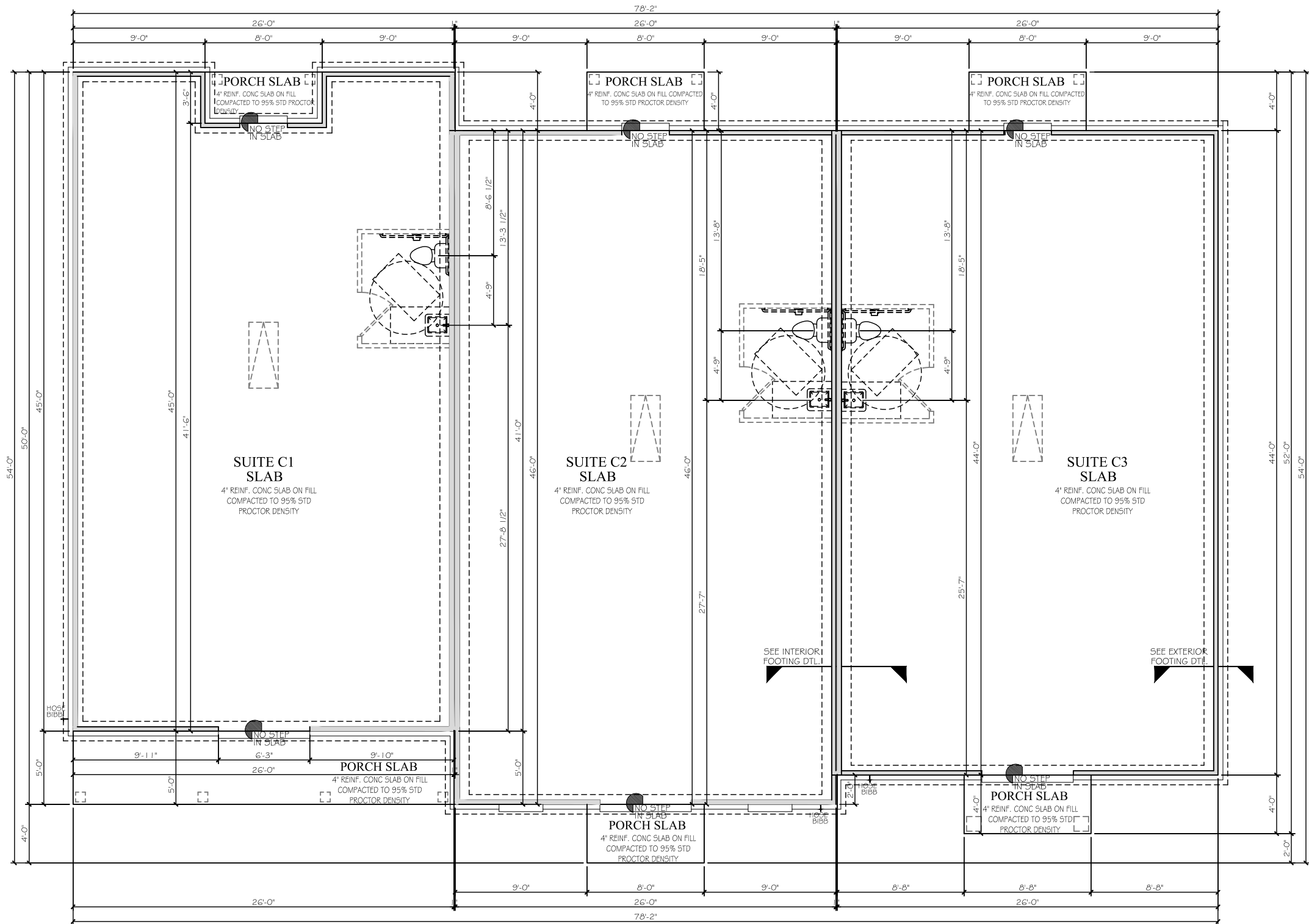
**RIVER GREEN VILLAGE -  
BUILDING - C  
SIDE ELEVATIONS**

Copyright 2024 JW Collection. All rights reserved. No portion of this document may be utilized, in whole or part, without the prior written permission of JW Collection. A \$1,000.00 reward is available to the first provider of information leading to the successful prosecution of a claim made by JW Collection for copyright infringement.

2355 LOG CABIN DRIVE,  
ATLANTA, GA 30339  
770.809.6010



**A1.2**



NOTE: SEE S3.0 FOR FOOTING DETAILS

NOTE: SEE S3.1 FOR REQUIRED PORTAL FRAME DETAIL PRIOR TO FOUNDATION WORK

FOUNDATION PLAN  
1/8" = 1'-0"

"RELEASED FOR CONSTRUCTION"

REVISIONS

---

ARCHITECT'S / ENGINEER'S SEAL

RGV:	OFFICE BLDG. C
DATE:	01/29/25
DRAWN BY:	BCLLC
CHECKED BY:	BB

Scale: 1/8" = 1'-0"

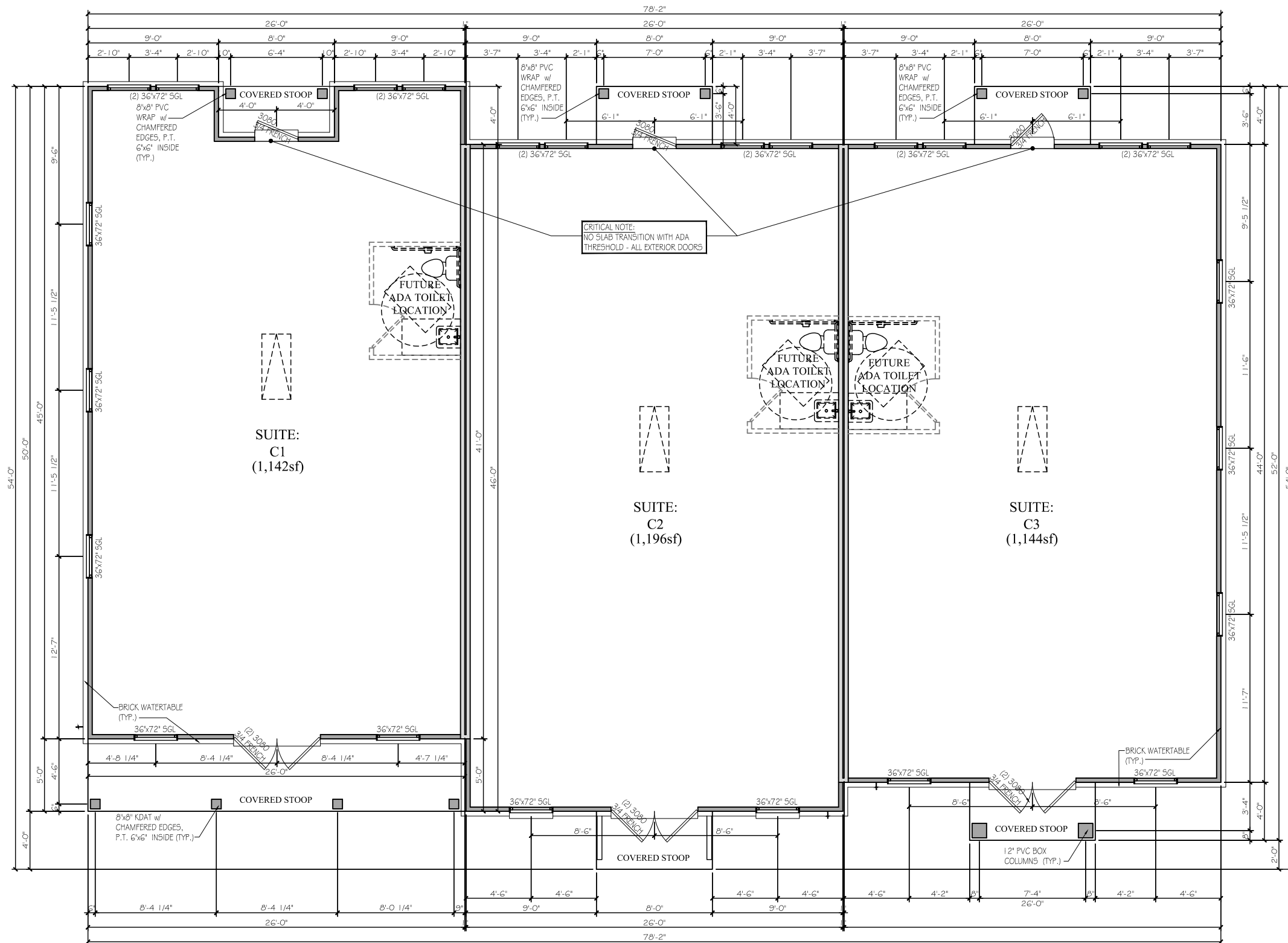
**RIVER GREEN VILLAGE -  
BUILDING - C  
FOUNDATION PLAN**

Copyright 2024 JW Collection. All rights reserved. No portion of this document may be utilized, in whole or part, without the prior written permission of JW Collection. A \$1,000.00 reward is available to the first provider of information leading to the successful prosecution of a claim made by JW Collection for copyright infringement.

2355 LOG CABIN DRIVE,  
ATLANTA, GA 30339  
770.809.6010



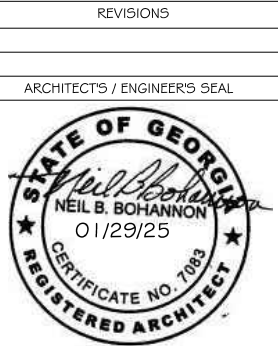
A2.0



NOTE: ALL WALLS ARE 2"x4" @ 16" O.C.

FIRST FLOOR PLAN  
1/8" = 1'-0"

"RELEASED FOR CONSTRUCTION"



RGV:	OFFICE BLDG. C
DATE:	01/29/25
DRAWN BY:	BCLLC
CHECKED BY:	BB

Scale: 1/8" = 1'-0"

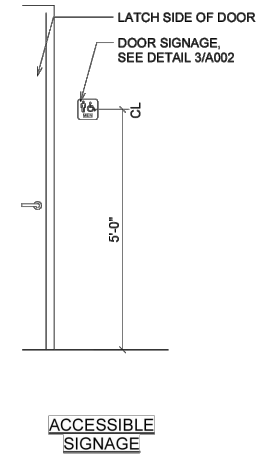
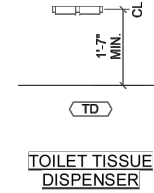
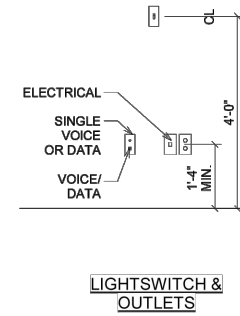
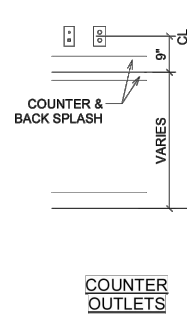
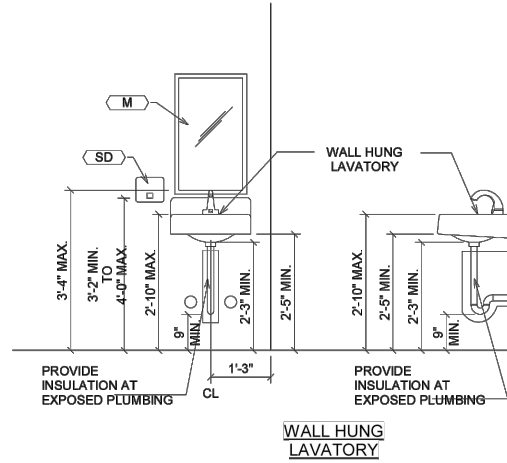
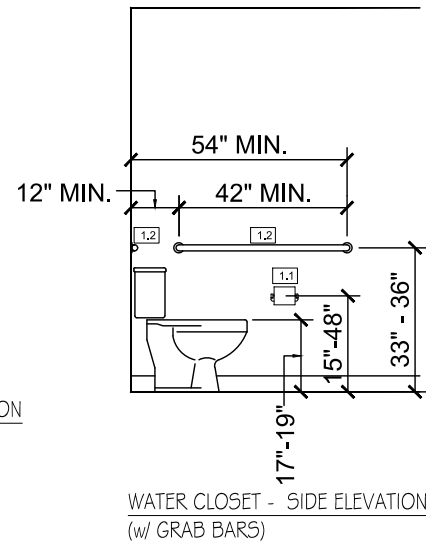
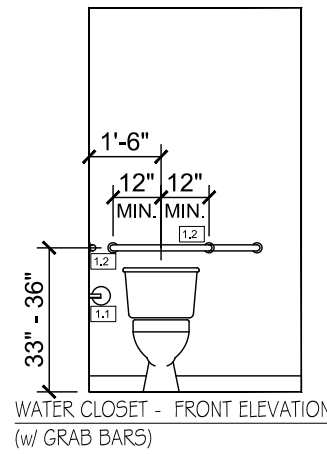
RIVER GREEN VILLAGE -  
BUILDING - C  
FIRST FLOOR PLAN

Copyright 2024 JW Collection. All rights reserved. No portion of this document may be utilized, in whole or part, without the prior written permission of JW Collection. A \$1,000.00 reward is available to the first provider of information leading to the successful prosecution of a claim made by JW Collection for copyright infringement.

2355 LOG CABIN DRIVE,  
ATLANTA, GA 30339  
770.809.6010



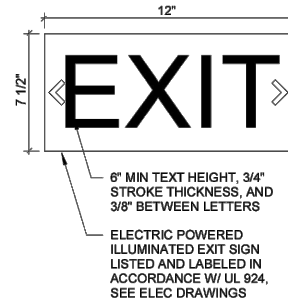
A2.1



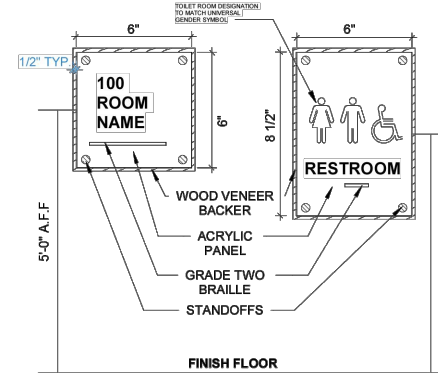
TOILET ACCESSORY SCHEDULE			
TYPE MARK	TYPE	MFR	MODEL
G1	36" GRAB BAR	BRADLEY CORPORATION	817 SERIES OR EQUAL
G2	42" GRAB BAR	BRADLEY CORPORATION	817 SERIES OR EQUAL
G4	18" GRAB BAR	BRADLEY CORPORATION	817 SERIES OR EQUAL
M	MIRROR	BRADLEY CORPORATION	781 SERIES OR EQUAL
PD	PAPER TOWEL DISPENSER	BOBRICK	B-72974
S	SANITARY NAPKIN DISPENSER	BRADLEY CORPORATION	4722-15
SD	SOAP DISPENSER	BRADLEY CORPORATION	6562
TD	TOILET PAPER DISPENSER	BRADLEY CORPORATION	5425

**TOILET ACCESSORY NOTES:**

1. ALL ACCESSORIES TO BE INSTALLED PER MANUFACTURER'S INSTALLATION INSTRUCTIONS AND ALL APPLICABLE CODES.
2. PROVIDE ADEQUATE BLOCKING AS REQUIRED FOR ALL TOILET ACCESSORIES PER MANUFACTURER'S INSTRUCTION.
3. ALL ACCESSORIES TO BE STAINLESS NO. 4 (SATIN) FINISH.
4. ALL ACCESSORIES TO BE PROVIDED AND INSTALLED BY GENERAL CONTRACTOR UNLESS OTHERWISE NOTED. (OPCI) = OWNER PROVIDED CONTRACTOR INSTALLED.



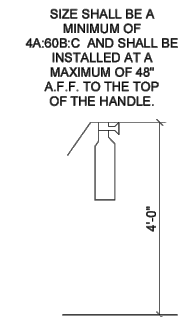
**CEILING MOUNTED SIGNAGE**



**SIGNAGE NOTES:**

1. SIGNAGE BY OWNER
2. DESIGN, STYLE, SIZE, COLOR INFORMATION SHALL BE SELECTED BY OWNER - ALL INFORMATION OF THIS TYPE CONTAINED HEREIN SHALL BE REFERENCE ONLY.
3. CENTER OF SIGN SHALL BE MOUNTED 5'-0" A.F.F. WITH EPOXY
4. ALL SIGNAGE SHALL COMPLY WITH ADA REQUIREMENTS.
5. VERIFY ROOM NAMES AND NUMBERS WITH OWNER PRIOR TO FABRICATION.
6. VERIFY SIGN LOCATIONS WITH OWNER PRIOR TO INSTALLATION.
7. TEXT (CAPITAL LETTERS) TO BE 1" HIGH.
8. THE BRAILLE SYSTEM IS A METHOD THAT IS WIDELY USED BY BLIND PEOPLE TO READ AND WRITE. GRADE TWO ENGLISH BRAILLE HAS 260 SYMBOLS FOR: LETTERS, PUNCTUATION MARKS, COMPOSITION SIGNS, NUMERALS, CONTRACTIONS, SINGLE-CELL WORDS AND SHORT-FORM WORDS.

**SIGNAGE N.I.C. (REFERENCE ONLY)  
DESIGN / STYLE / MODEL BY OWNER**



**FIRE EXTINGUISHER / CABINET**

REVISIONS

ARCHITECT'S / ENGINEER'S SEAL

RGV:	OFFICE BLDG. C
DATE:	01/29/25
DRAWN BY:	BCLLC
CHECKED BY:	BB

Scale: 1/8" = 1'-0"

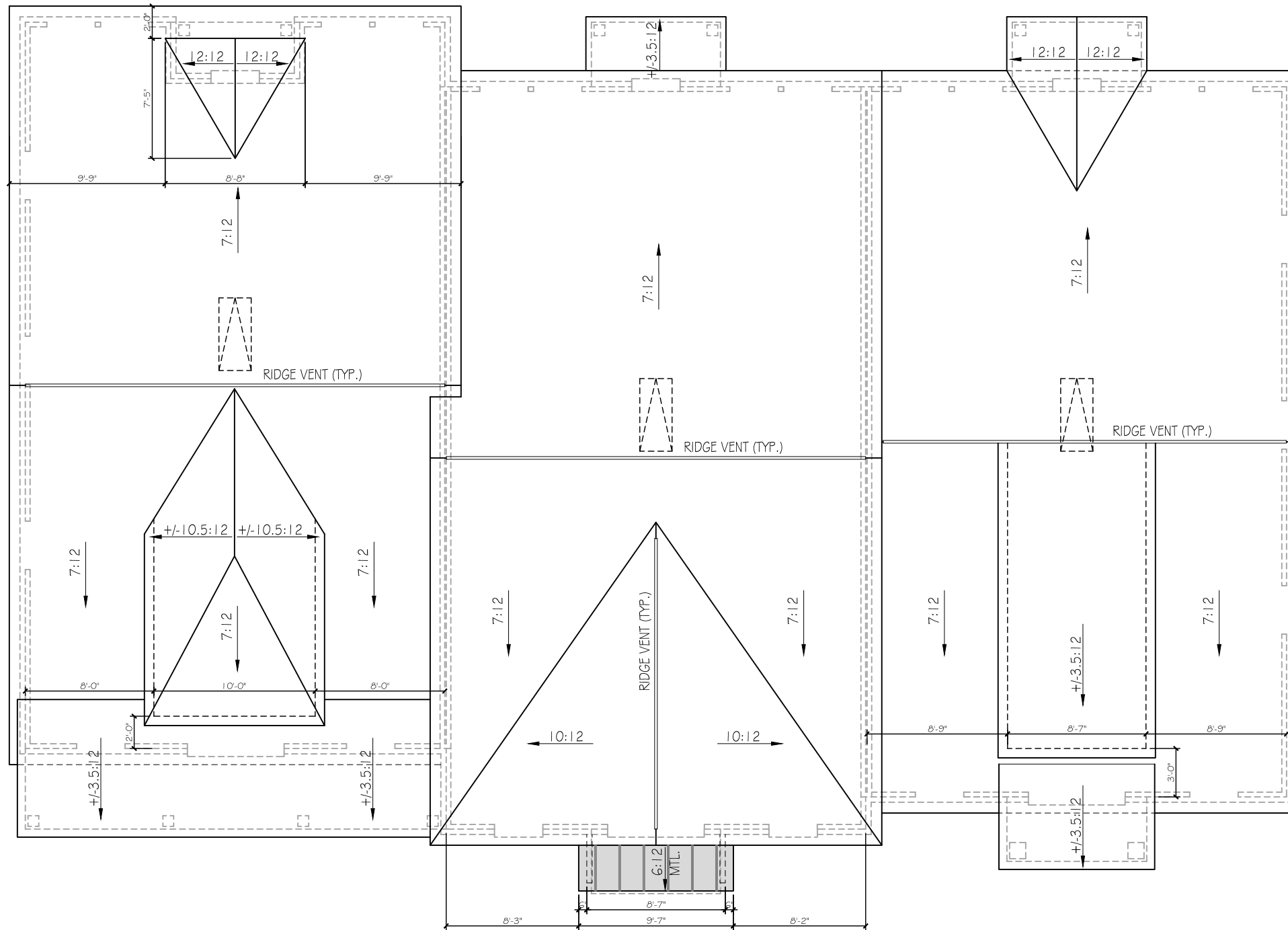
**RIVER GREEN VILLAGE -  
BUILDING - C  
ADA TOILET DETAILS**

Copyright 2024 JW Collection. All rights reserved. No portion of this document may be utilized, in whole or part, without the prior written permission of JW Collection. A \$1,000,000 reward is available to the first provider of information leading to the successful prosecution of a claim made by JW Collection for copyright infringement.

2355 LOG CABIN DRIVE,  
ATLANTA, GA 30339  
770.809.6010



A2.2



**ROOFPLAN**  
1/8" = 1'-0"

"RELEASED FOR CONSTRUCTION"

REVISIONS	
ARCHITECT'S / ENGINEER'S SEAL	
RGV:	OFFICE BLDG. C
DATE:	01/29/25
DRAWN BY:	BCLLC
CHECKED BY:	BB
Scale: 1/8" = 1'-0"	
<b>RIVER GREEN VILLAGE - BUILDING - C ROOF PLAN</b>	
<small>Copyright 2024 JW Collection. All rights reserved. No portion of this document may be utilized, in whole or part, without the prior written permission of JW Collection. A \$1,000.00 reward is available to the first provider of information leading to the successful prosecution of a claim made by JW Collection for copyright infringement.</small>	
2355 LOG CABIN DRIVE, ATLANTA, GA 30339 770.809.6010	
<b>A3.0</b>	