



YUKON LAND FOR SALE

Listing ID
2295

Property Type
Land/Lots

PROPERTY LOCATION

11133 SW 29th St
Yukon, OK 73099
Canadian County



PROPERTY OVERVIEW

Acres **8.00**
Land Sq.Ft. **348,480**
Asking Price **\$1,200,000.00**
Price / Sq.Ft. **\$3.44**

PROPERTY DETAILS

Land Dim. **262' x 1330' (mol)** Topo **Level** Electric **OG&E** Sewer **City of OKC**
Zoning **AGRI** RE Taxes **\$1,610 (25')** Gas **ONG** Water **City of OKC**
Land Size Source **Canadian County Assessor**

WEB LINKS

TLR Web page www.thomaslay.com/11133-sw-29th.html
CoStar/LoopNet ID **39213258**

PROPERTY COMMENTS

Located between S Mustang Road and Sara Road on the north side of SW 29th Street in Yukon, Oklahoma.

Site is 8.00 acre currently zoned AGRI within the City of OKC limits. Metal barn on property. Rapidly growing area with close access to Kilpatrick Turnpike.

BROKER CONTACT INFORMATION



Ron Gary
Senior Advisor

Direct: **405.721.5691**
Mobile: **405.476.0746**
Email: ron@thomaslay.com



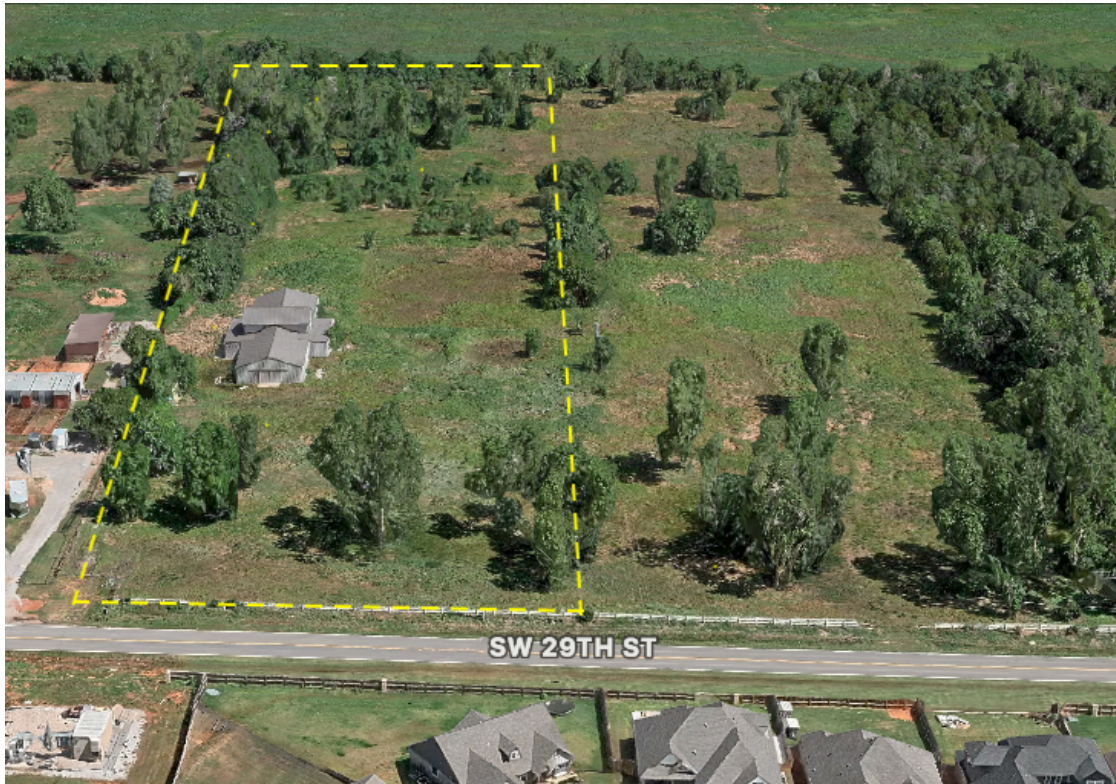
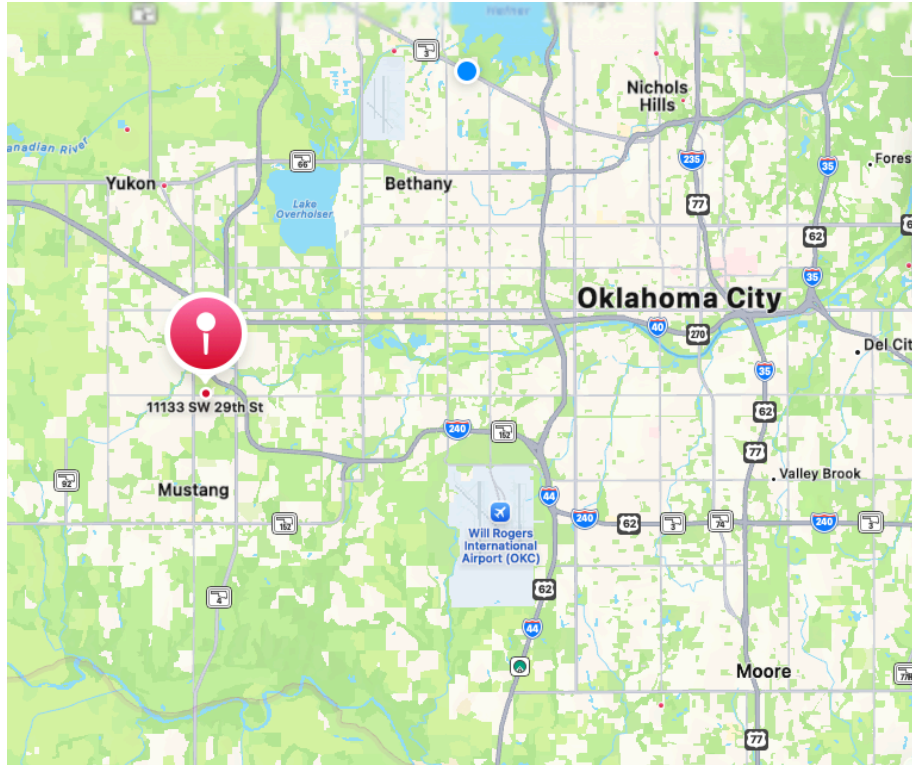
5500 NW Expressway, Suite C
Oklahoma City, OK 73132
Office 405.721.5588



ThomasLay.com

The above information, while not guaranteed, is from reliable sources. Subject to change, errors, omissions, removal from the market, and prior sale or lease. THE PROSPECTIVE BUYER/TENANT SHOULD CAREFULLY VERIFY ALL INFORMATION CONTAINED HEREIN.

11133 SW 29th St, Yukon



The above information, while not guaranteed, is from reliable sources. Subject to change, errors, omissions, removal from the market, and prior sale or lease. THE PROSPECTIVE BUYER/TENANT SHOULD CAREFULLY VERIFY ALL INFORMATION CONTAINED HEREIN.