

HRTC

HIGHLANDS RANCH TOWN CENTER

9325 DORCHESTER ST.
HIGHLANDS RANCH, CO 80129

2ND FLOOR OFFICE
ABOVE RETAIL
12,177 SF



LIVE, WORK, PLAY

Highlands Ranch Town Center is a 164,687 square foot mixed-use development in the heart of Highlands Ranch, a suburban community of over 85,000, consists of seven buildings surrounding a town square park. It is adjacent to the Civic Green amphitheater, library and transportation center.

- + 12,177 RSF ON 2ND FLOOR
- + 3.5:1,000 PARKING - 25% COVERED
- + BUILDING SIGNAGE AVAILABLE

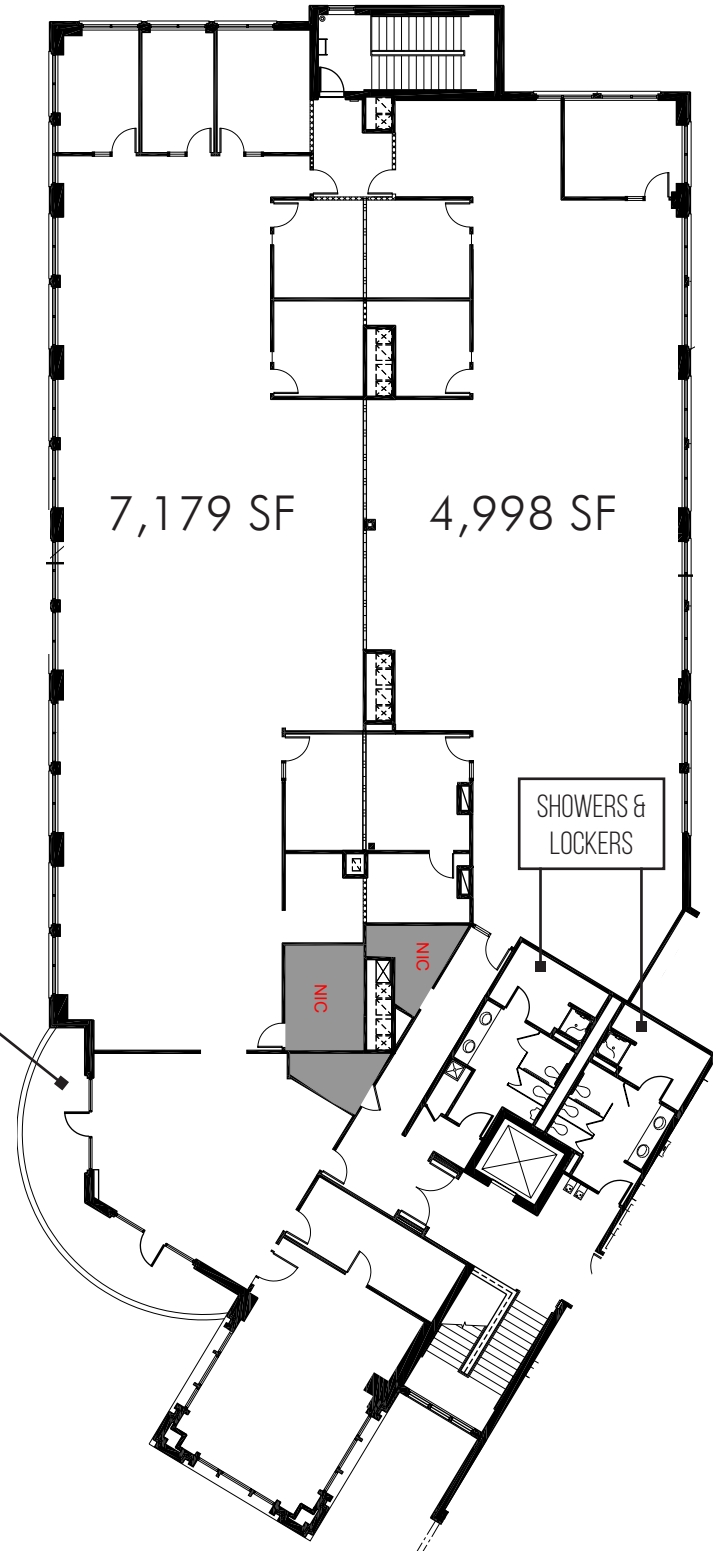


**FANTASTIC
MOUNTAIN VIEWS**



SUITE 250 | 12,177 SF

Divisible to 4,998 SF and 7,179 SF



PRIVATE PATIO



HIGHLANDS RANCH



FOR MORE INFORMATION CONTACT:

MITCH BRADLEY

SENIOR VICE PRESIDENT

720.528.6311

MITCH.BRADLEY@CBRE.COM

Shea Properties

CBRE

CBRE | 5455 Landmark PI | Suite C102 | Greenwood Village, CO 80111 | www.cbre.com/denver

© 2022 CBRE, Inc. All rights reserved. This information has been obtained from sources believed reliable, but has not been verified for accuracy or completeness. You should conduct a careful, independent investigation of the property and verify all information. Any reliance on this information is solely at your own risk. CBRE and the CBRE logo are service marks of CBRE, Inc. All other marks displayed on this document are the property of their respective owners, and the use of such logos does not imply any affiliation with or endorsement of CBRE. Photos herein are the property of their respective owners. Use of these images without the express written consent of the owner is prohibited. PMStudio_March2023