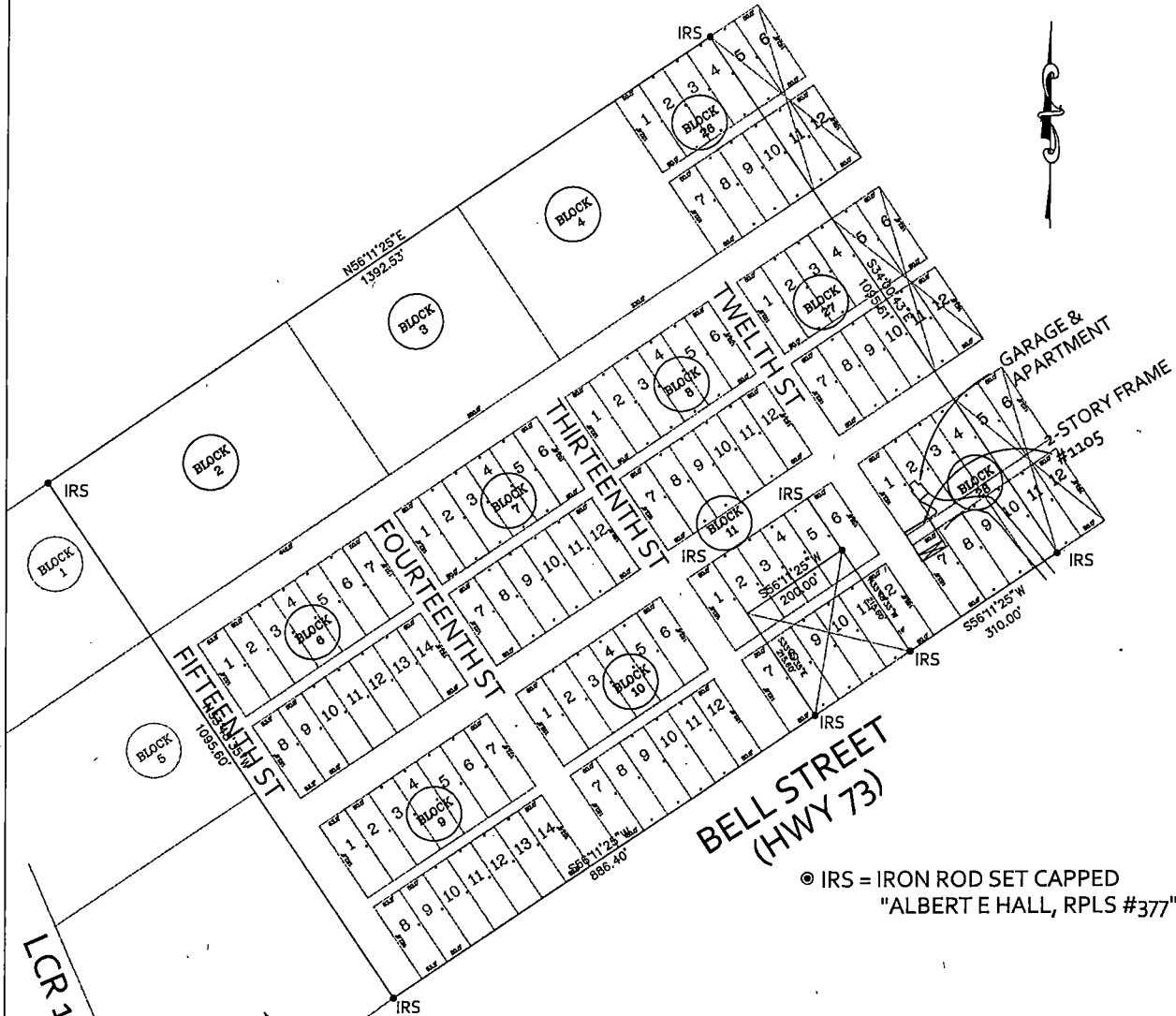


BEING A MAP OF BLOCKS 2-4 AND 6-10. BLOCK 11 LOTS 1,6,7,12  
 AND BLOCK 26, BLOCK 27 AND BLOCK 28 LOTS 1-4 AND 7-10,  
 SAVE AND EXCEPT THE SOUTHEASTERLY 109.6' OF LOTS 2,-5, BLOCK 11  
 ALL ROADS AS INDICATED ON MAP  
 WEST ADDITION COOLIDGE, CITY OF COOLIDGE,  
 LIMESTONE COUNTY, TEXAS



**BELL STREET  
(HWY 73)**

● IRS = IRON ROD SET CAPPED  
 "ALBERT E HALL, RPLS #377"

**SURVEYOR'S CERTIFICATION**

I, ALBERT HALL, HEREBY CERTIFY THAT  
 THIS SURVEY WAS MADE ON THE GROUND  
 UNDER MY SUPERVISION AND CORRECTLY  
 SHOWS THE BOUNDARY LINES AND DIMENSIONS  
 OF THE LAND INDICATED THEREON.

*Albert E. Hall*

ALBERT E. HALL DATE 5-25-22  
 REGISTERED PROFESSIONAL LAND SURVEYOR #377

