

FOR LEASE: ±16,024 SF

Colliers

ADJACENT 17,224 SF BLDG
ALSO AVAILABLE

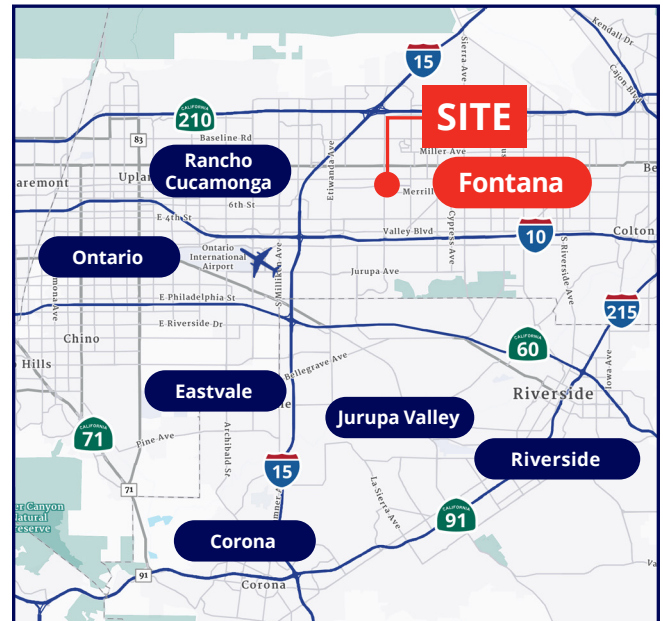
Certificates of
Occupancy Issued

Immediate
Availability



8655 BEECH AVENUE | FONTANA, CALIFORNIA

- Brand New 2026 Construction
- ±16,024 SF Freestanding Building on ±0.86 AC
- ±1,200 SF Office (Expandable to ±2,400 SF)
- 19' Minimum Warehouse Clearance
- Three (3) Ground Level Doors (12' x 14')
- 800 Amps; 277/480 Volts Power
- Fire Sprinkler System: 0.20 GPM/1,500 SF
- Fenced, Lighted, Paved Yard
- [M-2 Zoning - Wide Range of Acceptable Uses](#)
- Centrally Located with Proximity to the I-10, I-15, and I-210 Freeways



RICK NUNEZ, SIOR

Executive Vice President
+1 909 937 6310
CA Lic. 01235687
rick.nunez@colliers.com

MATEO MOBILIA

Associate
+1 909 937 6372
CA Lic. 02218220
mateo.mobilia@colliers.com

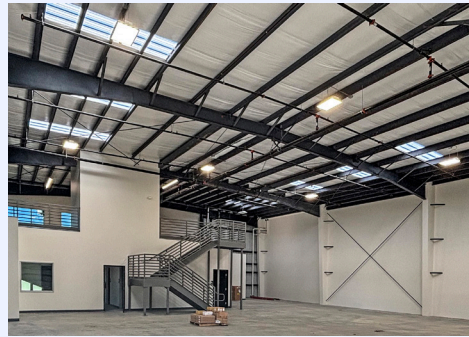
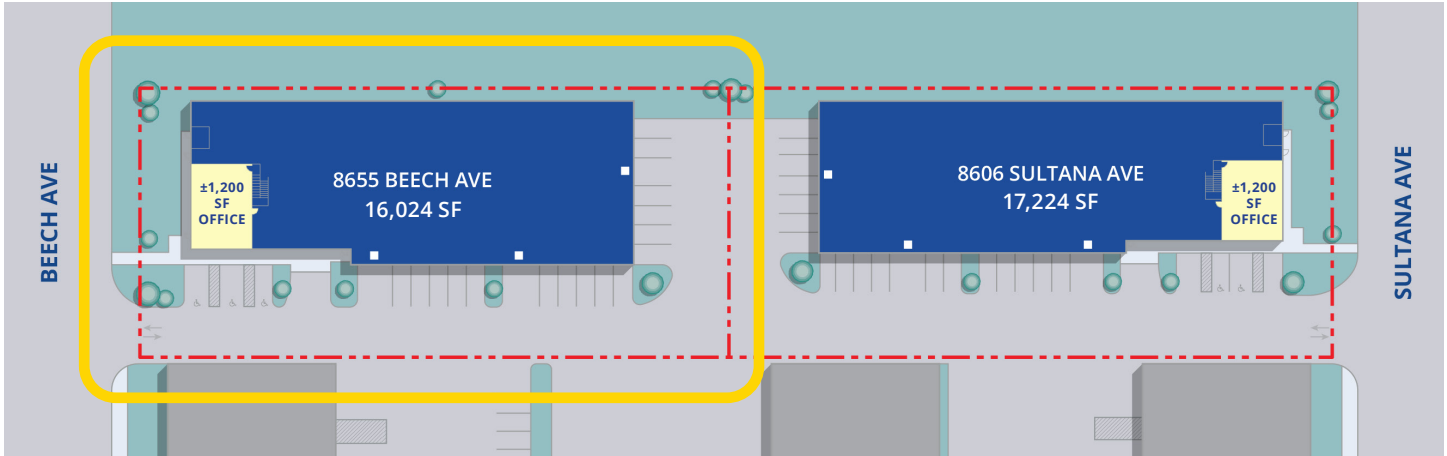
MICHAEL ROMERO

Sr. Client Services Specialist
+1 909 396 4307
CA Lic. 01716426
michael.romero@colliers.com

FOR **LEASE:** ±16,024 SF

Colliers

ADJACENT 17,224 SF BLDG ALSO AVAILABLE TO COMBINE



RICK NUNEZ, SIOR
Executive Vice President
+1 909 937 6310
CA Lic. 01235687
rick.nunez@colliers.com

MATEO MOBILIA
Associate
+1 909 937 6372
CA Lic. 02218220
mateo.mobilia@colliers.com

MICHAEL ROMERO
Sr. Client Services Specialist
+1 909 396 4307
CA Lic. 01716426
michael.romero@colliers.com

Information herein has been obtained from sources deemed reliable, however its accuracy cannot be guaranteed. The user is required to conduct their own due diligence and verification. This publication is the copyrighted property of Colliers and /or its licensor(s). Copyright © 2026. All rights reserved.