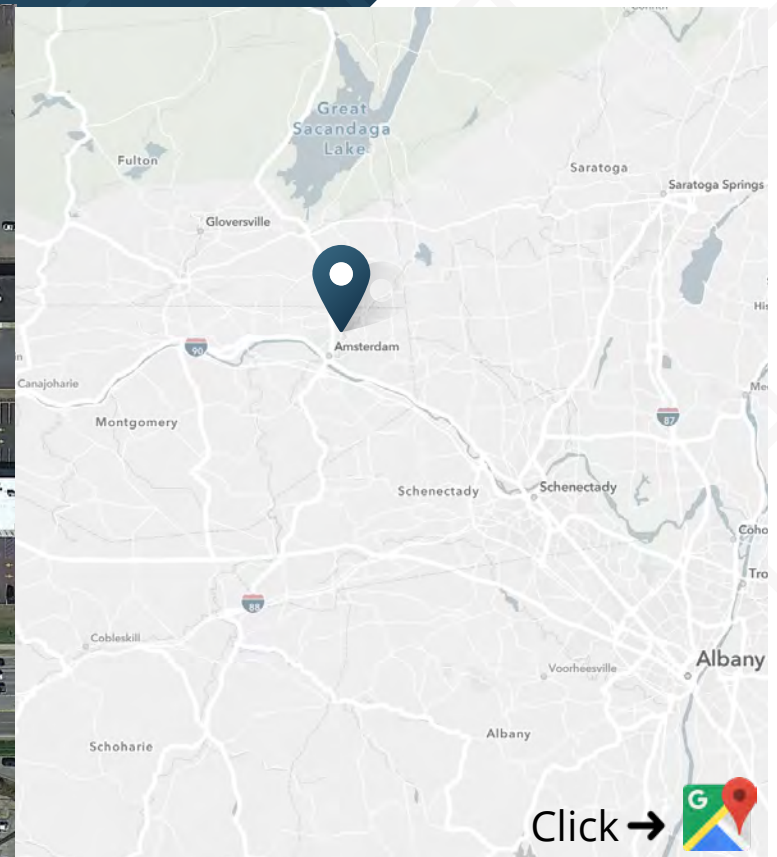


# Lowe's Carve Out Available For Sale

Highway 30 & Route 15 | Amsterdam, NY



Click →

**OUTPARCEL FOR SALE**

0.71 Acres

Lot

Immediate

Possession

Upon Request

Asking Price

## ABOUT THE PROPERTY

- Main retail corridor with two signalized access points
- Excellent visibility from Highway 30
- Traffic count: 17,836 vehicles per day on Highway 30
- Join Lowe's, The Home Depot, Hannaford, Walmart, Target, Kohl's, PetSmart, Marshall and Big Lots
- Zoned M-1 with B-1 Business uses - [MAP](#) - [REGULATIONS](#)  
Range of permitted uses including but not limited to, retail store, bank, restaurant, animal hospital or child care

## CONTACTS

**Jon Spadafino**

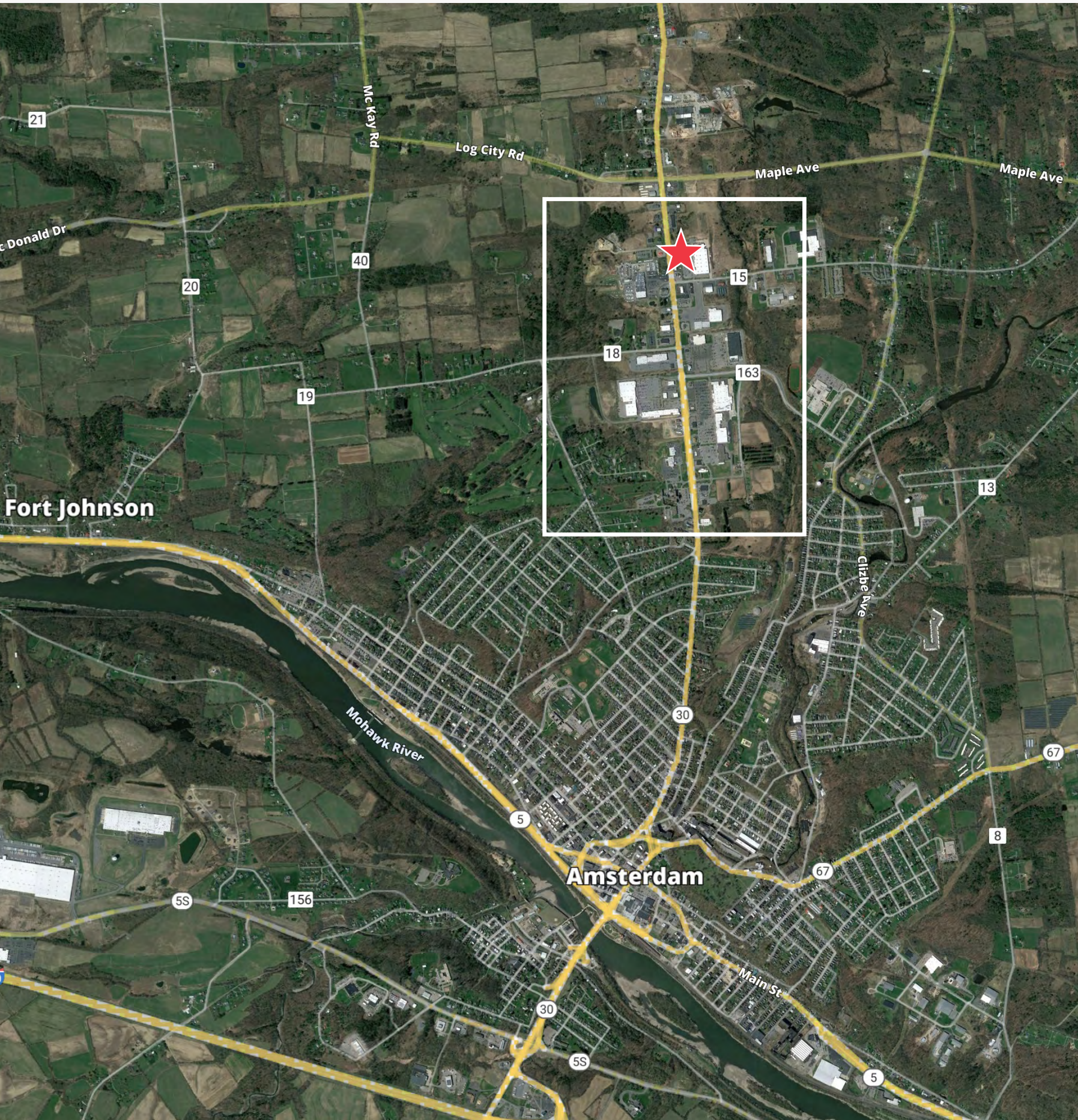
212.710.5257

jon.spadafino@srsre.com

**Hugh Kelly**

212.710.5252

hugh.kelly@srsre.com



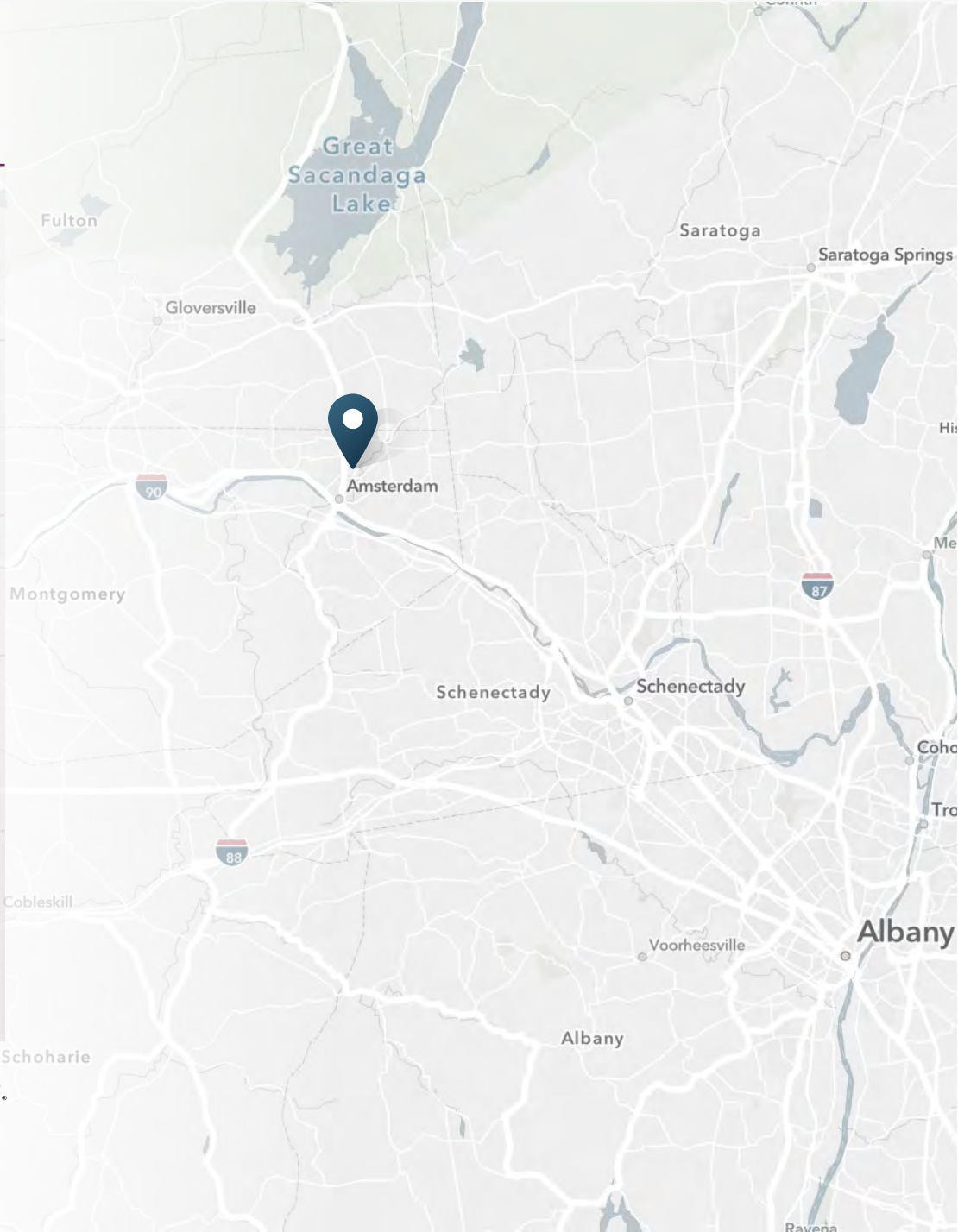
# Lowes Carve Out Available For Sale

Highway 30 & Route 15 | Amsterdam, NY



## DEMOGRAPHIC HIGHLIGHTS

Population	3 miles	5 miles	10 miles
2023 Estimated Population	23,139	28,587	70,727
2028 Projected Population	23,051	28,424	70,072
Projected Annual Growth Rate 2023 to 2028	-0.08%	-0.11%	-0.19%
<b>Daytime Population</b>			
2023 Daytime Population	23,384	29,502	68,608
Workers	9,999	13,255	29,589
Residents	13,385	16,247	39,019
<b>Income</b>			
2023 Est. Average Household Income	\$71,353	\$77,577	\$82,025
2023 Est. Median Household Income	\$50,279	\$52,983	\$57,288
<b>Households &amp; Growth</b>			
2023 Estimated Households	9,640	11,951	29,561
2028 Estimated Households	9,710	12,024	29,706
Projected Annual Growth Rate 2023 to 2028	0.14%	0.12%	0.10%
<b>Race &amp; Ethnicity</b>			
2023 Est. White	70%	73%	82%
2023 Est. Black or African American	4%	4%	3%
2023 Est. Asian or Pacific Islander	2%	1%	1%
2023 Est. American Indian or Native Alaskan	1%	0%	0%
2023 Est. Other Races	11%	10%	5%
2023 Est. Hispanic	27%	24%	12%



> **Want more?** Contact us for a complete demographic, foot-traffic, and mobile data insights report.





**SRS Real Estate Partners**  
340 Madison Avenue  
New York, NY 10173  
212.710.5250

**Jon Spadafino**  
212.710.5257  
[jon.spadafino@srsre.com](mailto:jon.spadafino@srsre.com)

**Hugh Kelly**  
212.710.5252  
[hugh.kelly@srsre.com](mailto:hugh.kelly@srsre.com)

**SRSRE.COM**

© SRS Real Estate Partners

The information presented was obtained from sources deemed reliable;  
however SRS Real Estate Partners does not guarantee its completeness or accuracy.