



## Furnished, first floor office space in prime location

- Professional suite features one private office with spacious open area perfect for flexible workstations
- Ample on-site parking
- Conveniently located off I-85
- 10 minutes to GSP Airport
- 15 minutes to downtown Greenville

### Get more information

**Ned Reynolds**, Vice President  
+1 336.260.3148  
[ned.reynolds@avisonyoung.com](mailto:ned.reynolds@avisonyoung.com)

**Will Hannah**, Associate  
+1 864.508.4525  
[will.hannah@avisonyoung.com](mailto:will.hannah@avisonyoung.com)

# Property overview

Municipality	Greenville
County	Greenville
Zoning	POD
Space Size	±1,040 sf
Asking Rate	\$1,800/month
Lease Type	Full service
Date Available	12/15/2025

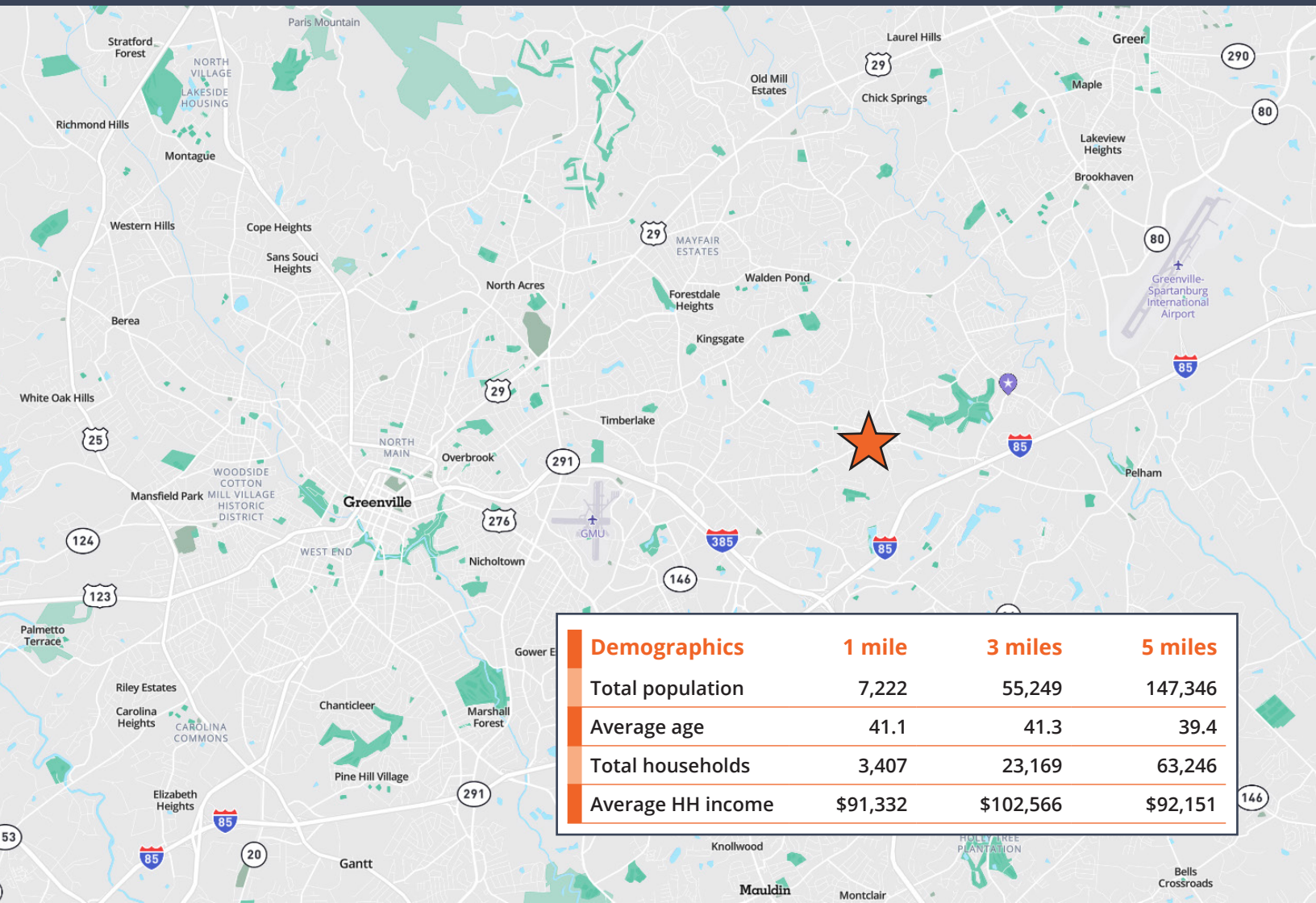


# Location overview

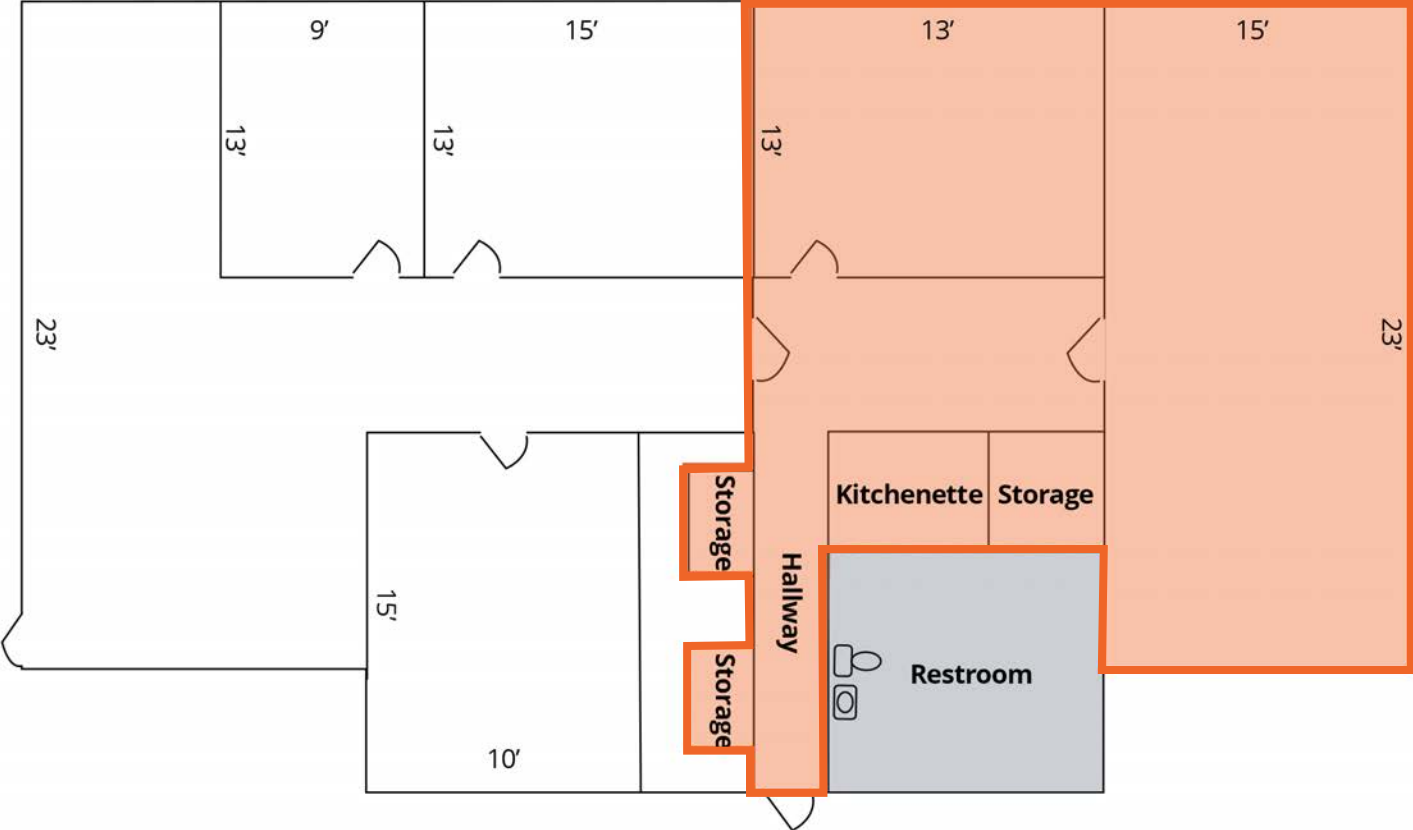
The property enjoys immediate proximity to I-85 and Pelham Road, providing seamless connectivity to Greenville, Spartanburg, and GSP International Airport. Surrounded by a mix of corporate offices, medical practices, and upscale residential communities, the area is anchored by major employers such as Michelin North America and is just minutes from the Thornblade Club. The surrounding 29615 zip code is known for its strong demographics, top-rated schools, and a growing commercial presence, making it an ideal location for businesses seeking visibility, convenience, and long-term value.

## East Park at Pelham tenant mix:

- Core Financial Services
- AnnieMac Home Mortgage
- April Huguenin Studios
- Homewatch CareGivers of Greenville
- Blackwelder Law
- The Matchmaking Company
- redi-Group North America
- Crescent Mortgage Company
- ImageQuix
- Tyler Simpson: Allstate Insurance
- Appraisal Agency of Greenville
- Tuttle and Associates
- Zion Community Church
- Blue Letter Bible
- Crescent and Main boutique
- Canopy Lawn Care
- Bright Arising Home Care
- Moore Accounting & Tax services
- Moore Beauston & Woodham
- Fred Adams Tax Group
- World Awaits Cultural Tours
- Cohen Company
- Keystone Health & Wellness
- Providence Realty
- Affinity Hospice
- Berkshire Hathaway



# Floorplan



 Available

 Common areas



**Ned Reynolds**  
Vice President  
+1 336.260.3148

**Will Hannah**  
Associate  
+1 864.508.4525