

Jenks Landing

11476 S. Union Ave., Jenks, OK

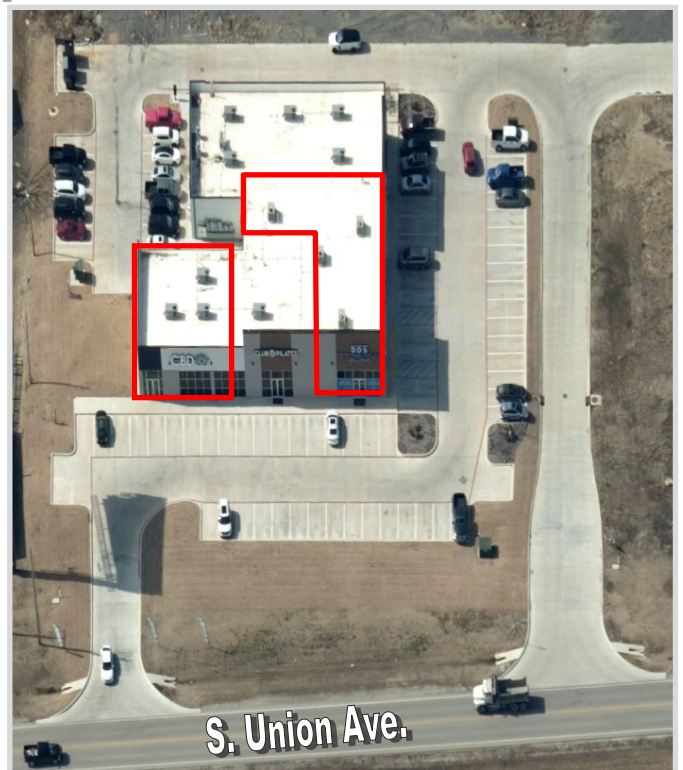
www.walmancommercial.com

918-481-8888



HWY 75 Retail Space Available

- 1,590 sf & 4,612 sf end caps available
- Conveniently located less than 1 mile south of the Creek Turnpike and HWY 75 intersection, with excellent access to both.
- Excellent visibility to HWY 75
- Overall trade area includes Jenks, Glenpool and Sapulpa.
- Locally owned and managed
- Immediate trade area features Walmart, Chick-fil-a, Starbucks, McDonald's and many more.



7060 S. Yale
Suite 900
Tulsa, OK 74136
Tel: 918.481.8888
Fax: 918.481.8866

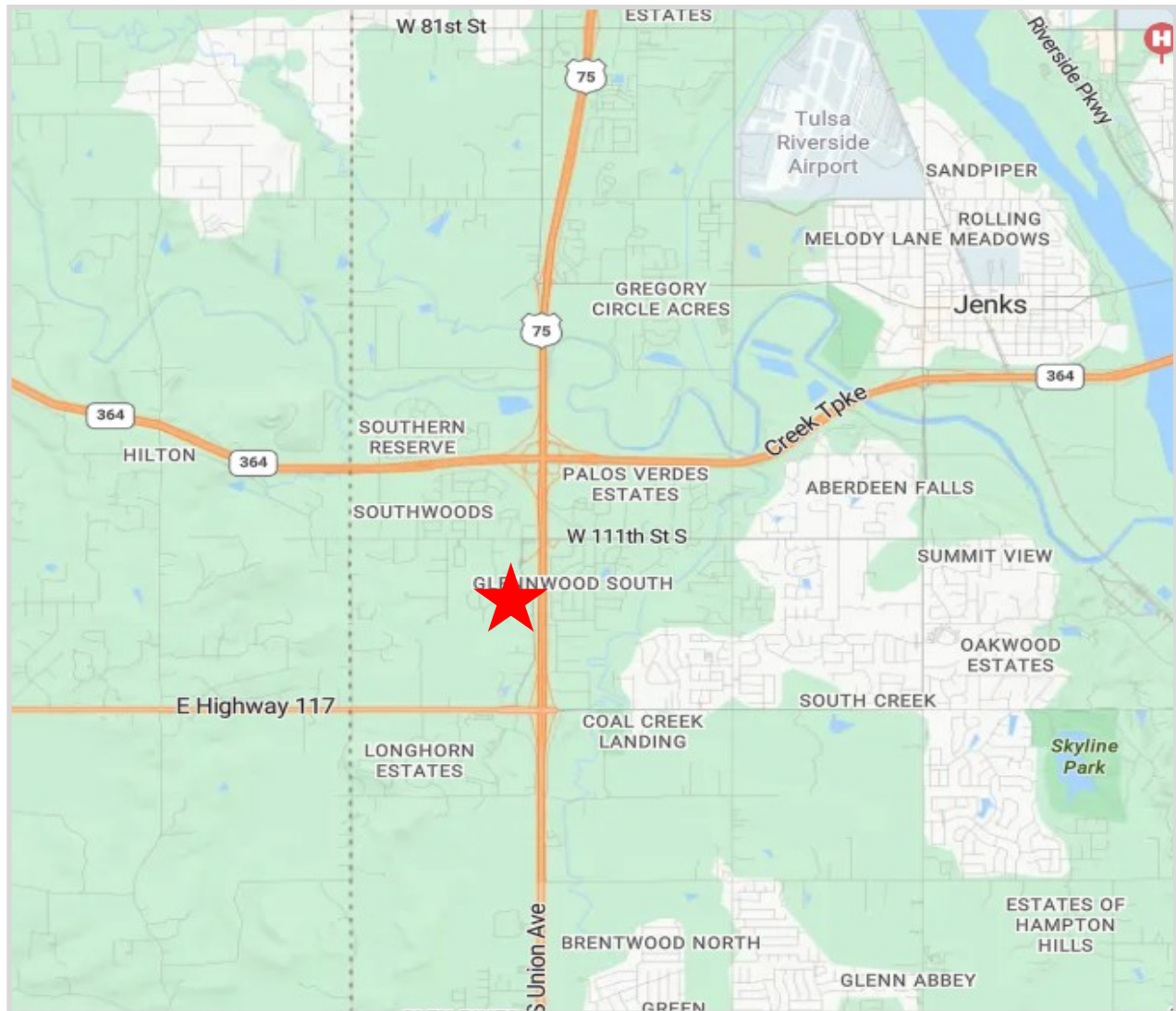
All statements herein are for informational purposes only and are believed to be reliable; however, no warranty or representation is made to the accuracy thereof and the same is submitted subject to errors, omissions, change of price, terms, conditions and prior sale or lease.

Jenks Landing

11476 S. Union Ave., Jenks, OK

www.walmancommercial.com

918-481-8888



DEMOGRAPHICS

MILE RADIUS	1	3	5
Population:	3,707	25,107	76,740
Households:	1,196	8,932	28,909
Avg. H.H. Income:	\$114,797	\$107,403	\$95,873
Traffic Count:	HWY 75 - 48,418 VPD		

jenks
LANDING

All statements herein are for informational purposes only and are believed to be reliable; however, no warranty or representation is made to the accuracy thereof and the same is submitted subject to errors, omissions, change of price, terms, conditions and prior sale or lease.