



Northwestern Professional Centre

24500 Northwestern Hwy, Southfield, MI 48075



JMC MANAGEMENT LLC
A FULL SERVICE BROKERAGE AND MANAGEMENT FIRM

Trena Edmondson

JMC Management, LLC

24500 Northwestern Hwy, Suite 100, Southfield, M 48075

Trena.edmondson@jmcmanagement.com

(586) 427-9410 Ext: 113



Northwestern Professional Centre

\$25.00 /SF/YR

2020 newly designed/completed exterior/interior
296 SF to 2,247 SF of office space available
Maximum window-lined suites
Newly top-coated parking lot
New owner and management
Aggressive rental rates in a quality project
Central access to all Metro-Detroit areas
Tenant improvements readily available...



Rental Rate:	\$25.00 /SF/YR
Property Type:	Office
Property Subtype:	Office
Building Class:	C
Rentable Building Area:	15,632 SF
Year Built:	1971
Walk Score ®:	42 (Car-Dependent)
Rental Rate Mo:	\$2.08 /SF/MO

2nd Floor Ste 200A

Newly renovated space with private bathroom

1

Space Available	612 SF
Rental Rate	\$25.00 /SF/YR
Date Available	Now
Service Type	Modified Gross
Space Type	Relet
Space Use	Office
Lease Term	Negotiable

2nd Floor Ste 205

2

Space Available	1,064 SF
Rental Rate	\$25.00 /SF/YR
Date Available	Now
Service Type	Modified Gross
Space Type	Relet
Space Use	Office
Lease Term	Negotiable

2nd Floor Ste 206a

3

Space Available	1,711 SF
Rental Rate	\$25.00 /SF/YR
Date Available	Now
Service Type	Modified Gross
Built Out As	Professional Services
Space Type	Relet
Space Use	Office
Lease Term	Negotiable

Major Tenant Information

Tenant	SF Occupied	Lease Expired
Ian B Lyngklip	-	
James C Warr & Assoc	600	
Lyngklip & Assoc Consumer Law	600	
Parent Prayer Line Network	-	



2450 Northwestern Hwy, Southfield, MI 48075

2020 newly designed/completed exterior/interior
296 SF to 2,247 SF of office space available
Maximum window-lined suites
Newly top-coated parking lot
New owner and management
Aggressive rental rates in a quality project
Central access to all Metro-Detroit areas
Tenant improvements readily available

Property Photos



Building Photo



Building Photo

Property Photos



Building Photo

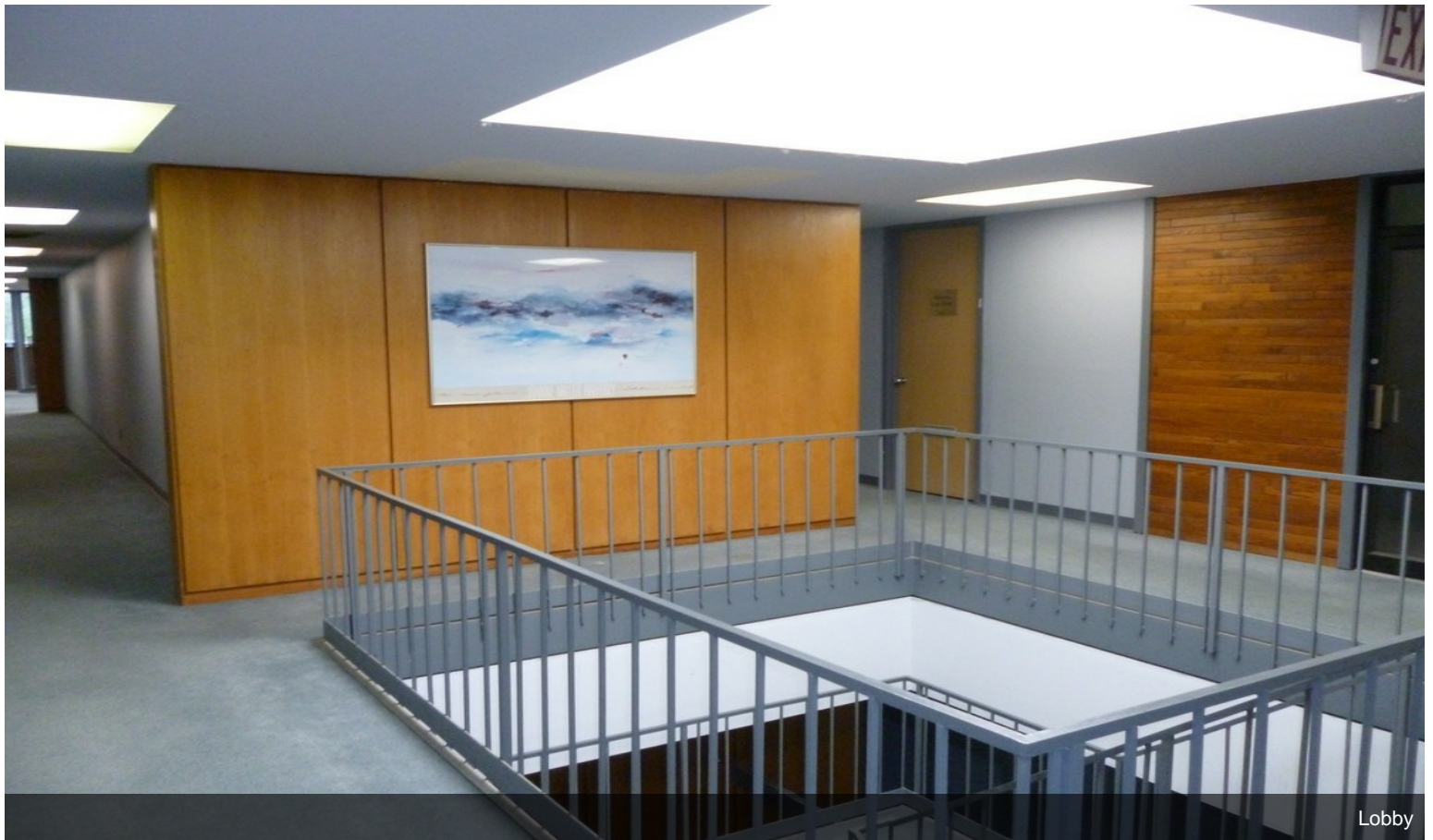


Building Photo

Property Photos

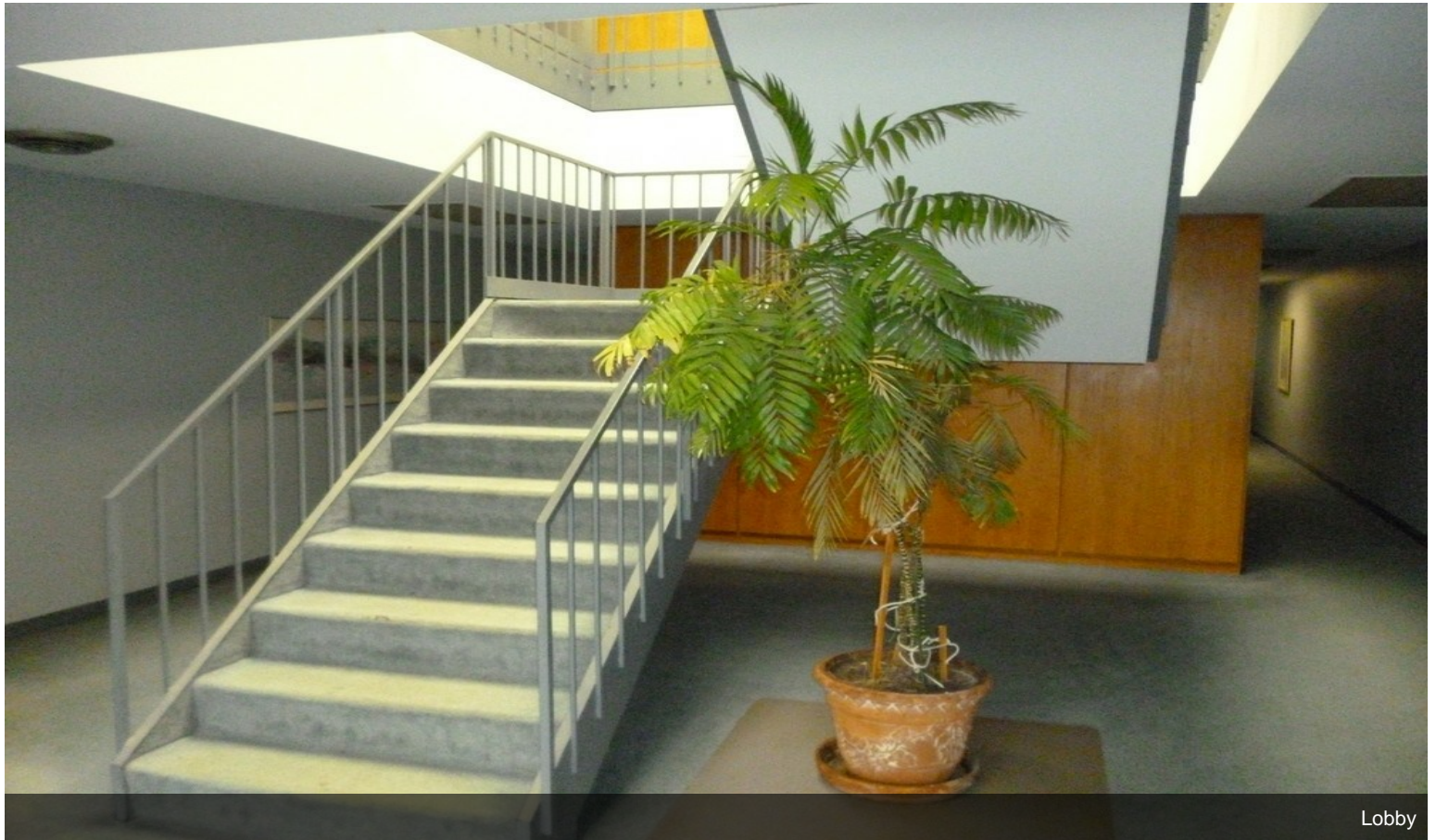


Building Photo



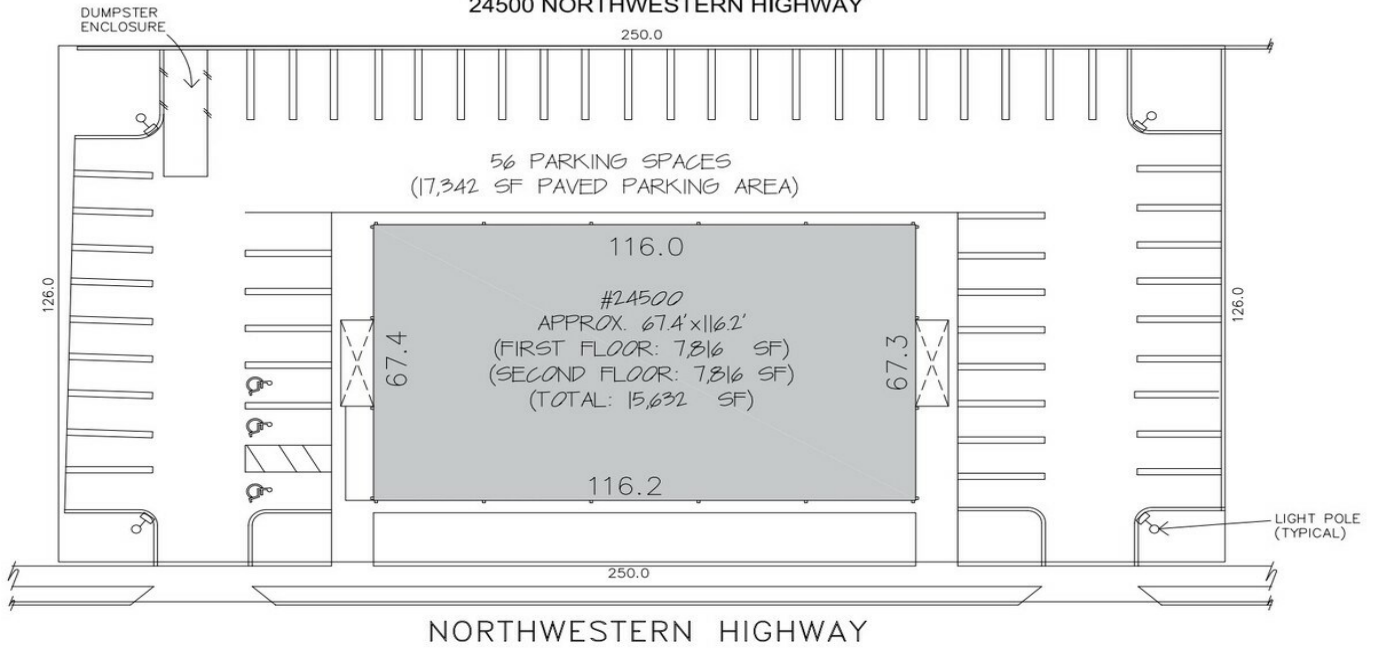
Lobby

Property Photos



NORTHWESTERN PROFESSIONAL CENTRE

24500 NORTHWESTERN HIGHWAY



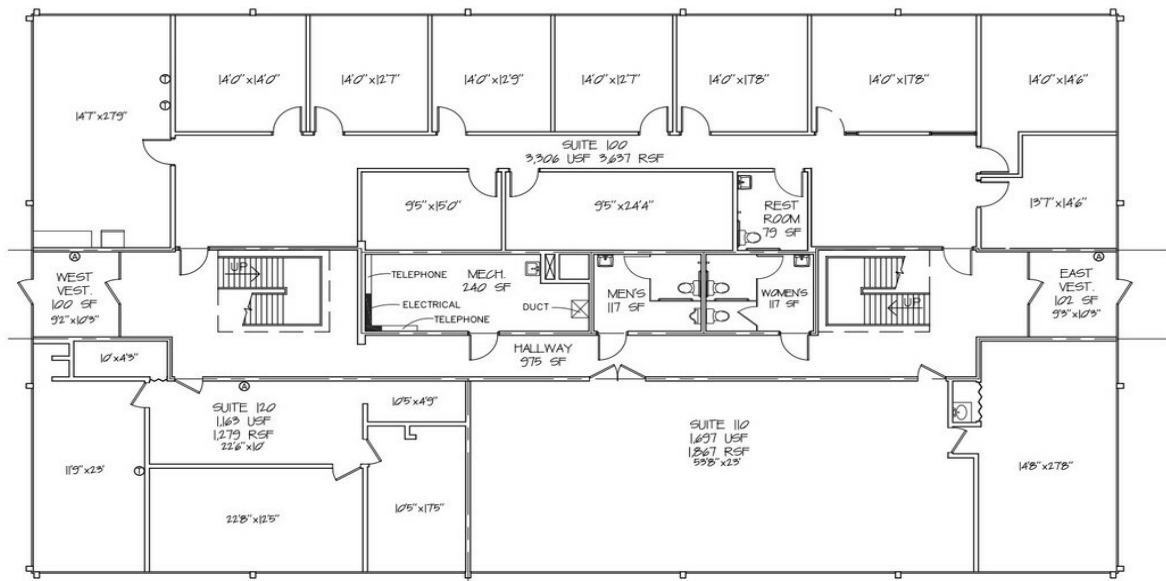
JMC MANAGEMENT LLC
A FULL SERVICE BROKERAGE AND MANAGEMENT FIRM

SITE PLAN
NOT TO SCALE

NOTES:
1. TENANT SPACE AREA CALCULATIONS WHERE EXISTING DEMISING WALLS ARE PRESENT: DETERMINED BY MEASUREMENT TO THE CENTER OF DEMISING WALLS/PARTITIONS AND TO THE EXTERIOR FACE OF EXTERIOR WALLS.
2. INTERIOR TENANT SPACE WIDTH AND DEPTH DIMENSIONS ARE APPROXIMATE AS SHOWN. FOR EXACT WIDTH AND DEPTH DIMENSIONS, EACH TENANT SPACE SHOULD BE MEASURED BY A QUALIFIED PROFESSIONAL.
3. THE ORIENTATION OF THE INDICATED NORTH ARROW MAY NOT BE "TRUE NORTH", BUT IS SUBSTANTIALLY NORTH. AS SUCH, IT IS "CALLED NORTH" AND IS NOT INTENDED FOR NAVIGATIONAL USAGE.

NORTHWESTERN PROFESSIONAL CENTRE

24500 NORTHWESTERN HIGHWAY



Front of Building First Floor

LEGEND	
ALARM	⊙
THERMOSTAT	⊗
SENSOR	⊙
ELECTRICAL PANEL	⊞

NOTES:
1. TENANT SPACE AREA CALCULATIONS WHERE EXISTING DEMISING WALLS ARE PRESENT: DETERMINED BY MEASUREMENT TO THE CENTER OF DEMISING WALLS/PARTITIONS AND TO THE EXTERIOR FACE OF EXTERIOR WALLS.
2. INTERIOR TENANT SPACE WIDTH AND DEPTH DIMENSIONS ARE APPROXIMATE AS SHOWN. FOR EXACT WIDTH AND DEPTH DIMENSIONS, EACH TENANT SPACE SHOULD BE MEASURED BY A QUALIFIED PROFESSIONAL.
3. THE ORIENTATION OF THE INDICATED NORTH ARROW MAY NOT BE "TRUE NORTH", BUT IS SUBSTANTIALLY NORTH. AS SUCH, IT IS "CALLED NORTH" AND IS NOT INTENDED FOR NAVIGATIONAL USAGE.
4. UNIT SIZES & AREA ARE APPROXIMATE.



JMC MANAGEMENT LLC
A FULL SERVICE BROKERAGE AND MANAGEMENT FIRM

FLOOR PLAN
NOT TO SCALE

Floor Plan

