

18922 LAKE DR. E  
CHANHASSEN / MINNESOTA



# Dell Five E

**1,923 SF Office  
For Lease**



# Property Overview

## 10 Building Business Park Totaling 620,000 SF

Dell Five is a prominent business park situated in the Southwest submarket in Chanhassen, MN. The park spans 60 acres and comprises 10 buildings, offering a total of 620,000 square feet of high-quality flexible space. The location provides significant frontage on Highway 5 and convenient access to Highways 212 and I-494.

*1,923 SF of office space with great visibility along Highway 5.*



# Building Specifications

---

Address 18912-18924 Lake Dr. E, Chanhassen, MN

---

Building Total SF 12,869 SF

---

Clear Height 18'

---

Year Built 1998

---

Lease Rates Negotiable

---

2026 Estimated Tax  
& Cam \$3.42 PSF Tax  
\$6.48 PSF CAM  
\$9.90 PSF Total

---

Power 480/277 volt, 3000 amp, 3-phase

---

Column Spacing 30' x 40'

---



# Floor Plan

Suite 18922

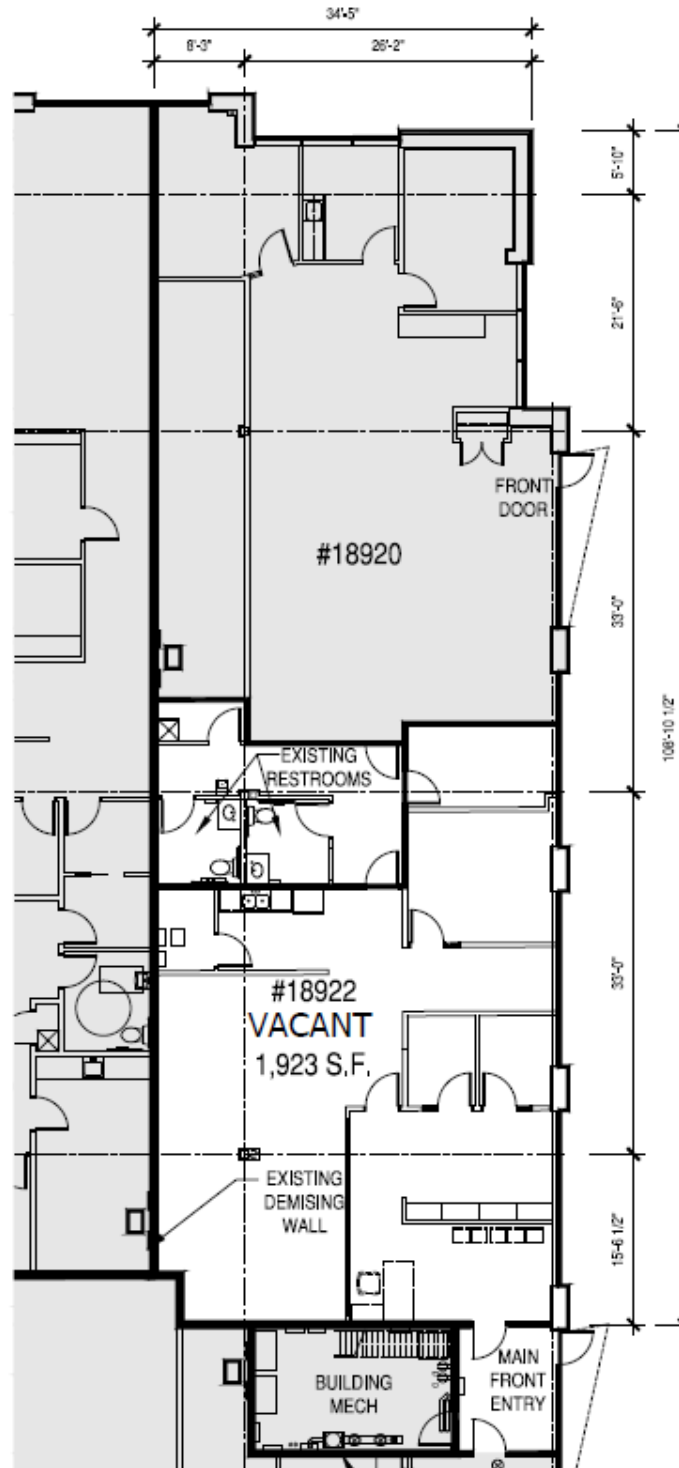
OFFICE

**1,923 SF**

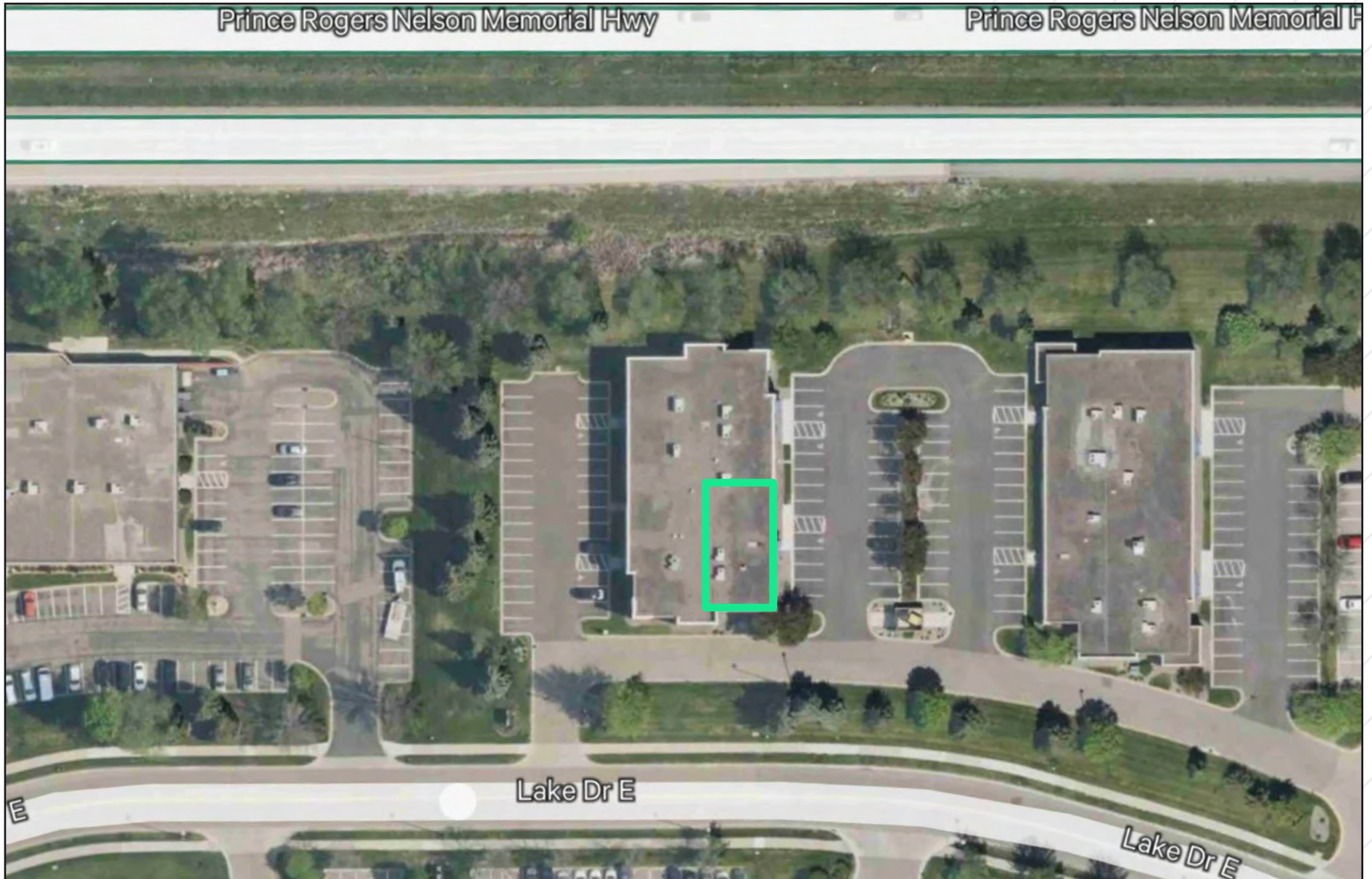
TOTAL

**1,923 SF**

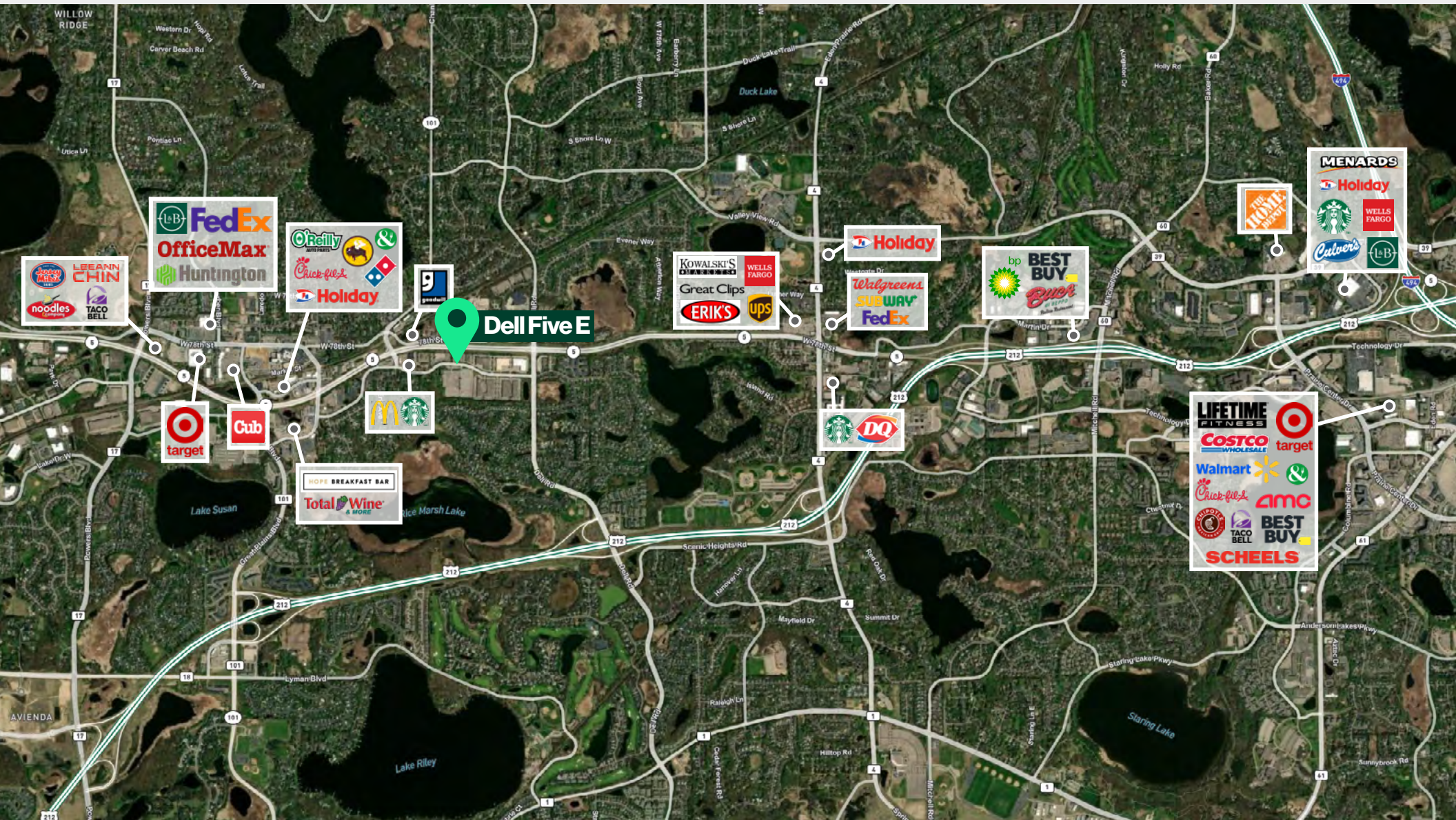
**10 Parking Stalls**



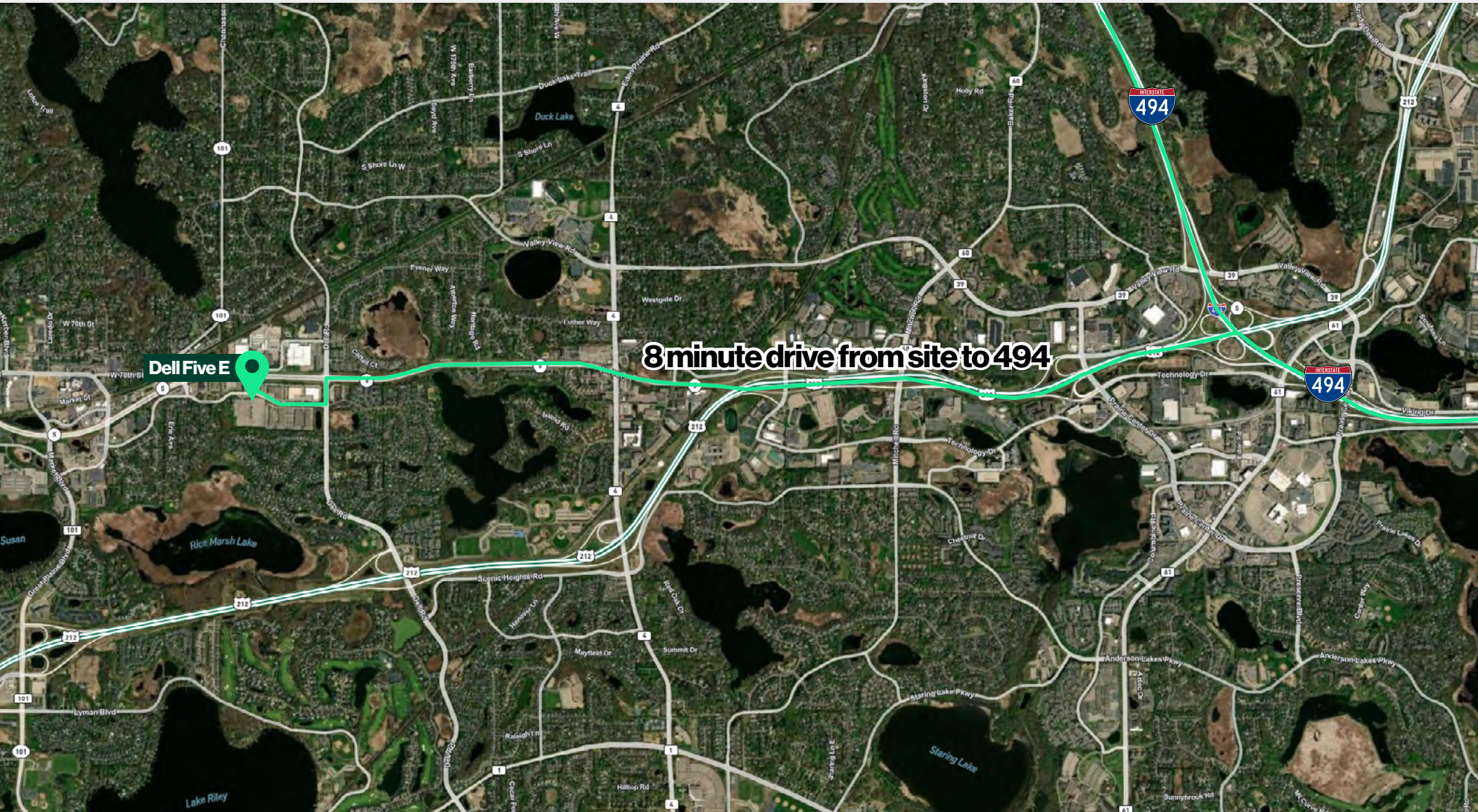
# Siteplan



# Amenity Map



# Drive Time Map





18922 LAKE DR. E  
CHANHASSEN / MINNESOTA



# Dell Five E

## 1,923 SF Office For Lease

**Tom Bennett**

Senior Vice President

+1612 386 6108

tom.bennett@cbre.com

**Austin Lovin**

First Vice President

+1612 336 4255

austin.lovin@cbre.com

**Parker Rickert**

Associate

+1612 845 8022

parker.rickert@cbre.com



© 2026 CBRE, Inc. All rights reserved. This information has been obtained from sources believed reliable but has not been verified for accuracy or completeness. CBRE, Inc. makes no guarantee, representation or warranty and accepts no responsibility or liability as to the accuracy, completeness, or reliability of the information contained herein. You should conduct a careful, independent investigation of the property and verify all information. Any reliance on this information is solely at your own risk. CBRE and the CBRE logo are service marks of CBRE, Inc. All other marks displayed on this document are the property of their respective owners, and the use of such marks does not imply any affiliation with or endorsement of CBRE. Photos herein are the property of their respective owners. Use of these images without the express written consent of the owner is prohibited.