

RETAIL SHOP SPACE FOR LEASE

# CHOWAN VILLAGE SHOPPING CENTER

831-841 West Main Street - Murfreesboro, NC 27855



2,870 - 8,415 SF AVAILABLE



For more information, contact:

**NICKI JASSY**  
BROKER

843 973 8235 | [nicki@twinriverscap.com](mailto:nicki@twinriverscap.com)

**TWIN RIVERS CAPITAL**

656 Ellis Oak Avenue, Suite 201  
Charleston, SC 29412  
[twinriverscap.com](http://twinriverscap.com)



# RETAIL SHOP SPACE FOR LEASE

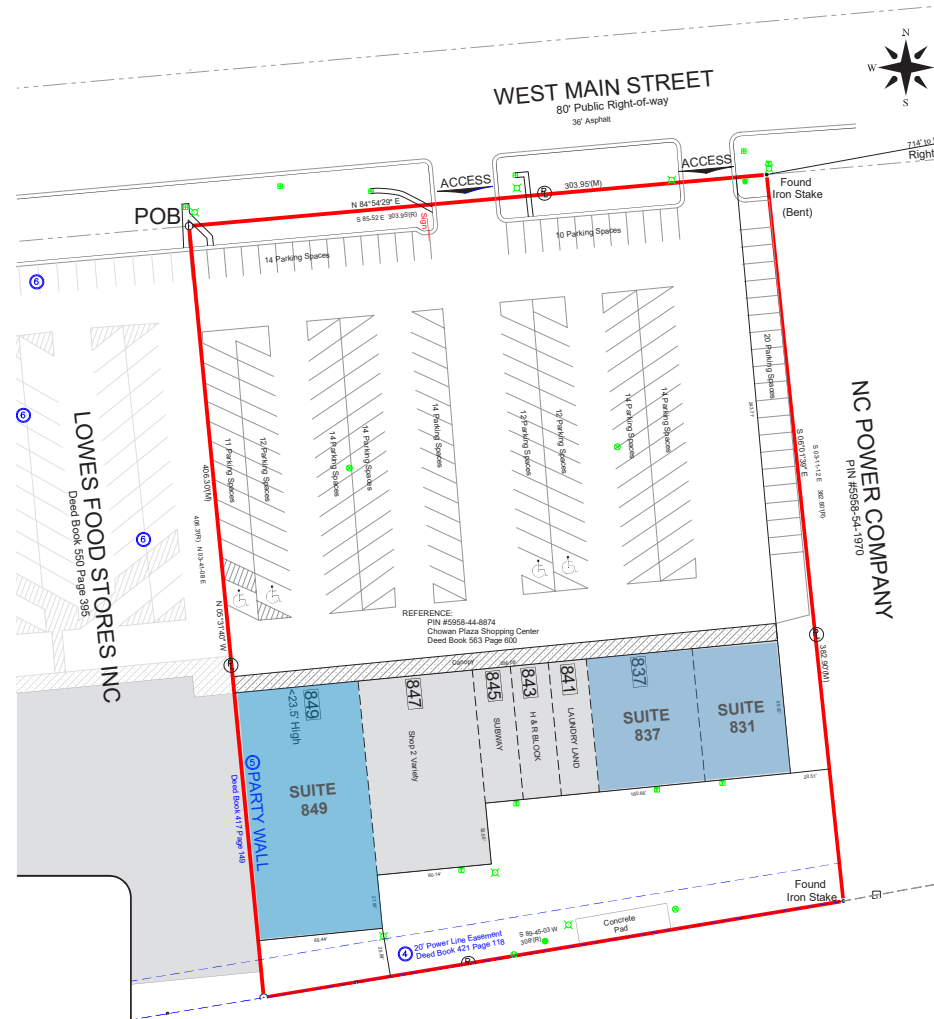
## CHOWAN VILLAGE SHOPPING CENTER

831-841 West Main Street - Murfreesboro, NC 27855



### AVAILABILITIES

Unit	Tenant	SF
SUITE 831	AVAILABLE	2,870
SUITE 837	AVAILABLE	4,200
SUITE 849	AVAILABLE	8,415



For more information, contact:

**NICKI JASSY**  
BROKER

843 973 8235 | nicki@twinriverscap.com

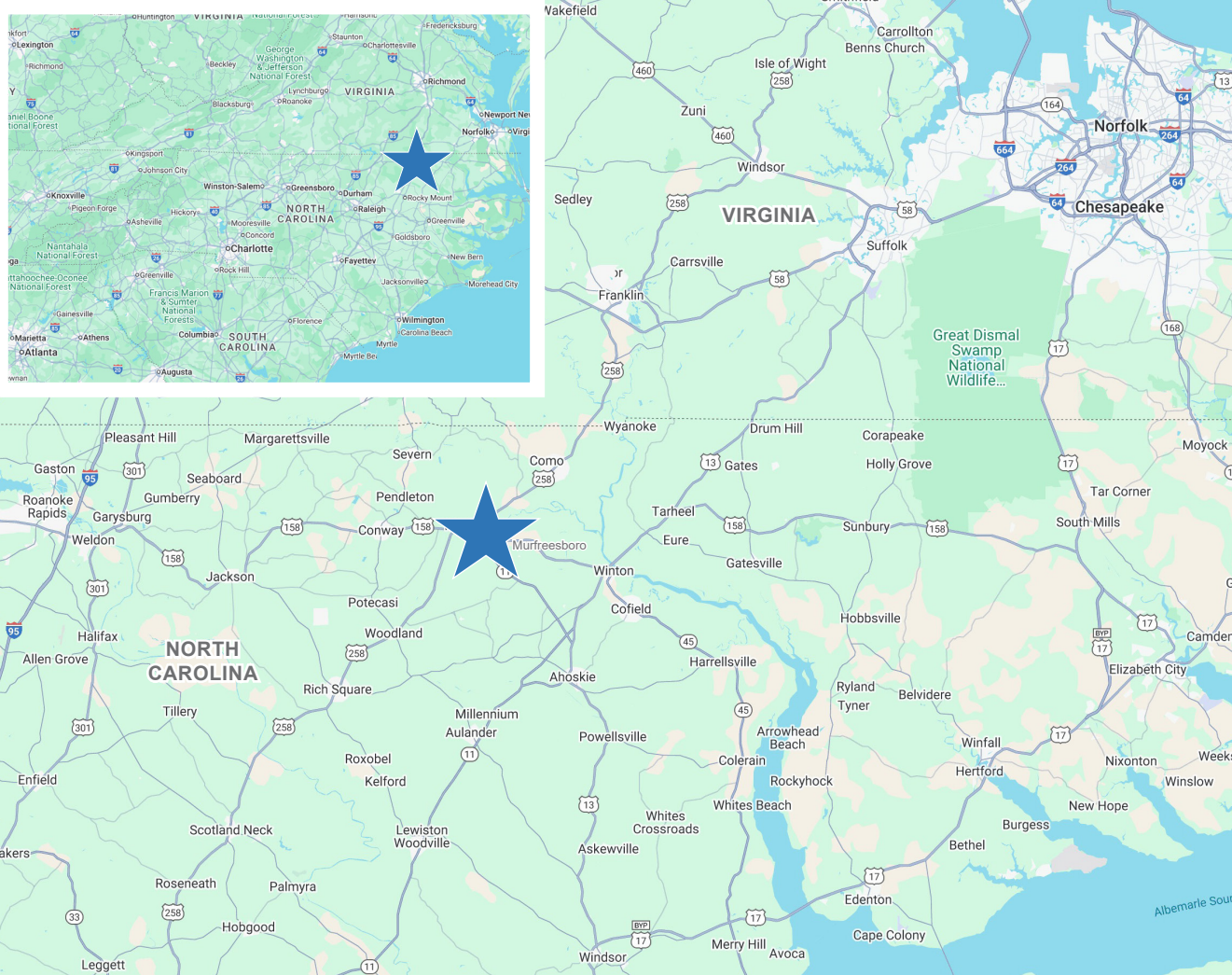
**TWIN RIVERS CAPITAL**

656 Ellis Oak Avenue, Suite 201  
Charleston, SC 29412  
twinriverscap.com

RETAIL SHOP SPACE FOR LEASE

# CHOWAN VILLAGE SHOPPING CENTER

831-841 West Main Street - Murfreesboro, NC 27855



## DEMOGRAPHICS

	3 Mile	5 Miles	10 Miles
Population (2025)	4,892	6,363	12,462
No. of Households (2025)	1,813	2,519	5,279
Avg. HH Income (2025)	\$73,721	\$77,058	\$75,101
Median HH Income (2025)	\$51,001	\$53,724	\$54,608

## TRAFFIC COUNTS

	VPD
Main St	7,014±
Storey Rd	1,400±

For more information, contact:

**NICKI JASSY**  
BROKER

843 973 8235 | nicki@twinriverscap.com

**TWIN RIVERS CAPITAL**

656 Ellis Oak Avenue, Suite 201  
Charleston, SC 29412  
twinriverscap.com