

ILIFF BUSINESS PARK

OFFICE/WAREHOUSE SPACE FOR LEASE



S. TRENTON WAY
&
E. ILIFF AVE.
DENVER, CO 80231



AVAILABILITY INFORMATION

AVAILABLE:	Suite G
SIZE:	4,074 SF
CLEAR HEIGHT:	12' - 13'
LOADING:	One (1) Drive-In
ELECTRICAL:	3-Phase
SPRINKLER:	None
RATE:	\$13.50/SF NNN
EXPENSES:	\$5.70/SF (Est. for 2025)
POWER:	To Be determined
HVAC:	Fully Conditioned

HIGHLIGHTS

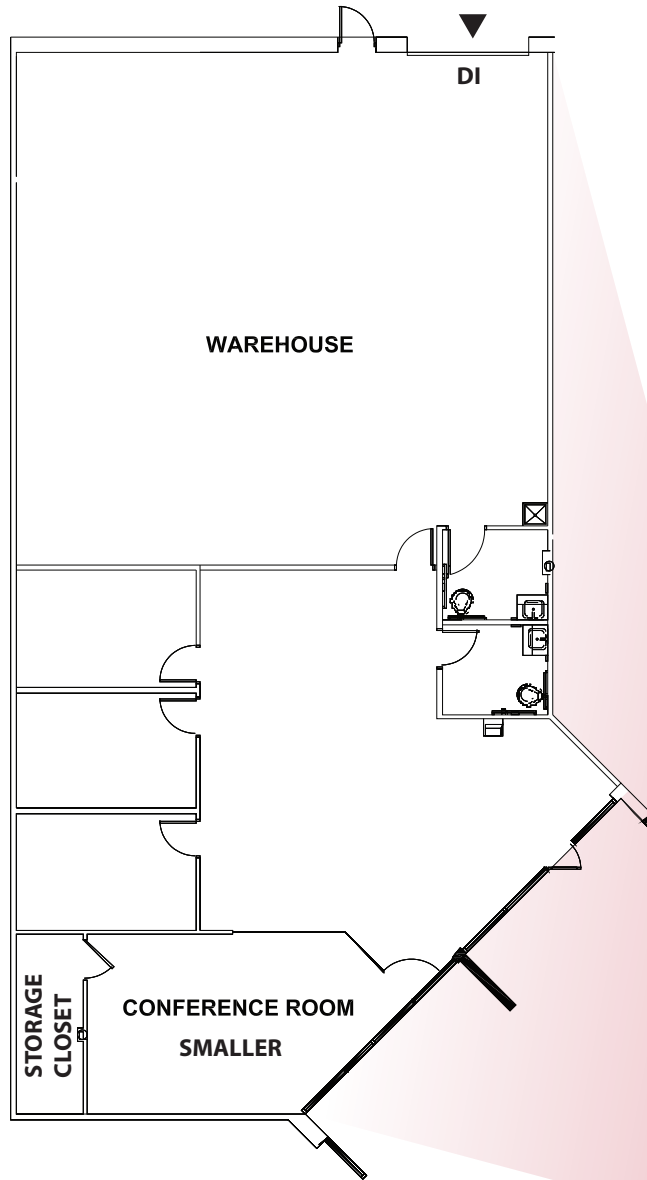
- Iliff Business Park offers excellent individual signage
- Abundant parking and great access to I-25 and I-225
- Located in Unincorporated Arapahoe County
- Aggressive and creative ownership
- Multiple large contiguous options



CODY SHEESLEY
+1 303 309 3520
cody.sheesley@colliers.com

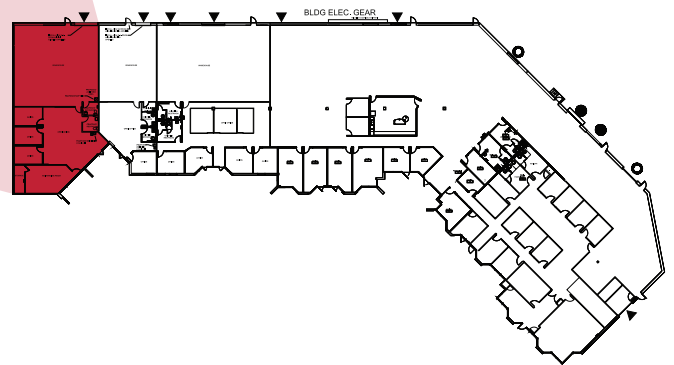
T.J. SMITH, SIOR
+1 303 283 4576
tj.smith@colliers.com





FLOOR PLAN

Suite G
4,074 SF



BROKER DISCLOSURE



COLLIERS DENVER

4643 S. Ulster Street | Suite 1000 | Denver, CO 80237
+1 303 745 5800 fax +1 303 745 5888 | www.colliers.com/denver

No warranty or representation is made as to the accuracy of the foregoing information.
Terms of sale or lease and availability are subject to change or withdrawal without notice.