

FOR SALE

2,058 SF OFFICE CONDO AVAILABLE FOR SALE

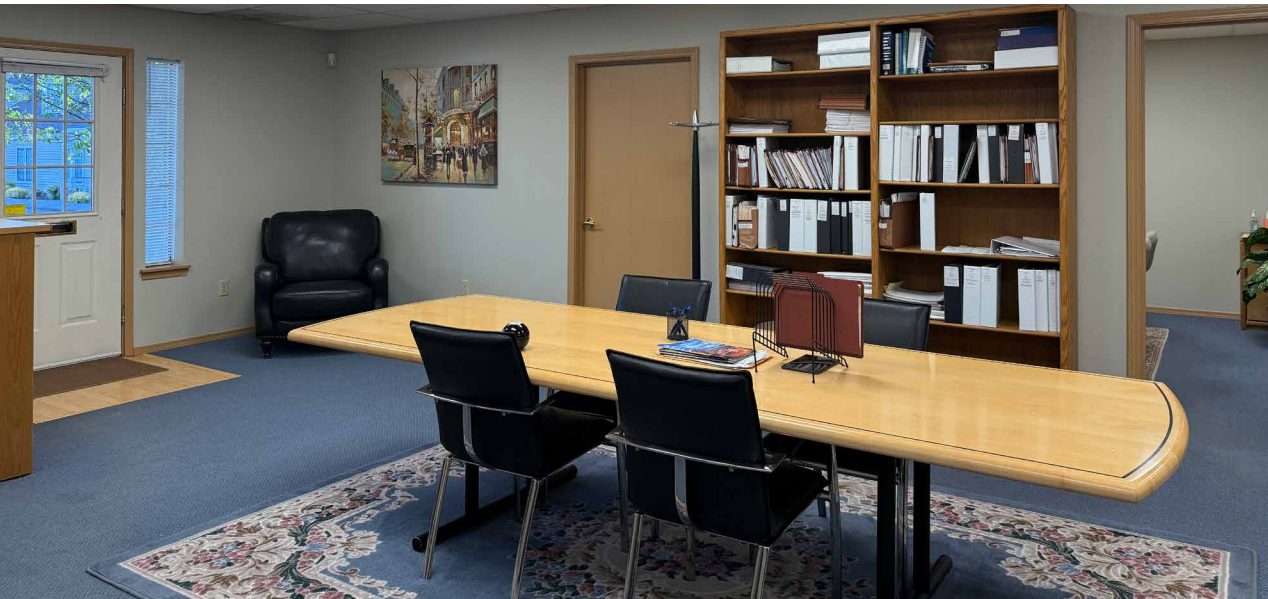
1919 N PEARL ST, SUITE B-3
TACOMA, WA

MERIT
B-2

GREEN & WILMOT,
PLC
ATTORNEYS
B-3

KIDDER.COM

km Kidder
Mathews



Located along predominate Pearl Street - one of Tacoma's largest business districts.

YEAR BUILT	1993
YEAR RENOVATED	2008
TOTAL BUILDING SF	2,058 SF

PARKING

Ample free parking available on-site for staff and visitors. As well as, an additional parking easement on the neighboring lot.

2,058 SF

AVAILABLE

\$650,000

SALE PRICE

1919 N PEARL ST, SUITE B-3

ADDITIONAL
PARKING EASEMENT

 22,265+ VPD

 13,791+ VPD

N 21ST ST

N PEARL ST



AVAILABLE FOR SALE

KIDDER MATHEWS



LOCATED ALONG
PREDOMINATE
PEARL STREET



FLEXIBLE
2-STORY LAYOUT



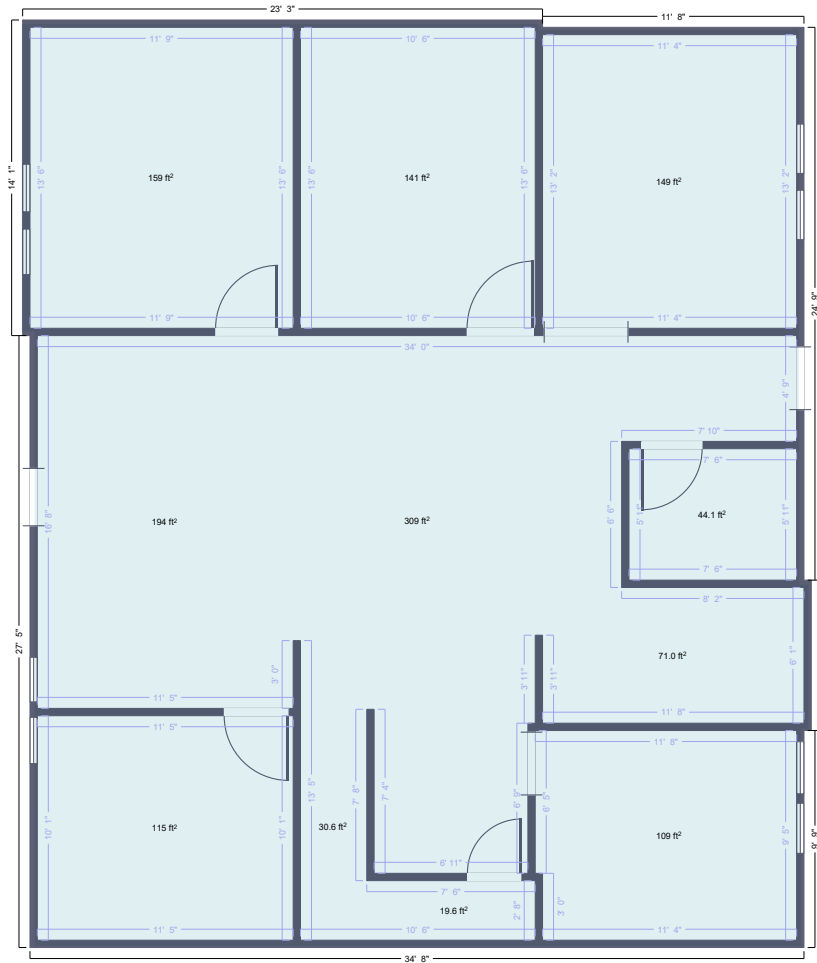
QUICK ACCESS
TO SR - 16



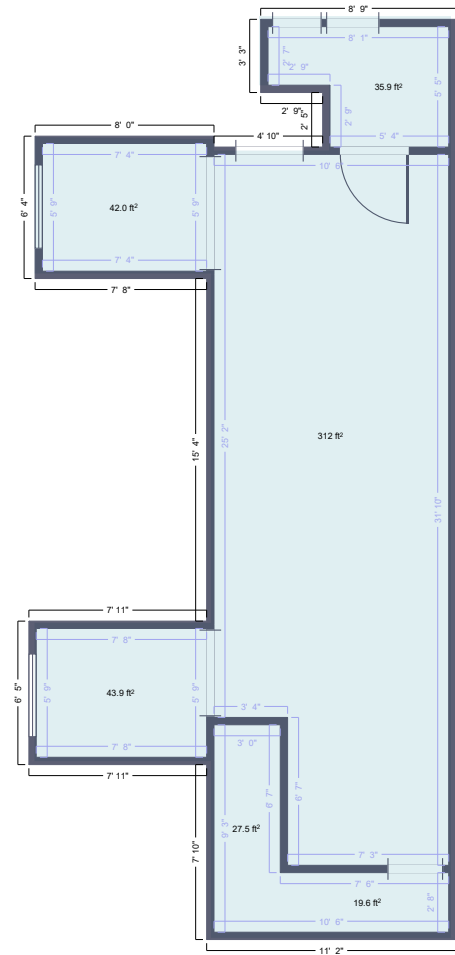
DEDICATED
SUITE ENTRANCE



FLOOR PLAN



FIRST FLOOR



SECOND FLOOR

2,058 SF

AVAILABLE

\$650,000

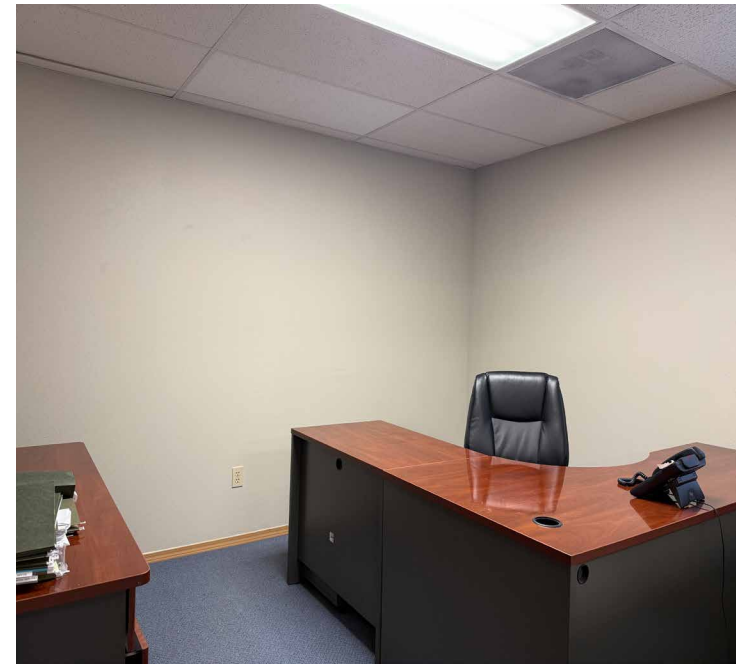
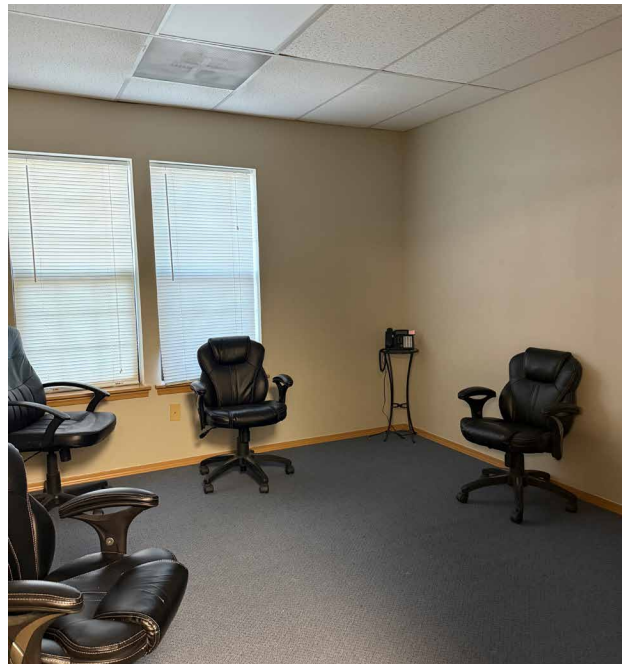
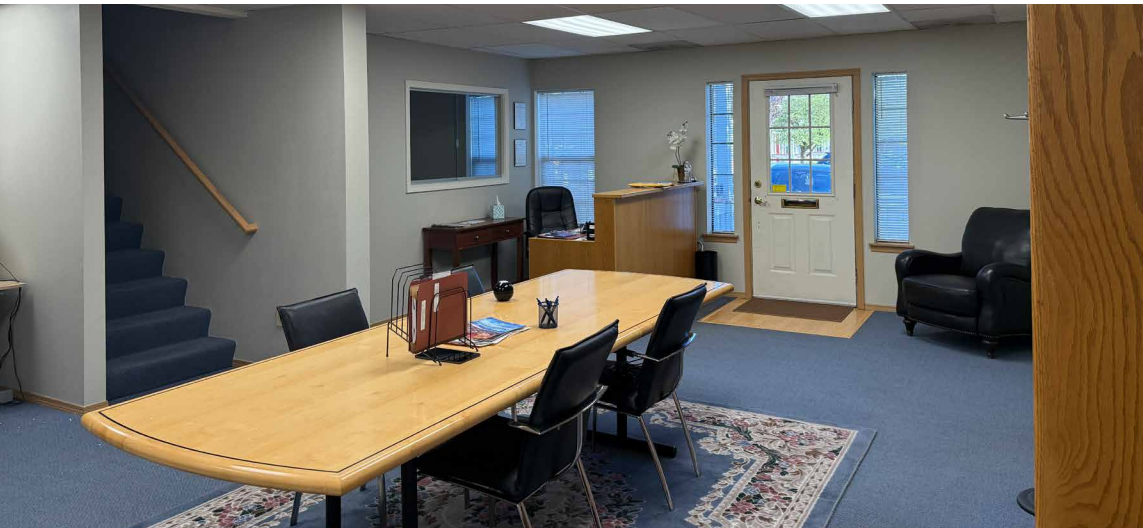
SALE PRICE

NOW

AVAILABLE

Dedicated suite entrance with in-suite restroom and kitchenette for added privacy and convenience.

Flexible layout featuring a private office, open workspace, and second floor for expansion.



HIGHLY- ACCESSIBLE LOCATION

Excellent access to WA-16 and I-5, providing quick routes to Downtown Tacoma and Gig Harbor

Walkable to a variety of retail and dining options along North Pearl Street

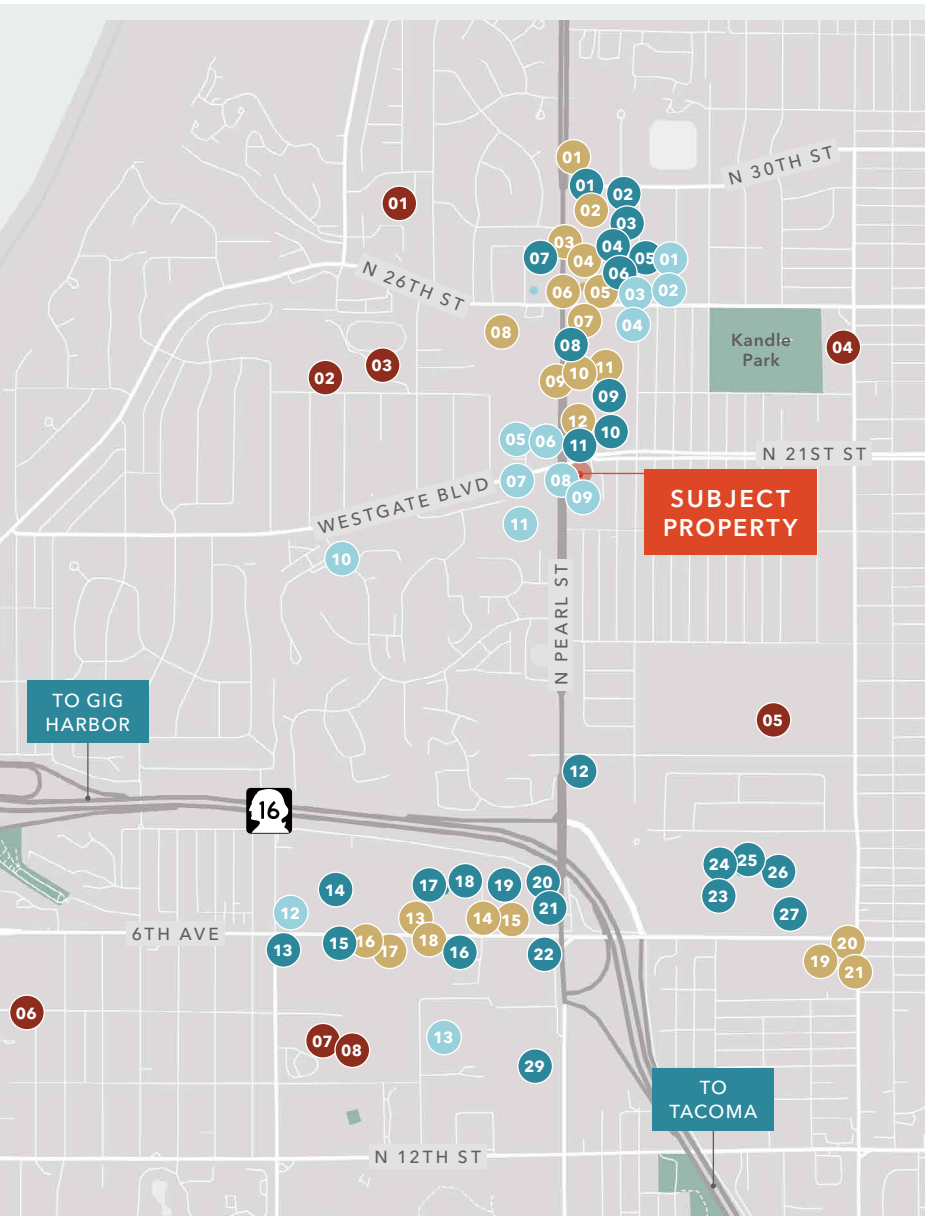
Located within minutes of major destinations including Point Ruston and the UW Tacoma campus

3 MIN
HIGHWAY 16

8 MIN
INTERSTATE 5



NEARBY AMENITIES



RESTAURANTS & BARS

- 01 Diary Queen
- 02 Subway
- 03 Starbucks
- 04 Taco Bell
- 05 Round Table
- 06 Habit Burger Grill
- 07 Taco Del Mar
- 08 Cooper's
- 09 Chipotle
- 10 Starbucks
- 11 Papa Murphy's
- 12 McDonald's
- 13 McDonald's
- 14 Panda Express
- 15 Carl's Jr.
- 16 Popeye's
- 17 Starbucks
- 18 Baskin-Robbins
- 19 Sonic
- 21 Dicky's
- 21 Pizza Hut

LIFESTYLE & FITNESS

- 01 Ace Hardware
- 02 Safeway
- 03 Xfinity Mobile
- 04 Anytime Fitness
- 05 Great Clips
- 06 Chase Bank
- 07 Wells Fargo
- 08 Club Pilates
- 09 Planet Fitness
- 10 Columbia State Bank
- 11 Bank of America
- 12 Discount Tire
- 13 Chase Bank
- 14 Grocery Outlet
- 15 Midas
- 16 O'Rielly
- 17 WinCo Foods
- 18 Dollar Tree
- 19 Pecto
- 20 LA Fitness
- 21 Firestone
- 22 T-Mobile
- 24 Curves for Women
- 25 Crunch
- 26 Harbor Freight Tools
- 27 Sola Salons
- 28 Les Schwab Tires
- 29 YMCA

MEDICAL

- 01 Elite Physical Therapy
- 02 Pearl Chiropractic
- 03 Puget Mental Care
- 04 Olympic Sports & Spine
- 05 Aesthetic Medicine MD
- 06 Advanced Women's Health
- 07 The Medicare Exchange
- 08 Westgate Dental Arts
- 09 Paul Sioda Dental
- 10 Tacoma Massage & bodywork
- 11 Pearl Place Medical
- 12 Touch the Soul Massage Therapy
- 13 Virginia Mason Franciscan Health Rehabilitation Hospital

SCHOOLS

- 01 Arcadia Learning Center
- 02 Tacoma Online High School
- 03 Skyline elementary School
- 04 Downing Elementary School
- 05 Dr. Dolores Silas High School
- 06 Geiger Montessori School
- 07 Tacoma Waldorf School
- 08 Hunt Middle School

DEMOGRAPHICS

POPULATION

	1 Mile	3 Miles	5 Miles
2025 ESTIMATED	15,875	96,375	203,938
2030 PROJECTION	15,665	97,427	208,838
2020 CENSUS	16,055	97,202	193,082
PROJECTED GROWTH 2025 - 2030	-0.3%	0.2%	0.5%

MEDIAN AGE & GENDER

	1 Mile	3 Miles	5 Miles
MEDIAN AGE	43.7	40.0	38.9
% FEMALE	52.3%	50.4%	49.6%
% MALE	47.7%	49.6%	50.4%

HOUSEHOLDS

	1 Mile	3 Miles	5 Miles
2025 ESTIMATED	7,428	42,924	86,885
2030 PROJECTED	7,418	43,920	90,826
2020 CENSUS	7,549	42,165	81,318
GROWTH 2025 - 2030	0.0%	0.5%	0.9%
OWNER-OCCUPIED	53.5%	53.6%	48.5%
RENTER-OCCUPIED	46.5%	46.4%	51.5%

INCOME

	1 Mile	3 Miles	5 Miles
2025 ESTIMATED INCOME	\$130,167	\$135,985	\$127,222
2030 PROJECTED HH INCOME	\$130,345	\$136,179	\$126,079
ANNUAL CHANGE 2025 - 2030	0.00%	0.00%	-0.2%

EMPLOYMENT

	1 Mile	3 Miles	5 Miles
TOTAL BUSINESSES	639	4,514	11,108
TOTAL EMPLOYEES	4,314	34,446	87,334
WHITE COLLAR WORKERS	4,795	34,769	68,246
BLUE COLLAR WORKERS	2,953	16,199	34,950

EDUCATION

	1 Mile	3 Miles	5 Miles
SOME HIGH SCHOOL	3.4%	3.1%	4.3%
HIGH SCHOOL DIPLOMA	21.4%	21.1%	22.7%
SOME COLLEGE	23.1%	20.2%	21.2%
ASSOCIATE	10.7%	8.7%	9.6%
BACHELOR'S	23.8%	26.8%	23.7%
GRADUATE	15.7%	18.8%	16.7%

Data Source: ©2023, Sites USA

1919 N PEARL,
SUITE B-3

GREEN & WILMOT,
PLLC
ATTORNEYS
B-3

Exclusively listed by

BRUCE BARKER, MBA, CCIM

Vice President

253.341.0765

bruce.barker@kidder.com

KIDDER.COM

This information supplied herein is from sources we deem reliable. It is provided without any representation, warranty, or guarantee, expressed or implied as to its accuracy. Prospective Buyer or Tenant should conduct an independent investigation and verification of all matters deemed to be material, including, but not limited to, statements of income and expenses. Consult your attorney, accountant, or other professional advisor. All Kidder Mathews designs are the sole property of Kidder Mathews. Branded materials and layouts are not authorized for use by any other firm or person.

km Kidder
Mathews