

FOR SALE

# VISALIA PAD SITE

*Lot 11, 1.09 Acres, at Oaks  
Marketplace Shopping Center*

NW CORNER OF S MOONEY BLVD. &  
W MIDVALLEY AVE, VISALIA, CA



**SUBJECT  
PROPERTY**

OAKS MARKETPLACE  
UNDER DEVELOPMENT

S MOONEY BLVD

W MIDVALLEY AVE

# 1.09 ACRE PARCEL OF LAND LOCATED IN VISALIA, CA

This build-ready 1.09 acre parcel of land is located in Phase II of the new Oaks Marketplace Shopping Center, a dense commercial/retail node, with excellent access, exposure and regional transportation linkages. The parcel provides abundant room for efficient drive-thru stacking lanes and ample parking spaces. This allows for smooth traffic flow through the drive-thru, reducing wait times and enhancing customer satisfaction. Furthermore, the spacious layout accommodates the construction of a well-sized restaurant, providing the flexibility to design a comfortable and inviting dining area for patrons who prefer to dine in.

**\$1.4M**

ASKING PRICE

**1.09 AC**

SITE SIZE

ADDRESS	NW Corner of S Mooney Blvd & W Midvalley Ave, Visalia, CA
COUNTY	Tulare
PARCEL NO.	122-350-032
SITE SIZE	1.09 AC
SHAPE	Rectangular
FLOOD ZONE	X02 (Not in flood zone)
ZONING	C-R (Regional Commercial)
AVAILABLE	Ground lease or build-to-suit



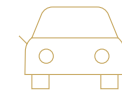
*Major National  
Retail Corridor*



*Major Employment/Retail  
Hub In Central Valley*

Situated on a corner, the site has visibility from multiple directions, increasing brand exposure and foot traffic. Visalia and Mooney Boulevard has been the subject of very recent expansion. New tenants found in major markets have planted their flag in this market which include Sprouts, Nordstrom Rack, Dave's Hot Chicken, Dutch Brothers, Texas Roadhouse, and many others.

Visalia is centrally located in between the major markets of Los Angeles and San Francisco. Agriculture is still a major sector in Visalia, but businesses, tenants, and retailers such as Amazon have realized its prime location as a logistical/ industrial hub and have heavily invested into the area. Housing and retail developments have continuously grown the city in every direction. More retail/restaurant tenant expansions in the area have solidified Visalia as a sustainable retail market.



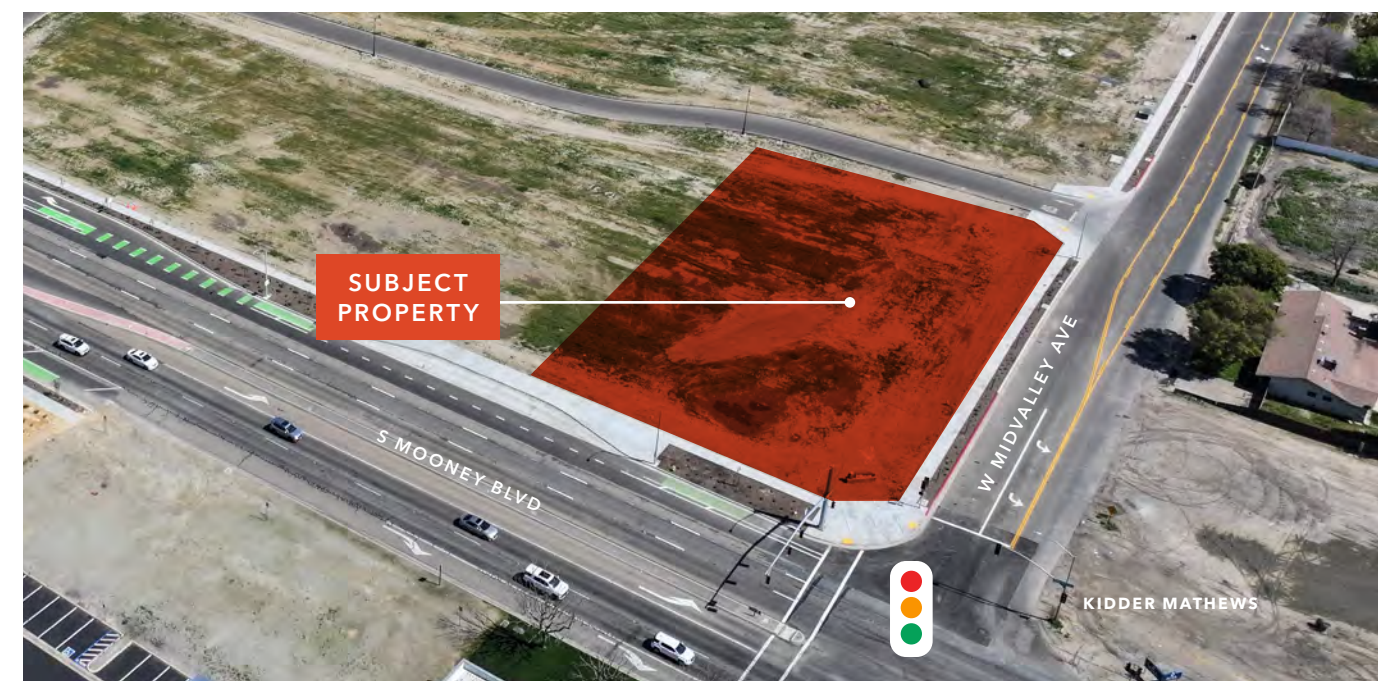
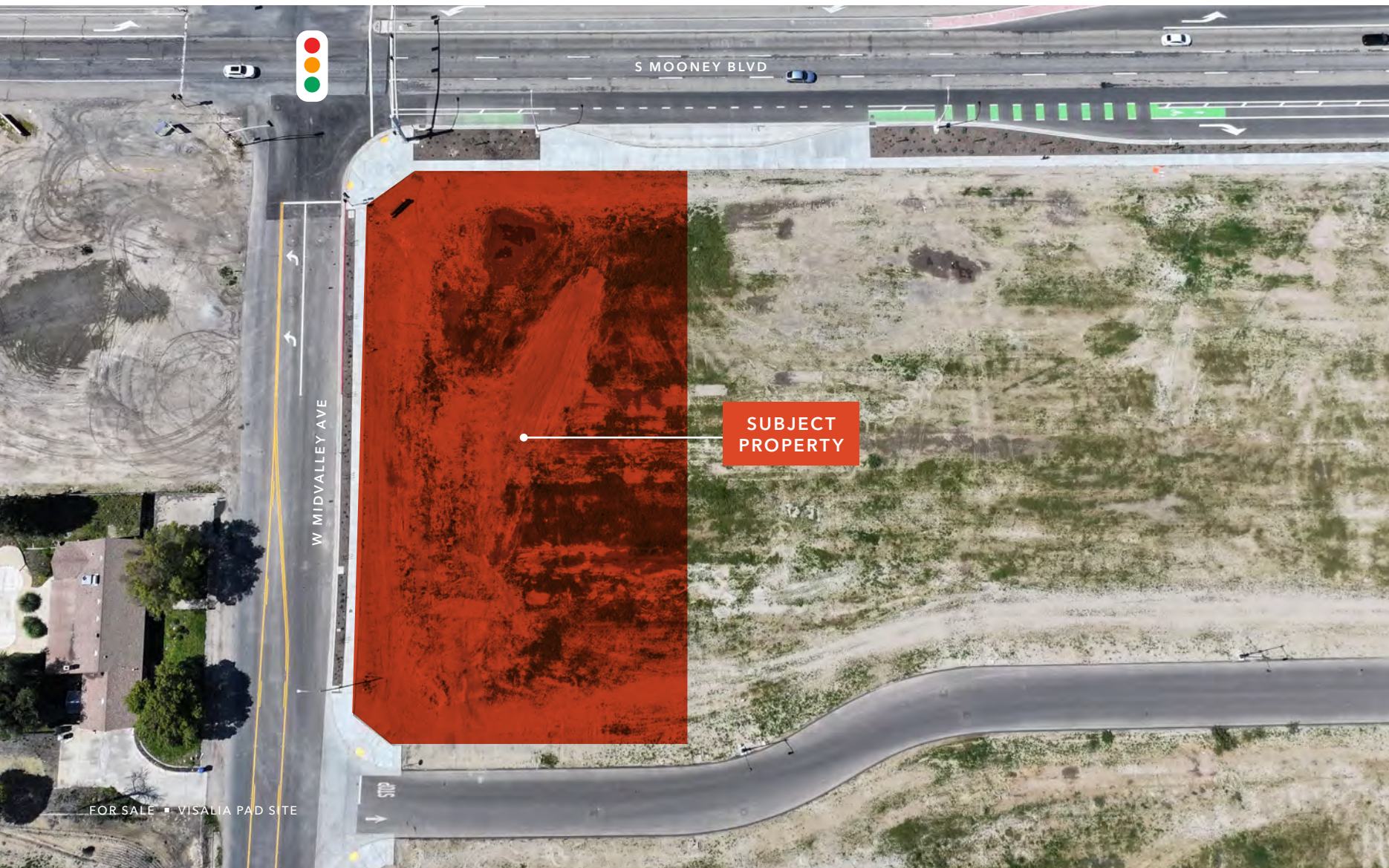
*Drive-Thru Potential*



*Traffic Flow*

With zoning allowing for drive-thru facilities, the site offers an additional revenue stream for the tenant, catering to customers seeking quick and convenient service.

Positioned at a signalized corner typically means a higher traffic flow, expanding the potential customer base for the tenant.



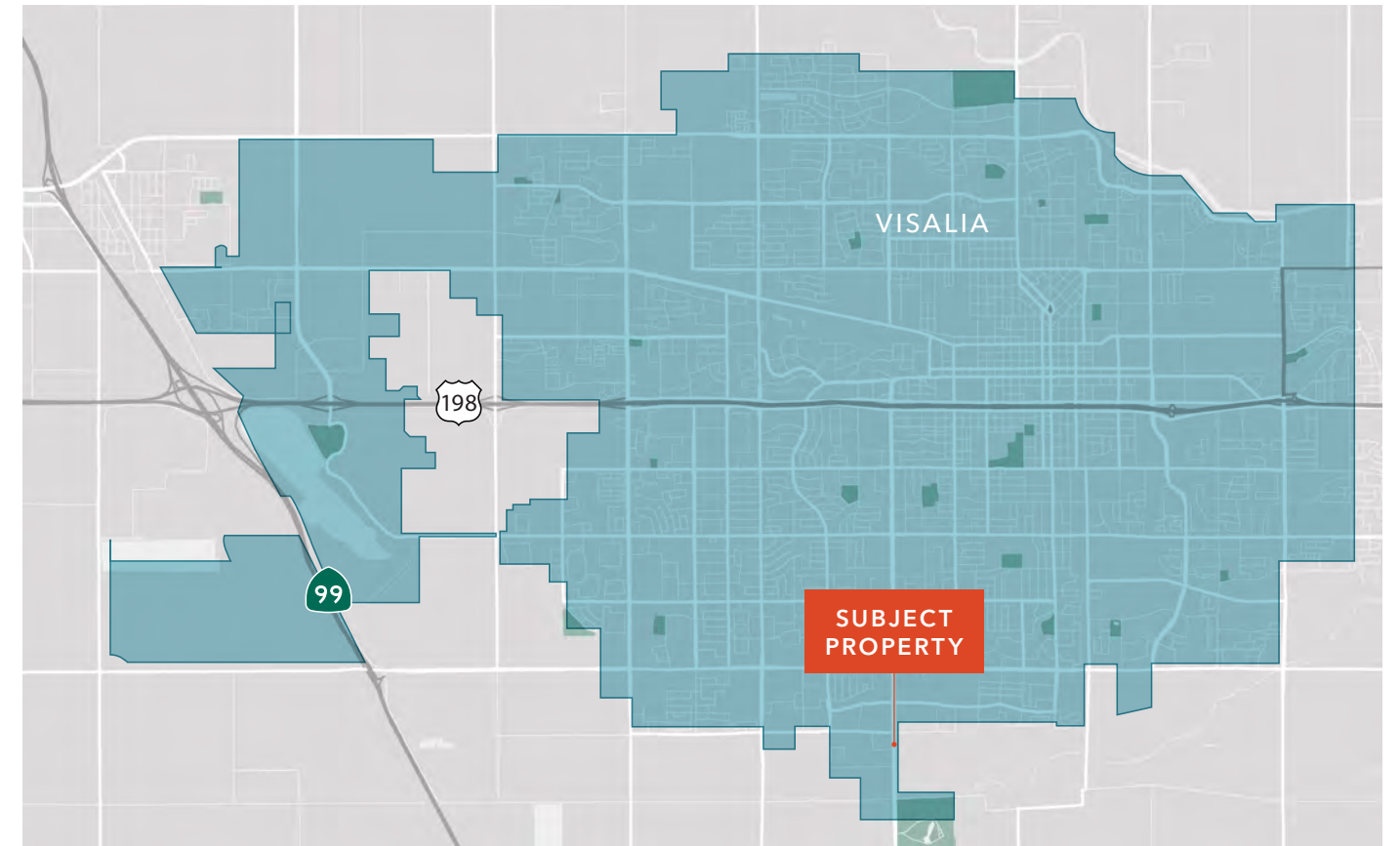
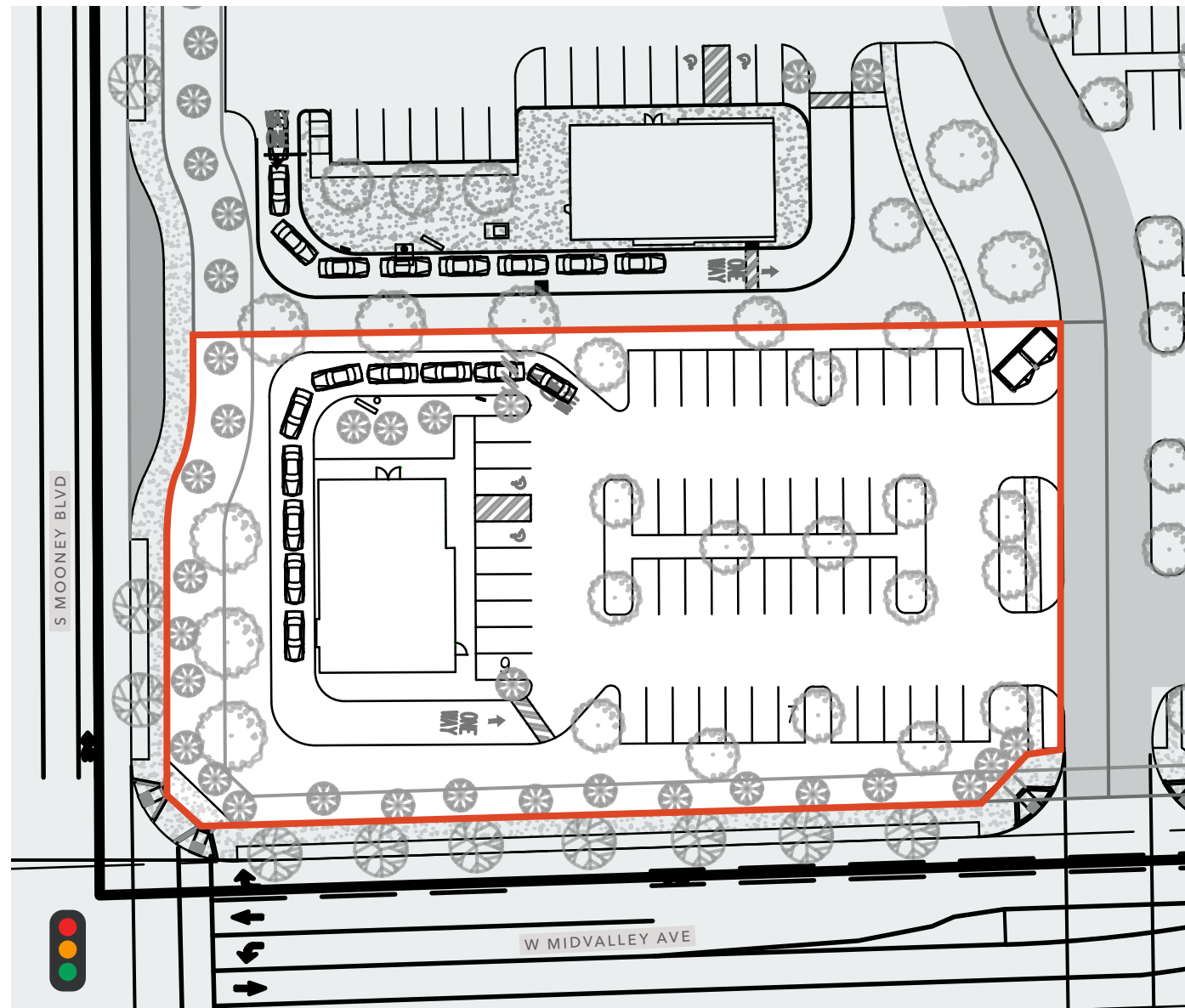


# C-R REGIONAL COMMERCIAL ZONE

## USES PERMITTED

The purpose and intent of the regional commercial zone district is to provide areas for retail establishments that are designed to serve a regional service trade area. The uses permitted in this district are to be of a large-scale regional retail nature with supporting goods and services. Uses that are designed to provide service to residential areas and convenience, neighborhood and community level retail are not permitted, while office uses are to be limited. Some examples of uses allowed outright in this zone include:

- Banks & Financial Institutions
- Day Spas
- Daycares
- Eating & Drinking Establishments
- Drugstore/Pharmacy
- Specialty Food Stores



# LOCATION OVERVIEW

## VISALIA, CA

Visalia is a city in Central California located in the San Joaquin Valley. It is 190 miles North of Los Angeles, 230 Miles South of San Francisco, 45 miles South of Fresno, & 35 miles west of Sequoia National Park. Known as the "Gateway to the Sequoia & Kings Canyon National Parks", it is a diverse city with a growing population of around 143K people & a trade area of over 630k. Key factors contributing to its growth include its ties to agriculture, economic development efforts, & a growing housing market. Major employers in Visalia include healthcare providers like Kaweah Delta, government offices, educational institutions like College of the Sequoias, & businesses in the agriculture, industrial, & retail sectors.

Because of its central location, the importance of Visalia as a logistical hub off the major 99 freeway has grown within recent years. Visalia's location makes it possible to efficiently reach 99% of CA - plus portions of AZ, OR, & NV - overnight. The city's goal to actively pursue economic development projects to attract new businesses & industries to the region has contributed to job growth & a burgeoning local economy.

As one of the largest & fastest growing cities in the San Joaquin Valley, Visalia is a hub for the major trade area that expands to surrounding cities such as Exeter, Tulare, & Hanford.



### POPULATION

	1 Mile	3 Miles	5 Miles
2025 TOTAL	5,196	62,021	156,858
2030 PROJECTION	5,379	61,961	157,957
2020 CENSUS	4,693	60,187	152,621
PROJECTED GROWTH 2025 - 2030	183 (0.7%)	-60	1,099 (0.1%)

### HOUSEHOLDS

	1 Mile	3 Miles	5 Miles
2025 TOTAL	1,896	22,137	52,505
2030 PROJECTED	2,031	22,835	54,539
2020 CENSUS	1,716	21,614	50,566
GROWTH 2025 - 2030	134 (1.4%)	689 (0.6%)	2,033 (0.8%)

### AVERAGE HOUSEHOLD INCOME

	1 Mile	3 Miles	5 Miles
TOTAL HOUSE HOLD INCOME 2025	\$90,604	\$108,099	\$109,319
2030 PROJECTED HOUSE HOLD INCOME	\$90,367	\$107,978	\$109,399
2010 CENSUS	\$58,271	\$63,585	\$66,173
PROJECTED GROWTH 2025 - 2030	-\$237	-\$120	\$80
HISTORICAL ANNUAL CHANGE (2000-2025)	\$40,431 (3.2%)	\$52,961 (3.8%)	\$55,205 (4.1%)

# VISALIA PAD SITE



SUBJECT  
PROPERTY

*For more  
information contact*

**PATRICK YLAGAN**  
310.906.3279  
patrick.ylagan@kidder.com  
CA LIC N° 02024663

**KEN MCLEOD**  
310.906.3274  
ken.mcleod@kidder.com  
CA LIC N° 01181838

*Co-brokering with  
Kidder Mathews of California, Inc.*

**RYAN O'LEARY**  
503.221.2294  
ryan.oleary@kidder.com  
OR LIC N° 200804103

**REBECCA O'LEARY, CCIM**  
503.221.2279  
rebecca.oleary@kidder.com  
OR LIC N° 201211819

This information supplied herein is from sources we deem reliable. It is provided without any representation, warranty, or guarantee, expressed or implied as to its accuracy. Prospective Buyer or Tenant should conduct an independent investigation and verification of all matters deemed to be material, including, but not limited to, statements of income and expenses. Consult your attorney, accountant, or other professional advisor.

