

1560

FLATBUSH AVENUE

CORNER OF FLATBUSH AVENUE & HILLEL PLACE
FLATBUSH JUNCTION | BROOKLYN



1560

FLATBUSH AVENUE

CORNER OF FLATBUSH AVENUE & HILLEL PLACE
FLATBUSH JUNCTION | BROOKLYN

PROPERTY HIGHLIGHTS:

- Prime Junction location - Amazing brand potential
- Highly visible frontage
- High foot & vehicle traffic area
- Phenominal branding opportunity with flag signage
- Steps away from the Flatbush Avenue station and Brooklyn College
- Neighboring tenants include: *McDonald's, Starbucks, Pizza Hut, Northfield Bank, Subway, Citizen Bank, Foot Locker, Dunkin', Bank of America, Target, Webster Bank, and more!*

SIZE: 1,600 SF Ground Floor

FRONTAGE: 25'

CEILING HEIGHT: 12'

POSSESSION: November 1, 2026

ASKING RENT: Upon Request

TRANSPORTATION: 



Brooklyn College
The City University of New York

1560
FLATBUSH AVENUE

TRIANGLE JUNCTION SHOPPING MALL
Starbucks
Applebee's
HomeGoods
ALDI
at&t
TARGET

CHIPOTLE
McDonald's
blink
POPEYE'S LOUISIANA KITCHEN

GONG CHA
BANK OF AMERICA
theVitamin Shoppe

2 5
FIVE GUYS BURGERS and FRIES Portabella
SUBWAY
Chick-fil-A COMING SOON

CHASE

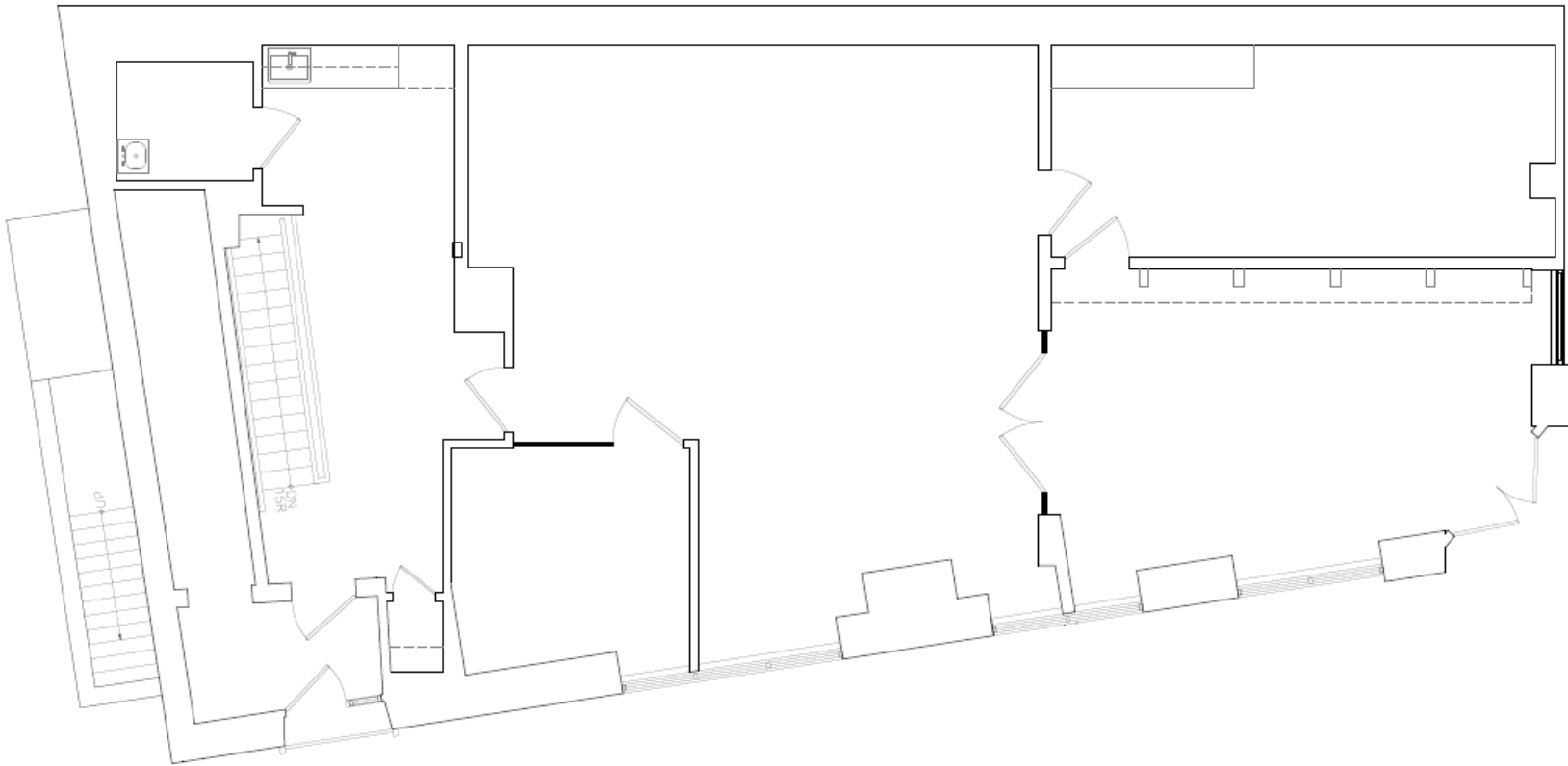
TD
UPS

1560

FLATBUSH AVENUE

CORNER OF FLATBUSH AVENUE & HILLEL PLACE
FLATBUSH JUNCTION | BROOKLYN

FIRST FLOOR



1560

FLATBUSH AVENUE

CORNER OF FLATBUSH AVENUE & HILLEL PLACE
FLATBUSH JUNCTION | BROOKLYN

FOR MORE INFORMATION,
PLEASE CONTACT:

ALLIE DWECK

646.483.2273 | ADweck@ksrny.com

SOLOMON SHARABY

718.986.7149 | SSharaby@ksrny.com

ALBERT MANOPLA

646.944.0797 | AManopla@ksrny.com

