

FOR SALE

1105 St. Peters Howell Rd, St. Peters, MO 63376



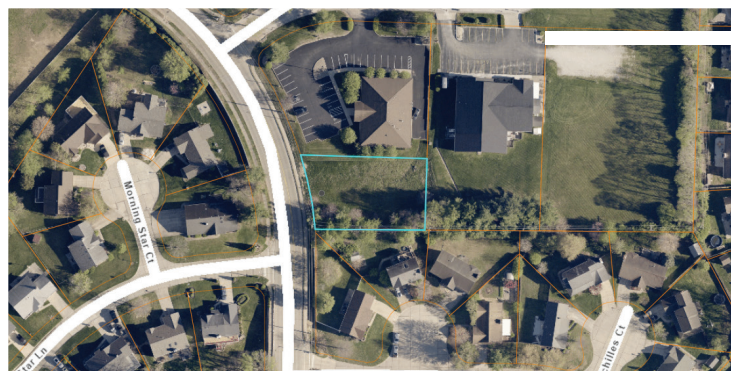
PROPERTY SUMMARY

C2 LAND


- 0.36 ac Lot
- C2 Zoning
- On major street with easy access to Mid Rivers Mall Dr
- Located in Medicorp Plaza, ideal for small office building
- **SALE PRICE: \$79,000.00**

Directions

I-70 to South on Mid Rivers Dr
MO-364 to N on Mid Rivers Dr then
East on St. Peters Howell Rd.



 Listing Agent **Danny Kluesner**

 Cell **314-712-0055**

 **kluesner@shockleycommercial.com**



501 First Capital Dr. Suite 5,
St. Charles MO 63301

 Office **636-946-9753**

 **www.shockleycommercial.com**