

# FOR LEASE

## CENTERPOINTE

19712 MacArthur Boulevard • Irvine, California

### ±979 - ±2,889 SF OFFICE SUITE AVAILABLE



#### PROPERTY FEATURES:

- Located in prestigious Centerpointe office project at the corner of MacArthur and Jamboree - "Main & Main" location
- Excellent access to the 405, 73 and 55 Freeways, restaurants and the Equinox health club next door
- Minutes from Orange County Airport, Newport Center and University of California Irvine
- Free 4:1000 surface parking

#### AVAILABILITY:

- » Suite 120: 2,889 SF - \$2.65 SF  
6 private offices, conference room, reception area, break room
- » Suite 225: 979 SF - \$2.75 SF  
2 private offices, conference room, reception area

Exclusively listed by:

**BRIAN GARBUTT**

SVP/Principal

License ID# 01215482

949.724.4721

[bgarbutt@lee-associates.com](mailto:bgarbutt@lee-associates.com)



**GARBUTT**  
VALUE-ADD PROPERTY GROUP  
OFFICE • INDUSTRIAL • RETAIL  
"Maximizing Property Values"™

**LEE & ASSOCIATES**  
COMMERCIAL REAL ESTATE SERVICES  
NEWPORT BEACH

DISCLAIMER: The information contained herein has been obtained from the property owner or other third party and is provided to you without verification as to accuracy. We (Lee & Associates, its brokers, employees, agents, principals, officers, directors and affiliates) make no warranty or representation regarding the information, property, or transaction. You and your attorneys, advisors and consultants should conduct your own investigation of the property and transaction.

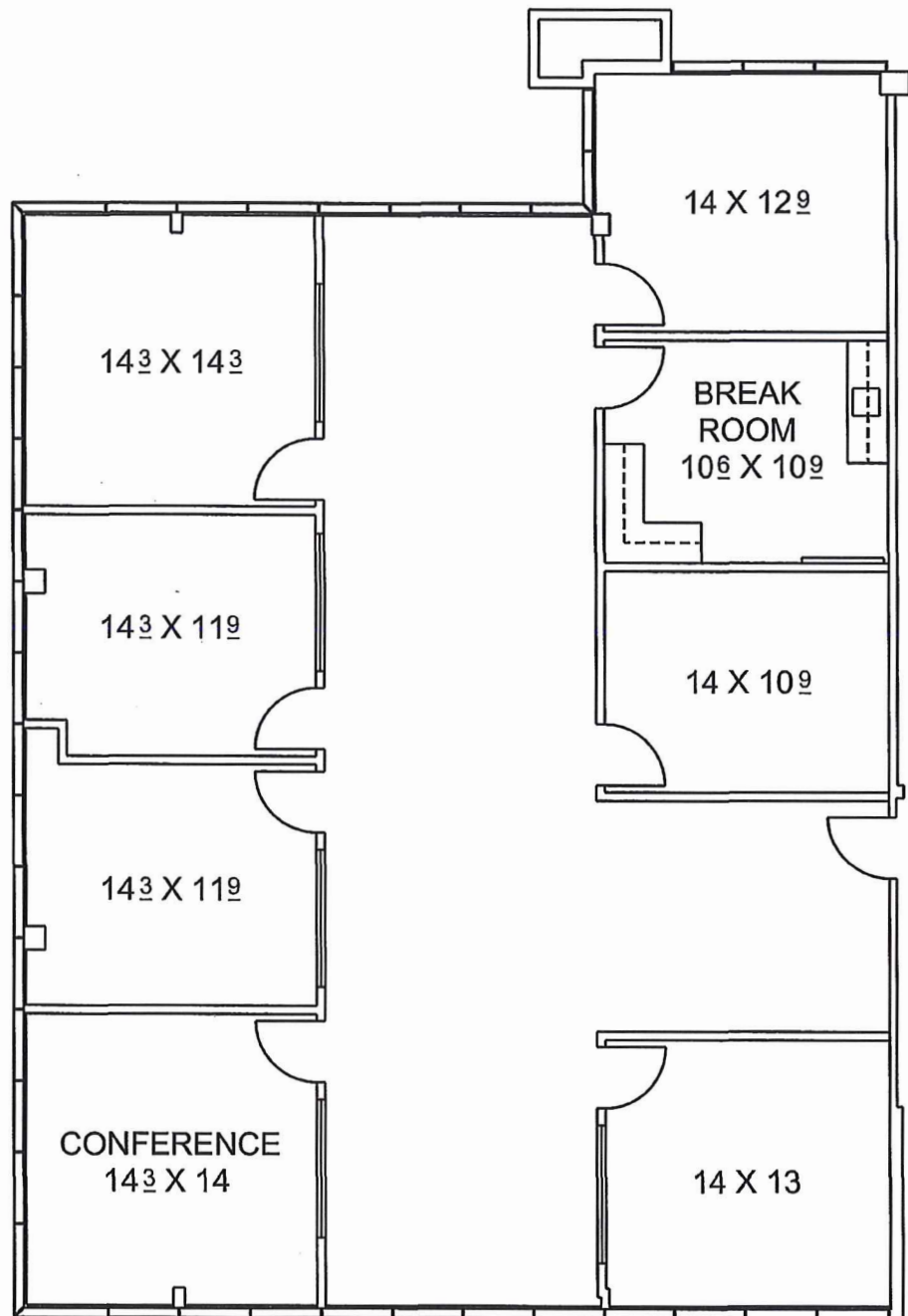
# FOR LEASE

## CENTERPONTE

19712 MacArthur Boulevard • Irvine, California



### SUITE 120 - ±2,889 SF



Exclusively listed by:

**BRIAN GARBUTT**

SVP/Principal

License ID# 01215482

949.724.4721

[bgarbutt@lee-associates.com](mailto:bgarbutt@lee-associates.com)



**GARBUTT**  
VALUE-ADD PROPERTY GROUP  
OFFICE • INDUSTRIAL • RETAIL

"Maximizing Property Values"™



**LEE &  
ASSOCIATES**

COMMERCIAL REAL ESTATE SERVICES  
NEWPORT BEACH

DISCLAIMER: The information contained herein has been obtained from the property owner or other third party and is provided to you without verification as to accuracy. We (Lee & Associates, its brokers, employees, agents, principals, officers, directors and affiliates) make no warranty or representation regarding the information, property, or transaction. You and your attorneys, advisors and consultants should conduct your own investigation of the property and transaction.

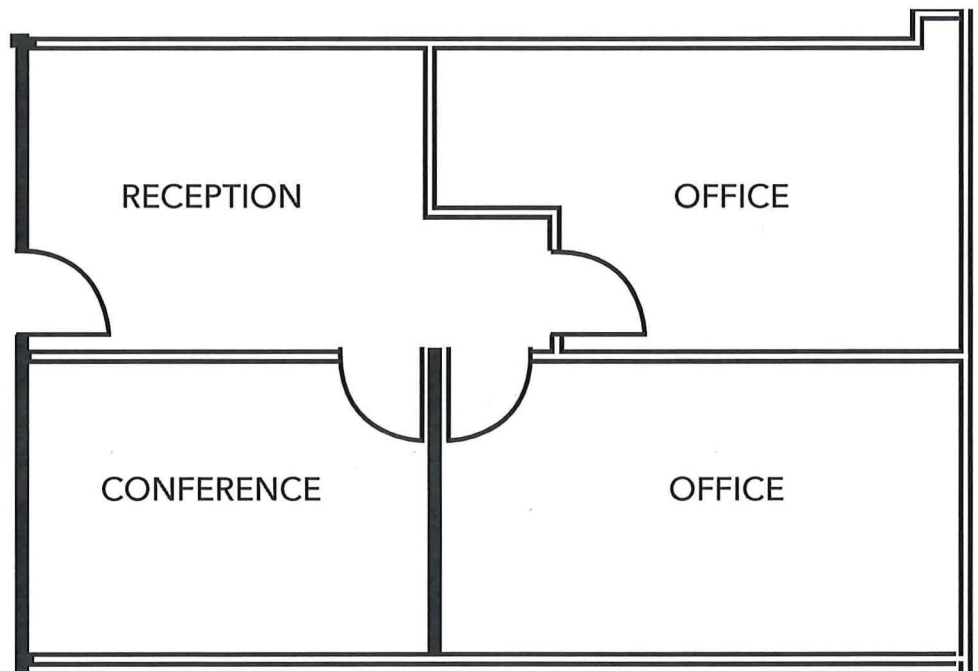
# FOR LEASE

## CENTERPOINTE

19712 MacArthur Blvd., Suite 225 • Irvine, California



### SUITE 225 - ±979 SF



Exclusively listed by:

**BRIAN GARBUTT**

SVP/Principal

License ID# 01215482

949.724.4721

[bgarbutt@lee-associates.com](mailto:bgarbutt@lee-associates.com)



**GARBUTT**

VALUE-ADD PROPERTY GROUP  
OFFICE • INDUSTRIAL • RETAIL

"Maximizing Property Values"™



**LEE &  
ASSOCIATES**

COMMERCIAL REAL ESTATE SERVICES  
NEWPORT BEACH

DISCLAIMER: The information contained herein has been obtained from the property owner or other third party and is provided to you without verification as to accuracy. We (Lee & Associates, its brokers, employees, agents, principals, officers, directors and affiliates) make no warranty or representation regarding the information, property, or transaction. You and your attorneys, advisors and consultants should conduct your own investigation of the property and transaction.



**GARBUTT**  
VALUE-ADD GROUP  
OFFICE • INDUSTRIAL • RETAIL

"Maximizing Property Values"™