



GRAHAM & ASSOCIATES

STANDALONE COMMERCIAL BUILDING FOR SALE

VISALIA, CA

OFFERING MEMORANDUM



LISTED BY

Matthew D. Graham

DRE #01998518

O | 559.754.3020

F | 559.429.4016

GRAHAM
&
ASSOCIATES

COMMERCIAL • AGRICULTURE • ESTATES

CONTENTS

- 3 **Executive Summary**
- 4 **Market Aerial**
- 5 **Drone Aerial**
- 6 **Site Plan**
- 7 **Market Overview**
- 8 **Area Map & Demographics**

The information contained herein has been obtained from sources believed to be reliable, but has not been verified for accuracy. All information is presented "as-is" without representation or warranty of any kind. You are advised to independently verify the accuracy of all summaries and information contained herein. Any reliance on the content of this memorandum offering is solely at your own risk.

125 S Bridge St | Visalia, CA 93291

EXECUTIVE SUMMARY

Investment Highlights

- » **List Price:**
\$2,300,000
- » **APN:**
094-296-017-000
- » **Building Size:**
±7,540 Sq. Ft.
- » **Lot Size:**
±0.18 Acres



125 S Bridge St | Visalia, CA 93291

RENT ROLL							
Address	Suite	Lease Type	Comencement	Expiration	Square Footage	Base Rent	PSF/Mo
125 S. Bridge St.	100	NNN	2/15/24	2/27/28	2,663 +/-	\$3,997.00	\$1.50
125 S. Bridge St.	150	NNN	1/1/24	12/31/26	4,961 +/-	\$6,945.00	\$1.60



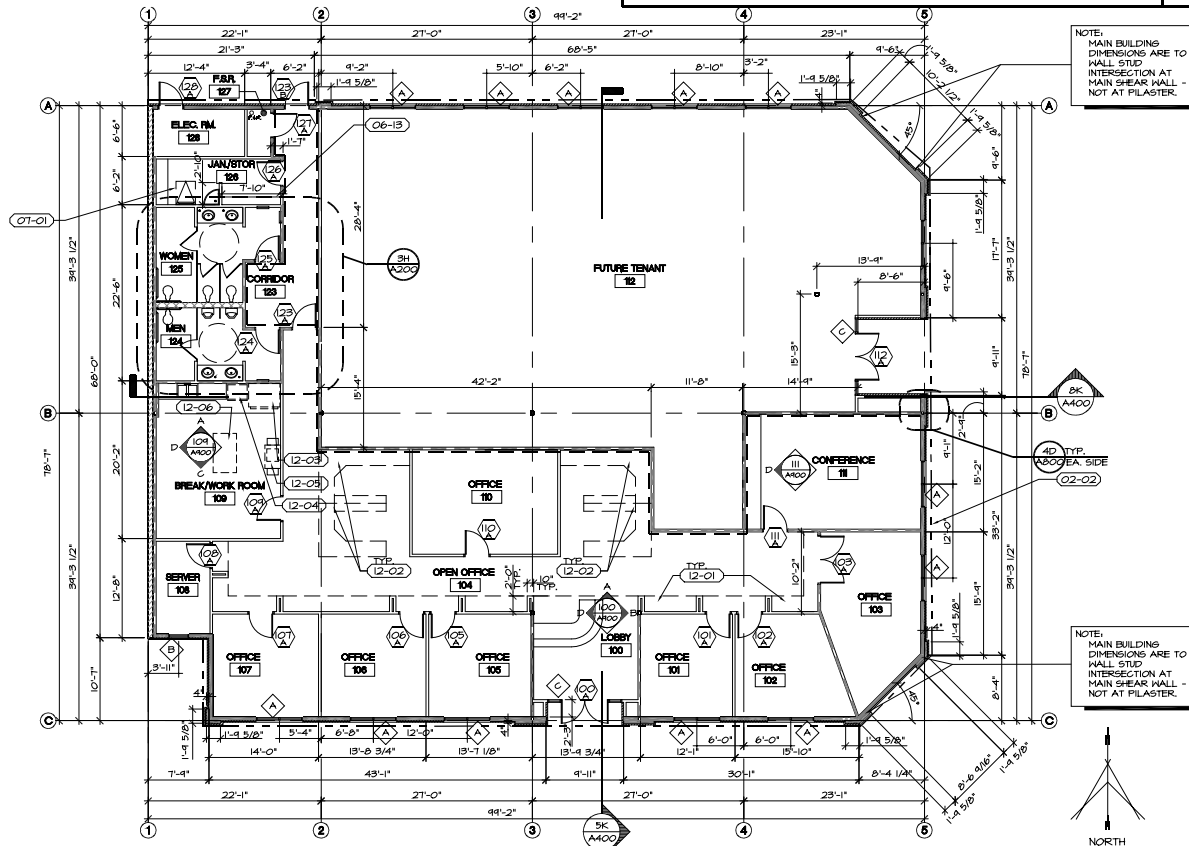
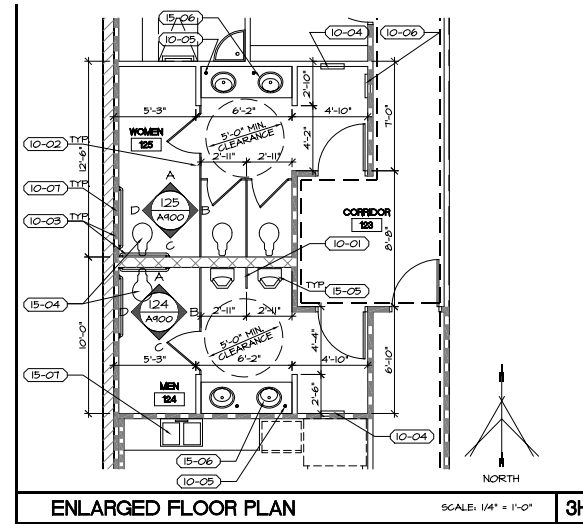
MARKET AERIAL



CLOSEUP AERIAL



FLOOR PLAN



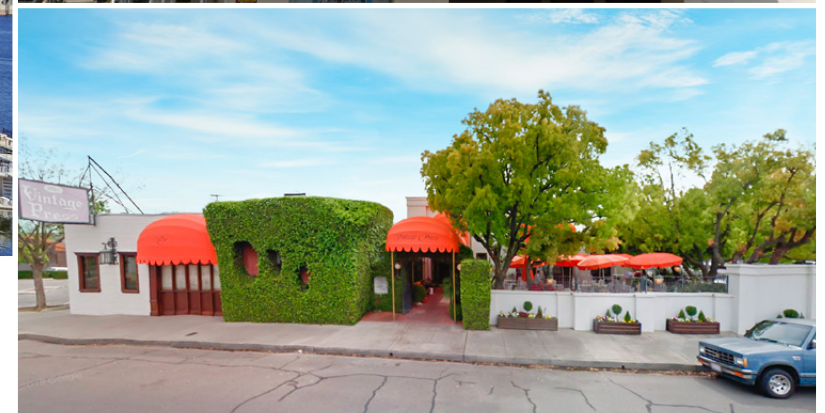
MARKET OVERVIEW

Visalia is a city of 136,000 people located in the San Joaquin Valley of Central California, equidistant from the Ports of Los Angeles/Long Beach and Oakland. It is home to one of the finest downtown areas between Stockton and Bakersfield with a variety of restaurants, shops, boutiques, entertainment and event centers, many professional office tenants as well as the area's largest hospital Kaweah Delta Healthcare District. Visalia is also the County Seat for Tulare County, which is reflective of its position as the economic and cultural hub of the county.

As the regional hub of the greater Tulare/Kings County region, Visalia has seen a robust and growing economy. It is part of Tulare County, which is the more populated of the two, with 442,179 people and a median age of just 28.5 years old - one of the youngest regional populations in California. Tulare County is also within an Enterprise Zone which offers a number of economically-favorable incentives such as 21-Day permit fast-tracking, 5-year, no interest, development fee deferral, state tax credits for hiring and purchasing qualified equipment, accelerated expense deductions, net interest deduction and preference points on state contracts.



- image Clockwise from top:*
1. Fox Theatre (± 0.7 miles from subject)
 2. Vintage Press Restaurant (± 0.7 miles from subject)
 3. Lake Kaweah Marina (± 20 miles from subject)



AREA MAP & DEMOGRAPHICS





GRAHAM
&
ASSOCIATES
COMMERCIAL • AGRICULTURE • ESTATES

Matthew D. Graham
DRE 01998518
O | 559.754.3020
F | 559.429.4016