



Corner Lot Center

1000 Riverside Avenue
Jacksonville, Florida 32204

Spaces	Lease Rate	Space Size
210	\$26.00 SF/yr	729 SF
250	\$26.00 SF/yr	446 SF
311	\$750 per month	275 SF
350	\$26.00 SF/yr	3,626 SF
600	Negotiable	9,176 SF

Property Highlights

- 9-story professional office building in the heart of historic Riverside and the 5 points district with easy access to I-95 & 10.
- Incredible views of the beautiful St. Johns River.
- Upscale building finishes and ample parking.
- Within walking distance to the best restaurants, shops, & parks.
- Located near grocery stores, medical offices, and hospitals.
- Cummer Museum and Garden Club is just across the street.
- Home of River and Post restaurant and roof top bar.

For More Information



Patrick Carney

Vice President, Office Specialist
O: 904 404 4456
pc@naihallmark.com



Sydney Miles

Associate
O: 904 404 5566
sm@naihallmark.com







Floor Plan: 23 offices, 3 conference rooms, 1 training room, 1 kitchen, 4 cubicles



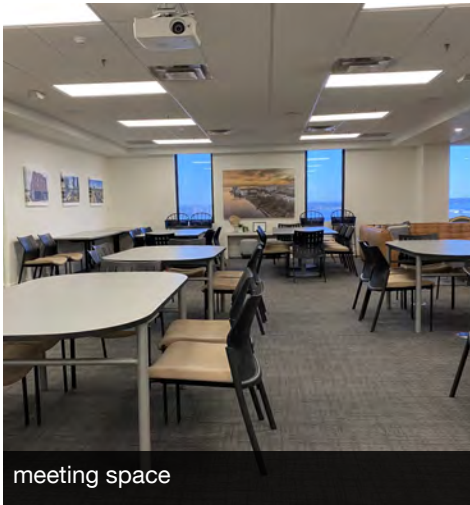
River Views



Suite 600 entrance



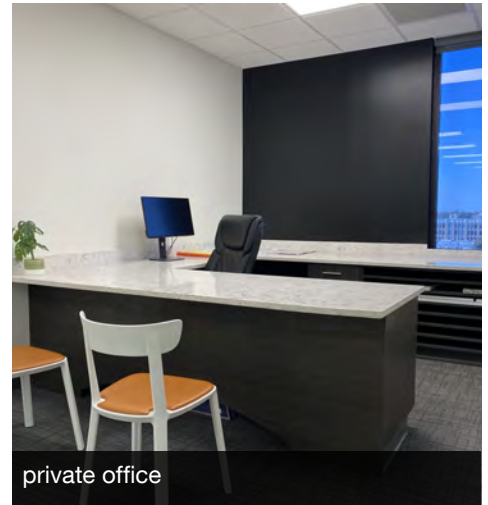
view of St. John's River



meeting space



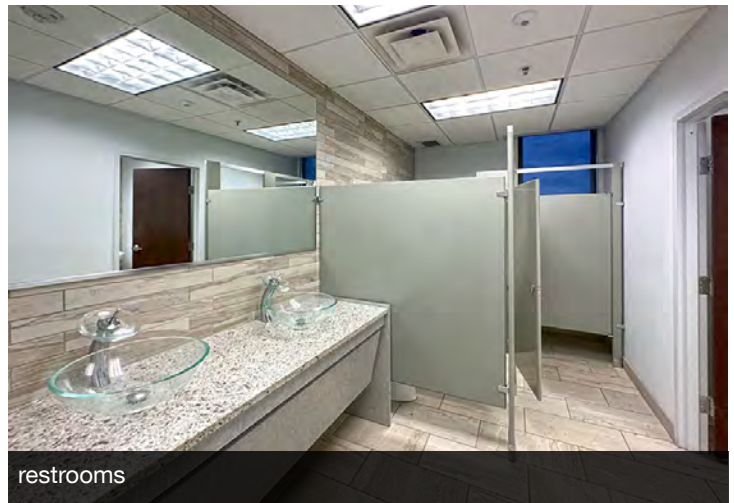
modular work stations



private office



kitchen



restrooms





Map data ©2026 Google Imagery ©2026 Airbus, Maxar Technologies