

— FOR LEASE

Calexico Crossroads
1105 - 1113 Imperial Ave W, Calexico, CA 92231

- Dominant Grocery & Drug Anchored Shopping Center
- Excellent Visibility Along Highway 111 with 34,000 Cars per Day
- Dynamic New Tenants & Development in the Shopping Center

Available:
1,840 SF / 2,031 SF
(Can be combined for 3,871 SF)



Rob Bloom

Vice President | CA License: 01302163

(619) 269-6076 | Rob@DuhsCommercial.com



COMMERCIAL
BROKERAGE • INVESTMENT • DEVELOPMENT

No warranty or representation is made to the accuracy of the foregoing information. Terms of sale or lease and availability are subject to change or withdrawal without notice.

AERIAL

Calexico Crossroads
1105 - 1113 Imperial Ave W, Calexico, CA 92231



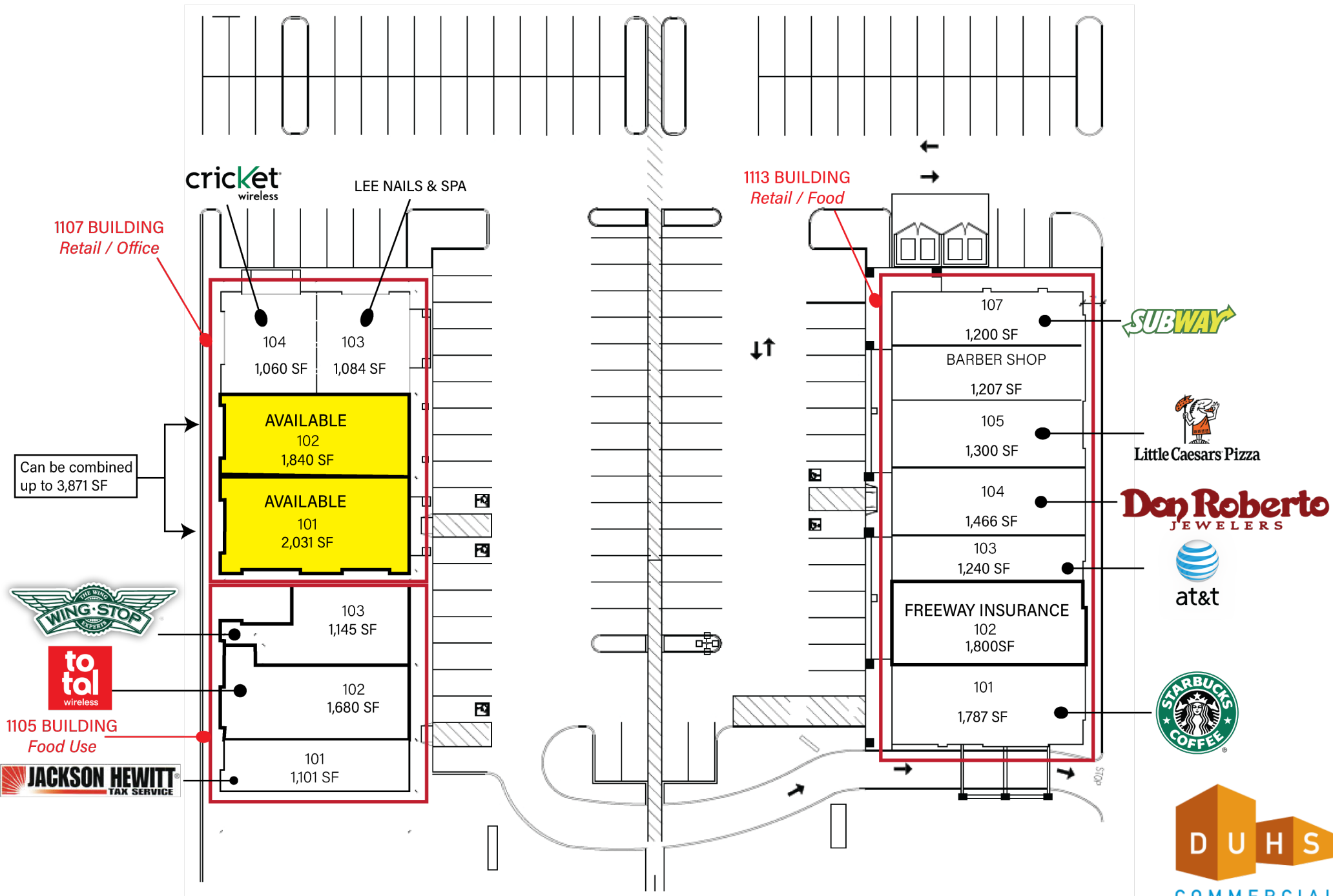
COMMERCIAL
BROKERAGE • INVESTMENT • DEVELOPMENT



No warranty or representation is made to the accuracy of the foregoing information. Terms of sale or lease and availability are subject to change or withdrawal without notice.

SITE PLAN

Calexico Crossroads
1105 - 1113 Imperial Ave W, Calexico, CA 92231



No warranty or representation is made to the accuracy of the foregoing information. Terms of sale or lease and availability are subject to change or withdrawal without notice.

AERIAL

Calexico Crossroads
 1105 - 1113 Imperial Ave W, Calexico, CA 92231



No warranty or representation is made to the accuracy of the foregoing information. Terms of sale or lease and availability are subject to change or withdrawal without notice.