



Exeter Westpark II - Building 2

Denton, Texas

Key facts

Property type	Industrial space
Building size	324,200 SF
Space available	324,200 SF



Property Features

Ceiling Clear Height Max: 36'

Dock Doors: 84

Auto Parking: 262

Sprinkler System: ESFR

Loading Type: Cross-Dock

Drive In Doors: 4

Trailer Parking Spaces: 114

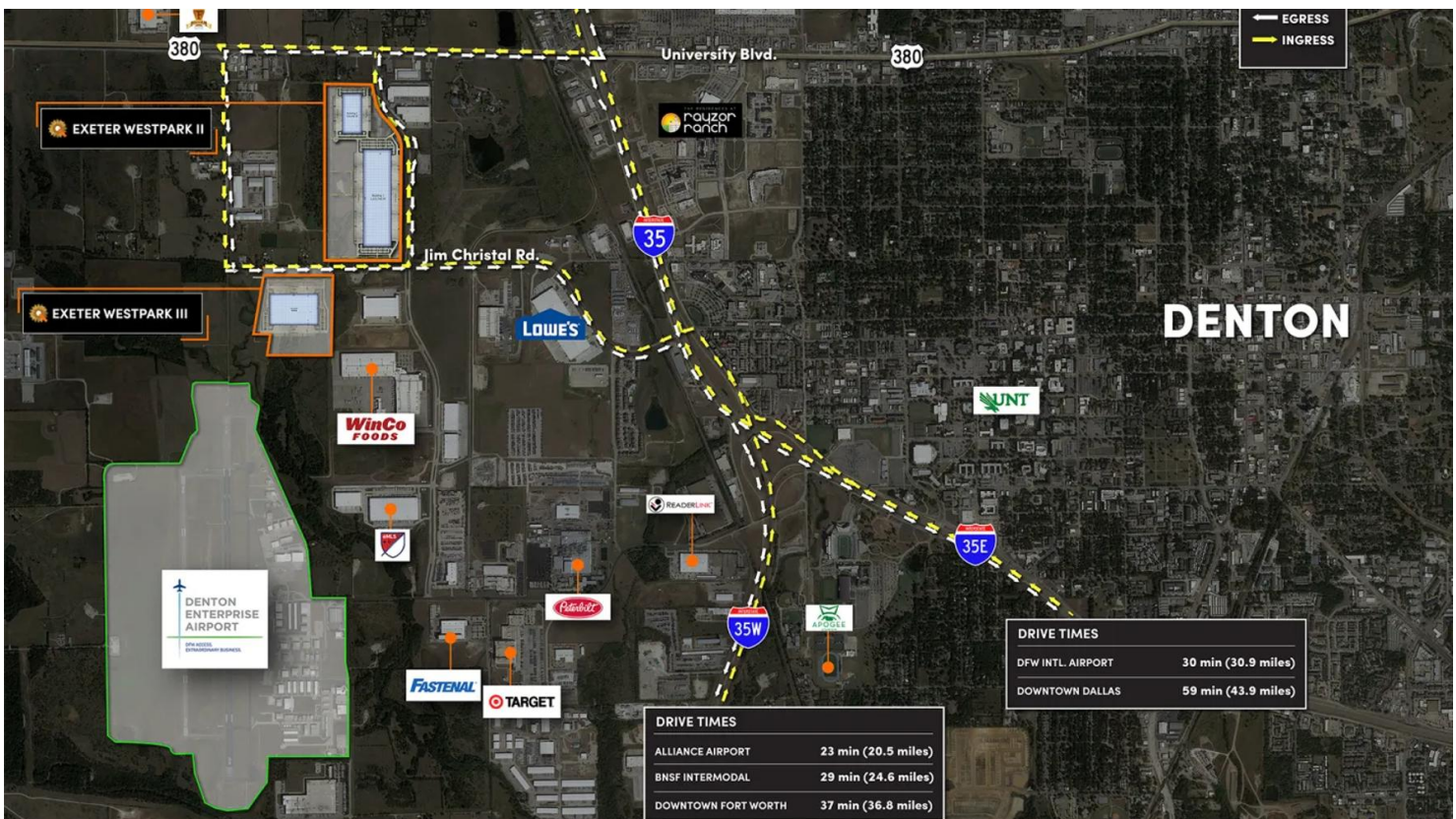
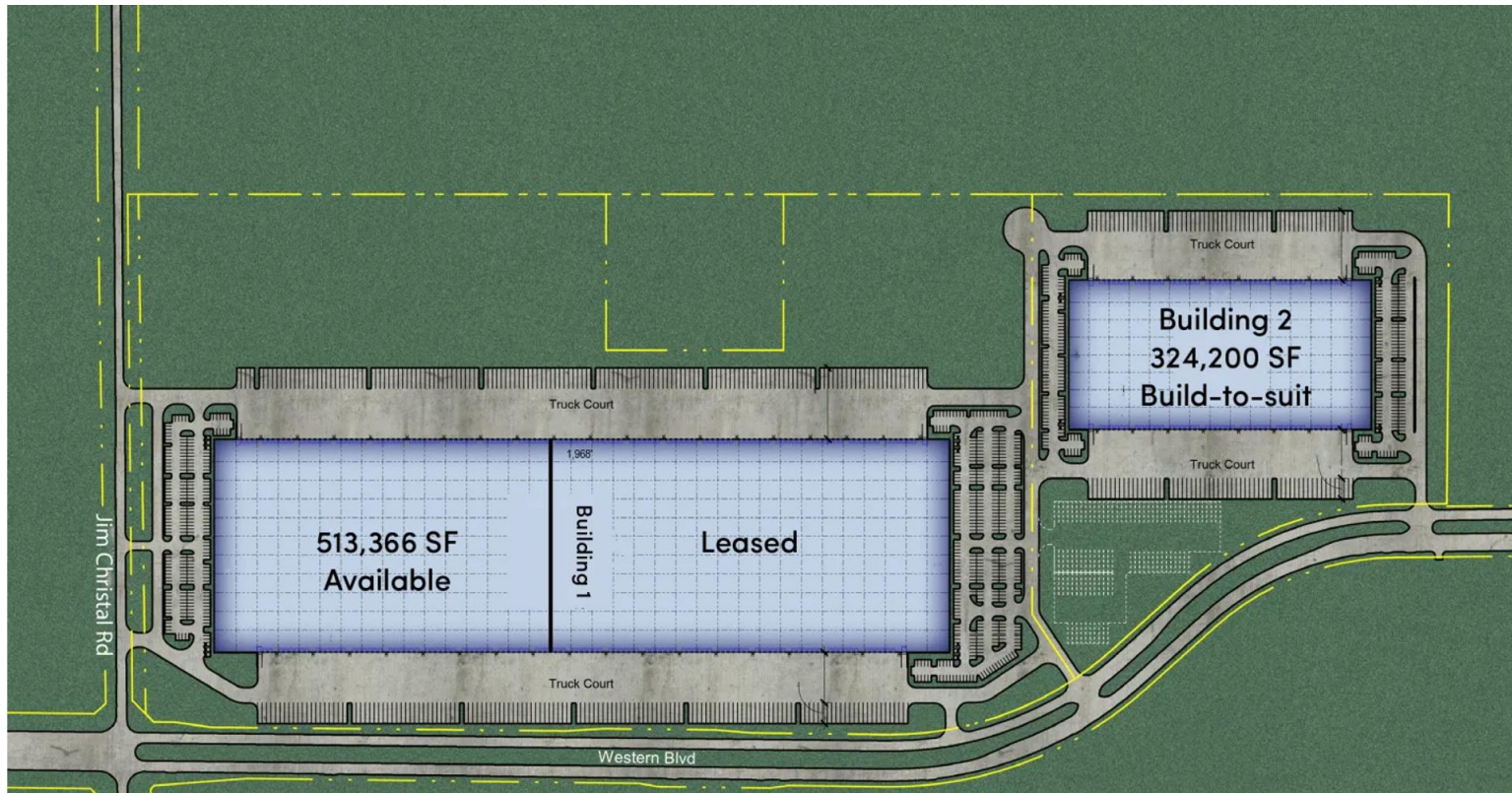
Column spacing: 50' x 50'

Additional Information

- Triple freeport
- Excellent access to I-35E (Dallas) and I-35W (Fort Worth)

Photos and floorplans





Location

Population

Total Population	87,461
Total Labor Force	49,498
Unemployment Rate	
Median Household Income	\$71,305
Warehouse Employees	1,347
High School Education	59.4%

Contact us

Learn more about this property or schedule a tour by reaching out to our local investment and leasing officer.



Colby Schraegle

+1 (214) 504-4067

colby.schraegle@eqtpartners.com