

Commercial offices at Lewisville

2826 State 121 Highway #200 & #300, Lewisville, TX 75056

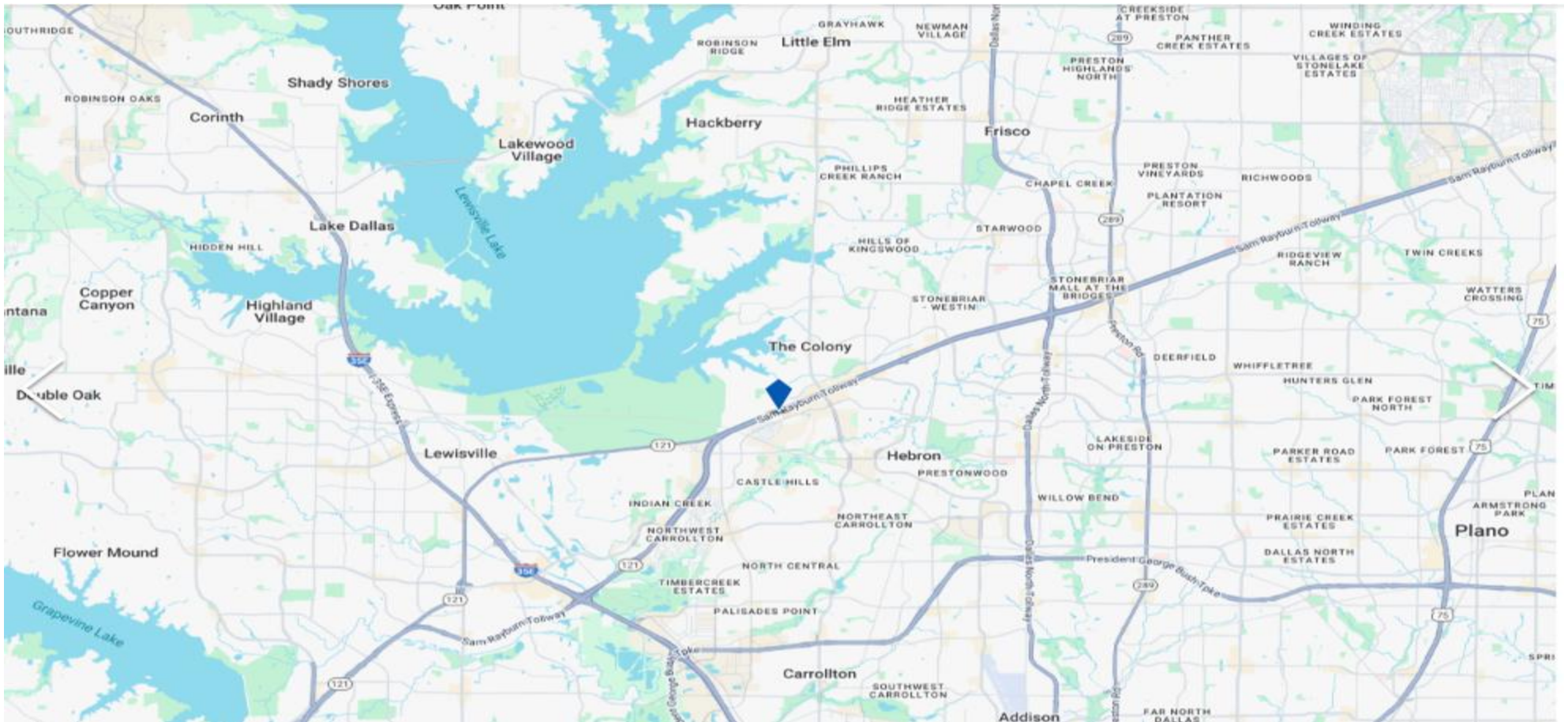


ZENAPPY REALTY
8992 PRESTON RD #101-440
FRISCO TX 75035

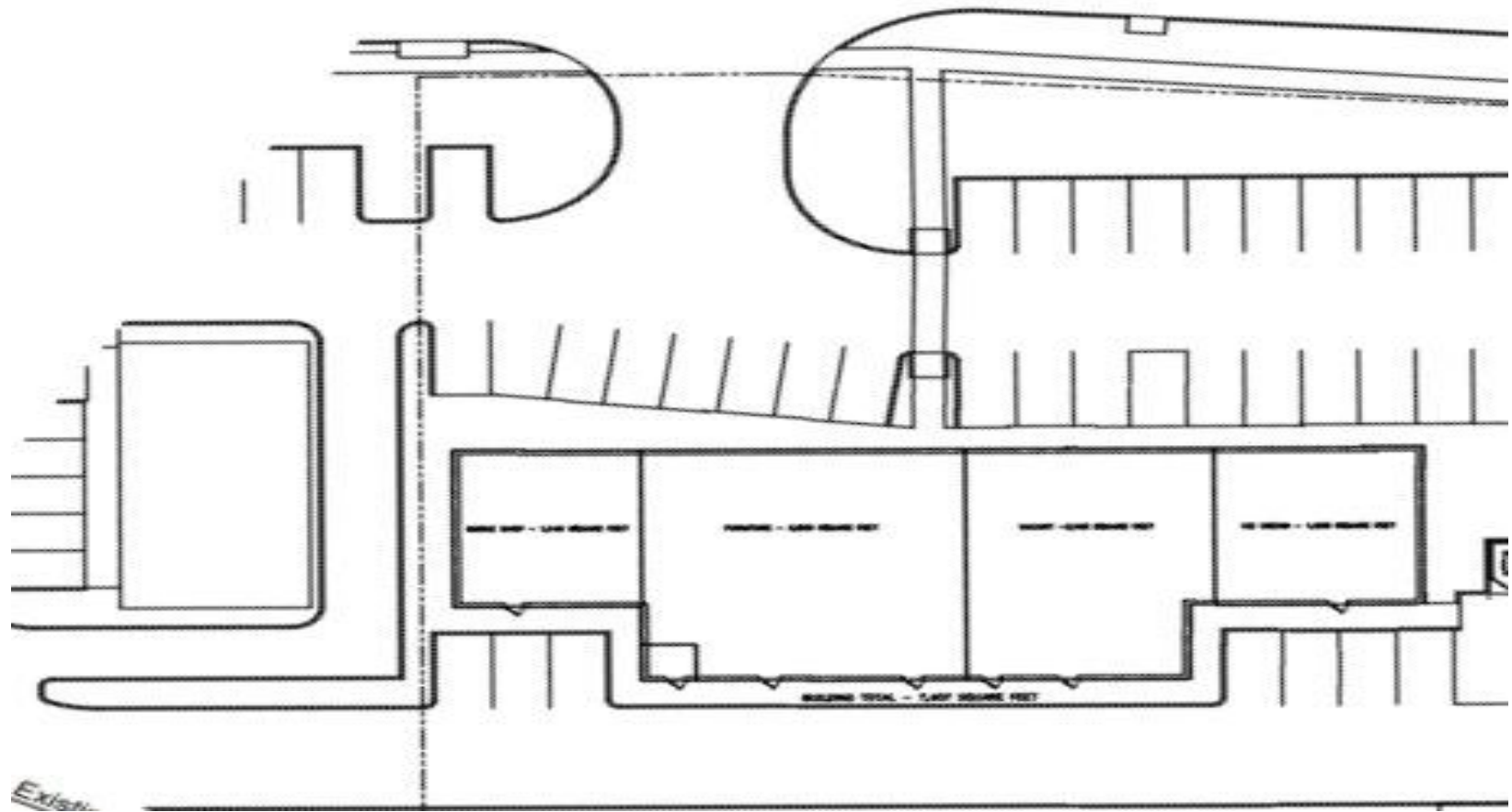


Shashi Kaligotla
(214) 430-2895
commercial@zenappy.com

Location



Floor Plan



Details and Pricing

Leasing Opportunity – 2826 State Hwy 121, Lewisville, TX 75056

Discover a prime **2,800 Sqft retail space** available for lease in one of Lewisville's most high-traffic corridors. With excellent frontage along **State Highway 121**, this property offers maximum visibility and signage potential. The space features a flexible open layout that can be **demised based on tenant requirements**, making it ideal for retail, showroom, or service concepts.

Surrounded by national retailers, dining, and rapidly growing residential communities, the location provides unmatched exposure and accessibility with convenient access to **I-35E and the Sam Rayburn Tollway**. Ample shared parking and professional exterior maintenance further enhance the appeal.

This is a rare opportunity for businesses looking to establish or expand their presence in North Texas with **flexible lease terms** available.

Listing Price is \$40 PSF + NNN

ZENAPPY REALTY
8992 PRESTON RD #101-440
FRISCO TX 75035



Shashi Kaligotla
(214) 430-2895
commercial@zenappy.com

PICTURES

