



PREMIER LARGE OFFICE SPACE ON PARK CITY MAIN STREET
APPROX 4,436 SQUARE FEET TOTAL

OLD TOWN 537 MAIN STREET | PARK CITY, UTAH 84060

KATIE WILKING CCIM, MRED
435 640-4964
katie@wc-cre.com

JILL CAMPBELL
310 600-0338
jill@wc-cre.com

BERKSHIRE HATHAWAY | UTAH
HOMESERVICES | PROPERTIES

COMMERCIAL DIVISION

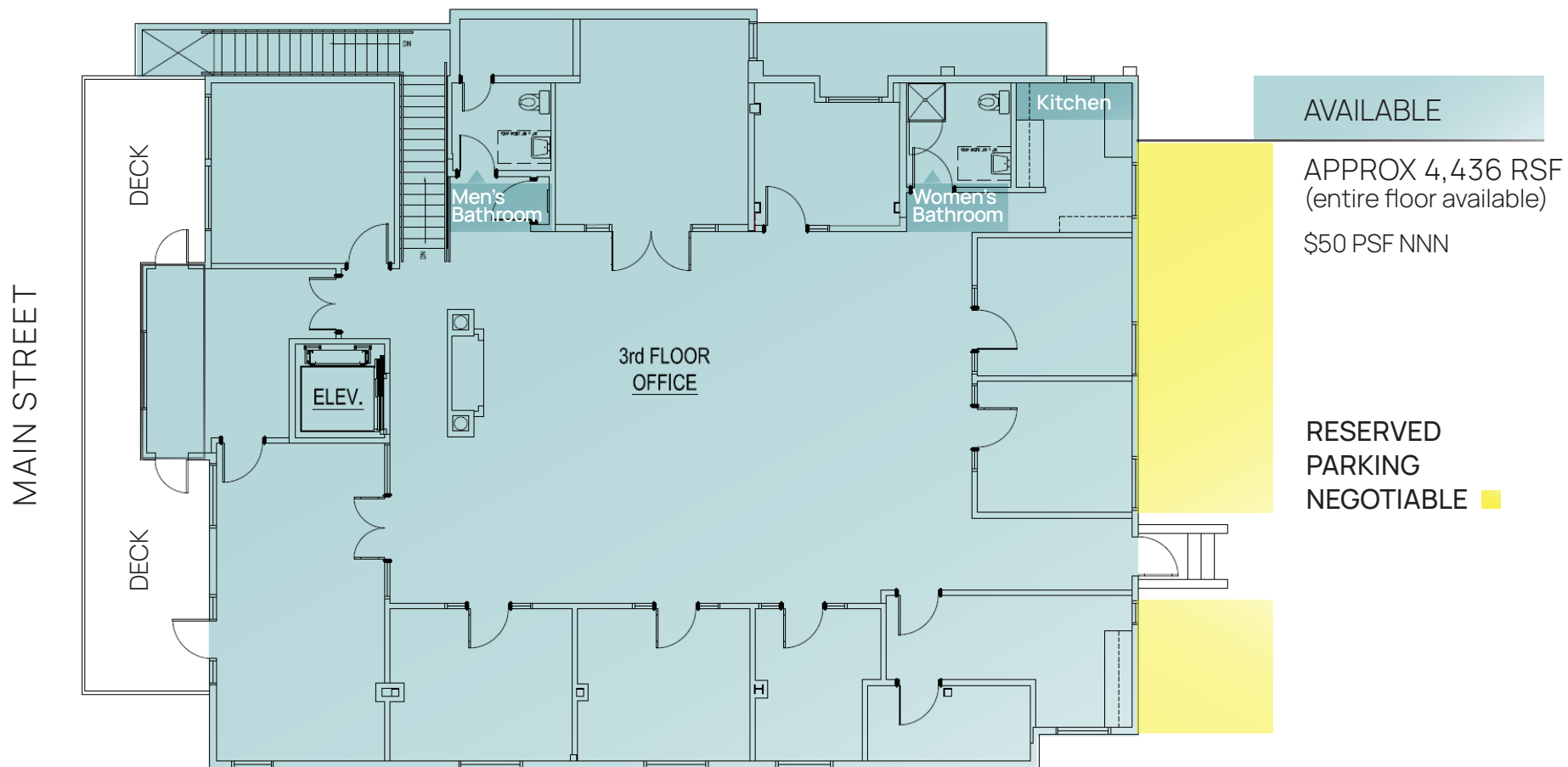
LEVEL 3 - PROPERTY PHOTOS

OLD TOWN 537 MAIN STREET | PARK CITY, UTAH 84060



LEVEL 3 - FLOORPLAN

OLD TOWN 537 MAIN STREET | PARK CITY, UTAH 84060



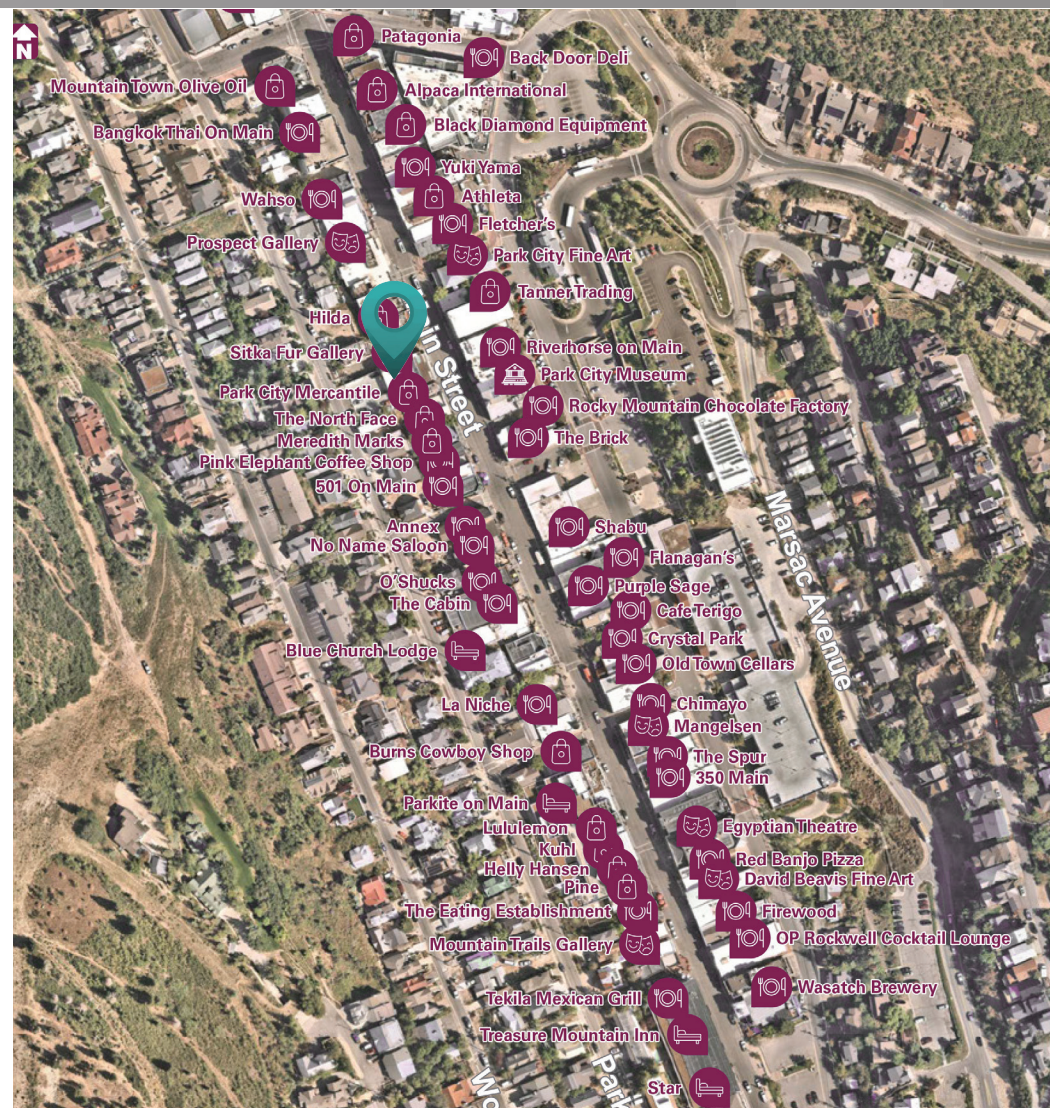
PARKING

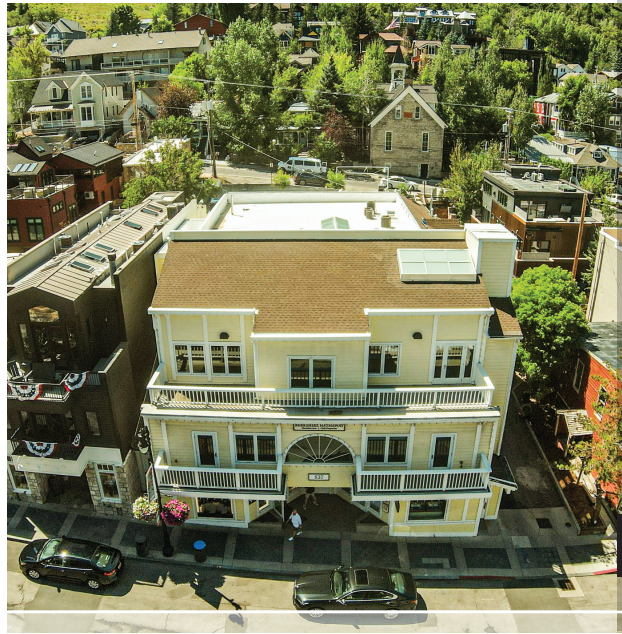
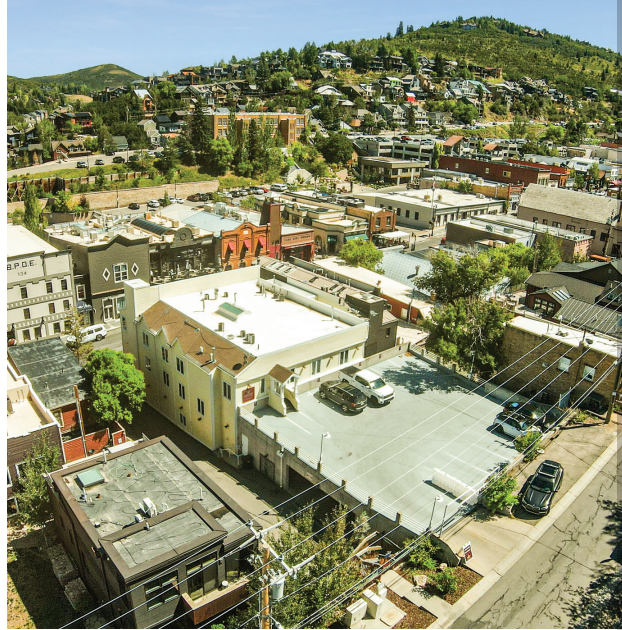
OLD TOWN 537 MAIN STREET | PARK CITY, UTAH 84060



LOCATION

OLD TOWN 537 MAIN STREET | PARK CITY, UTAH 84060





OLD TOWN
537 MAIN STREET
PARK CITY, UTAH 84060

- 3rd floor- 4,436 RSF available (entire floor)
- Main Street and Park Avenue entrances
- Exceptional location on Main Street with prime exposure
- Dedicated parking
- Ample windows with abundant natural light
- Large conference room
- Kitchenette
- 8 private offices on 3rd floor
- Balconies

\$48-\$50 PSF

i

BHHSUTAH.COM

KATIE WILKING CCIM, MRED
435 640-4964
katie@wc-cre.com

JILL CAMPBELL
310-600-0338
jill@wc-cre.com

© 2025 BHH Affiliates, LLC. An independently owned and operated franchisee of BHH Affiliates, LLC. Berkshire Hathaway HomeServices and the Berkshire Hathaway HomeServices symbol are registered service marks of Columbia Insurance Company, a Berkshire Hathaway affiliate. Equal Housing Opportunity. Information not verified or guaranteed. Berkshire Hathaway HomeServices and/or its representatives do not warrant or guarantee this information. Information herein was provided by Owner/Seller. Lessee/Purchaser is responsible to confirm any information considered a factor in a decision to lease or purchase.

BERKSHIRE HATHAWAY | UTAH PROPERTIES
HOMESERVICES

COMMERCIAL DIVISION