

Office | For Sublease

CBRE

One Atlantic Center

1201 W Peachtree St NW, Atlanta, GA 30309

Suite 1750 | 4,321 RSF Available



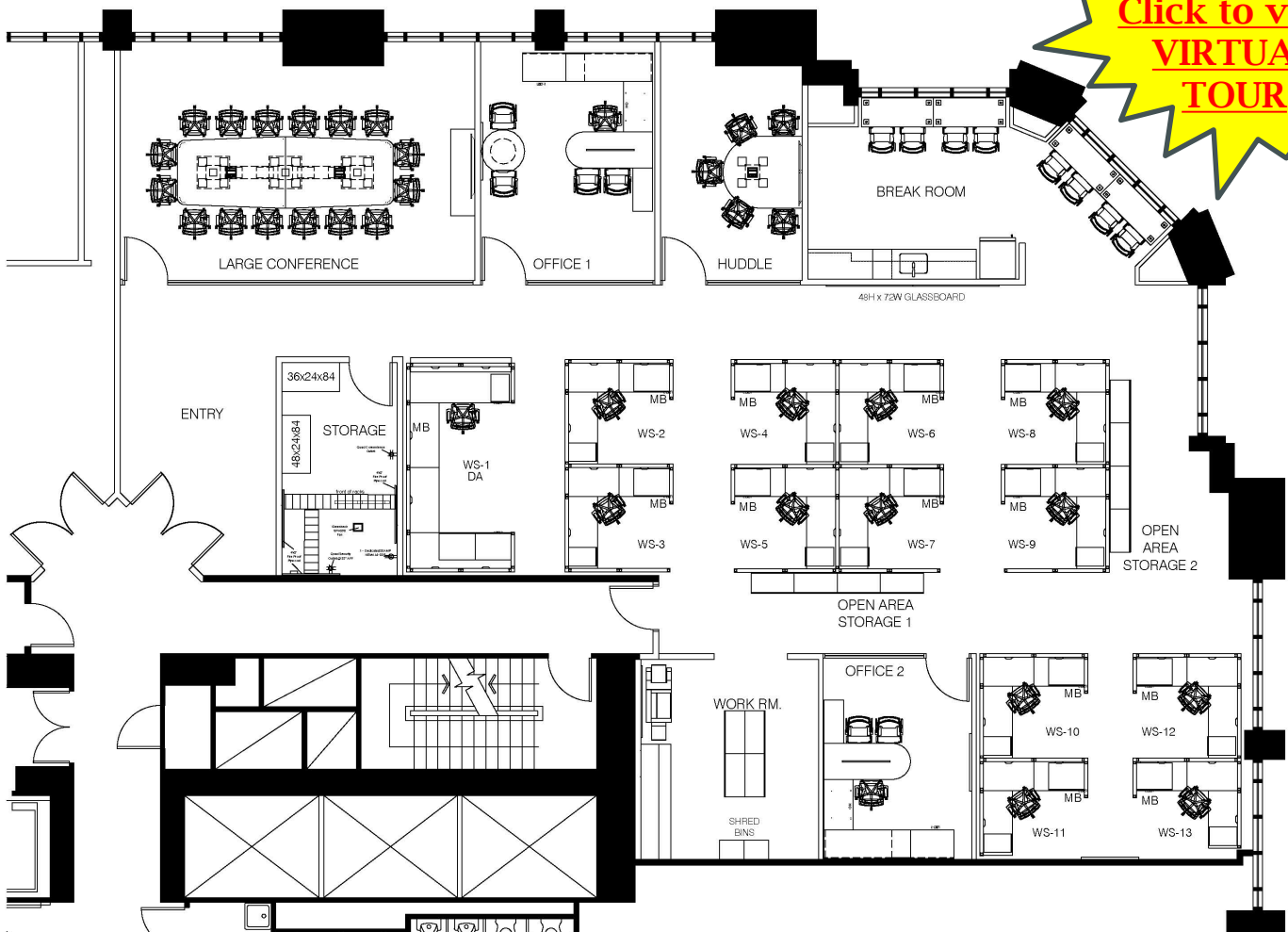
For Sublease

One Atlantic Center

1201 W Peachtree St NW, Atlanta, GA 30309

Sublease Details:

- + AVAILABLE IMMEDIATELY
- + \$38.00/SF, Full-Service Gross
- + 4,321 RSF on the 17th Floor
- + Term through April 30, 2027
- + Offered fully furnished: 2 offices; 13 workstations; large conference room; huddle room; fully equipped break room with seating for 8; network room; workflow/storage room
- + Strong credit sublandlord
- + 2/1,000 SF deck parking, café, shared tenant conference facility and fitness facility, 1 block to MARTA Arts Center Station, excellent access to Downtown Connector



For Sublease

One Atlantic Center



For Sublease

One Atlantic Center



Contact Us

John Dolan
Senior Vice President
+1 770 853 9090
john.dolan@cbre.com

Nima Ghomghani
Senior Vice President
+1 404 769 3132
Nima.ghomghani@cbre.com

CBRE, Inc.
+1 404 504 7900
3550 Lenox Rd NE
Atlanta, GA 30326

© 2024 CBRE, Inc. All rights reserved. This information has been obtained from sources believed reliable, but has not been verified for accuracy or completeness. You should conduct a careful, independent investigation of the property and verify all information. Any reliance on this information is solely at your own risk. CBRE and the CBRE logo are service marks of CBRE, Inc. All other marks displayed on this document are the property of their respective owners, and the use of such logos does not imply any affiliation with or endorsement of CBRE. Photos herein are the property of their respective owners. Use of these images without the express written consent of the owner is prohibited.