



15894 HIGHWAY 17
P.O. BOX 56
HAMPSTEAD, NC 28443
910/270-5100 FAX: 910/270-5110

FOR LEASE

SMALL OFFICE/WAREHOUSE SUITE IN JUDGES ROAD BUSINESS PARK



**311 JUDGES ROAD #13-E
WILMINGTON, NORTH CAROLINA**

This 1,140 square foot office/warehouse suite sits in the middle of the highly sought after Judges Road Business Park. The unit has a ten foot overhead door and twelve foot ceilings. The interior of the space includes 440 square feet of finished office space and well lit warehouse.

**CALL
LAURENCE NADEAU
(910) 515-3622**

Commercial & Investment Real Estate Specialists

email: info@creativecommercial.biz
www.creativecommercial.biz



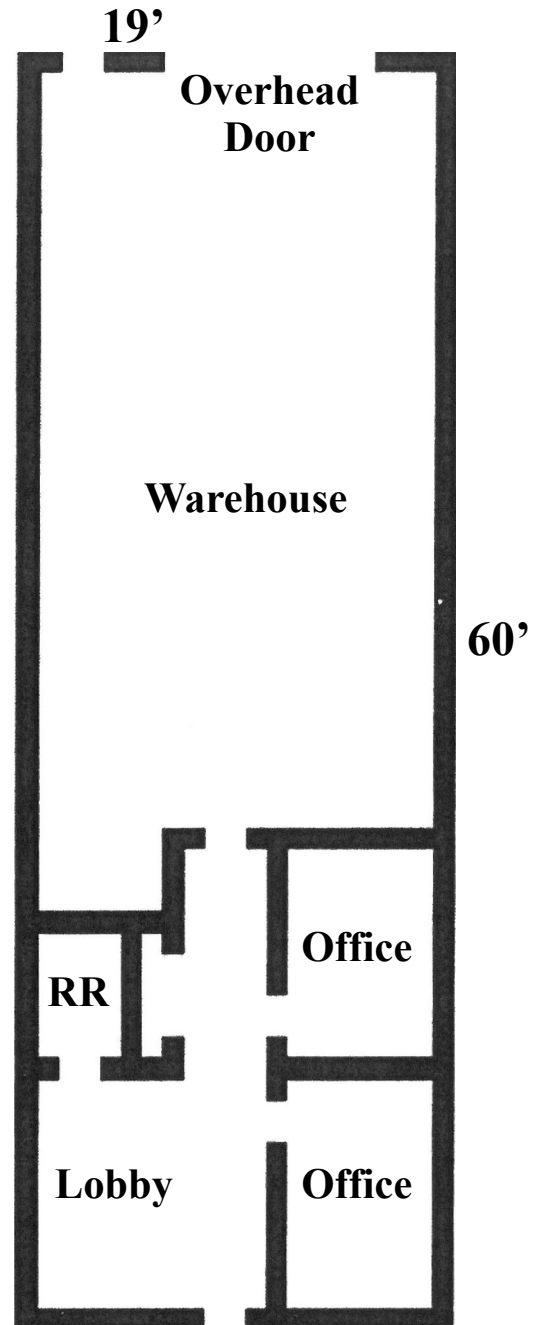
311 JUDGES ROAD #13-E

THE SUITE

- **1,140 Total Square Feet**
 - 440 Square Foot Finished Office
 - 700 Square Foot Warehouse
- **One 10' Overhead Door**
- **12' Ceiling Height**
- **LED Lighting In Warehouse**
- **One Restroom**
- **Two Designated Parking Spaces**
 - Visitor Parking Spaces Are Also Available

THE BUSINESS PARK

- **Judges Road Business Park Rules And Regulations Condo Docs Found In New Hanover County Condo Book 2164, Page 22**



THE OFFERING

\$2,100/Month
Tenant Pays Individually
Metered Electric

CREATIVE COMMERCIAL PROPERTIES, INC.

CALL

LAURENCE NADEAU

(910) 515-3622

Email: laurence@creativecommercial.biz

www.creativecommercial.biz



Individual
Members



Creative Commercial Properties, Inc. reasonably believes the information in this brochure is fairly and accurately stated. However, any prospective purchaser is urged to independently confirm its accuracy and completeness.