

# FOR LEASE

791 MIDDLEFIELD ROAD, REDWOOD CITY

SUITE 200: ±3,642 SQ. FT. OFFICE



**PREMIER  
PROPERTIES**  
COMMERCIAL  
REAL ESTATE

## BRAD EHIKIAN

Partner  
dre license #01736391  
| 650.618.3001  
| [brad.ehikian@prprop.com](mailto:brad.ehikian@prprop.com)

## JON GOLDMAN

Partner  
dre license #01295503  
| 650.618.3003  
| [jon.goldman@prprop.com](mailto:jon.goldman@prprop.com)

## JESSE EBNER

Vice President  
dre license #02055989  
| 650.618.3017  
| [jesse.ebner@prprop.com](mailto:jesse.ebner@prprop.com)

# PROPERTY HIGHLIGHTS

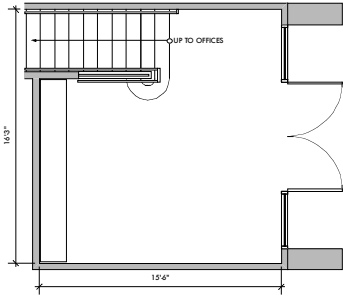
- Suite 200: ±3,642 Sq. Ft. Office
- Prime Location in Downtown Redwood City
- Great Window Line
- Mostly Open Layout with Four Privates/Meeting Rooms
- Natural Light Throughout Provided by Skylights
- In-Suite Kitchenette & Restrooms
- Private Lobby for Office Tenants on First Floor
- Bike Storage in Lobby
- Surrounded by Downtown Restaurants & Amenities
- Three Blocks from CalTrain Station
- Available Immediately



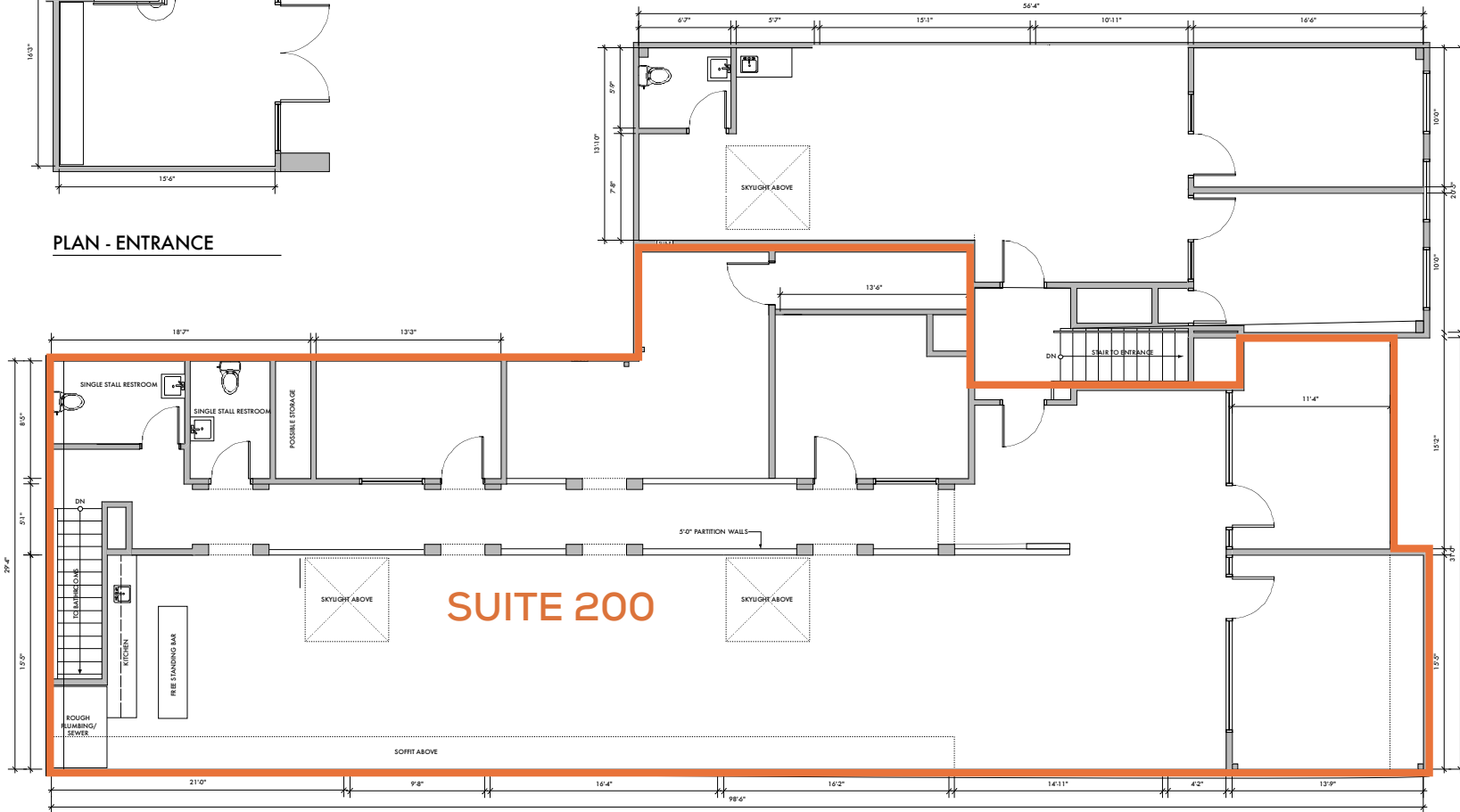


# FLOOR PLAN

Middlefield Road



PLAN - ENTRANCE



PLAN - OFFICE SPACE

May Not Be Accurate / To Scale

# AMENITIES MAP



791 MIDDLEFIELD ROAD,  
REDWOOD CITY

Caltrain

SAFeway

Redwood City  
California  
Founded 1867

REDWOOD CITY PUBLIC  
library

7911  
MIDDLEFIELD ROAD  
REDWOOD CITY

# TRANSPORTATION MAP

791 MIDDLEFIELD ROAD, REDWOOD CITY



92

San Francisco Int. Airport

San Francisco

Downtown San Carlos

Downtown San Mateo

Boyshore Fwy

101

(222,600 VPD)

791 MIDDLEFIELD ROAD, REDWOOD CITY

Caltrain


Sequoia High School


Sequoia Station

Downtown Redwood City

El Camino Real (35,200 VPD)

 PLANES  
SJC - 21 miles  
SFO - 14 miles  
OAK - 29 miles

 TRAINS  
San Francisco - 50 min  
Milbrae - 28 min  
San Jose - 46 min

 AUTOMOBILES  
San Francisco - 26 miles  
Downtown San Jose - 23 miles  
Downtown Oakland - 36 miles

# DEMOGRAPHICS



ONE-MILE POPULATION: 32,586

MEDIAN AGE

36.9

AVERAGE HOUSEHOLD SIZE



FAMILIES



FAMILIES

7,163



Average Household Income

\$165,796

Average Household Size: 2.6 | Owner Occupied Housing Units: 3,956 | Renter Occupied Housing Units: 8,227 | Median Household Income: \$115,866 | Average Household Income: \$165,796

## MAJOR EMPLOYERS:

Data for all businesses in area	1 mile
Total Businesses:	1,988
Total Employees:	20,651
Total Residential Population:	18,133
Employee/Residential Population Ratio (per 100 Residents)	180



# FOR LEASE

791 MIDDLEFIELD ROAD, REDWOOD CITY

SUITE 200: ±3,642 SQ. FT. OFFICE



**PREMIER  
PROPERTIES**  
COMMERCIAL  
REAL ESTATE

**BRAD EHIKIAN**  
Partner  
dre license #01736391  
| 650.618.3001  
| [brad.ehikian@prprop.com](mailto:brad.ehikian@prprop.com)

**JON GOLDMAN**  
Partner  
dre license #01295503  
| 650.618.3003  
| [jon.goldman@prprop.com](mailto:jon.goldman@prprop.com)

**JESSE EBNER**  
Vice President  
dre license #02055989  
| 650.618.3017  
| [jesse.ebner@prprop.com](mailto:jesse.ebner@prprop.com)