

For Lease

**2nd Floor – 888 Attree Avenue
Langford, BC**



Brand New Improved Office Space in Langford

- ✓ Modern improvements throughout the premises
- ✓ Surface parking on-site for staff and clients
- ✓ Central location in the heart of Langford
- ✓ Mass timber construction

Contact Us

Nathaniel Simpson

Vice President

250.382.3400

nathaniel.simpson@avisonyoung.com

**James Murray (Personal Real
Estate Corporation)**

Vice President

250.382.3400

james.murray@avisonyoung.com

**AVISON
YOUNG**

888 Attree Avenue Langford, BC

PREMISES

2nd Floor

SIZE

1,500 SF

GROSS RENT

\$5,200 per month + GST

AVAILABLE

Immediately

PARKING

Ample surface parking on-site

CONDITION

Improved as office (*some furniture can be available if needed*)

Contact Us

Nathaniel Simpson

Vice President

250.382.3400

nathaniel.simpson@avisonyoung.com

James Murray

Vice President

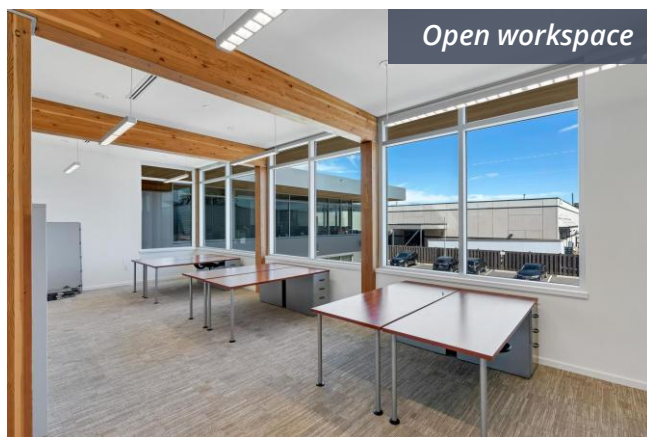
250.382.3400

james.murray@avisonyoung.com

**AVISON
YOUNG**

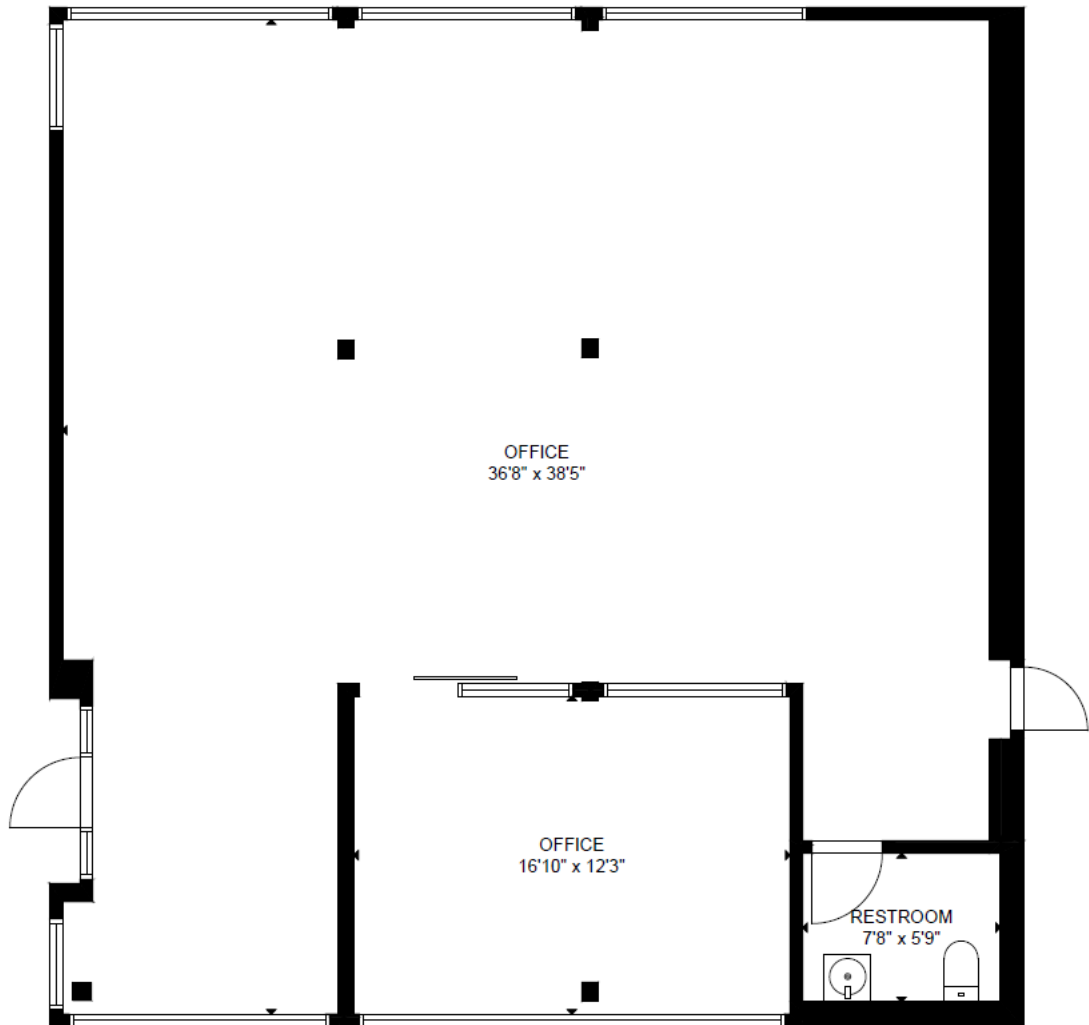
Opportunity

Lease immaculate turn-key space in central Langford. The subject space is beautifully improved with exposed timber beams, modern glazing, new carpet tile, and superior natural light from large exterior windows. With ample parking at the front and rear of the building, this opportunity is ideally suited to any occupier in need of office space in the Western Communities.



Floor Plan

AVISON
YOUNG



Features

- Stunning main entryway
- Large open-concept workspace
- One large office/meeting room
- Private washroom in suite
- Elevator access to 2nd floor
- Modern improvements
- Ample natural light throughout
- Move-in-ready space

Location



Contact Us

Nathaniel Simpson

Senior Associate

250.382.3400 ext. 106

nathaniel.simpson@avisonyoung.com

James Murray

Senior Associate

250.382.3400 ext. 109

james.murray@avisonyoung.com

**AVISON
YOUNG**