

CBRE

10015  
FOOTHILLS BLVD  
ROSEVILLE, CA



29,123 SF  
SPACE FOR SUBLEASE

# SPACE SPECIFICATIONS

ASKING RENT: \$1.00 PSF/MONTH, NNN

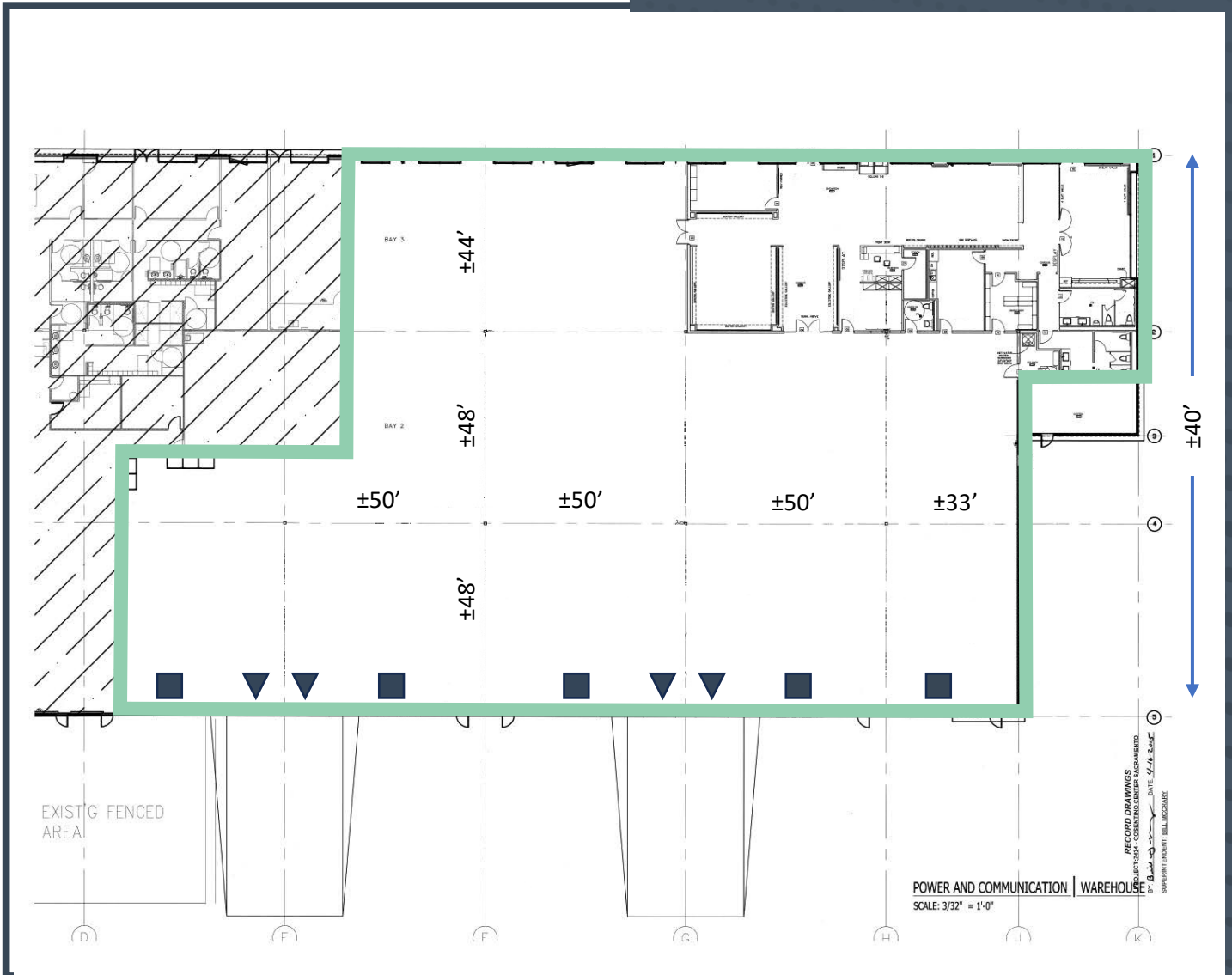
Spec Type	Spec Details
Total Available	±29,123 SF
Office	±5,373 SF
Warehouse	±23,750 SF
Dock Doors	4 (±9' x 10')
Drive-In Doors	5 (±12' x 14')
Clear Height	±20' min.
Power	±200 Amps @ 480 Volt (up to ±1,000A possible)
Column Spacing	±48' x 50'
Construction	Concrete Tilt
Year Built	2001
Zoning	Light Industrial (per city of Roseville)
APN #	017-250-053-000 (Placer County)
NOTES	Sublease term through 02/29/2028

# AERIAL MAP



29,123 SF  
SPACE FOR SUBLEASE

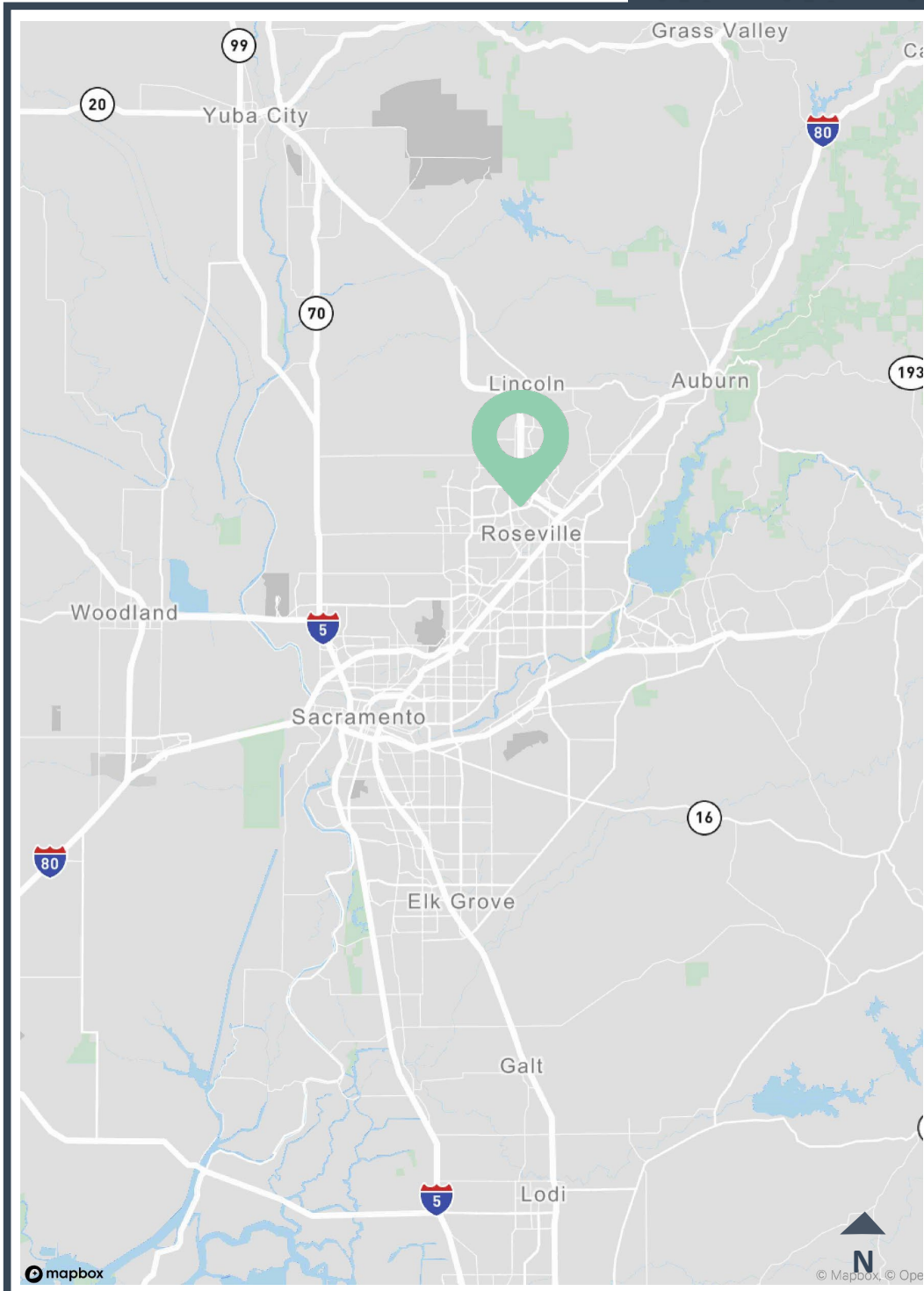
# FLOOR PLAN



- ▼ = DOCK LOADING
- = GRADE LEVEL LOADING

NOT TO SCALE. ALL DIMENSIONS ARE APPROXIMATE.

# MAP



29,123 SF  
SPACE FOR SUBLEASE

10015  
FOOTHILLS BLVD  
ROSEVILLE, CA

---

**TODD SANFILIPPO**  
Executive Vice President  
+1 916 847 3206  
todd.sanfilippo@cbre.com  
Lic. 01045162

**CBRE**

© 2026 CBRE, Inc. All rights reserved. This information has been obtained from sources believed reliable but has not been verified for accuracy or completeness. CBRE, Inc. makes no guarantee, representation or warranty and accepts no responsibility or liability as to the accuracy, completeness, or reliability of the information contained herein. You should conduct a careful, independent investigation of the property and verify all information. Any reliance on this information is solely at your own risk. CBRE and the CBRE logo are service marks of CBRE, Inc. All other marks displayed on this document are the property of their respective owners, and the use of such marks does not imply any affiliation with or endorsement of CBRE. Photos herein are the property of their respective owners. Use of these images without the express written consent of the owner is prohibited.