

Medical/Office Space for Lease

\$19/SF
+ utilities & cleaning



Burke Professional Center
5252 Suite #203 Lyngate Court,
Burke, VA 22015

- C-2 zoning
- Second floor unit
- Approximately \$5,570/mo NNN
- Ideal for office & medical use
- Windowed offices
- Ample, no cost surface parking
- Individual suite signage
- Conveniently located at the corner of Rolling and Braddock Road minutes from I-495

5252 Suite 203

3,518 SF

Available Now

Kelly O'Brien: 703-447.1511

kobrien@landmarkcre.com

Blair White, CCIM: 703-307-9711

blair@landmarkcre.com

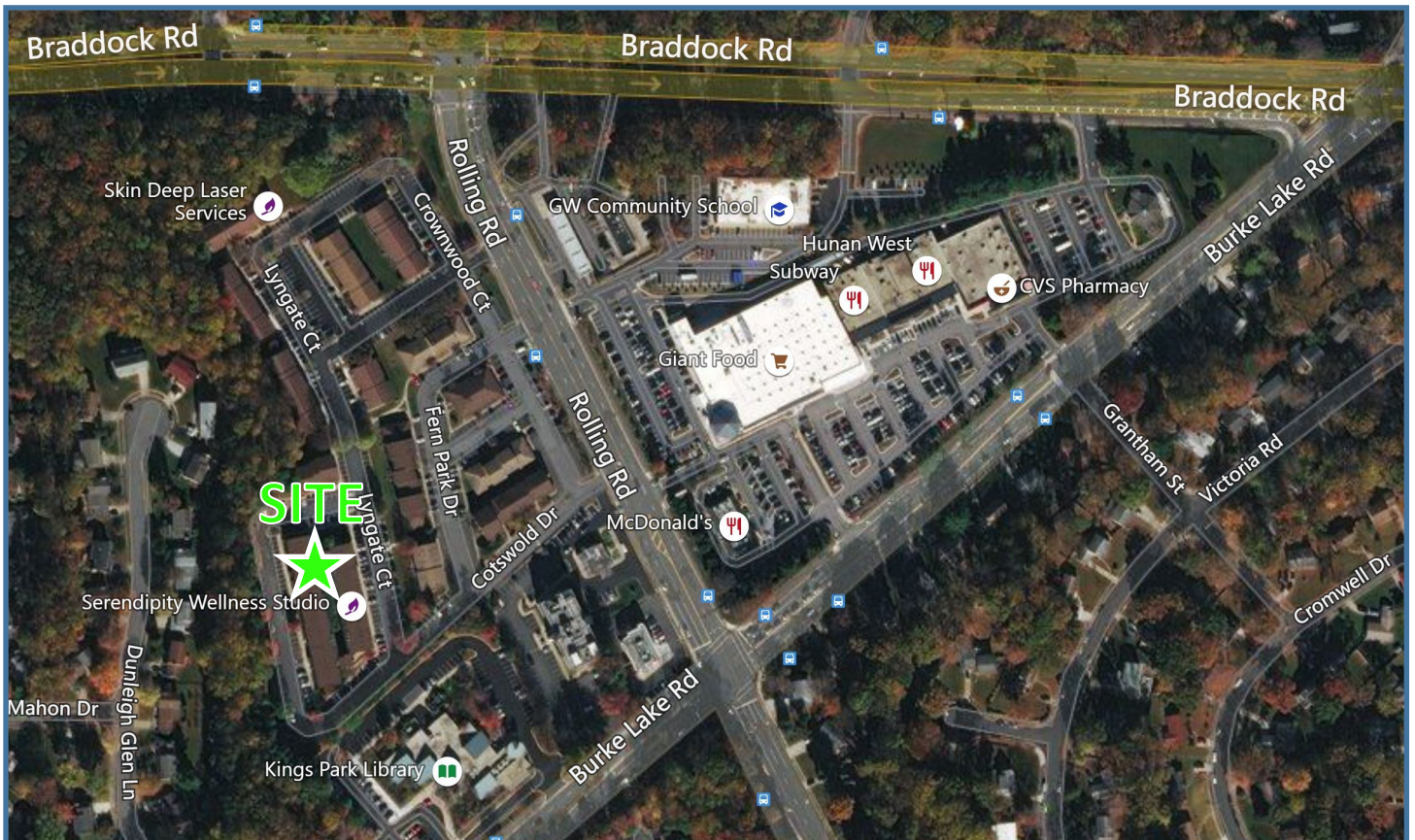
Landmark Commercial Real Estate

LandmarkCRE.com



LANDMARK
COMMERCIAL REAL ESTATE

Aerials



Kelly O'Brien: 703-447-1511

kobrien@landmarkcre.com

Blair White, CCIM: 703-307-9711

blair@landmarkcre.com

Landmark Commercial Real Estate

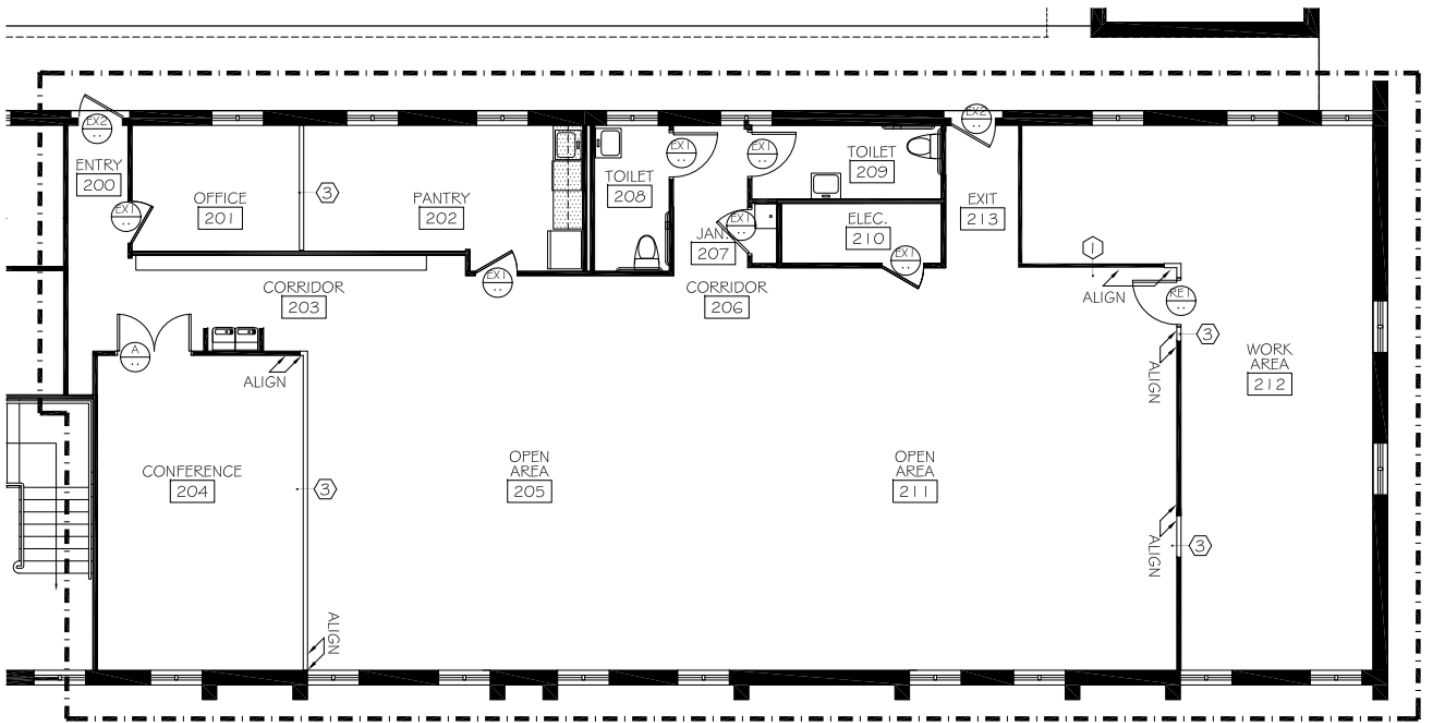
703-437-1440

LandmarkCRE.com



LANDMARK
COMMERCIAL REAL ESTATE

5252 Suite #203 Lyngate Court | Second Floor



The information above has been obtained from sources believed to be reliable. While we do not doubt its accuracy we have not verified it and make no guarantee, warranty or representation about it. It is your responsibility to independently confirm its accuracy and completeness. Any projections, opinions, assumptions, or estimates used are for example only and do not represent the current or future performance of the property. The value of this transaction to you depends on tax and other factors which should be evaluated by your tax, financial, and legal advisors. You and your advisors should conduct a careful, independent investigation of the property to determine to your satisfaction the suitability of the property for your needs.

Kelly O'Brien: 703-447-1511

kobrien@landmarkcre.com

Blair White, CCIM: 703-307-9711

blair@landmarkcre.com

Landmark Commercial Real Estate

LandmarkCRE.com

