

Mt. Rushmore Building

325-333 NE Russell Street, Portland OR 97212

FOR LEASE



This historic mixed-use building offers you all of the best parts of a bustling, energetic neighborhood. Perched on a busy street corner with plenty of foot traffic, the building's street level restaurants, retail spaces, and upstairs office suites provide unparalleled visibility with a charming exterior. Tenants of the Mt. Rushmore Building enjoy an ample parking lot with ADA, tenant, and guest parking, secure building access, and optional basement storage.

Matt Schweitzer

matt@northrimpdx.com

503-525-1927



northrimpdx.com

819 SE Morrison Street, Ste 110, Portland OR 97214 | 503-525-1925

FOR LEASE

Mt. Rushmore Building

325-333 NE Russell Street, Portland, OR 97212



Property Details

- Beautifully renovated historic Portland building
- Street level restaurant and retail suites
- 2nd floor office suites
- Furnished 2nd floor lobby
- Secure building access
- Guest and tenant parking lot
- Optional basement storage available
- Locally owned and professionally managed

Location Details

- Located in Portland's vibrant Eliot neighborhood
- Rated as a "Walker's Paradise with frequent foot traffic"
- 9 Minute walk from Portland Streetcar -- B Loop at NE Broadway
- Easy access to Highways I-5 and I-84

Matt Schweitzer

matt@northrimpdx.com

503-525-1927



northrimpdx.com

819 SE Morrison Street, Ste 110, Portland OR 97214 | 503-525-1925



Demographics & Traffic Count

- Population 25,215
- Projected Population (2029) 26,826
- Median Household Income \$133,653
- Median Age 38.13
- Daily Traffic Count 25,490

MT. RUSHMORE BUILDING

Mixed Use with Retail, Restaurant, and Office Suites

FOR LEASE

Matt Schweitzer

matt@northrimpdx.com

503-525-1927



northrimpdx.com

819 SE Morrison Street, Ste 110, Portland OR 97214 | 503-525-1925



MT. RUSHMORE BUILDING

Mixed Use with Retail, Restaurant, and Office Suites

FOR LEASE

Matt Schweitzer

matt@northrimpx.com

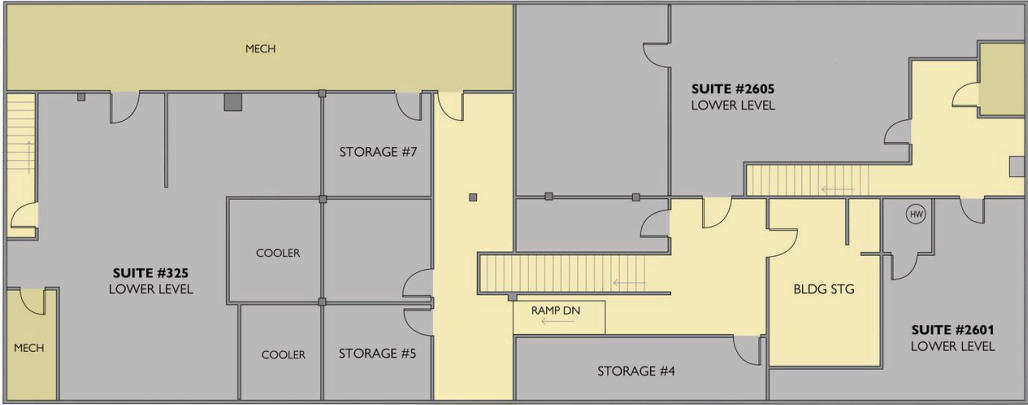
503-525-1927



northrimpx.com

819 SE Morrison Street, Ste 110, Portland OR 97214 | 503-525-1925

LOWER LEVEL



MT. RUSHMORE BUILDING

Mixed Use with Retail, Restaurant, and Office Suites

FOR LEASE

Matt Schweitzer

matt@northrimpx.com

503-525-1927

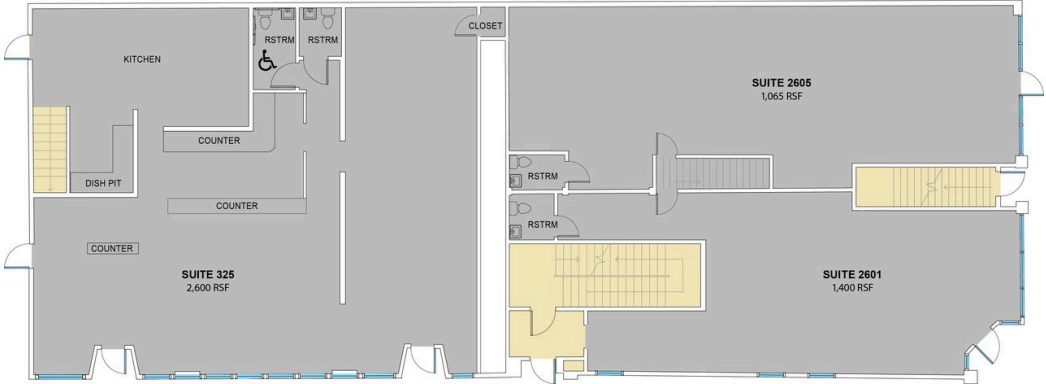


northrimpx.com

819 SE Morrison Street, Ste 110, Portland OR 97214 | 503-525-1925

The information contained in this package has been obtained from sources we believe to be reliable. While we do not doubt its accuracy, we have not verified it and make no guarantee, warranty or representation about it. It is your sole responsibility to independently confirm its accuracy and completeness. Any projections, opinions, assumptions or estimates used are for example only and do not represent the current or future performance of the property. ©2026 North Rim Commercial Properties

FIRST FLOOR



MT. RUSHMORE BUILDING

Mixed Use with Retail, Restaurant, and Office Suites

FOR LEASE

Matt Schweitzer

matt@northrimpdx.com

503-525-1927

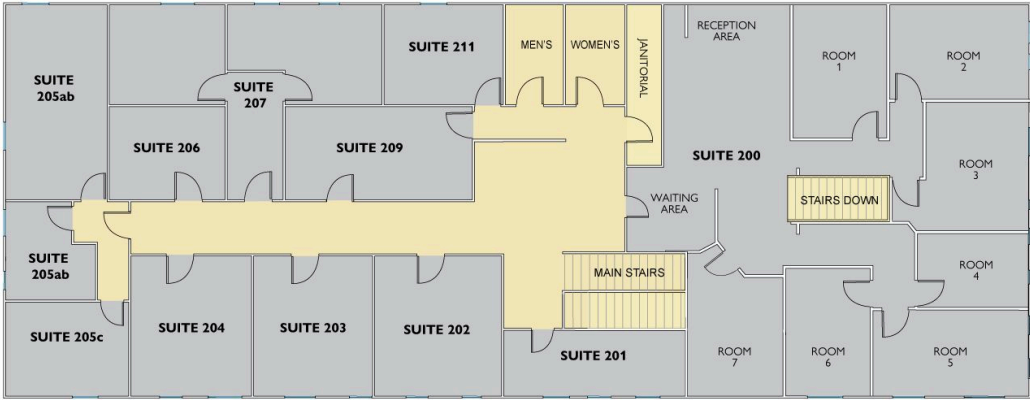


northrimpdx.com

819 SE Morrison Street, Ste 110, Portland OR 97214 | 503-525-1925

The information contained in this package has been obtained from sources we believe to be reliable. While we do not doubt its accuracy, we have not verified it and make no guarantee, warranty or representation about it. It is your sole responsibility to independently confirm its accuracy and completeness. Any projections, opinions, assumptions or estimates used are for example only and do not represent the current or future performance of the property. ©2026 North Rim Commercial Properties

SECOND FLOOR



MT. RUSHMORE BUILDING

Mixed Use with Retail, Restaurant, and Office Suites

FOR LEASE

Matt Schweitzer

matt@northrimpdx.com

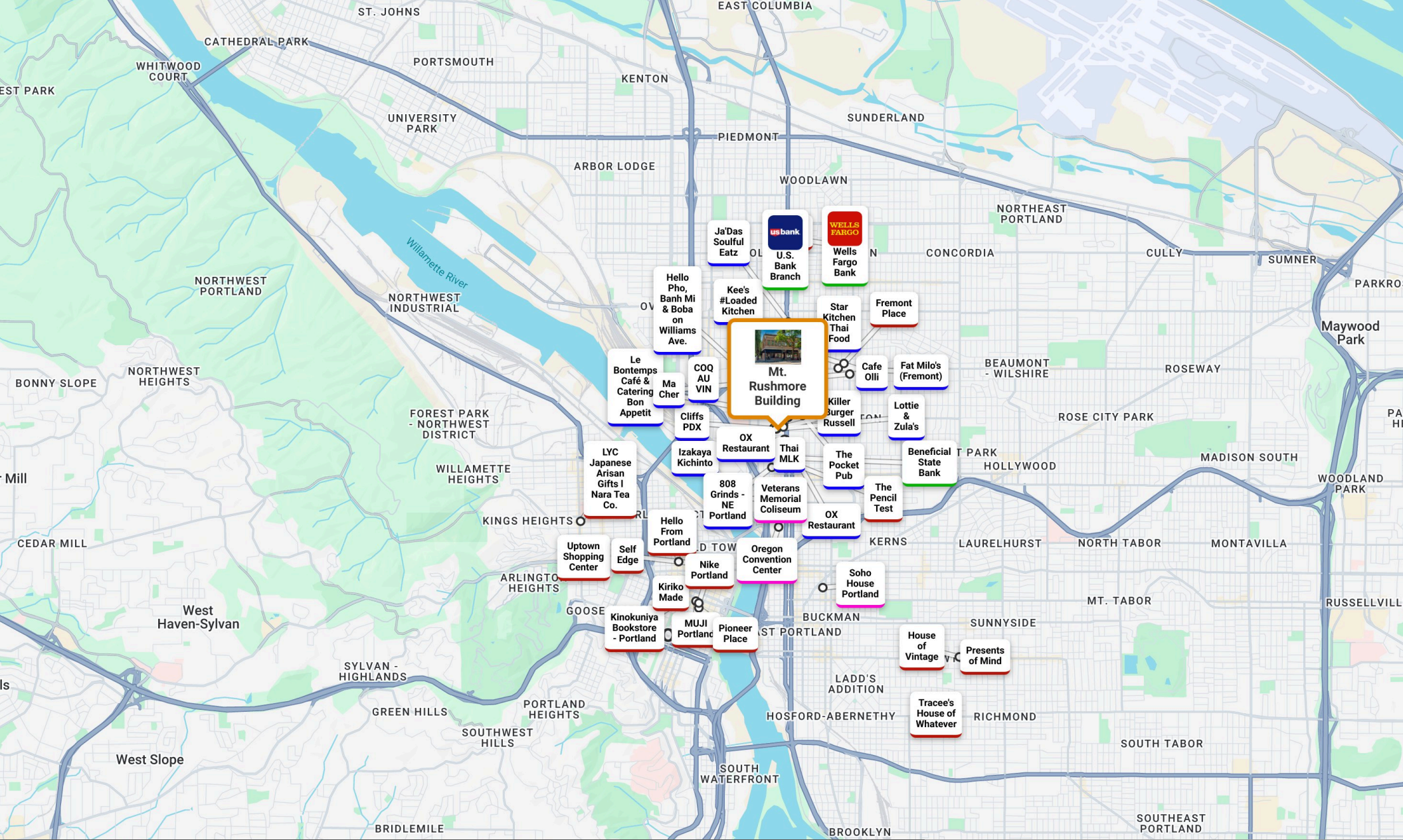
503-525-1927



northrimpdx.com

819 SE Morrison Street, Ste 110, Portland OR 97214 | 503-525-1925

The information contained in this package has been obtained from sources we believe to be reliable. While we do not doubt its accuracy, we have not verified it and make no guarantee, warranty or representation about it. It is your sole responsibility to independently confirm its accuracy and completeness. Any projections, opinions, assumptions or estimates used are for example only and do not represent the current or future performance of the property. ©2026 North Rim Commercial Properties



MT. RUSHMORE BUILDING
 325-333 NE Russell Street, Portland, OR 97212

FOR LEASE

Matt Schweitzer
 matt@northrimpdx.com | 503-525-1927



northrimpdx.com
 819 SE Morrison Street, Ste 110, Portland OR 97214 | 503-525-1925