

25 Central Park West, #1/2

Between West 62nd & 63rd Streets
New York, NY 10023

HELLER

ORGANIZATION



SIZE: Two Ground Floor Professional / Medical Spaces
– Can be Combined to Approximately 1,800 SF

POSSESSION: Immediate

RENT: Upon Request

COMMENTS:

- PRIME Entry Directly on Central Park West!
- Currently Configured as Two Separate Offices
– Can Be Delivered Combined.
- Each Unit features a Waiting Area, Storage Closet, 3 Offices, and a Bathroom. Unit #2 Also Includes a Kitchenette.
- Professional / Medical Use Considered
- Elevator Building with Full-Time Doorman and Staff

DESCRIPTION:

One of a kind opportunity to purchase or lease, and with the option to combine, two separate Ground Floor professional/medical offices in a historic pre-war condo on Central Park West. Mere steps from Central Park, and with outstanding views of the park through a combined seven windows, natural light comes in throughout the day. Perfect for repurposing for many specialties or offices of any kind. A once in a lifetime chance for the future of your business! Perfect for any general office use or outpatient medical offices such as plastic surgery, psychiatry, dentistry, orthodontics, etc. Low maintenance charges!



CONTACT EXCLUSIVE AGENTS:

HELLER
ORGANIZATION

JOSH SINGER

josh@hellerorg.com
917.332.7530

Brown
Harris
Stevens

GEOFFREY WIGDOR

gwigdor@bhsusa.com
646.623.1392

54 West 21st Street, #608 | New York, NY 10010 | O: 212.366.5034 | retail@hellerorg.com

All information is from sources deemed reliable. No representation is made and we do not guarantee the accuracy of any information provided. All information must be independently verified. The value of any real estate investment is dependant on a variety of factors and should be evaluated carefully by prospective purchasers and/or tenants.

25 Central Park West, #1/2

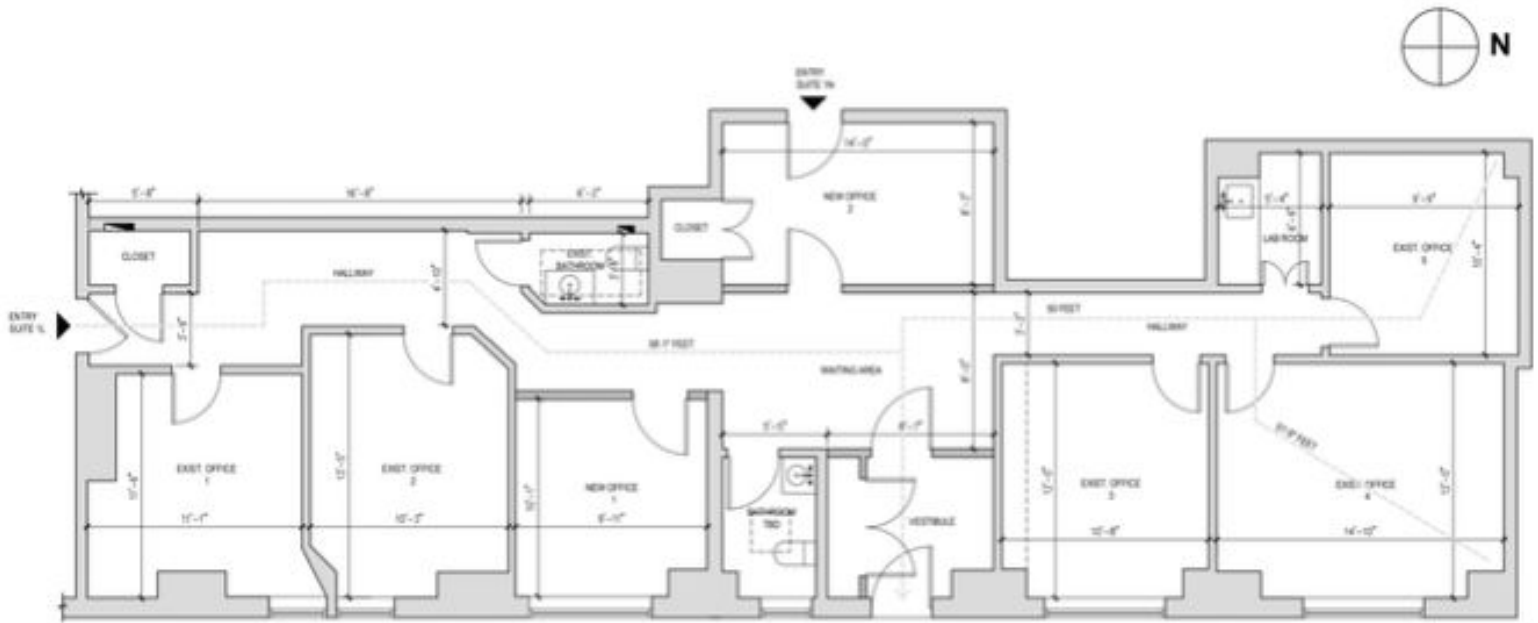
Between West 62nd & 63rd Streets
New York, NY 10023

HELLER

ORGANIZATION

FLOOR PLAN:

SPACES 1&2 Combined



ENTRY

CENTRAL PARK WEST

CONTACT EXCLUSIVE AGENTS:

HELLER
ORGANIZATION

JOSH SINGER
josh@hellerorg.com
917.332.7530

**Brown
Harris
Stevens**

GEOFFREY WIGDOR
gwigdor@bhsusa.com
646.623.1392

25 Central Park West, #1/2

Between West 62nd & 63rd Streets
New York, NY 10023

HELLER

ORGANIZATION



CONTACT EXCLUSIVE AGENTS:

HELLER
ORGANIZATION

JOSH SINGER
josh@hellerorg.com
917.332.7530

**Brown
Harris
Stevens**

GEOFFREY WIGDOR
gwigdor@bhsusa.com
646.623.1392

54 West 21st Street, #608 | New York, NY 10010 | O: 212.366.5034 | retail@hellerorg.com

All information is from sources deemed reliable. No representation is made and we do not guarantee the accuracy of any information provided. All information must be independently verified. The value of any real estate investment is dependant on a variety of factors and should be evaluated carefully by prospective purchasers and/or tenants.