

200 Q STREET

Sacramento, CA 95811

RETAIL SPACE
FOR LEASE

±2,500 SF



NEWMARK

CHANDLER EDEN

t 916.569.2380
Chandler.Eden@nrmk.com
CA RE License #02081848

ALI NADIMI

t 916.569.2355
Ali.Nadimi@nrmk.com
CA RE License #01723313

PROPERTY SUMMARY

OFFERING SUMMARY

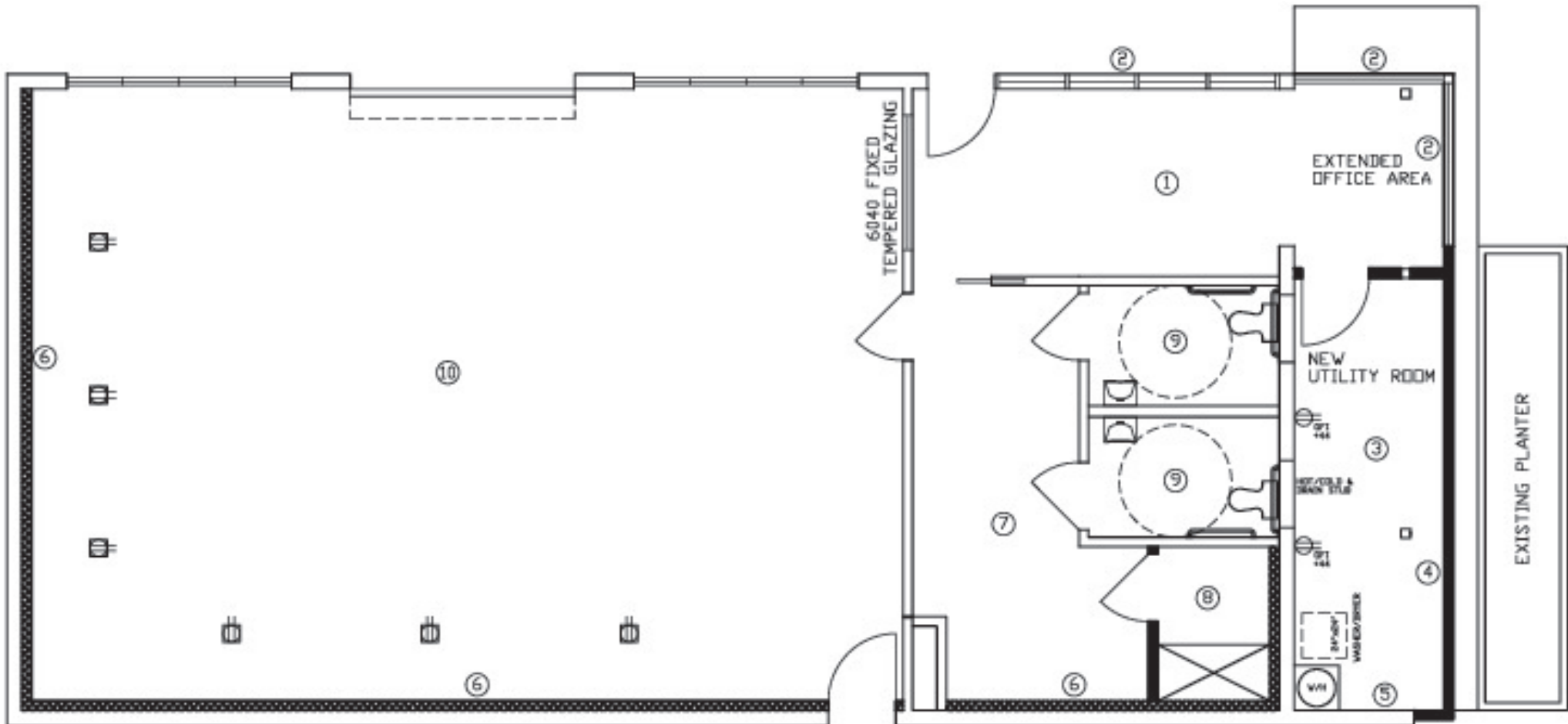
Lease Rate:	\$2.50/SF (NNN)
Available SF:	2,500 SF

PROPERTY HIGHLIGHTS

- Freestanding Building with fenced Yard Space
- Conveniently located on Q Street which is one of the main thoroughfares through downtown and midtown Sacramento.
- Abundant Parking.
- 3 grade-level roll up doors.
- Easy Access to the I-5 and HWY 50 Freeways.
- Ideal space for many different uses



FLOOR PLAN - 200 Q STREET, SACRAMENTO, CA 95811

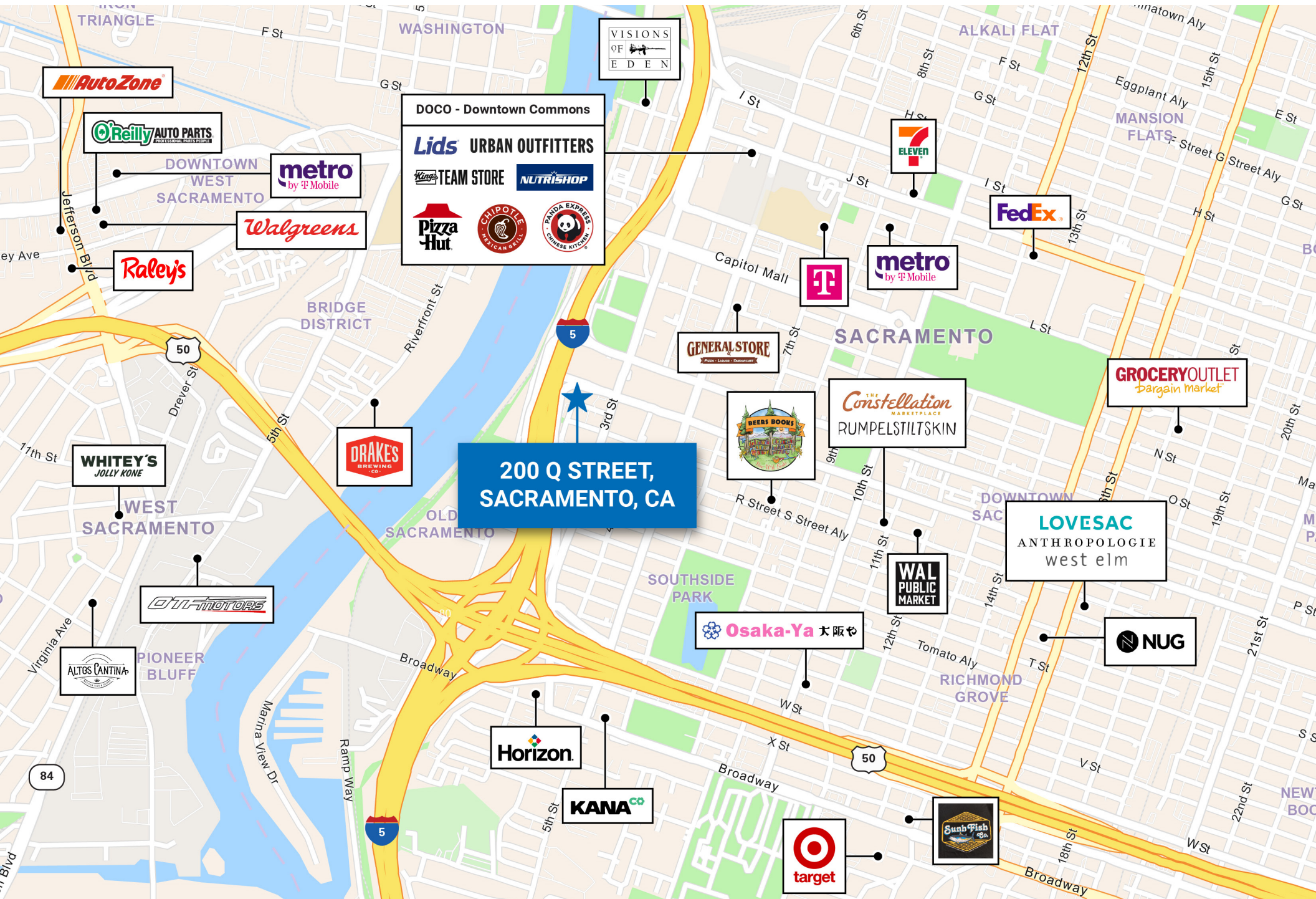


1. 9'-0" T-BAR CEILING W/ INSULATION ABOVE T-BAR.
2. NEW DUAL PANE GLASS FROM FLOOR TO 7'-0" HIGH.
3. EXISTING HARD LID AT 12'-0".
4. NEW 2X6 METAL STUD WALL W/ GYP.BD. ON THE INSIDE AND STUCCO ON THE OUTSIDE.
5. EXISTING CMU BLOCK WALL.
6. NEW 2X4 METAL STUD WALL OVER EXISTING METAL WALL.
7. NEW 9'-0" T-BAR CEILING W/ INSULATION ABOVE T-BAR..
8. NEW 8'-0" HARD LID.
9. EXISTING HARD LID.
10. UNCONDITIONED SPACE.

\$2.50/SF/NNN

NEWMARK

LOCATION, LOCATION, LOCATION



200 Q STREET

Sacramento, CA 95811

CHANDLER EDEN

t 916.569.2380
Chandler.Eden@nrmk.com
CA RE License #02081848

ALI NADIMI

t 916.569.2355
Ali.Nadimi@nrmk.com
CA RE License #01723313



NEWMARK

The distributor of this communication is performing acts for which a real estate license is required. The information contained herein has been obtained from sources deemed reliable but has not been verified and no guarantee, warranty or representation, either express or implied, is made with respect to such information. Terms of sale or lease and availability are subject to change or withdrawal without notice. • 5/2026