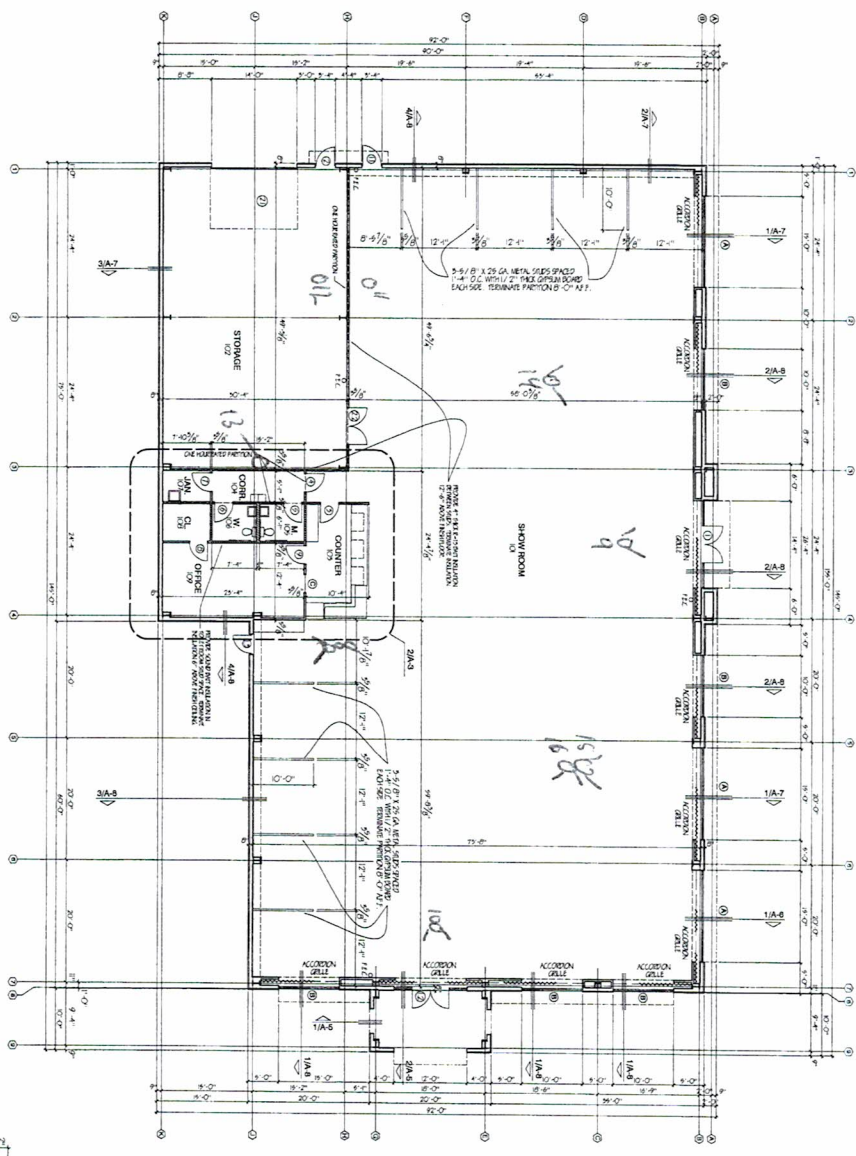


8
9
10
11
12
13
14
15
16



1 FLOOR PLAN
SCALE 1/8" = 1'-0"



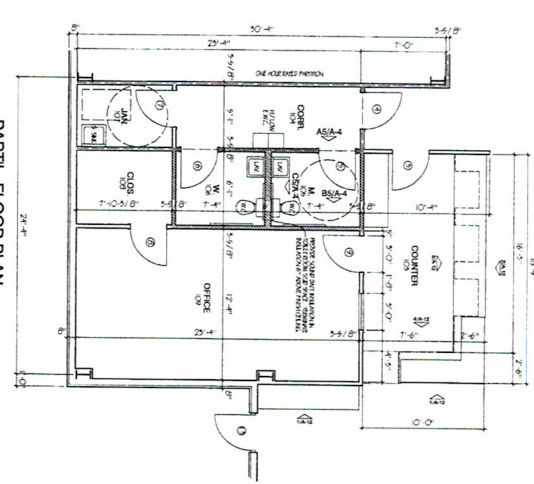
DOOR/FRAMES: 3/4" x 7 1/2" S&W ALUMINUM
 1 1/2" x 6 1/2" S&W ALUMINUM
 1 1/2" x 6 1/2" S&W ALUMINUM
 1 1/2" x 6 1/2" S&W ALUMINUM
 1 1/2" x 6 1/2" S&W ALUMINUM

DOOR NO.	TYPE	MATERIAL	LABELLED	FRAME		REMARKS
				LEAF NOMINAL SIZE	MATERIAL LABELLED TYPE	
1		1/2" GA. INSULATED YELLOW PLY		1 1/2" x 6 1/2"	3/4" S&W ALUMINUM	
2		SOLID CORE WOOD		1 1/2" x 6 1/2"	3/4" S&W ALUMINUM	
3		1/2" HE. SP. LABEL		1 1/2" x 6 1/2"	3/4" S&W ALUMINUM	
4		HE. SP. LABEL		1 1/2" x 6 1/2"	3/4" S&W ALUMINUM	
5		5/8" HE. C. LABEL		1 1/2" x 6 1/2"	3/4" S&W ALUMINUM	
6		20 MIL LABEL		1 1/2" x 6 1/2"	3/4" S&W ALUMINUM	
7		20 MIL LABEL		1 1/2" x 6 1/2"	3/4" S&W ALUMINUM	
8		1/2" GA. INSULATED YELLOW PLY		1 1/2" x 6 1/2"	3/4" S&W ALUMINUM	
9		GLASS & ALUMINUM		1 1/2" x 6 1/2"	3/4" S&W ALUMINUM	
10		GLASS & ALUMINUM		1 1/2" x 6 1/2"	3/4" S&W ALUMINUM	
11		GLASS & ALUMINUM		1 1/2" x 6 1/2"	3/4" S&W ALUMINUM	
12		GLASS & ALUMINUM		1 1/2" x 6 1/2"	3/4" S&W ALUMINUM	
13		GLASS & ALUMINUM		1 1/2" x 6 1/2"	3/4" S&W ALUMINUM	
14		GLASS & ALUMINUM		1 1/2" x 6 1/2"	3/4" S&W ALUMINUM	
15		GLASS & ALUMINUM		1 1/2" x 6 1/2"	3/4" S&W ALUMINUM	
16		GLASS & ALUMINUM		1 1/2" x 6 1/2"	3/4" S&W ALUMINUM	
17		GLASS & ALUMINUM		1 1/2" x 6 1/2"	3/4" S&W ALUMINUM	
18		GLASS & ALUMINUM		1 1/2" x 6 1/2"	3/4" S&W ALUMINUM	
19		GLASS & ALUMINUM		1 1/2" x 6 1/2"	3/4" S&W ALUMINUM	
20		GLASS & ALUMINUM		1 1/2" x 6 1/2"	3/4" S&W ALUMINUM	
21		GLASS & ALUMINUM		1 1/2" x 6 1/2"	3/4" S&W ALUMINUM	
22		GLASS & ALUMINUM		1 1/2" x 6 1/2"	3/4" S&W ALUMINUM	
23		GLASS & ALUMINUM		1 1/2" x 6 1/2"	3/4" S&W ALUMINUM	
24		GLASS & ALUMINUM		1 1/2" x 6 1/2"	3/4" S&W ALUMINUM	
25		GLASS & ALUMINUM		1 1/2" x 6 1/2"	3/4" S&W ALUMINUM	
26		GLASS & ALUMINUM		1 1/2" x 6 1/2"	3/4" S&W ALUMINUM	
27		GLASS & ALUMINUM		1 1/2" x 6 1/2"	3/4" S&W ALUMINUM	
28		GLASS & ALUMINUM		1 1/2" x 6 1/2"	3/4" S&W ALUMINUM	
29		GLASS & ALUMINUM		1 1/2" x 6 1/2"	3/4" S&W ALUMINUM	
30		GLASS & ALUMINUM		1 1/2" x 6 1/2"	3/4" S&W ALUMINUM	

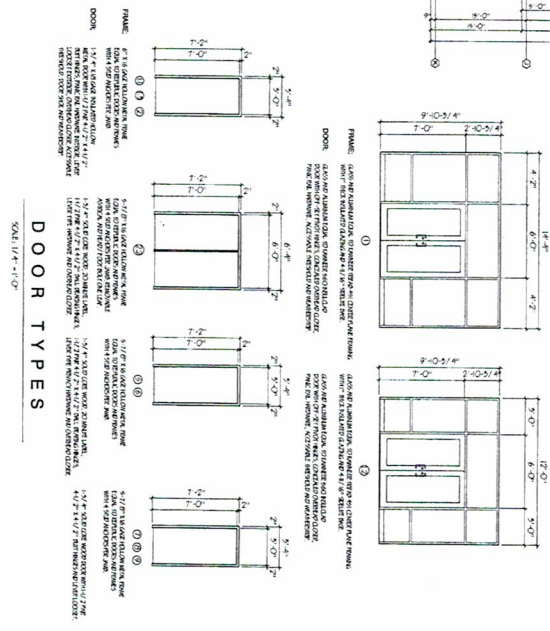
FINISHES

- FLOORING:
 - 1. POLISHED CONCRETE
 - 2. POLISHED CONCRETE
 - 3. POLISHED CONCRETE
 - 4. POLISHED CONCRETE
 - 5. POLISHED CONCRETE
 - 6. POLISHED CONCRETE
 - 7. POLISHED CONCRETE
 - 8. POLISHED CONCRETE
 - 9. POLISHED CONCRETE
 - 10. POLISHED CONCRETE
 - 11. POLISHED CONCRETE
 - 12. POLISHED CONCRETE
 - 13. POLISHED CONCRETE
 - 14. POLISHED CONCRETE
 - 15. POLISHED CONCRETE
 - 16. POLISHED CONCRETE
 - 17. POLISHED CONCRETE
 - 18. POLISHED CONCRETE
 - 19. POLISHED CONCRETE
 - 20. POLISHED CONCRETE
 - 21. POLISHED CONCRETE
 - 22. POLISHED CONCRETE
 - 23. POLISHED CONCRETE
 - 24. POLISHED CONCRETE
 - 25. POLISHED CONCRETE
 - 26. POLISHED CONCRETE
 - 27. POLISHED CONCRETE
 - 28. POLISHED CONCRETE
 - 29. POLISHED CONCRETE
 - 30. POLISHED CONCRETE
- WALLS:
 - 1. POLISHED CONCRETE
 - 2. POLISHED CONCRETE
 - 3. POLISHED CONCRETE
 - 4. POLISHED CONCRETE
 - 5. POLISHED CONCRETE
 - 6. POLISHED CONCRETE
 - 7. POLISHED CONCRETE
 - 8. POLISHED CONCRETE
 - 9. POLISHED CONCRETE
 - 10. POLISHED CONCRETE
 - 11. POLISHED CONCRETE
 - 12. POLISHED CONCRETE
 - 13. POLISHED CONCRETE
 - 14. POLISHED CONCRETE
 - 15. POLISHED CONCRETE
 - 16. POLISHED CONCRETE
 - 17. POLISHED CONCRETE
 - 18. POLISHED CONCRETE
 - 19. POLISHED CONCRETE
 - 20. POLISHED CONCRETE
 - 21. POLISHED CONCRETE
 - 22. POLISHED CONCRETE
 - 23. POLISHED CONCRETE
 - 24. POLISHED CONCRETE
 - 25. POLISHED CONCRETE
 - 26. POLISHED CONCRETE
 - 27. POLISHED CONCRETE
 - 28. POLISHED CONCRETE
 - 29. POLISHED CONCRETE
 - 30. POLISHED CONCRETE
- CEILING:
 - 1. POLISHED CONCRETE
 - 2. POLISHED CONCRETE
 - 3. POLISHED CONCRETE
 - 4. POLISHED CONCRETE
 - 5. POLISHED CONCRETE
 - 6. POLISHED CONCRETE
 - 7. POLISHED CONCRETE
 - 8. POLISHED CONCRETE
 - 9. POLISHED CONCRETE
 - 10. POLISHED CONCRETE
 - 11. POLISHED CONCRETE
 - 12. POLISHED CONCRETE
 - 13. POLISHED CONCRETE
 - 14. POLISHED CONCRETE
 - 15. POLISHED CONCRETE
 - 16. POLISHED CONCRETE
 - 17. POLISHED CONCRETE
 - 18. POLISHED CONCRETE
 - 19. POLISHED CONCRETE
 - 20. POLISHED CONCRETE
 - 21. POLISHED CONCRETE
 - 22. POLISHED CONCRETE
 - 23. POLISHED CONCRETE
 - 24. POLISHED CONCRETE
 - 25. POLISHED CONCRETE
 - 26. POLISHED CONCRETE
 - 27. POLISHED CONCRETE
 - 28. POLISHED CONCRETE
 - 29. POLISHED CONCRETE
 - 30. POLISHED CONCRETE

2 PARTL. FLOOR PLAN
SCALE 1/4" = 1'-0"



DOOR TYPES



ROOM FINISH SCHEDULE

ROOM NO.	DESCRIPTION	WALLS			FLOOR	CEILING	DOOR	REMARKS
		N	E	W				
101	SHOW ROOM	30	30	30	10	10		
102	OFFICE	30	30	30	10	10		
103	STORAGE	30	30	30	10	10		
104	COUNTER	30	30	30	10	10		
105	OFFICE	30	30	30	10	10		
106	STORAGE	30	30	30	10	10		
107	OFFICE	30	30	30	10	10		
108	STORAGE	30	30	30	10	10		
109	OFFICE	30	30	30	10	10		
110	STORAGE	30	30	30	10	10		
111	OFFICE	30	30	30	10	10		
112	STORAGE	30	30	30	10	10		
113	OFFICE	30	30	30	10	10		
114	STORAGE	30	30	30	10	10		
115	OFFICE	30	30	30	10	10		
116	STORAGE	30	30	30	10	10		
117	OFFICE	30	30	30	10	10		
118	STORAGE	30	30	30	10	10		
119	OFFICE	30	30	30	10	10		
120	STORAGE	30	30	30	10	10		