

# 2

NO LASALLE

# Two for the show

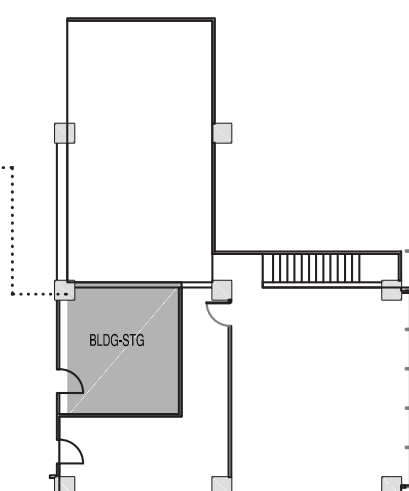
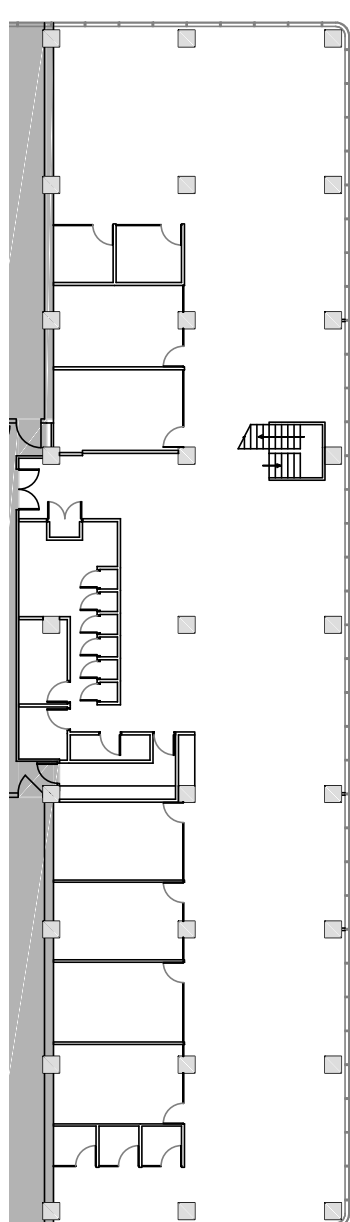
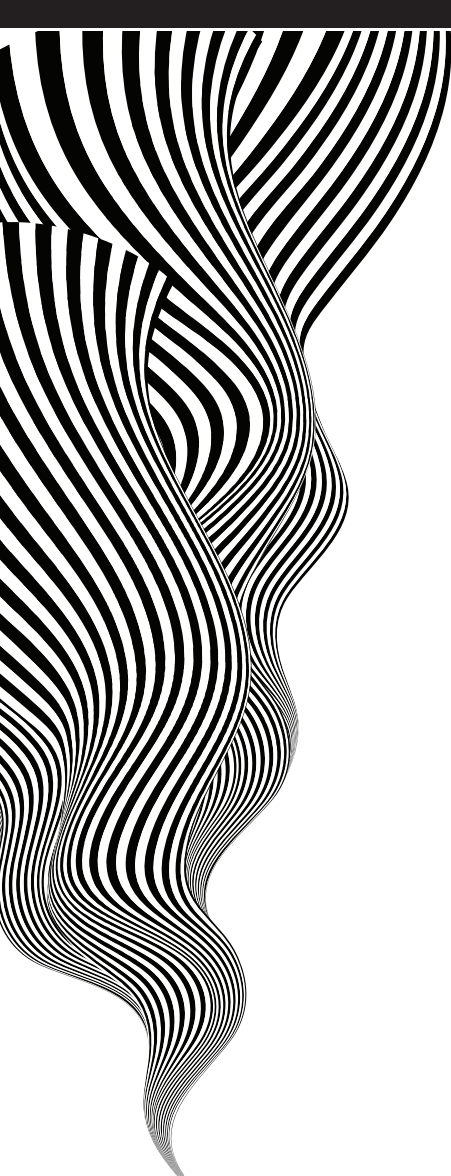


## It's ready. Let's go.

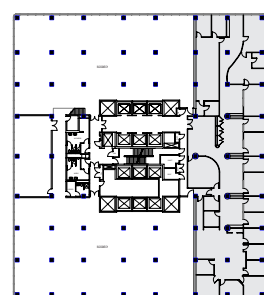
TOUR SPACE

Make a wave on LaSalle Street  
10,374 RSF Available on Two Floors

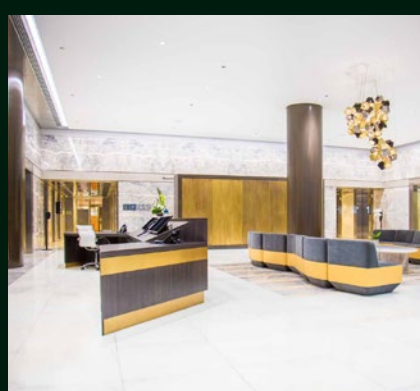
- Unique & creative
- Move-in ready
- Unbeatable views
- Two story space
- Lofted addition



SUITE 1500  
1,470 SF



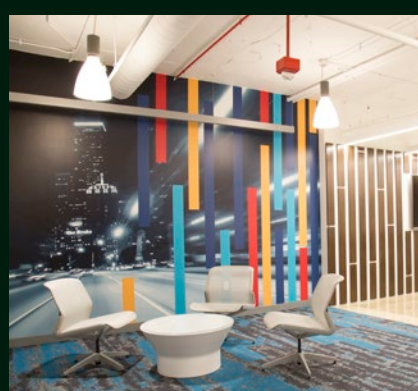
DOWNLOAD FLOORPLAN



TOUR LOBBY



TOUR FITNESS CENTER



TOUR TENANT LOUNGE

## Two for the show.



MICHAEL CURRAN | Managing Director  
(t) 312-228-2079 | (c) 773-415-3760

ANNIE NICOLAU | Vice President Brokerage  
(t) 312-228-2061 | (c) 630-738-0928

KIM DOYLE | Vice President  
(t) 312-228-3157 | (c) 312-848-7768