



FOR LEASE

Asking Rate:

\$28.00 PSF
Modified Gross

Contact us:

Wade Smith, SIOR

Brokerage | Arkansas
+1 214 924 1605
wade.smith@ar.colliers.com

Alan W. Cole, CCIM

Principal & Executive VP | Arkansas
+1 479 644 5849
alan.cole@ar.colliers.com



3503 S 55th Street, Suite 200
Rogers, AR 72758
P: +1 479 636 9009
colliers.com/arkansas

1651 E Stearns Street

Fayetteville, Arkansas

Property Amenities

Suite 200: 2,510 square feet

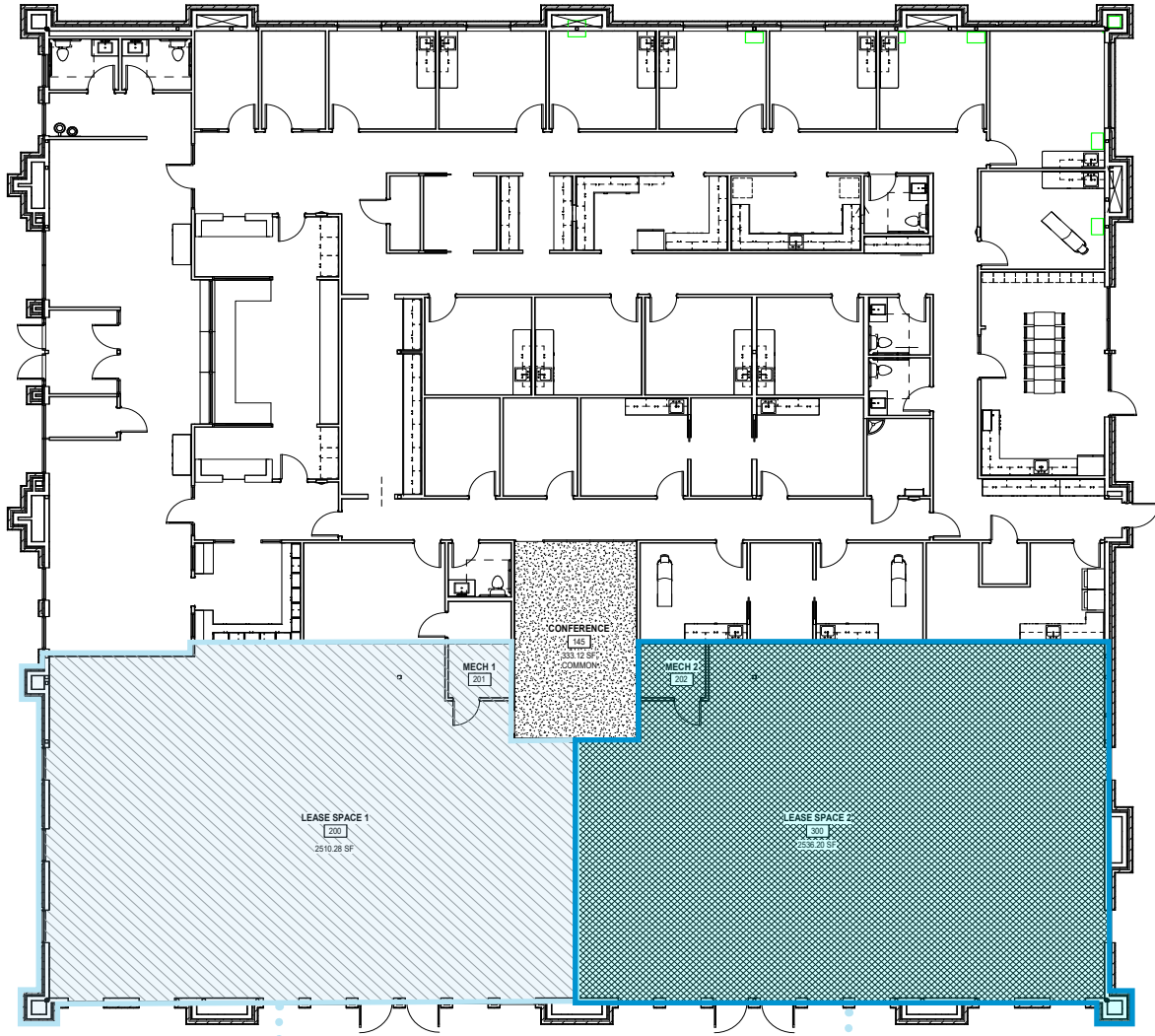
Suite 300: 2,536 square feet

- New medical office development
- Convenient to retail and high-income residential neighborhoods
- Can be combined for a total of 5,046 square feet

New construction medical office for lease anchored by Premier Dermatology located in Fayetteville's Business & Shopping District. Quick access to E Joyce Blvd, N College Avenue and Fulbright Expressway and surrounded by dense residential neighborhoods and multifamily developments. Nearby retail includes several big box stores, Starbucks, Walmart and the Northwest Arkansas Mall.

Copyright © 2021 Colliers International.

Information herein has been obtained from sources deemed reliable, however its accuracy cannot be guaranteed. The user is required to conduct their own due diligence and verification.

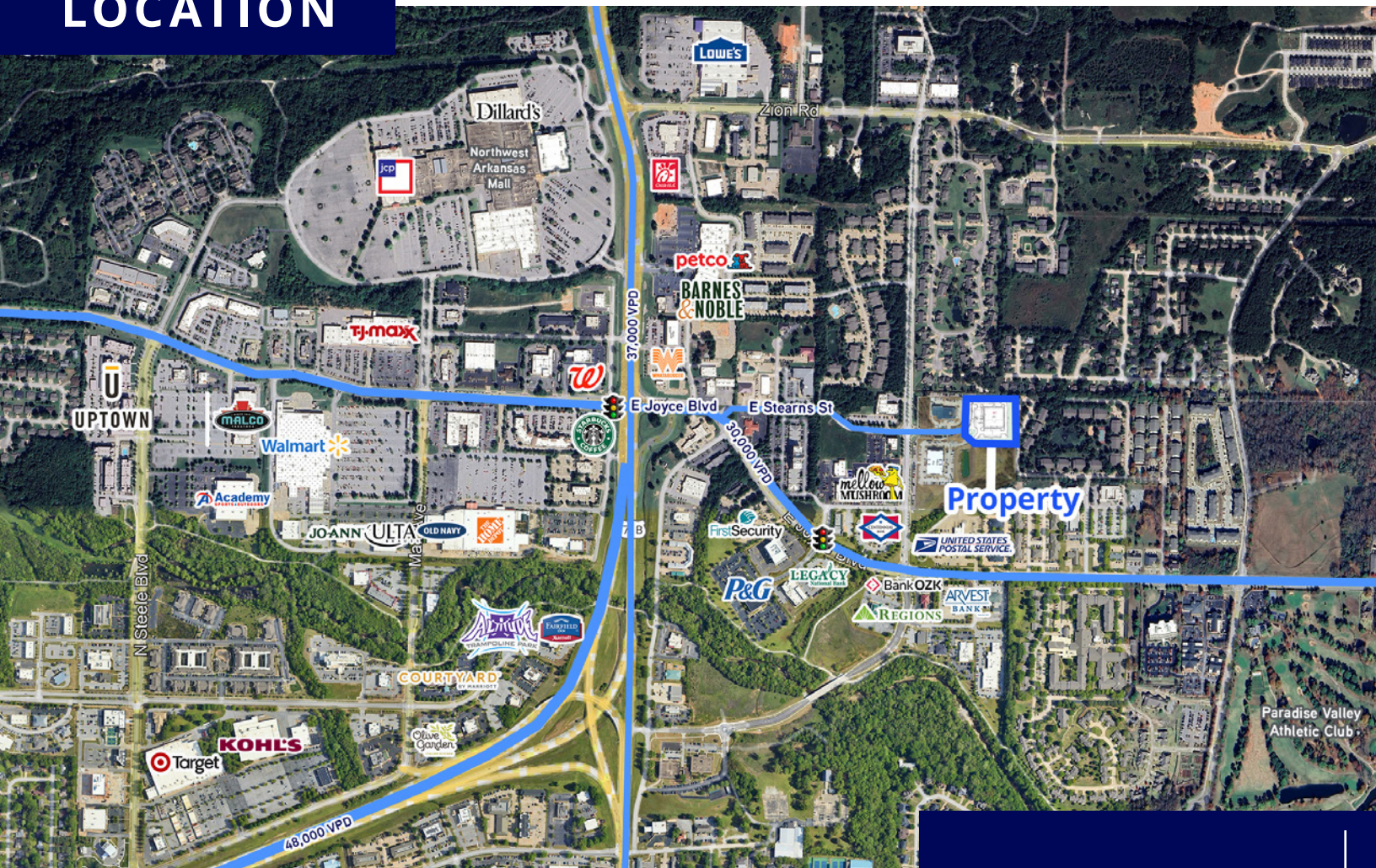


Suite 200
2,510 SF

Suite 300
2,536 SF



LOCATION



Surrounded by neighborhoods, retail & restaurant



Medical office building with anchor tenant Premier Dermatology



Quick access to N College & Fulbright Expressway

Demographics

	1 Mile	3 Mile	5 Mile
Population (2024)	5,117	47,209	135,336
Projected Population (2029)	5,551	49,686	142,122
Average HH Income (2024)	\$91,087	\$100,573	\$86,297
Proj. Average HH Income (2029)	\$102,496	\$115,353	\$99,254
Households (2024)	2,641	19,805	51,082

Copyright © 2021 Colliers International.

Information herein has been obtained from sources deemed reliable, however its accuracy cannot be guaranteed. The user is required to conduct their own due diligence and verification.

Contact us:

Wade Smith, SIOR

Brokerage | Arkansas
+1 214 924 1605
wade.smith@ar.colliers.com

Alan W. Cole, CCIM

Principal & Executive VP | Arkansas
+1 479 644 5849
alan.cole@ar.colliers.com



3503 S 55th Street, Suite 200
Rogers, AR 72758
P: +1 479 636 9000
colliers.com/arkansas