



For Sublease

Site features:

- Building:** 660 Oak Harbor Blvd.
Slidell, LA
- Property Type:** Class A Office Building
- Space:** Approximately 3,238 RSF located on the 2nd floor (elevator served).
- Rental Rate:** \$15.00 per RSF per year with \$0.50 per RSF annual increases, Modified Gross
- Operating Expenses & Taxes:** Included in Rental Rate, except that utilities and janitorial service are the responsibility of subtenant.
- Remaining Term:** Through July 31, 2028

Highlights:

- Excellent condition with upgraded finishes
- 7 private offices
- 6 workstations
- 1 kitchen/breakroom
- 2 conference rooms
- Crown Signage Available
- Abundant Parking
- Suite entrance just steps away from the elevator
- Excellent access to I-10

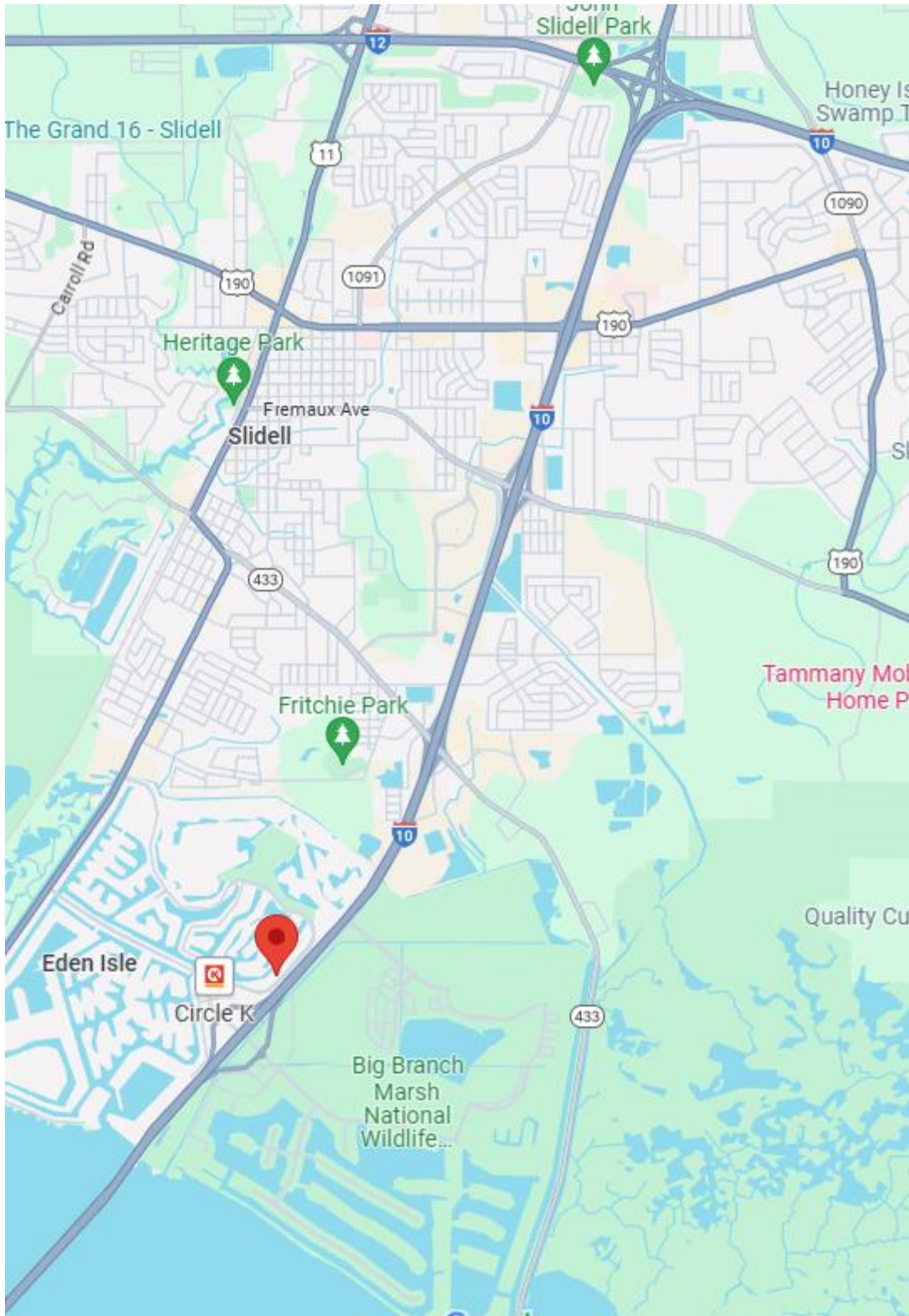
**660 Oak Harbor Blvd.
Slidell, LA**

**Jones Lang LaSalle
Greg Riera**
+1 504 585 2670
greg.riera@jll.com



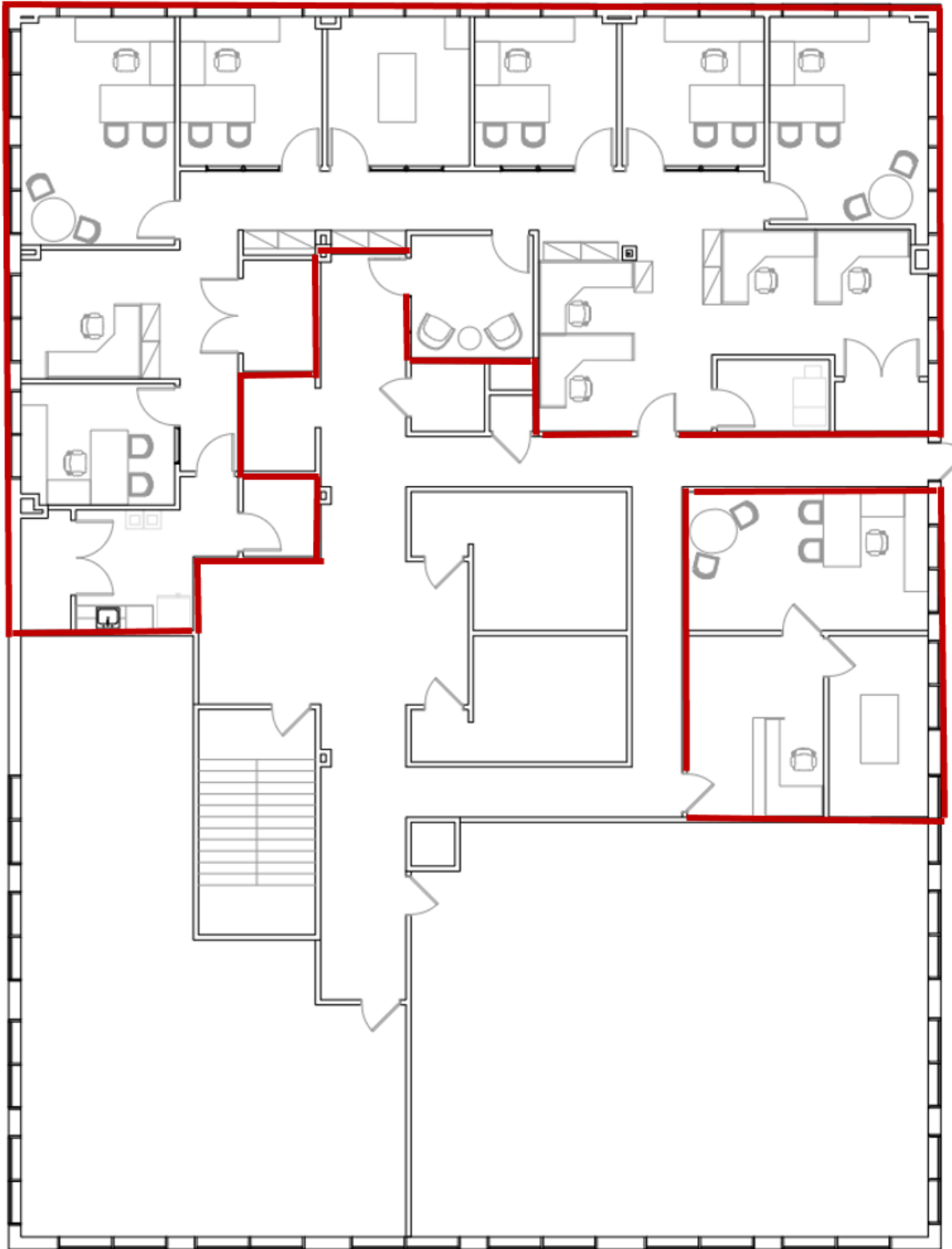
For Sublease

3,238 RSF Available for Sublease
660 Oak Harbor Blvd., Slidell, LA



For Sublease

3,238 RSF Available for Sublease
660 Oak Harbor Blvd., Slidell, LA



For Sublease

3,238 RSF Available for Sublease
660 Oak Harbor Blvd., Slidell, LA



For Sublease

3,238 RSF Available for Sublease
660 Oak Harbor Blvd., Slidell, LA



For Sublease

3,238 RSF Available for Sublease
660 Oak Harbor Blvd., Slidell, LA

