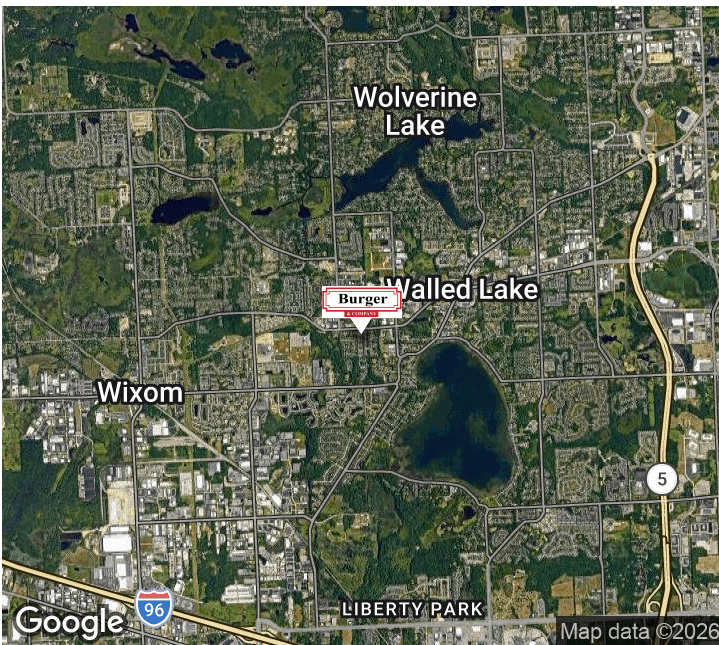




# FOR SALE

1400 West Maple Road  
Walled Lake, MI 48390  
3.62 Acres



- Growing Area With Exceptional Overall Appreciation And Fantastic Upside Potential!
- Approximately 2 Buildable Acres Of Prime Industrial Real Estate With Around 400' Of Main Road Frontage Along West Maple Rd.
- Excellent Lot Access With Two Existing Curb Cuts Located On Comwall Park Dr.
- Sale Price: \$450,000.00



For More Information Please Contact:

**John O'Brien**  
Principal  
Cell: 248.342.8383  
john@burgercollc.com

248.536.2888  
www.burgercollc.com  
38345 W. 10 Mile Road Suite 100  
Farmington Hills, MI 48335

# FOR SALE

1400 West Maple Road  
Walled Lake, MI 48390



## LAND SPECIFICATIONS

<b>Location</b>	Between Ladd & Benstein	<b>Zoning</b>	Industrial Land
<b>County</b>	Oakland	<b>Lot Size</b>	3.62 Acres
<b>Gas</b>	Yes	<b>Electric</b>	Yes
<b>City Water</b>	Yes	<b>Sewer</b>	Yes

### DESCRIPTION

- Growing area with exceptional overall appreciation and fantastic upside potential!
- Approximately 2 buildable acres of prime industrial real estate with around 400' of main road frontage along West Maple Rd.
- Excellent lot access with two existing curb cuts located on Comwall Park Dr.

**Sale Price** \$450,000.00

**Burger**

& COMPANY

*For More Information Please Contact:*

**John O'Brien**

Principal

Cell: 248.342.8383

john@burgercollc.com

248.536.2888

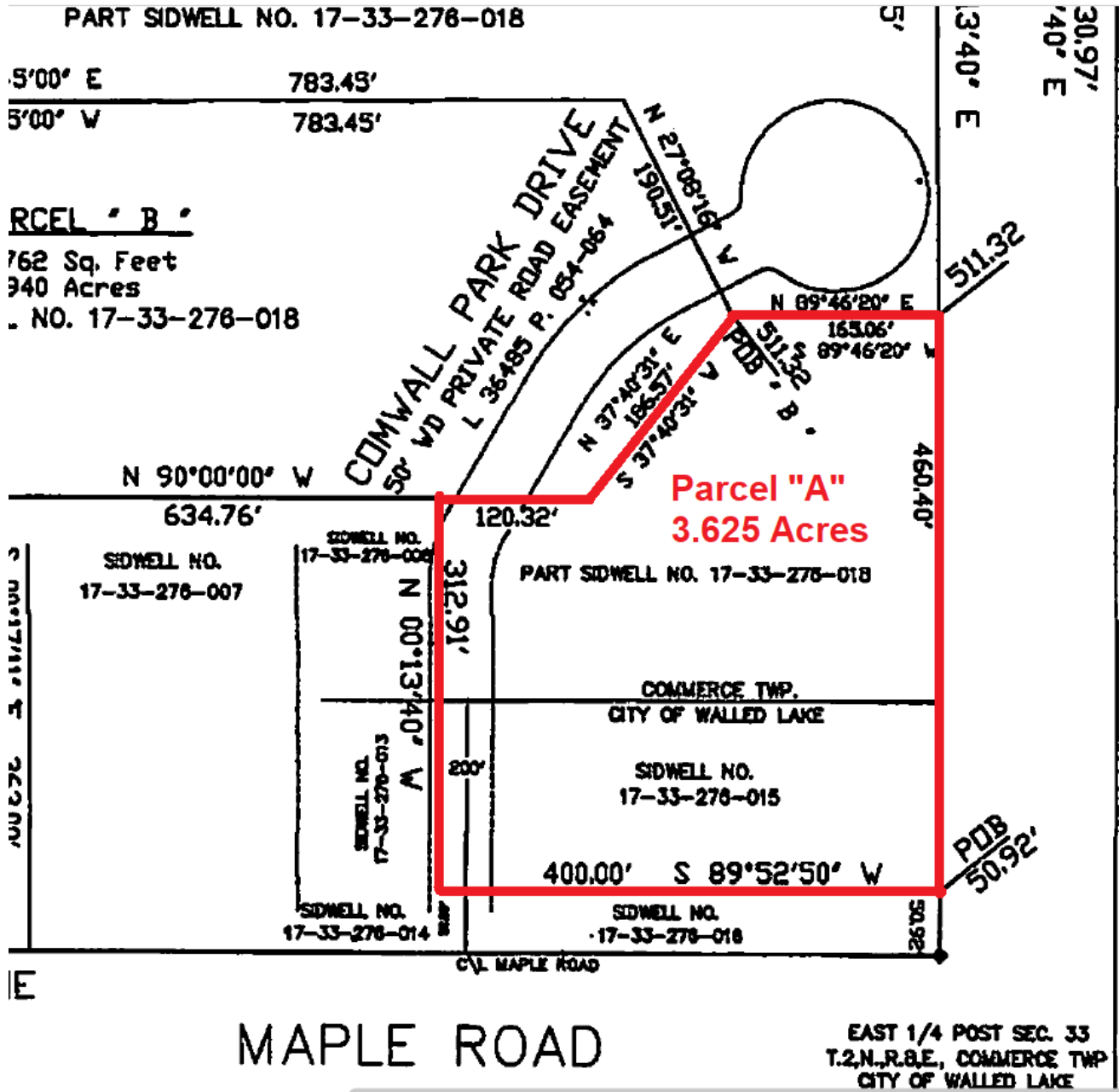
www.burgercollc.com

38345 W. 10 Mile Road Suite 100  
Farmington Hills, MI 48335

# FOR SALE

1400 West Maple Road  
Walled Lake, MI 48390

## ADDITIONAL PHOTOS



For More Information Please Contact:

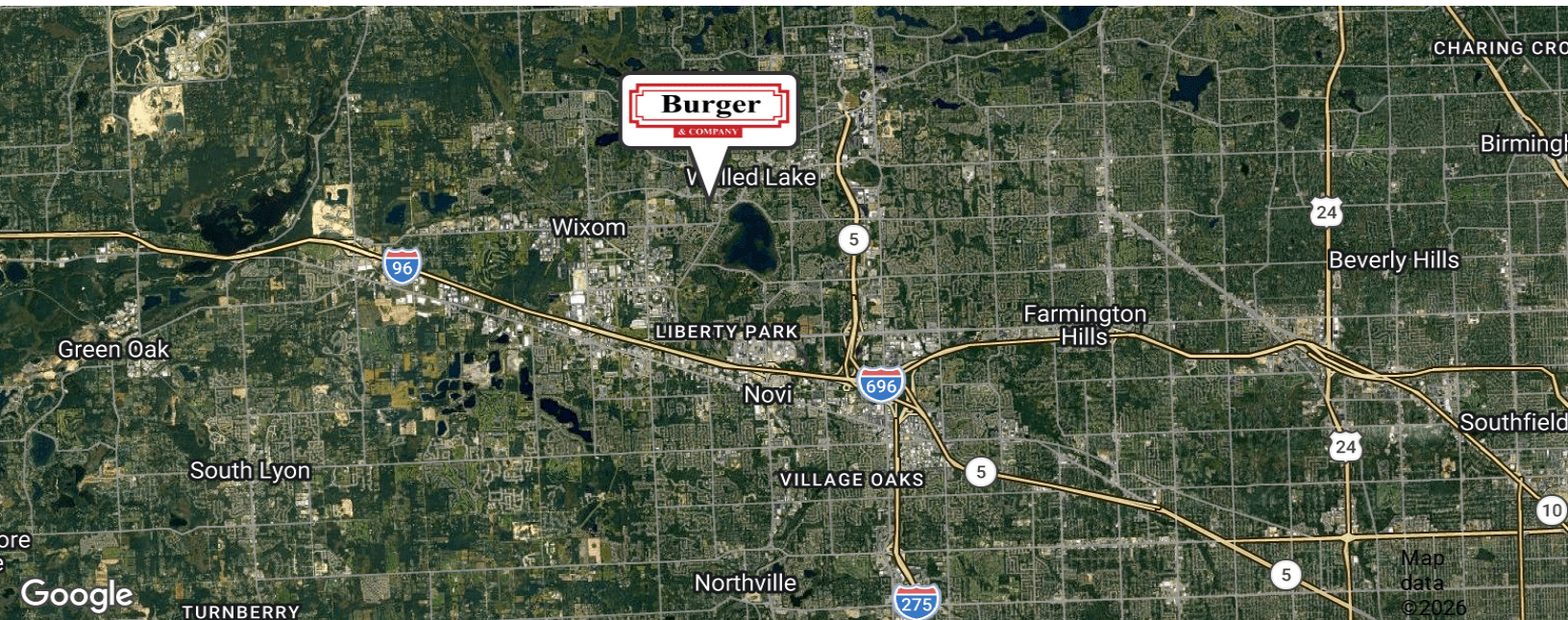
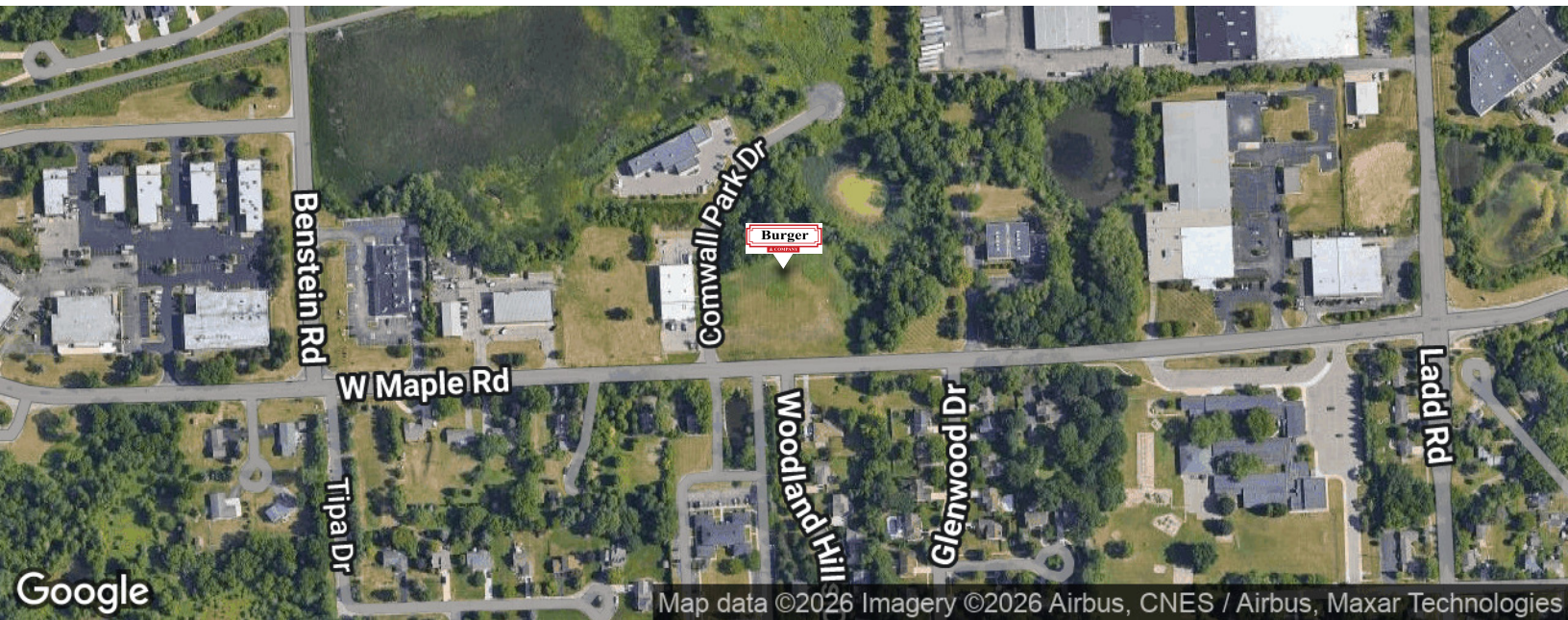
**John O'Brien**  
Principal  
Cell: 248.342.8383  
john@burgercollc.com

248.536.2888  
www.burgercollc.com  
38345 W. 10 Mile Road Suite 100  
Farmington Hills, MI 48335

# FOR SALE

1400 West Maple Road  
Walled Lake, MI 48390

## LOCATION MAP



For More Information Please Contact:

**John O'Brien**  
Principal  
Cell: 248.342.8383  
john@burgercollc.com

248.536.2888  
www.burgercollc.com  
38345 W. 10 Mile Road Suite 100  
Farmington Hills, MI 48335