



FOR LEASE

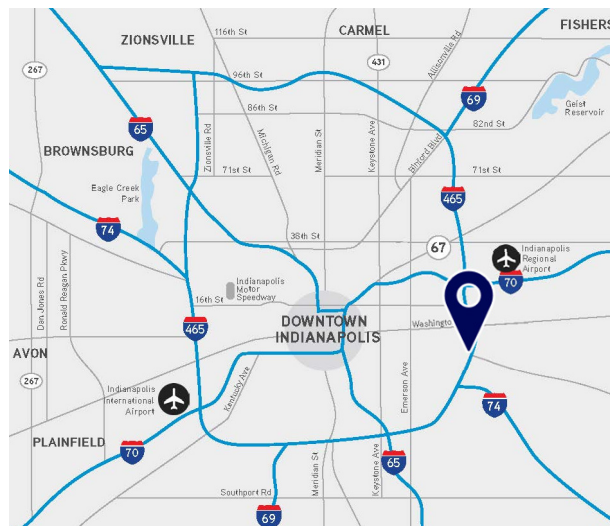
Lincoln Business Park

Indianapolis, IN

7 Industrial buildings located on the East side of Indianapolis

Property Highlights:

- Dock + drive-in loading
- Excellent interstate access
- Property under new ownership + management
- Multiple units & SF available



Tony Hupp
 +1 317 713 2116
 tony.hupp@colliers.com

Ryan Kelly
 +1 317 713 2118
 ryan.kelly@colliers.com

colliers.com



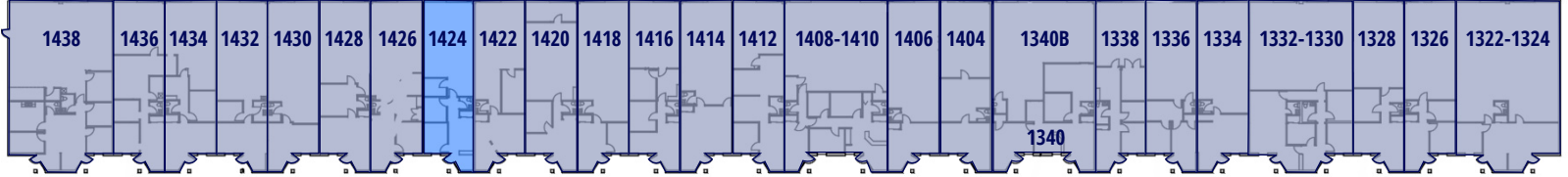
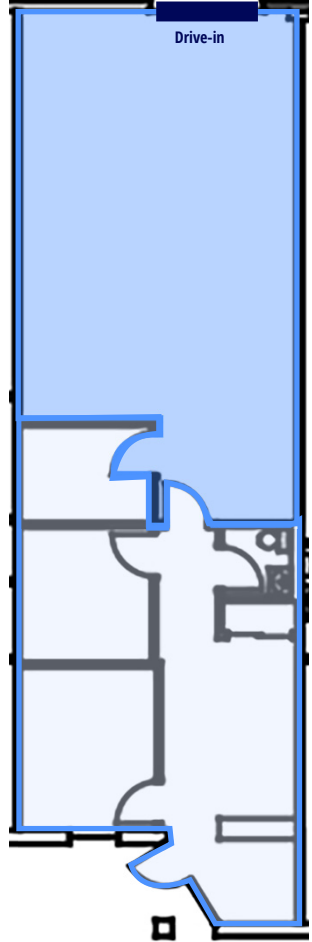
1322 – 1438 Sadler Cir E Dr

1424 Sadler Circle E




- Warehouse
- Office

SUITE SPECS

Available SF	1,200 SF
Office SF	600 SF
Clear Height	14'
Drive-in	(1) 10' x 10'
Rate PSF	\$13.00 / SF IG
Available	08/01/2026

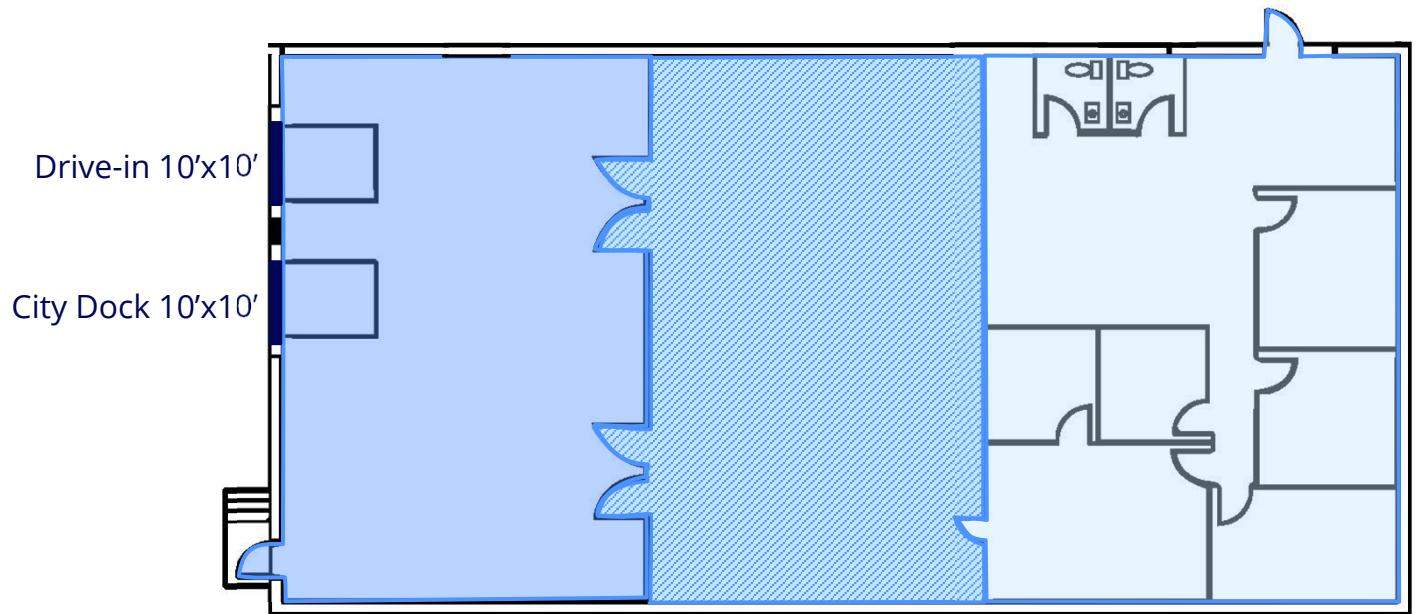


Suite 1402 | Floorplan

-  Office
-  Warehouse
-  Can be converted to warehouse

SUITE 1402 SPECS

Available SF	± 5,000
Office SF	± 3,000 (Can be reduced)
Clear Height	15'
Drive-in	1 (10'x10')
City Dock	1 (10'x10')
Rate PSF	\$11.00 IG
Available	1/1/2026



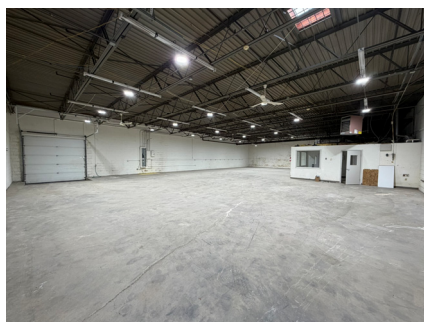
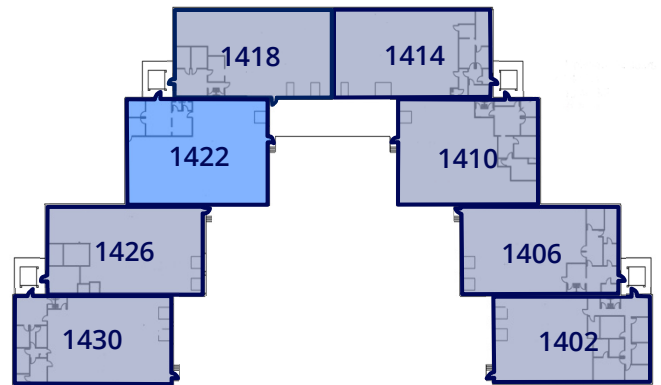
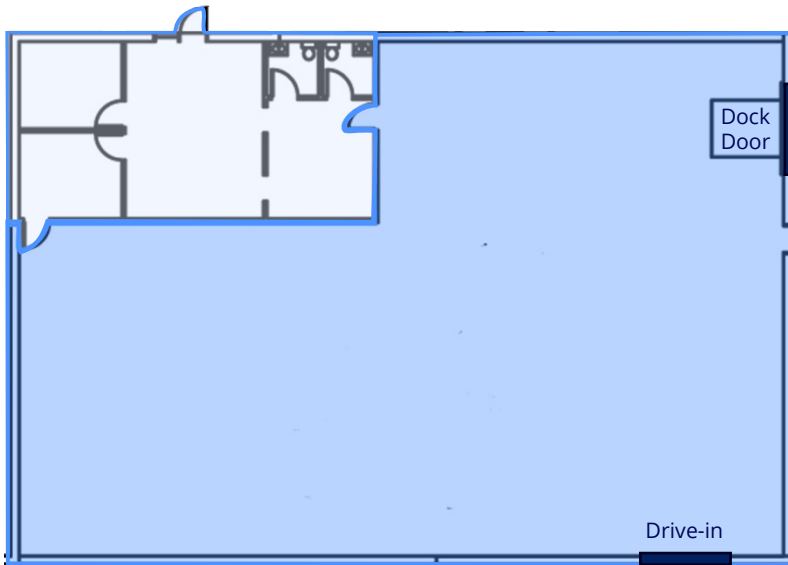
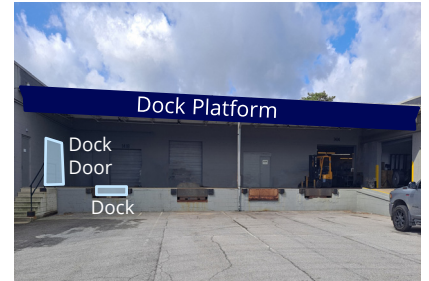


SUITE SPECS

Available SF	± 5,400
Office SF	± 1,000
Clear Height	15'
Drive-ins	1
Dock	1
Rate PSF	\$11.00 IG
Available	12/1/2025

1402-1430 Sadler Cir W Dr
1422 Sadler Circle W Dr

- Office
- Warehouse



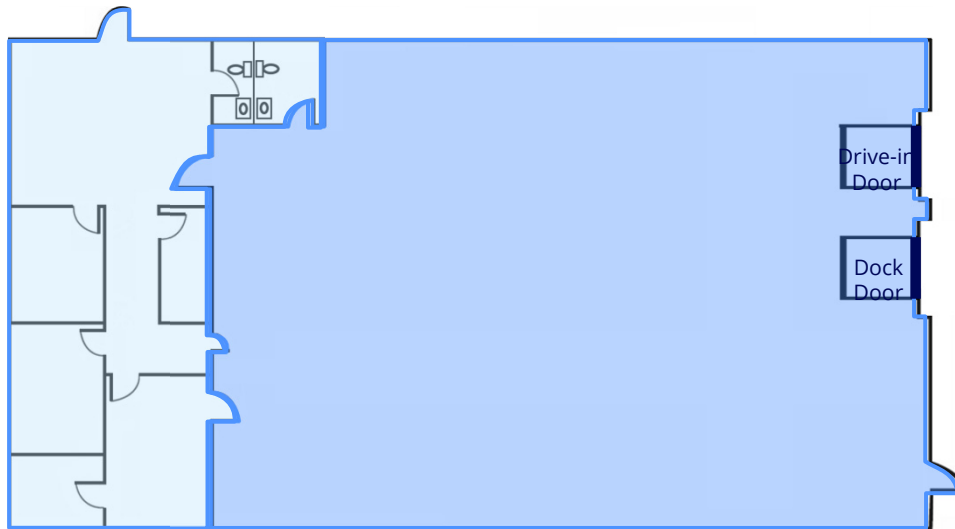


1402-1430 Sadler Cir W Dr
1430 Sadler Circle W Dr

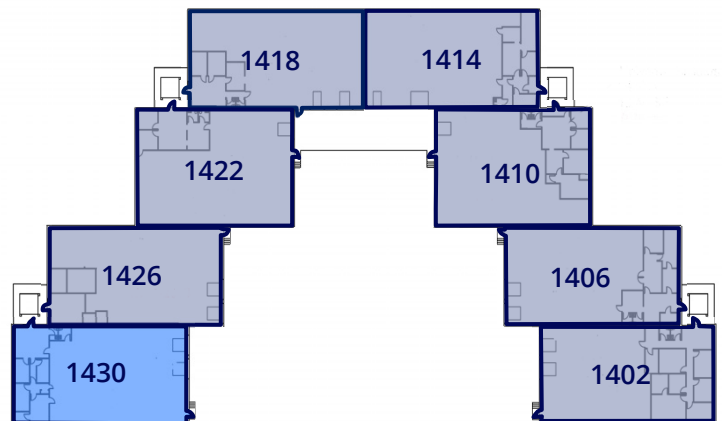


SUITE SPECS

Available SF	± 5,000
Office SF	± 1,200
Clear Height	15'
Drive-ins	1
Dock	1
Rate PSF	\$11.00 IG
Available	Within 30 days notice



- Office
- Warehouse





Park Availability

Building	Suite	Available SF	Office SF	Clear Height	Docks	Drive-ins	Rate PSF	Comments
1322 - 1438 Sadlier Cir E Dr	1340	2,400	± 1,187	14'	1	0	\$11.50 IG	• 30 day's notice
1322 - 1438 Sadlier Cir E Dr	1424	1,200	± 600	14'	0	1	\$13.00 IG	• 08/01/2026
1402-1430 Sadlier Cir W Dr	1402	5,000	± 3,000	15'	1	1	\$11.00 IG	• Available now
1402-1430 Sadlier Cir W Dr	1422	5,400	± 1,000	15'	1	1	\$11.00 IG	• Available now
1402-1430 Sadlier Cir W Dr	1430	5,000	±1,200	15'	1	1	\$11.00 IG	• Within 30 days notice

Tony Hupp
+1 317 713 2116
tony.hupp@colliers.com

Ryan Kelly
+1 317 713 2118
ryan.kelly@colliers.com