

OFFICE SPACE FOR LEASE ON U.S. 75 IN PLANO

2000 N. CENTRAL EXPRESSWAY
PLANO, TX 75074

REGAL PROPERTY GROUP

Management & Leasing

972-596-2269

SUITE 218

+/- 2,302 Sq Ft



This suite can easily be adapted to a number of use cases, including general office, professional space, light medical, or other occupancy.



- Full-service, utilities & daily janitorial included.
- Discounted ultra-high-speed Internet service available.
- Newly remodeled building.
- Move-in ready.
- 24 hour electronic access.
- Local HVAC thermostat.
- On-site property management.
- All LED “no flicker” lighting.
- Negotiable 1-5 year terms.
- Prestigious Central Expressway address.

OFFICE SPACE FOR LEASE ON U.S. 75 IN PLANO

2000 N. CENTRAL EXPRESSWAY
PLANO, TX 75074

REGAL PROPERTY GROUP

Management & Leasing

972-596-2269



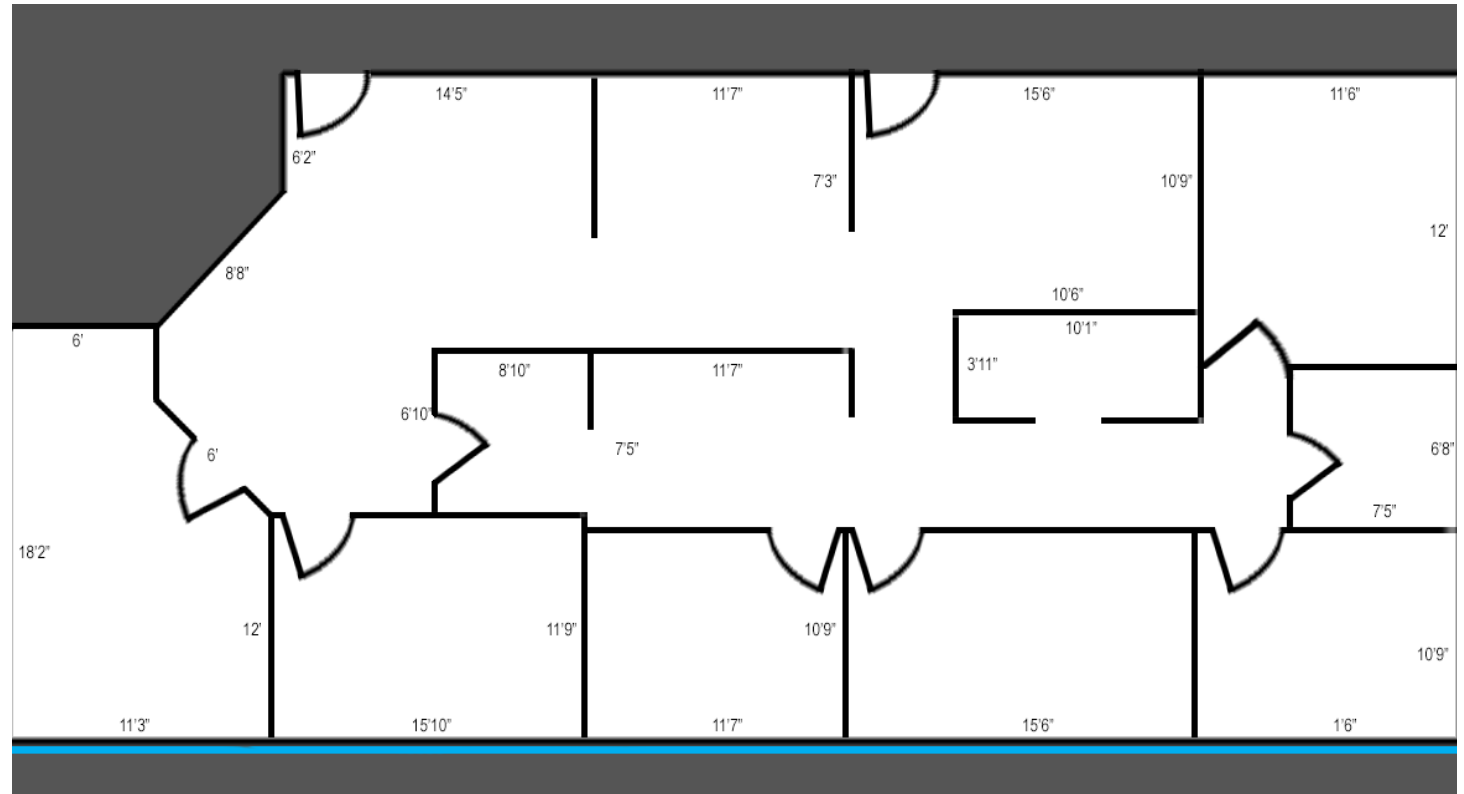
OFFICE SPACE FOR LEASE ON U.S. 75 IN PLANO

2000 N. CENTRAL EXPRESSWAY
PLANO, TX 75074

REGAL PROPERTY GROUP

Management & Leasing

972-596-2269



SUITE 218

2,302 SF

OFFICE SPACE FOR LEASE ON U.S. 75 IN PLANO

2000 N. CENTRAL EXPRESSWAY
PLANO, TX 75074

REGAL PROPERTY GROUP

Management & Leasing

972-596-2269

