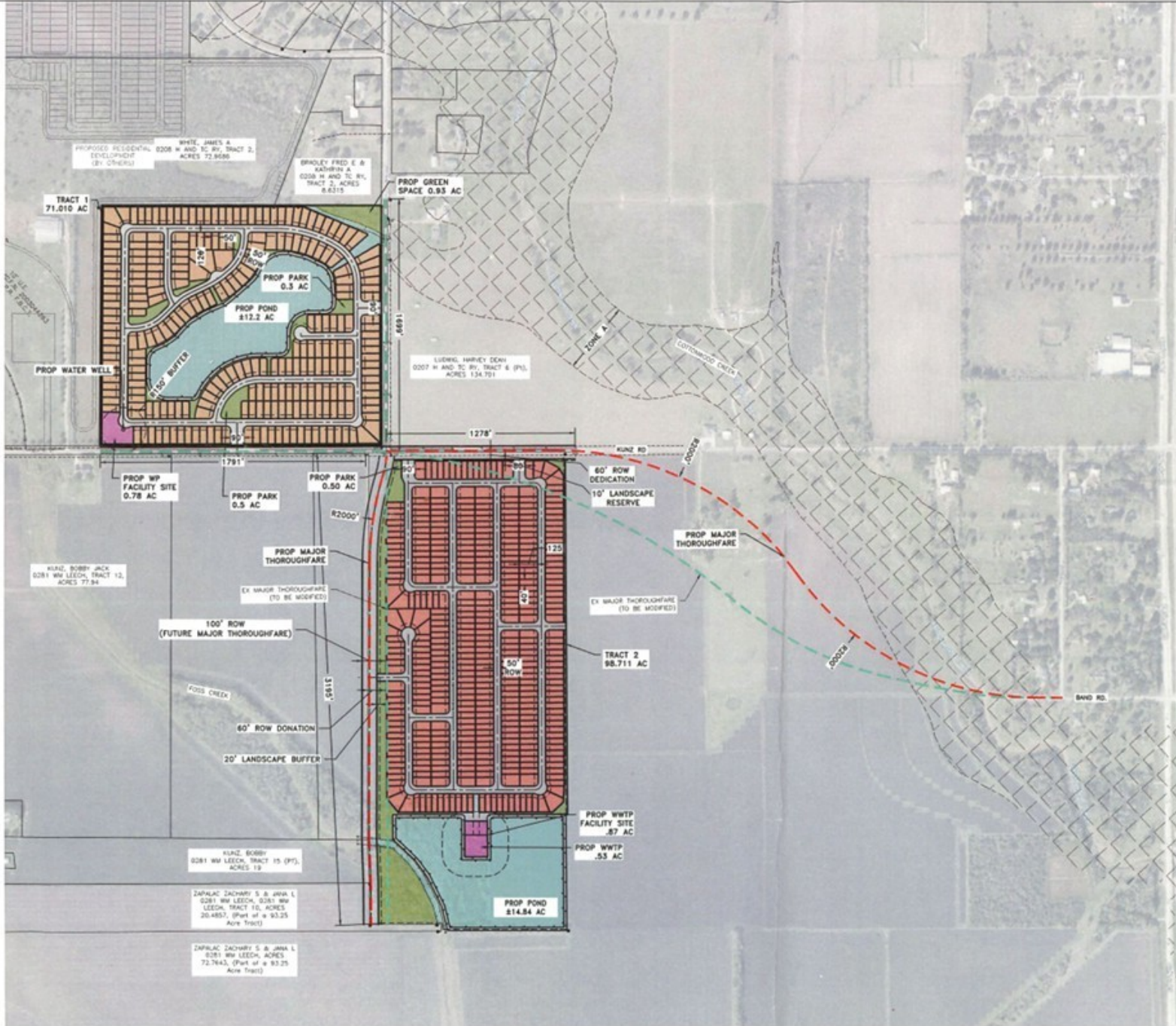


D:\E\ENGINEERING PROJECTS\ENGINEERING PROJECTS\11155 - KINZ ROAD RESIDENTIAL\03 CAD\DESIGN SET\EXHIBITS\FEASIBILITY-11155-003.LDWG Mar. 3, 2008--2:20 PM PRESTON CLARK



TOTAL SITE AREA TRACT 1 (WEST) = 71.010 AC  
 TOTAL # OF LOTS = 250  
 LOTS/AC = 3.59  
 LF STREET = 9,058 LF  
 LF STREET/LOT = 35.52

TOTAL SITE AREA TRACT 2 (EAST) = 98.711 AC  
 TOTAL # OF LOTS = 412  
 LOTS/AC = 4.17  
 LF STREET = 11,661 LF  
 LF STREET/LOT = 28.30

677 lots

- LEGEND:**
- 50'x120' LOT SIZE (255/38%)
  - 40'x125' LOT SIZE (412/61%)
  - PROP POND/DRAINAGE CHANNEL
  - PROP PARK AREA
  - WWP & WATER PLANT AREA
  - GREEN SPACE/OPEN SPACE
  - FLOODPLAIN BOUNDARIES
  - PROJECT BOUNDARY
  - EXISTING MAJOR THOROUGHFARE (PROPOSED BY FORT BEND COUNTY)
  - PROPOSED MODIFIED MAJOR THOROUGHFARE

**NOTE:**

1. DETENTION POND TO INCLUDE WALKING TRAIL BY ACCORDANCE WITH SECTION 7 OF FORT BEND COUNTY CRITERIA.
2. LAND PLAN ASSUMES DE-ANNEXATION FROM CITY OF ROSENBERG ETC.