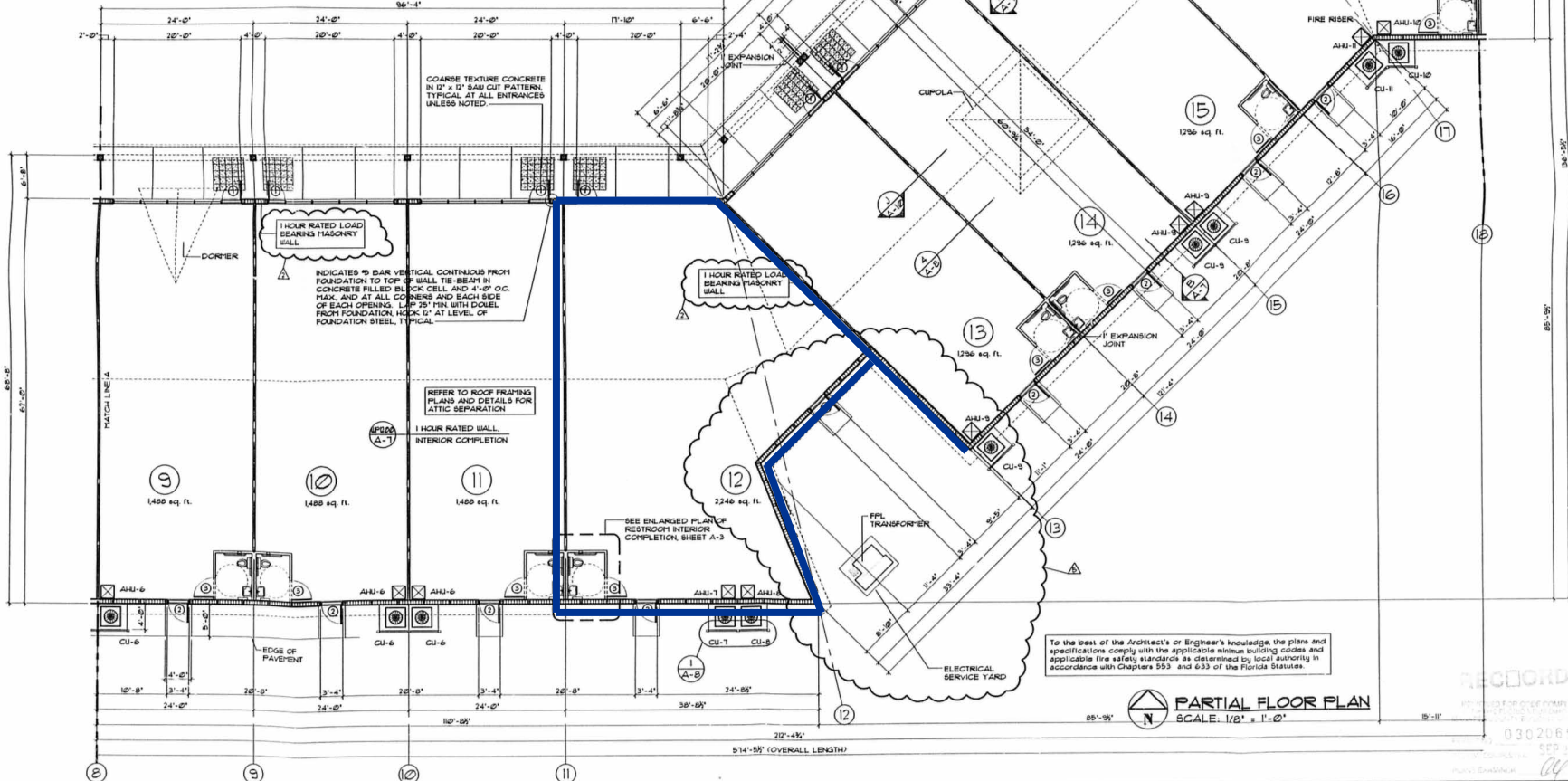


DUMPSTER PLAN
SCALE: 1/4" = 1'-0"

DUMPSTER ENCLOSURE UNDER SEPARATE PERMIT



To the best of the Architect's or Engineer's knowledge, the plans and specifications comply with the applicable minimum building codes and applicable fire safety standards as determined by local authority in accordance with Chapters 553 and 633 of the Florida Statutes.

Aug 22, 2002
PALERMO ARCHITECT, INC.
FLORIDA REGISTRATION NO. 1556

100 North Washington Boulevard,
Suite 301, Sarasota, Florida, 34236
palmarchitect.com
645.865.3777
645.854.4214 (faxable)
e-mail: galermo@palmarchitect.com

George Palermo Architect, Inc.
LICENSED ARCHITECT

PROPOSED RETAIL FACILITY
LAKE OSPREY VILLAGE
LAKE OSPREY DRIVE, SARASOTA, FLORIDA

RECEIVED
AUG 29 2002
BUILDING DEPT

FILE: 2002066
DATE: 12/11/2002
REVISION: 05/15/2003
06/13/2003
07/02/2003
07/14/2003
08/25/2003
SHEET: A-2
OF 10

RECORDS
03020659
SEP 02 2002

