



Space Profile for

Unit: #7

Area: 1917 sq ft

Address

*1377 Bass Pro Drive*

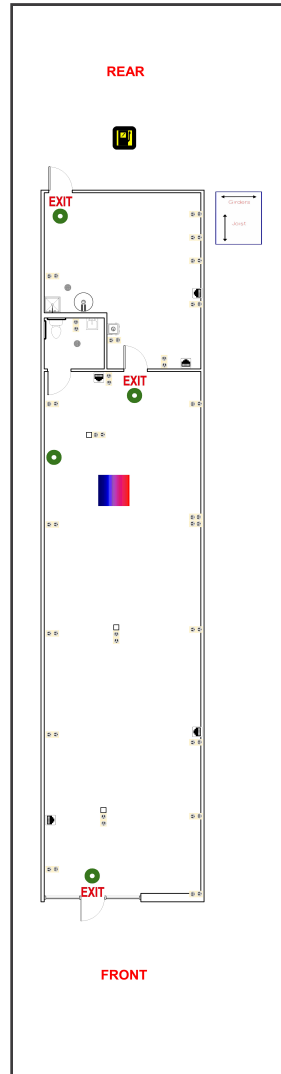
*St Charles, MO 63301*



*400 N. Tampa St., Suite 2210*

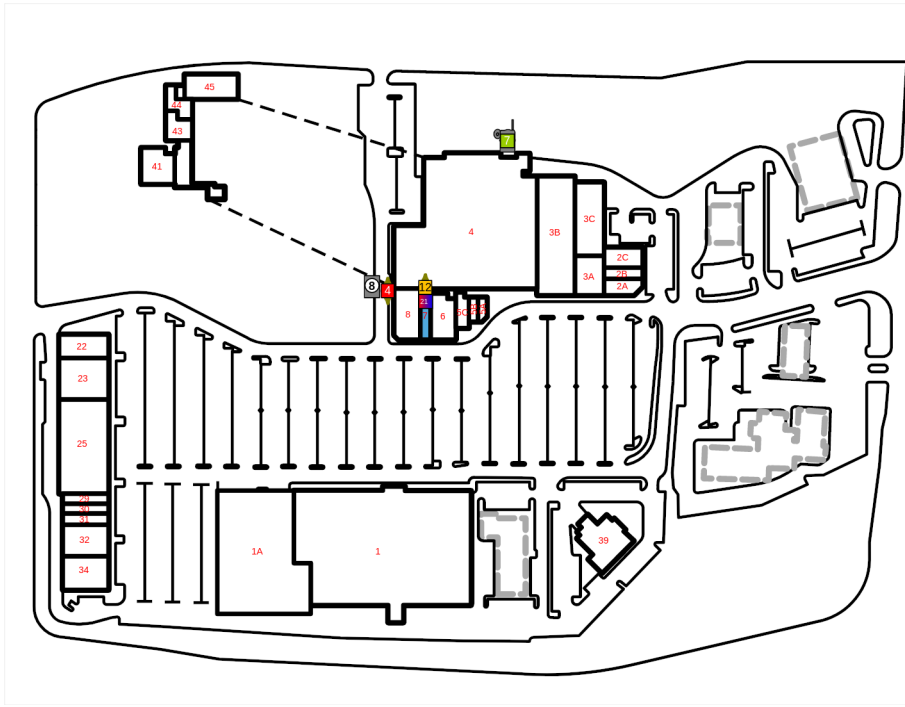
*Tampa, FL, 33602*





# Legend

	Breaker Panel		Fire Extinguisher		Ceiling Fan w/ Light		Fire Sprinkler
	Circular Column		Fire Alarm Pulldown		Rectangular Column		Pocket Door
	Appliance Outlet		Glass Door		Refrigerator		Track Lighting
	Fire Alarm		Handicap Handrail		Roll-Up Door		2-Bulb Fluorescent Lighting
	Drinking Fountain		Roof Hatch		Sink		3-Bulb Fluorescent Lighting
	Door		HVAC Unit		Swing Door		4-Bulb Fluorescent Lighting
	Double Hung Door		Recessed Light		Toilet		Ceiling Air Vent
	Electrical Outlet		Staircase		Can Light		Air Diffuser
	Emergency Light		Water Heater		Urinal		Ceiling Fan w/o Light
	EXIT Light		Telephone Panel		Thermostat		Air Handler
	Tankless Water Heater		Window Wall Opening		RJ 45		Fire Alarm Control Panel
	Step Down Transformer		Maintenance Sink		Window		Tenant Water Meter
	Disconnect		Sub Water Meter		House Gas Meter		Sub Gas Meter
	House Water Meter		Air Handler		House Electric Meter		Tenant Electric Meter
	Tenant Gas Meter						
	Sub Electric Meter						



## Space Overview

Overview	Actual Square Footage	Measured Depth of Space	Total Depth of Space	Has Stepdown Transformer
	1917 SQFT	92' 0"	92' 0"	No

Thickness	Front Wall	Rear Wall	Left Wall	Right Wall
	1' 1"	0' 6"	0' 5"	0' 5"

Flooring	Concrete	Carpet	Tile	Other	Unit	Total
		1379.92 SQFT	50.25 SQFT	402.48 SQFT	1917 SQFT	1832.65 SQFT

Ceiling Information	Height From Floor To Ceiling	Height From Floor To Bottom Of Deck	Height From Floor To Bottom Of Joist
	Front: 11' 1" Back: 11' 2"	Front: 15' 11" Back: 15' 10"	Front: 14' 4" Back: 14' 3"

Ceiling Information Cont.	Clear Ceiling Height	Height From Floor To Bottom Of Girder	Number Of Acoustical Tiles
	11' 1"		

Other Cont.	Phone Board Location	Mop Sink Location	Thermostat Location	Dmarc Distance	Are Interior Walls Full Height
					No

Other Cont.	Hazardous Materials	Loading Dock	Are Demising Walls Full Height	Changes In Demising Wall Thickness
	No	No	No	No

Mechanical

HVAC	Reference	Manufacturer	Model	Serial	Tonnage	Year	Notes
	21	CARRIER	48TFD012- - -611HQ	1304G20688	10	2004	

## Electric

Service Panel	Reference	Amps	Service Type	Panel Type	Panel UL Number	Manufacturer	Location	Notes
	1	125	277/480	A-Series II Panelboard	HL 049833	General Electric	Rear Exterior Common Hallway	

Disconnect	Reference	Amps	Location	Panel Number	Manufacturer	Notes	Handle or Breaker
	8	100	Left Side Exterior Wall Mounted	Not Listed	General Electric		Breaker

Electric Meter	Reference	Meter #	Location	Meter Reading	Read On	Voltage	Notes
	8	43951469	Left Side Exterior Wall Mounted				120-480V

*\*IDPlans does not provide an Ampacity Report\**

## Plumbing

Water Fountains	Number of Water Fountains	Location	Notes
	1	Open Space 2	

Water Heater	Reference	Manufacturer	Model	Serial	Gallons	Tankless	Water Line (in)	Location	Notes
	1		Rheem Mfg Company/RUUD Water Heater Division	PEP6-1	RU 0807601443	6	No	.5	Open Space 2

House Water Meter	Reference	Meter #	Location	Size	Notes
	4		N60442680	Left Side Exterior Ground Meter Box in Sidewalk	

Sub Water Meter	Reference	Meter #	Location	Size	Notes
		12	52683644	Rear Exterior Wall Mounted in Common Hallway	1 inch

## Waste

No assets available for this section.

Fire

Sprinkler Heads	Sprinkler Heads Present	Sprinkler Head Type	Riser Located in Space	Riser Location	Additional Information
		23	Pendent	No	Rear Exterior Riser Room

Gas

Gas Meter	Reference	Meter #	Location	Size	Notes
		7	1193485	Rear Exterior Wall Mounted	3/4 inch

Room

Restroom	Unit	Description
	Restroom 1	Unisex Restroom

# Storefront 1

