

Medical Office Space

750 Fletcher Drive Elgin, Illinois 60123

PROPERTY DETAILS

- Highly visible medical office building located across from Advocate Immediate Care Center.
- Medical Office Space available:
 - Suite 200 3,174 RSF
 - Suite 203 2,996 RSF
 - Suite 206 3,987 RSF
 - Suite 202 2,769 RSF
 - Suite 305 4,114 RSFContiguous ±12,926 RSF
- Covered patient drop-off at front and rear entrances.
- Diverse tenant base including primary care, neurology, OB/GYN, imaging and more.
- Drive-thru pharmacy, monument signage opportunity, & well-maintained common areas
- Generous Tenant Improvement Allowance with flexible terms.
- Ample, convenient parking (4.17/1,000)
- 5 minutes from Advocate Sherman Hospital and 7 minutes from Ascension St Joseph Hospital-Elgin
- Under new ownership

[750 Fletcher Drive Video](#)

Contact

Brian Edgerton
+1 630 693 0671
bedgerton@hiffman.com

One Oakbrook Terrace
Suite 600
Oakbrook Terrace, Illinois 60181
+1 630 932 1234

hiffman.com

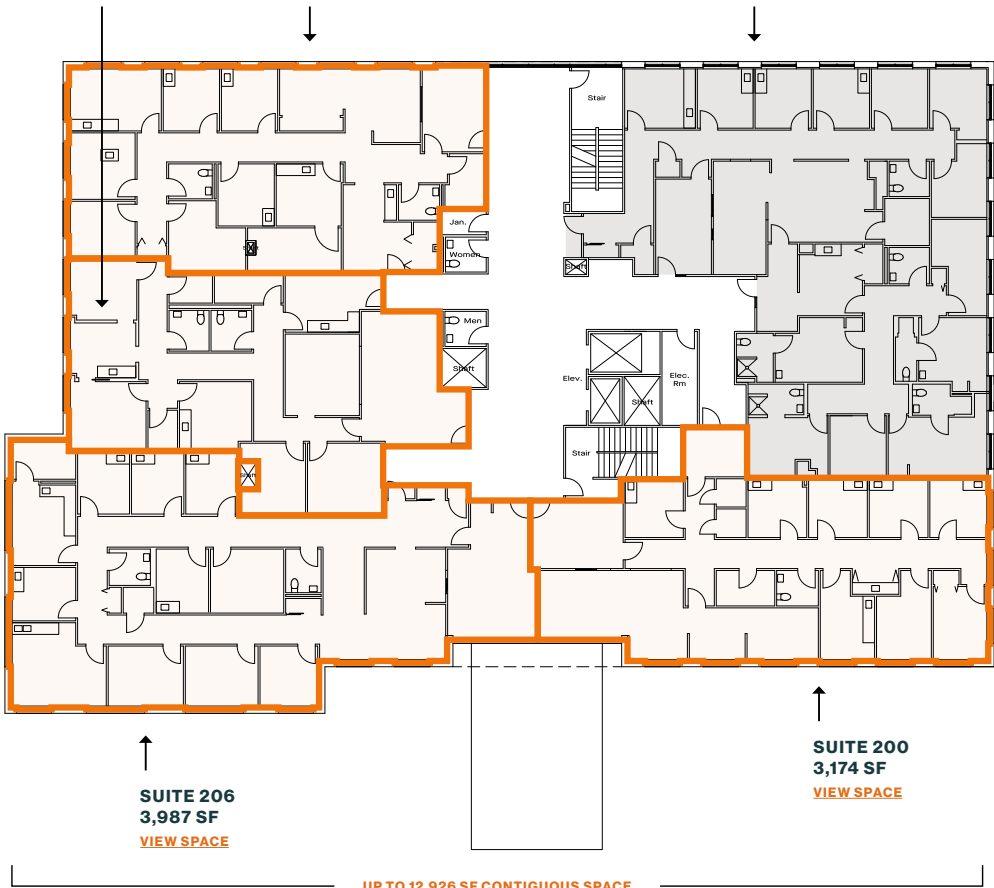
Owned and Managed by:



SUITE 202
2,769 SF
VIEW SPACE

SUITE 203
2,996 SF
VIEW SPACE

SUITE 201/204
LEASED



SUITE 206
3,987 SF
VIEW SPACE

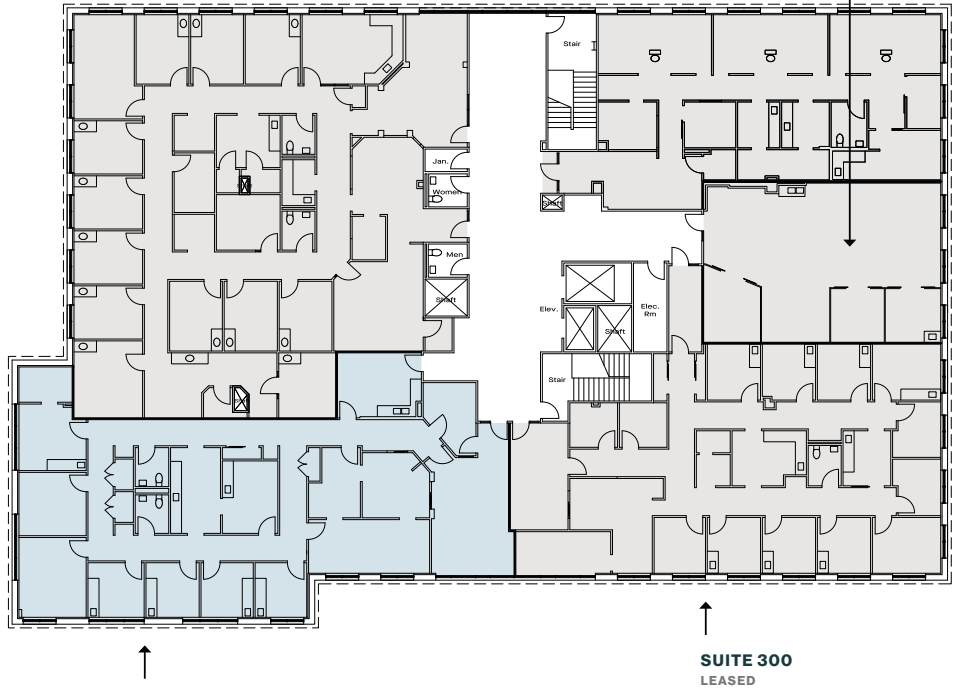
SUITE 200
3,174 SF
VIEW SPACE

UP TO 12,926 SF CONTIGUOUS SPACE

SUITE 304
LEASED

SUITE 302
LEASED

SUITE 301
LEASED



SUITE 305
OCCUPIED
4,114 SF
AVAILABLE:
8/01/2026

SUITE 300
LEASED



[Property Website](#)