



FOR LEASE

723 W. JOHNSON ST.
RALEIGH, NC 27616

**~1,368 SF
OFFICE SPACE
AVAILABLE**

LISTING BROKER:

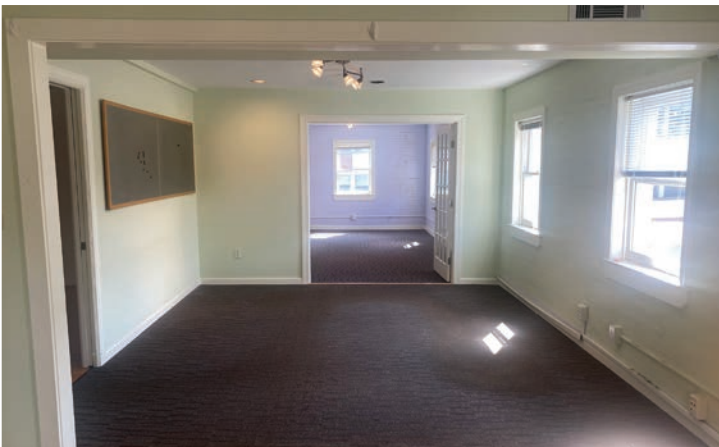
JIM HARRIS, CCIM
919.782.5552 (O) | 919.649.6114 (M)
JHARRIS@TRADEMARKPROPERTIES.COM



**TRADEMARK
PROPERTIES**

1001 WADE AVENUE SUITE 300, RALEIGH, NC 27605
TRADEMARKPROPERTIES.COM | 919-782-5552

PROPERTY HIGHLIGHTS

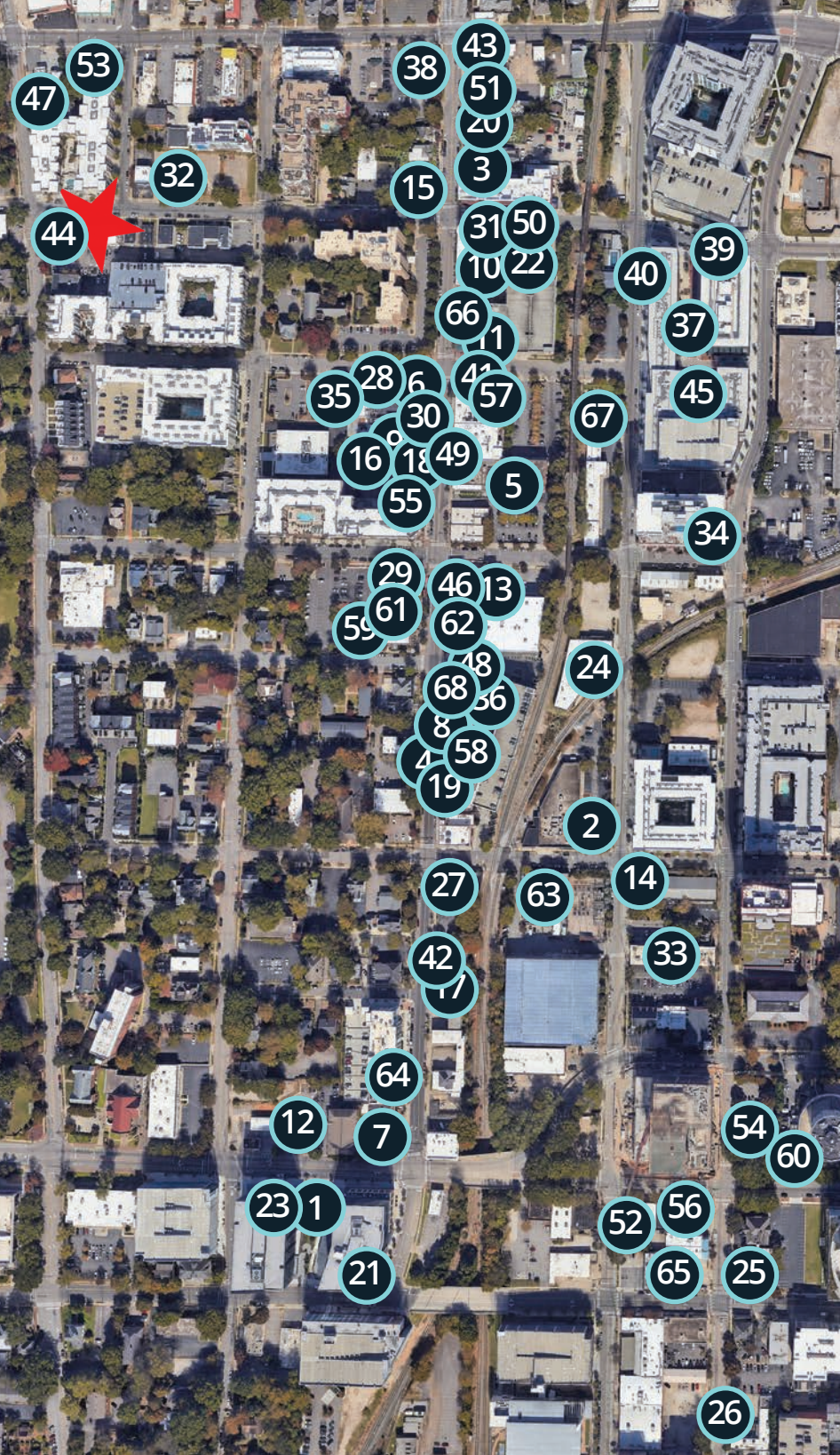


- » Suite 200 is approximately 1,368 SF and located on the second floor
- » The office space brimming with natural light and perfect for a creative business or office. It offers a rare vintage charms like exposed brick and hardwood floors.
- » Strategically located at the corner of West Johnson St. and St. Mary's St with high foot traffic, ensuring excellent exposure for your business.
- » Vibrant neighborhood with an abundance of locally-owned restaurants & shops.
- » Major developments coming to the neighborhood including a 20+ story mixed use building at the Creamery on Glenwood.
- » 8,400 VPD on St. Mary's Street just south of W. Johnson Street.

LEASE RATE:
SUITE 200: \$19.88/SF

GLENWOOD SOUTH DINING

723 W. JOHNSON ST.
RALEIGH, NC 27616



- | | |
|------------------------------------|--|
| 1. 321 Coffee | 37. Madre |
| 2. 42nd Street Oyster Bar | 38. Mellow Mushroom |
| 3. Alchemy | 39. Midwood Smokehouse |
| 4. Anise Pho | 40. MILKLAB |
| 5. The Ark Royal | 41. Milk Bar |
| 6. Armadillo Grill | 42. Mojito Lounge |
| 7. The Avenue | 43. MoJoe's Burger Joint |
| 8. Bigfoot Taphouse | 44. My Way Tavern |
| 9. Botanical Lounge | 45. New Anthem Beer Project |
| 10. Burger Village | 46. North Street Beer Station |
| 11. Carolina Ale House | 47. Peace & Saint |
| 12. Char-Grill | 48. Pearl & Peril |
| 13. Clockwork | 49. Pine State Public House |
| 14. Clouds Brewing | 50. PLUS Dueling Piano Bar |
| 15. Cornerstone Tavern | 51. Raleigh Beer Garden |
| 16. The Cortez | 52. The Roast Grill- Hot Weiners |
| 17. The Cupcake Shoppe Bakery | 53. San Marcos Wings & Grill |
| 18. Cuya | 54. Second Empire |
| 19. DeMo's Pizzeria & Deli | 55. Split |
| 20. Dogwood Bar & Eatery | 56. State of Beer Bottle + Sandwich Shop |
| 21. Dram & Draught | 57. Sullivan's Steakhouse |
| 22. Empress Room | 58. Sushi Blues Cafe |
| 23. First Watch | 59. Sushi O Bistro & Sushi Bar |
| 24. Five Star | 60. Taverna Agora |
| 25. Flying Saucer Draught Emporium | 61. Thaiphon Bistro |
| 26. Flex Nightclub | 62. Tin Roof |
| 27. Halcyon | 63. Tobacco Road Sports Cafe & Brewery |
| 28. Havana Deluxe | 64. The Willard Rooftop Lounge |
| 29. Hibernian Irish Pub | 65. Ugly Monkey Party Bar |
| 30. Highgarden Rooftop | 66. Vidrio |
| 31. Industry | 67. Whiskey Rose |
| 32. Johnson Street Yacht Club | 68. Wonderland Tapas & Cocktails |
| 33. Killjoy | |
| 34. Little City Brewing | |
| 35. Lucky B's | |
| 36. La Santa Modern Mexican | |

JIM HARRIS, CCIM
919.782.5552 (O) | 919.649.6114 (M)
JHARRIS@TRADEMARKPROPERTIES.COM

1001 WADE AVENUE SUITE 300
RALEIGH, NC 27605
TRADEMARKPROPERTIES.COM | 919-782-5552

LISTING BROKER:

JIM HARRIS, CCIM

**919.782.5552 DIRECT | 919.649.6114 MOBILE
JHARRIS@TRADEMARKPROPERTIES.COM**



**TRADEMARK
PROPERTIES**

THIS IS OUR TRADEMARK

THE INFORMATION CONTAINED HEREIN WAS OBTAINED FROM SOURCES BELIEVED RELIABLE; HOWEVER, TRADEMARK PROPERTIES MAKES NO GUARANTEES, WARRANTIES, OR REPRESENTATIONS AS TO THE COMPLETENESS OR ACCURACY THEREOF. THE PRESENTATION OF THIS PROPERTY IS SUBMITTED SUBJECT TO ERRORS, OMISSIONS, CHANGES OF PRICE OR CONDITIONS PRIOR TO SALE OR LEASE, OR WITHDRAWAL WITHOUT NOTICE.