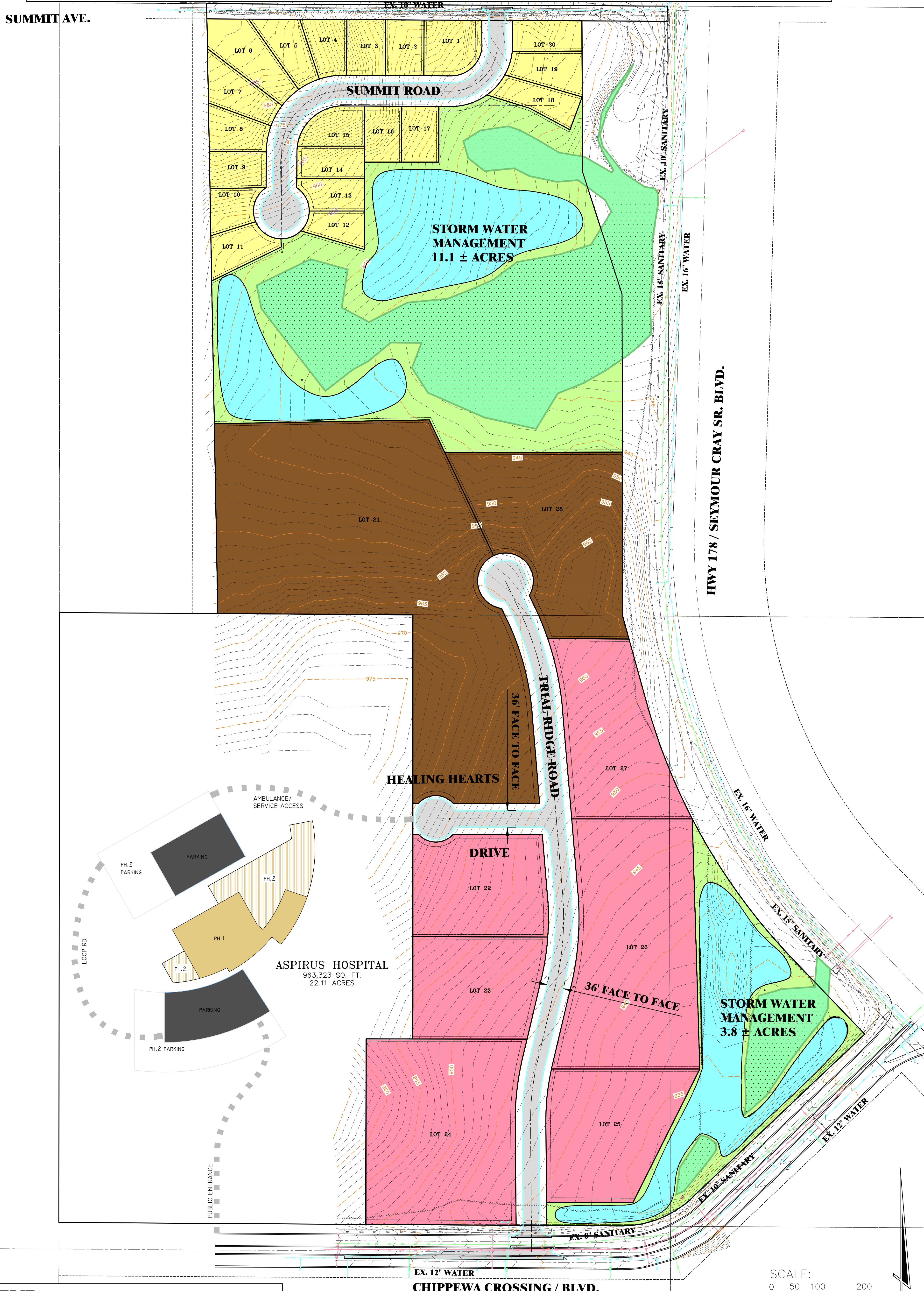


# SUMMIT RIDGE SUBDIVISION

## PRELIMINARY PLAT INFRASTRUCTURE IMPROVEMENTS

### 47 ACRE MIXED USE DEVELOPMENT

#### CITY OF CHIPPEWA FALLS CDPG DEVELOPERS, LLC



HWY 178 / SEYMOUR CRAY SR. BLVD.

### LEGEND

- SINGLE FAMILY RESIDENTIAL 4.95 ACRES
- MULTI FAMILY RESIDENTIAL 10.00 ACRES
- COMMERCIAL 12.67 ACRES
- STORM WATER POND
- PARK LAND
- WETLAND

