



1430 Pearl Street

Boulder, CO

Small Retail Space on Downtown Boulder's **Iconic Pearl Street**

Chris Boston, CCIM, MBA

cboston@gibbonswhite.com

(303) 586-5930

Kegan McNutt

kegan@gibbonswhite.com

(303) 586-5929

www.gibbonswhite.com

[Property Info & Gallery](#)

[View Map](#)

| | |
|----------------------|---------------|
| Available Space | 1,654 sq. ft. |
| Lease Rate / sq. ft. | Negotiable |

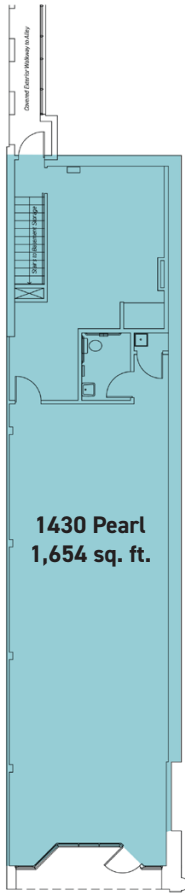
- Fantastic Storefront Exposure on Pearl Street
- Wide Open Retail Space with Private Restroom, Back Storage Area & Alley Access
- Additional 337 sq. ft. Basement Storage Available at \$15.00 / sq. ft. Gross
- Great Neighboring Tenants Including: Avanti, Postino, Illegal Pete's, Black Diamond, Liberty Puzzles, Montbell & Many More



2305 Canyon Blvd, Suite 200, Boulder, CO 80302 • (303) 442-1040

The information included has been obtained from sources believed reliable. While we do not doubt the accuracy, it is unverified and no representation is being made.

© 2024 Gibbons-White, Inc.



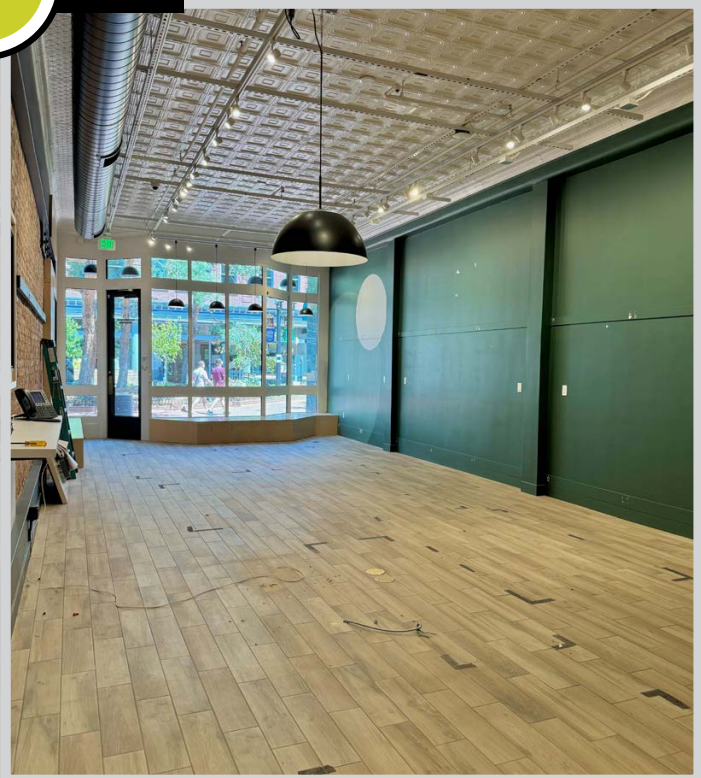
Pearl Street Pedestrian Mall



VIDEO

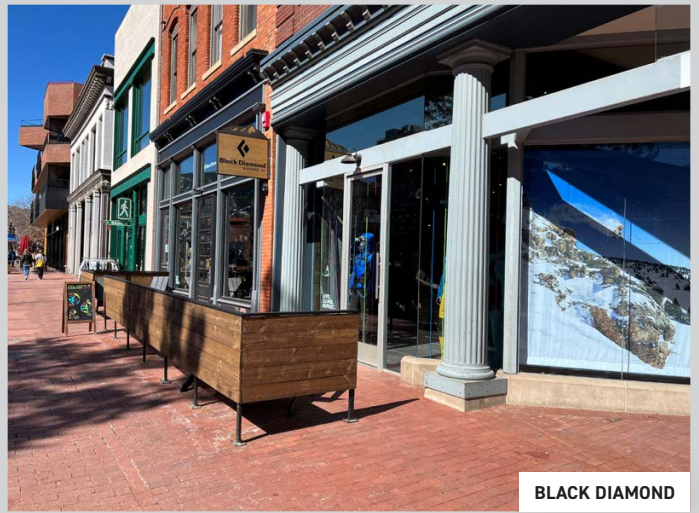


TOUR

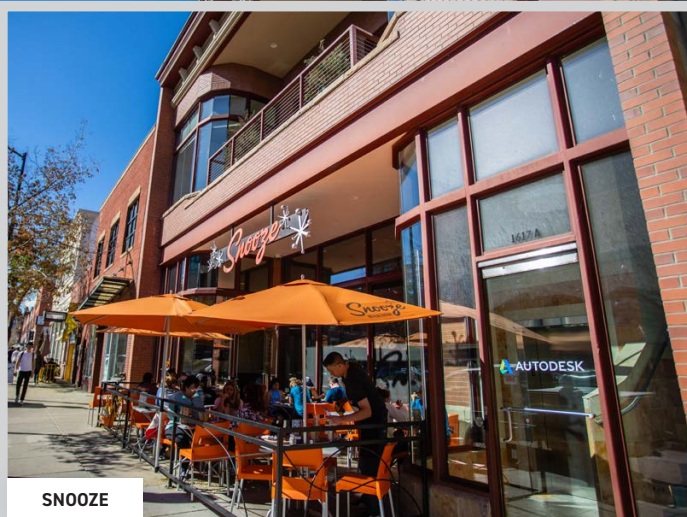




AVANTI



BLACK DIAMOND



SNOOZE



POSTINO