

2.88 AC

SW PAAR DR ±3,352 VPD

SW DARWIN BLVD ±7,508 VPD

FOR SALE

2.88 Acres for Development

NWC of SW Paar Dr & SW Darwin Blvd, Port St. Lucie, FL 34953

partners

Investment Summary

CONTACT INFORMATION



Marc Peeler

Partner

832 746 0745

marc.peeler@partnersrealestate.com



Cobo Fajardo

Associate

832 641 5279


cobo.fajardo@partnersrealestate.com



In Association with Scott Reid

ParaSell, Inc. - Broker

 **949.942.6585**

 scott@parasellinc.com

LA Lic# BROK.995705727-ACT
Costa Mesa, California

Property At A Glance

NWC of SW Paar Dr & SW Darwin Blvd
PROPERTY ADDRESS

Port Saint Lucie, FL 34953
CITY, STATE, ZIP

2.88 Acres
LAND

Property Highlights

>> LOCATION

NWC of SW Paar Dr & SW Darwin Blvd, Port St. Lucie, FL 34953

>> SITE SIZE

2.88 Acres

>> Parcel ID

4429-500-0001-000-1

>> DEVELOPMENT READY

Utilities in Place

>> STRATEGIC LOCATION

Centrally located in the densely populated Port of St. Lucie community. This site is strategically situated at the signalized intersection of Darwin Blvd. and SW Paar Dr.

>> HEAVILY TRAFFICKED

Darwin Blvd and SW Paar Dr. see a combined $\pm 10,855$ vehicles per day

>> EXCELLENT DEMOGRAPHICS

The subject property is located within a 5-mile radius of 126,824 residents, as well as 44,022 households. The average household income within 3 miles is \$94,150.

>> OWNER FINANCING

Available with 35% down, rate and term to be negotiated

>> DEVELOPMENT INVESTMENT OPPORTUNITY

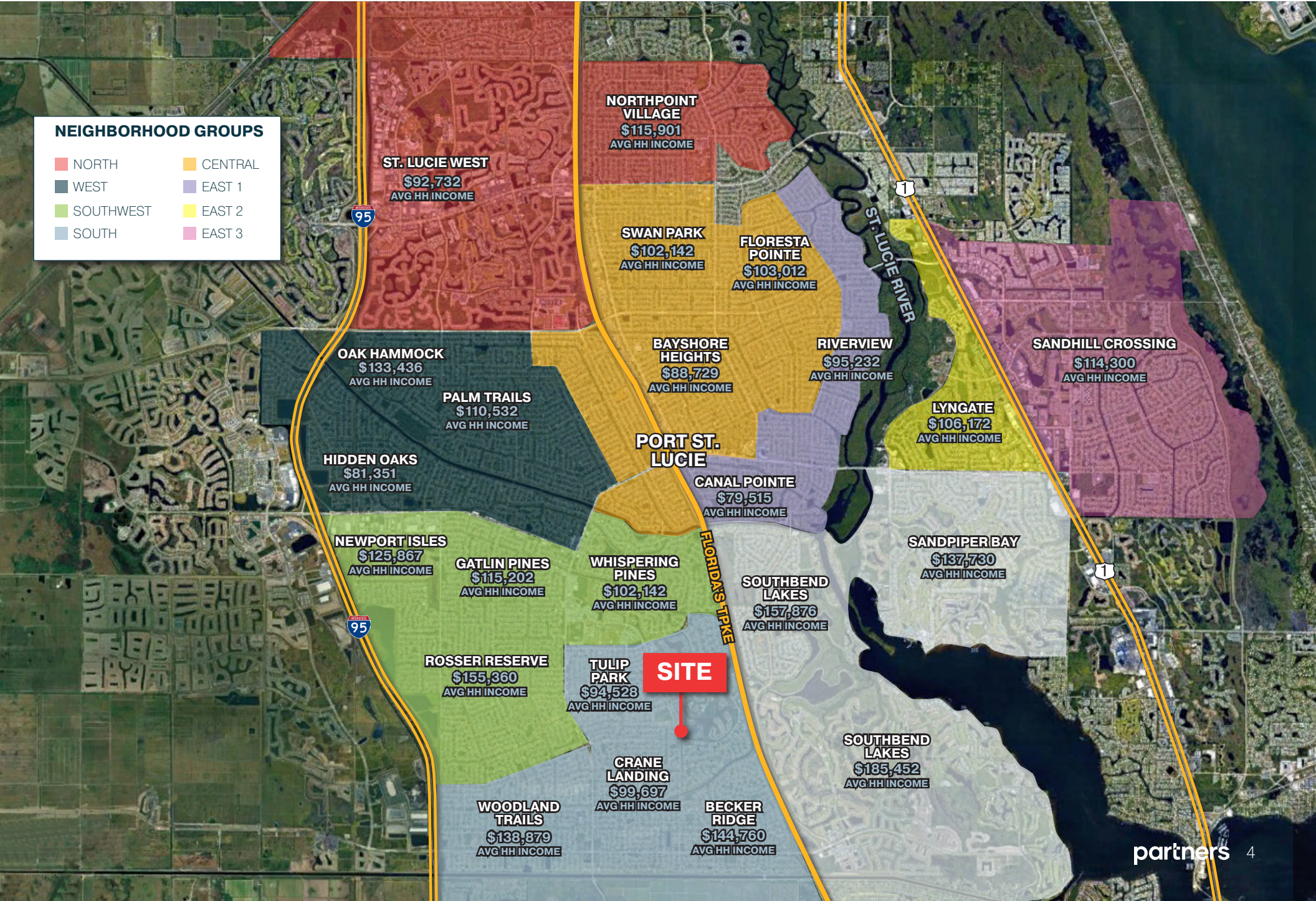
Owner would consider a JV partnership on a development project



Average Household Income

NEIGHBORHOOD GROUPS

■ NORTH	■ CENTRAL
■ WEST	■ EAST 1
■ SOUTHWEST	■ EAST 2
■ SOUTH	■ EAST 3



Sec. 158.120. – Neighborhood Convenience Commercial (CN)

(A) Purpose. The purpose of the neighborhood convenience commercial zoning district (CN) shall be to locate and establish areas within the City which are deemed to be uniquely suited for the development and maintenance of limited commercial activities offering convenience goods and personal services to residents of the immediate neighborhood area; to encourage the grouping and interrelationship of established uses so as to permit a high level of pedestrian movement within the district; to designate those uses and services deemed appropriate and proper for location and development within said zoning district; and to establish development standards and provisions as are appropriate to ensure proper development and function of uses within the district.

(B) Permitted Principal Uses and Structures. The following principal uses and structures are permitted, provided that maximum gross floor area of any one (1) use shall be five thousand (5,000) square feet. Outdoor sales and drive-through services of any type are prohibited.

(1) Any retail, business, or personal service use (including repair of personal articles only) conducted wholly within an enclosed building, including the retail sales of beer and wine for off and incidental on premises consumption in accordance with Chapter 110.

(2) Dry cleaning or laundry pick-up station for work to be sent elsewhere.

(3) Restaurant (not including drive-through facilities) with or without an alcoholic beverage license for on premises consumption of alcoholic beverages, in accordance with Chapter 110.

(4) Office for administrative, business, or professional use.

(5) Enclosed assembly area 3,000 square feet or less, with or without an alcoholic beverage license for on premises consumption of alcoholic beverages, in accordance with Chapter 110.

(6) One dwelling unit contained within the development which is incidental to and designed as an integral part of the principal structure.

(C) Special Exception Uses. The following uses may be permitted only following the review and specific approval thereof by the City Council:

(1) Enclosed assembly area over 3,000 square feet, with or without an alcoholic beverage license for on premises consumption of alcoholic beverages, in accordance with Chapter 110.

(2) Publicly-owned or operated building or use.

(3) Public utility facility, including water pumping plant, reservoir, and electrical substation.

(4) Service station (as separate use or in conjunction with a permitted use).

(5) Retail plant nursery with outside sales and storage of living plant material.

(6) Retail convenience stores with or without fuel service station and without drive-through service.

(7) Bars, lounges, and night clubs in accordance with Chapter 110.

Pricing Details

Address	Acres	Price/SF	Price
NWC of SW Paar Dr & SW Darwin Blvd, Port St. Lucie, FL	2.88	\$11.92	\$1,495,000




2.88 Acres for Development


NWC of SW Paar Dr & SW Darwin Blvd, Port St. Lucie, FL 34953

PRIMARY CONTACTS

Marc Peeler


Partner

 832 746 0745

 marc.peeler@partnersrealestate.com

Cobo Fajardo

Associate


 832 641 5279

 cobo.fajardo@partnersrealestate.com

In Association with Scott Reid

ParaSell, Inc. - Broker

 949.942.6585

 scott@parasellinc.com

Lic#BROK.995705727-ACT | Costa Mesa, California

DISCLAIMER

This offering memorandum is for general information only. No information, forward looking statements, or estimations presented herein represent any final determination on investment performance. While the information presented in this offering memorandum has been researched and is thought to be reasonable and accurate, any real estate investment is speculative in nature. Partners and/or its agents cannot and do not guarantee any rate of return or investment timeline based on the information presented herein.

By reading and reviewing the information contained in this offering memorandum, the user acknowledges and agrees that Partners and/or its agents do not assume and hereby disclaim any liability to any party for any loss or damage caused by the use of the information contained herein, or errors or omissions in the information contained in this offering memorandum, to make any investment decision, whether such errors or omissions result from negligence, accident or any other cause.

Investors are required to conduct their own investigations, analysis, due diligence, draw their own conclusions, and make their own decisions. Any areas concerning taxes or specific legal or technical questions should be referred to lawyers, accountants, consultants, brokers, or other professionals licensed, qualified or authorized to render such advice.

In no event shall Partners and/or its agents be liable to any party for any direct, indirect, special, incidental, or consequential damages of any kind whatsoever arising out of the use of this offering memorandum or any information contained herein. Partners and/or its agents specifically disclaim any guarantees, including, but not limited to, stated or implied potential profits, rates of return, or investment timelines discussed or referred to herein.